



Vault™
Top-mount/Under-mount Kitchen Sink
K-3839-4

Features

- 36-inch minimum base cabinet width.
- 18-gauge stainless steel.
- Top-mount or under-mount.
- Large/medium bowls.
- Smart Divide® lowered divider.
- Three faucet holes with one accessory hole to the right.
- Includes left bottom bowl rack.
- Includes installation hardware.
- Includes SilentShield® sound-absorption technology.
- 33" (838 mm) x 22" (559 mm).

Optional Accessories

K-6429 Utility Rack
K-6434 Saddle Utility Rack
K-6647 Sink Rack
K-6667 Wood Cutting Board
K-8801 Sink Strainer
1177161 Installation Clip Kit

Components

Product includes:

K-6646
1130570 Hardware Kit, Self-Rimming



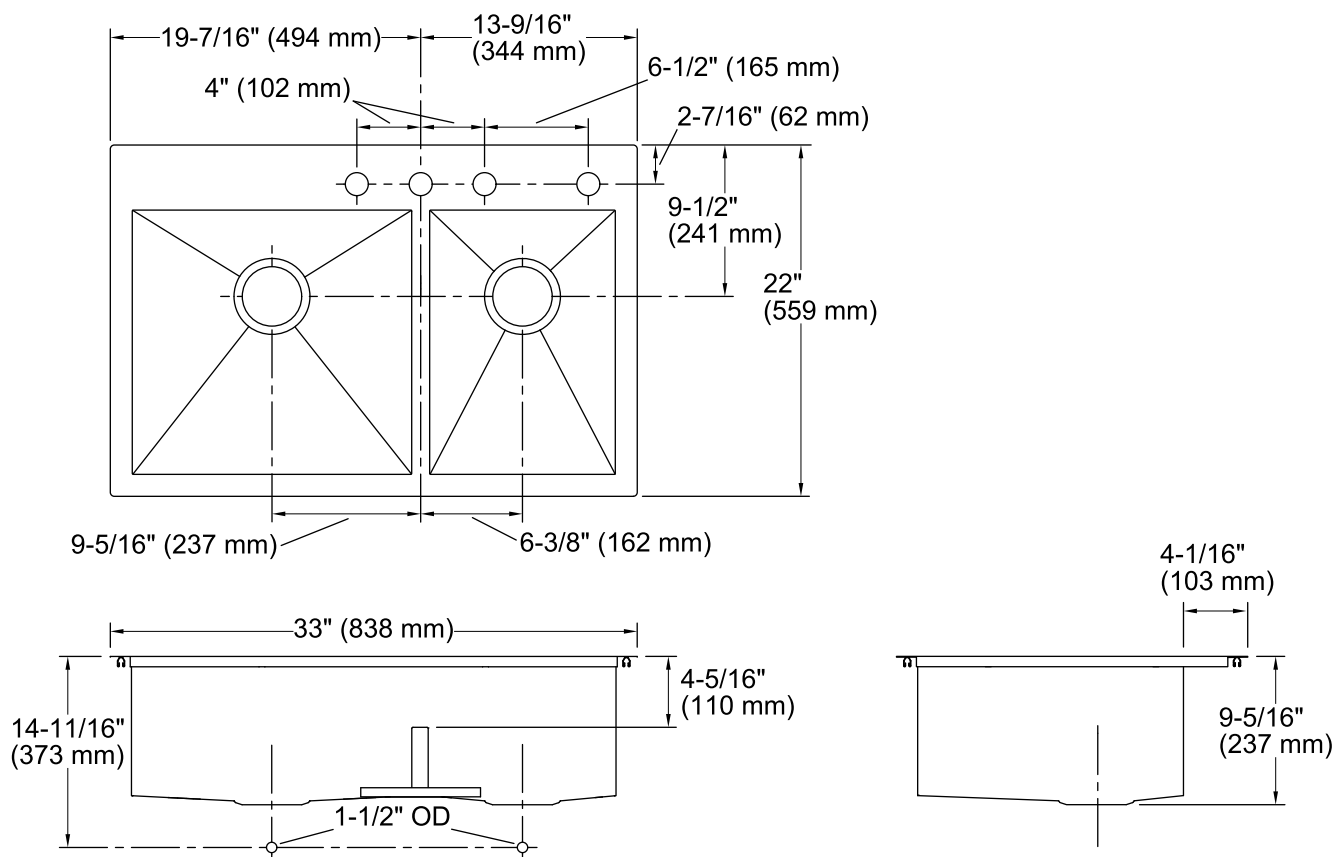
Codes/Standards

ASME A112.19.3/CSA B45.4

Lifetime Limited Warranty for

KOHLER® Stainless Steel Sinks

See website for detailed warranty information.



Technical Information

All product dimensions are nominal.

Bowl configuration: Offset

Installation: Top-mount, Under-mount

Bowl area (Left) Length: 17-1/2" (445 mm)
Width: 16-9/16" (421 mm)
Bowl depth: 9" (229 mm)
Water depth: 4-11/16" (119 mm)

Bowl area (Right) Length: 11-5/8" (295 mm)
Width: 16-9/16" (421 mm)
Bowl depth: 9" (229 mm)
Water depth: 4-11/16" (119 mm)

Number of deck holes: 4

Faucet hole(s): 1-7/16" (37 mm)

Drain hole: 3-5/8" (92 mm)

Template: Top-mount/Under-mount, 1130823-7,
required, included

Notes

Install this product according to the installation guide.

Allow 3/4" (19 mm) clearance beyond the back of the bowl for the wood cutting board (optional accessory).