

User Manual

Dear Customer

Thank you for choosing our fountain product. Please read this manual carefully before use to ensure the correct installation and use of your fountain.

Product Lists



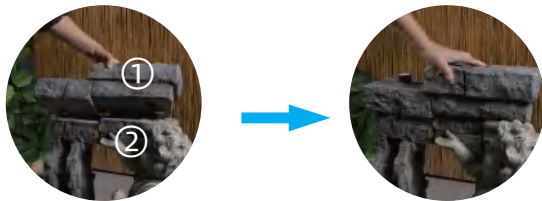
1. Preparation Before Installation

Choose a flat location free from falling leaves for placing the fountain, ensuring that the power cord can easily reach an outlet.

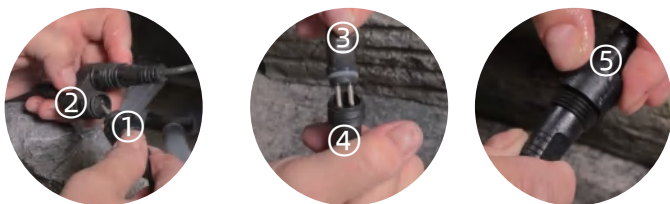
2. Installation Steps

Step 1: Installing the Base and Basin

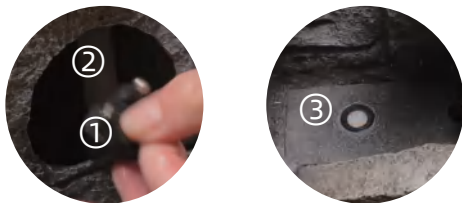
a. Securely attach the stone component (①) to the fountain connector (②).



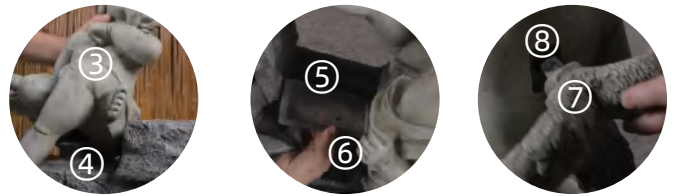
c. Connect the light wire ① of the decorative light panel to the light wire hub ②, then connect the light wire hub wire ③ to the water pump ④. Ensure that both connection points are securely fastened with waterproof rings ⑤.



e. Thread charging head (①) through fountain's rear door (②) from tank (③) bottom, embed decorative light panel into it.



b. Mount angel sculpture (③) onto stone interface (④). Install mesh (⑤) into fountain basin rear rectangular recess (⑥). Attach wings (⑦) to angel groove (⑧).



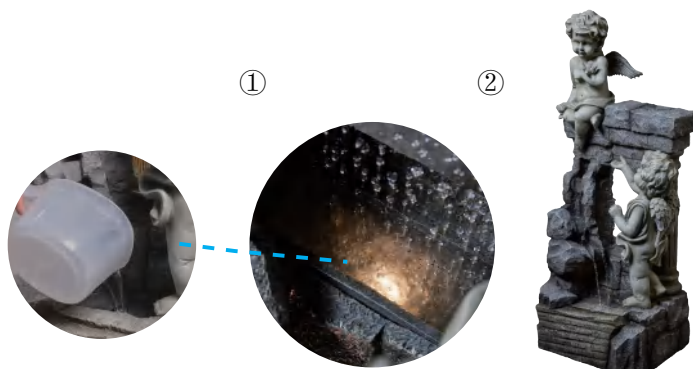
d. Connect water pump (①) securely to hose (②), then place water pump (③) at the bottom of water tank (④).



3. Filling with Water and Powering On

1. Fill the storage tank with water, ensuring the water pump is completely submerged.

2. Plug in the power, wait a moment, and enjoy the flow of the fountain.



Troubleshooting

If pump does not run, the following should be checked

1. Checking the circuit breaker, then try another outlet.
2. Check the water level in the fountain. Running the pump without sufficient water can damage the pump.
3. Check the setting of the flow control on the pump.
4. Check the pump discharge and intake for dirt and debris.
5. Check the fountain feature tubing for kinks and obstructions.
6. Is the pump air-locked? Plug and unplug the pump several times to clear it.

NOTE:

1. This fountain is fragile; please handle it with care during installation and use.
2. Adjust the pump volume and flow to achieve the desired effect. Splashing may occur if the flow rate is too high. The rate can be increased or decreased by moving the flow rate control slider on the pump body. Moving the slider towards '+/Max' will increase the water volume, and moving it towards '-/Min' will decrease it. On some types of pumps, the flow regulator may be turned clockwise or counterclockwise, or slid side-to-side to adjust the flow.
3. Monitor the water level in the fountain weekly and refill it as needed to maintain proper operation.
4. Clean with damp cloth. Do not use any chemicals to clean as they may ruin the finish.

Safety Warnings and General Information

- Do not use the appliance with a damaged power cord or plug.
- To avoid hazards, ensure that any electric cable is safely out of the way of children and pets.
- Where possible, ensure all power cables are positioned away from high-traffic areas.
- It is important that an RCD (Residual Current Device) is present and any product of this type is connected to it.
- Before removing, repositioning, or replacing the water pump, turn off the power and unplug the unit.
- Always use the original power cable supplied with the product.
- Make sure the voltage on the rating label matches the mains power supply to be used.
- The water temperature must not exceed 35°C. Top up the water levels frequently during hot weather.
- In very low temperatures, drain, dry and protect the water feature from frost, snow and ice.
- This product is designed for outdoor use only and should not be positioned where water spillage may damage carpets or furnishings.
- Always place the fountain on a flat, level surface.
- Choose a location free from overhanging trees or bushes that may shed leaves in autumn.
- Ensure the water level remains sufficient and avoid allowing the pump to run dry.
- To eliminate the possibility of water damage around your water feature, check for leaks and excessive splashing after the initial setup.
- Do not leave your water feature running for extended periods of time unattended.
- Occasionally the water pump may make excessive noise, this may be due to the pump rattling against the side of the reservoir or a small amount of trapped air. Always ensure that the pump is suckered to the base using the rubber feet.

DISCLAIMER

Carefully inspect all items for damages before accepting delivery. Note any damages on the freight bill or express receipt. request name and signature of the carrier's agent and keep a copy to support your claim. Upon acceptance of items, owner assumes responsibility for its safe arrival. Report damages to the carrier and file a claim immediately. Failure to do so may result in the denial of your claim. The carrier will furnish you with necessary forms for filing a claim.

Damages on any returns or exchanges caused during transit are not covered under our warranty the customer must insure the return with the shipping company. If your fountain is damaged in transit, please contact us within 14 days of receiving your new order to report the damages. We will try our best to file a damage claim and investigate the matter.

Please inspect contents of packages carefully upon receiving! We must be notified of any damages and/or missing parts within fourteen 14 days upon your receipt of the packages. Claims will not be accepted after 14 days.

NOTE:

Items are thoroughly tested and carefully packed in our facility before shipping. Products must be returned in good working condition with all original parts, documentation, and packaging (including original cartons, fillers, and shipping cartons). We will not accept exchanges or returns if the product has been used, shows signs of use or damage, or is missing parts.