

DIAMANT M1

LAPIS • H0 0001 4248

Jacquards / Wovens from the Contract 24 Collection by Lelièvre



APPROX. MATERIAL 54" / 137.16 cm
WIDTH

APPROX. REPEAT . . HORIZONTAL 0.25" / 0.64 cm
VERTICAL 0.75" / 1.91 cm

MATCH STRAIGHT

CONTENT 100% POLYESTER, TREVIRA CS

SUGGESTED USE . . . HEAVY DUTY MULTIPURPOSE

PERFORMANCE / . . FLAME RETARDANT (FR)
CONTRACT HEAVY DUTY ABRASION
IMO CERTIFIED

ABRASION 40,000 MARTINDALE

FIRECODE M1, B1, CLASS 1, EN 2021 PART 1&2

CLEANABILITY DRY CLEAN ONLY

MADE IN FRANCE

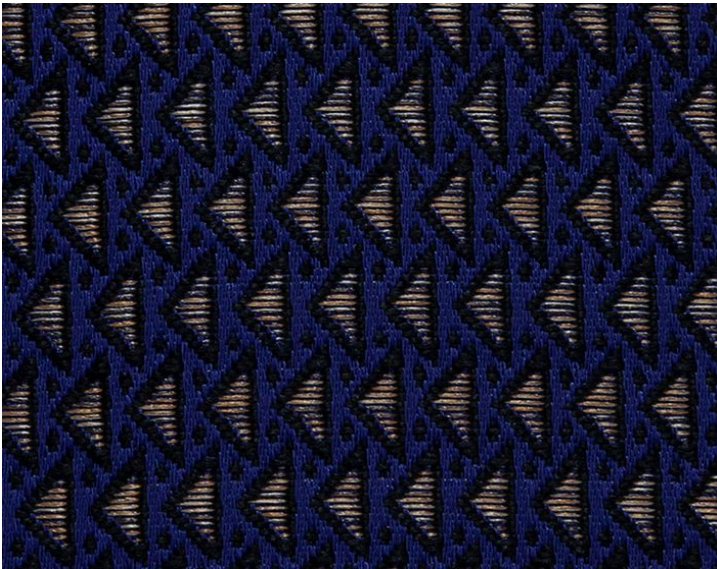
STOCKED IN SUPPLIERS WAREHOUSE EUROPE

DESIGN SMALL SCALE

SCALE SMALL

DESIGN INSPIRATION

A small triangle, tie design full of character, yet easy to use. Diamant has a contrast of matte and sheen, due to its thoughtful construction; a micro diamond motif with reflective centers, delicately strewn over a matte thread on top a satin warp ground. This considered construction enhances the vividness of the colors. Multiple use is encouraged, but Diamant is ideal for small upholstered pieces in a sophisticated, refined interior.



DETAIL IMAGE