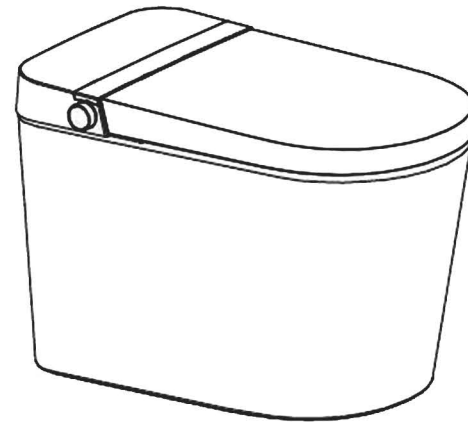


Smart Toilet User Manual



Thank you for purchasing our product

Please read the manual carefully and use the product properly

To our users:

Thank you for purchasing our smart toilet series products. In order to ensure safety, please read this manual carefully before using this product and store it carefully for reference.

The diagram in the manual is for reference only, please refer to the actual object. The company is constantly committed to improving the quality of products, products continue to introduce new, product changes without notice, please understand.

Product introduction

This series of products has, map heating, soft lighting, kick flushing, leakage protection, automatic flushing, remote control flushing and other functions.

Usage method

Please confirm in order before use:

1. first use, debug the machine. 2.the Angle valve is in the open state, and the waterway is smooth. 3.plug the plug into a well-grounded three-pin socket, make sure the plug is firmly inserted, the plug indicator light indicates that the toilet has been powered on,if the indicator light is not on, press the "reset" button on the plug to power on.

1. In the standby state.

In the off seat state, press and hold the water flushing power button on the knob for more than 3 seconds to enter standby mode; In standby mode, long press the flushing power button on the knob to exit standby mode.

2. seat ring heating.

In the power on state, short press the seat temperature button on the remote control to adjust the seat temperature, with a range of 1-4 levels.

3. Night Lamp

In the power on state, short press the night light button on the remote control to turn on and off the night light.

4. Kick and flush

In the off-seat state, the kick mode is triggered, and one flush is performed. In the seated state, the kick flush is not effective.

Safety Precautions

To avoid injury and property damage to yourself and others, please observe the following safety precautions:

⚠ WARNING | May cause electric shock, fire, injury, property damage.

🚫 Prohibit | Do not manipulate prohibited content

🔔 Force | The enforced content must be observed

🔌 Grounding | The ground cables are correctly connected, including the live wire, neutral wire, and ground wire

⚠ Look out | Minor injury or damage may be caused, so be sure to pay attention at all times

⚠ WARNING	
🚫 Disassembly prohibited	It is absolutely prohibited to disassemble, repair or transform this product by yourself, which may cause fire, electric shock and other accidents.
🚫 No watering	Do not pour water or detergent on the power plug, which may cause fire, electric shock and other accidents.
🚫 No fire	Do not put lit cigarettes or burning species etc. near the product, it may cause a fire.
🚫 Prohibit	Do not continue to use the product when it fails, please contact after-sales service personnel to repair. When the following situations occur, please unplug the power plug and close the inlet Angle valve. 1. Water leakage from the inside of the product; 2. The product temperature is abnormally high; 3. abnormal sound, odor; 4. the product smoke. If the product is still used in the case of failure, it may cause problems such as fire, electric shock, and water in the room. (The normal service life of this product is six years, if continued use beyond the service life may cause safety accidents)
	Do not use water other than tap water, it may cause infectious dermatitis and other diseases.
	Do not use loose power sockets, which may cause fire or electric shock.

⚠ WARNING	
⊘ Prohibit	Please use power sockets and cable appliances within the specified conditions (110V~, 60Hz socket); Do not use a power supply other than 110V~; When the power exceeds the socket regulations, it may cause the socket to heat up and cause a fire.
	Do not damage power cables and seat ring connections. 1. Do not damage, do not process, do not heat; 2. Do not forcibly bend, do not curl, do not pull; 3. Do not place heavy objects on the power cord and seat ring connection. Continue to use in spite of product damage, which may cause fire, electric shock, short circuit and other conditions.
ⓘ Force	1. This product is an electrical product, do not place it in a place where water is spilled or humidity is high. When used in the bathroom, please install a ventilation fan or ventilation port to keep good air circulation in the bathroom, otherwise it may cause fire or electric shock; 2. If the power cord is damaged, do not disassemble it by yourself, and it must be replaced by the manufacturer or its maintenance department or similar full-time personnel.
Ⓣ Earthing	Check whether earthing is performed. An ungrounded product may be electrocuted if it fails or leaks electricity.

⚠ Look out	
⊘ Prohibit	When sitting on the seat for a long time, the temperature of the seat should be adjusted to a low setting, and please pay attention to low temperature burns. The following personnel should adjust the seat ring temperature at a low setting when using the toilet. 1. Children, the elderly and other people who cannot adjust the temperature to a suitable degree by themselves; 2. The sick, the disabled and other persons who cannot move freely; 3. due to the use of hypnotic drugs (such as sleeping pills, cold medicine, etc.) deep drinking, excessive fatigue sleepiness.
	Do not forcibly stretch the water supply pipe connecting the pipe. Otherwise, water leakage may occur.
	Do not lean against the cover or force the control panel, otherwise it may cause failure or damage; Forcibly applied force may damage the cover and control panel, resulting in personal injury.
	Do not place vases, cups, cosmetics, medicines and other liquid containers or small metal objects above this product. If accidentally entered into the product, may result in fire or electric shock.
	Do not place the product in direct sunlight; otherwise, the appearance of the product may be aging and deformed.
	Persons with disabilities, physical, perceptual, intellectual disabilities, and lack of experience and common sense (including children) need to use this product under supervision. Do not allow children to play with this product. People with pacemakers are not suitable for this product.
	Do not use the toilet to wash anything other than large, urinal and toilet paper, otherwise it may cause the toilet to be blocked and sewage to overflow.
	Please not hit the ceramic with gravity to prevent damage and leakage.
	Do not use in an environment below 0 ° C.
	ⓘ Force
Prevent damage caused by freezing. Freezing will cause internal damage to the inlet hose and the product, resulting in water leakage.	

ⓘ Force	When you do not use or clean for a long time, such as traveling, unplug the power plug from the socket and close the water inlet valve.
	Please unplug the power supply when lightning strikes.
	This product is for bathroom use only. Do not use it for any purpose other than the one described in the instruction manual, otherwise it may cause fire, electric shock, personal injury or failure.
	Do not contaminate the smart toilet with contaminants such as urine. Otherwise, the smart toilet may smell or malfunction.
	Do not forcibly close the seat and cover, and avoid external objects stuck on the track of the cover and cover during the process of turning the cover and cover over, otherwise it may lead to failure; Be careful not to pinch your fingers when opening and closing the seat ring and cover, otherwise it may cause injury.
When performing external maintenance, please remove the power plug from the socket for safety, otherwise it may cause electric shock.	

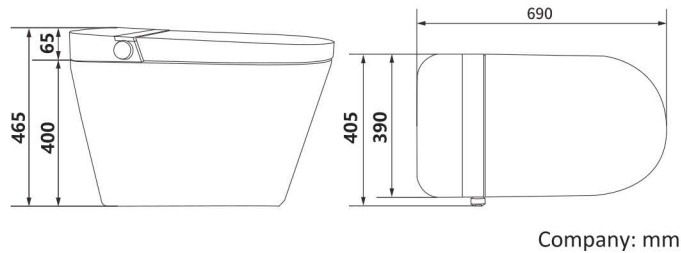
Packing list

N0.	Name	Quantity	N0.	Name	Quantity
1	seat cover and WC	1	2	Filter angle valve	1
3	User Installation Manual	1	4	Francois	1
5	Remote controll	1	6	4 to 6 connector	1

Technical parameter

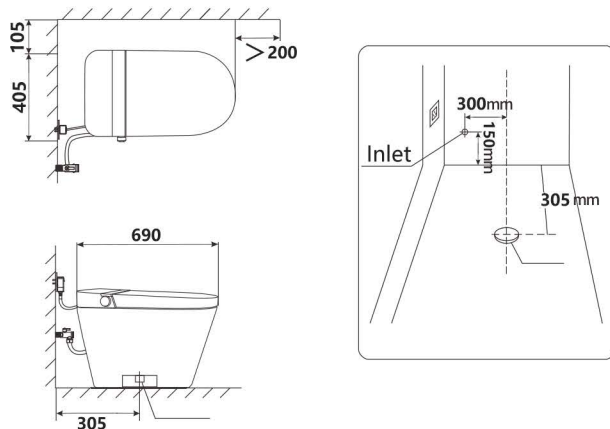
Rated voltage	110V	Rated frequency	60Hz	
Rated power	46W	Power line length	1.5m	
Water supply mode	Water channel directly connected type	Environment °C	3°C - 40 °C	
Water supply °C	3°C - 35 °C	Water pressure	0.14MPa - 0.8MPa	
Safety device	Leakage protection device, pedestal induction device, water overvoltage protection device			
Thermal holder	Surface °C	4 gear (normal temperature - about 39° C)	Seat ring heater	45W
	Security Settings	Physical thermostat, temperature fuse wire	Switch	Damping drop

Installation dimensions



Preparation before installation

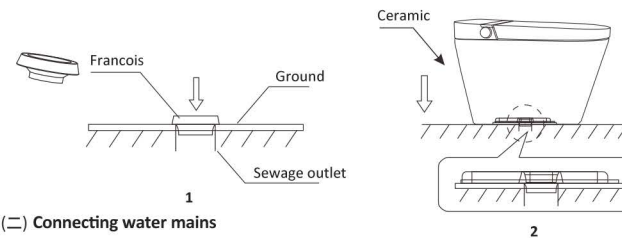
Please make sure to reserve the installation position according to the following figure (* represents the recommended size), so as not to affect the normal use of the water inlet pipe and power cord.



Installation Instructions

1. Install flanges and ceramics

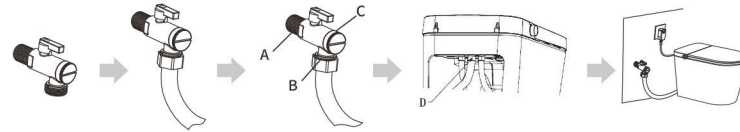
1. Place the flange on the sewage outlet and seal it well; (See Figure 1 for steps)
2. Place the ceramic sewage outlet on the flange; (See Figure 2 for the steps)
3. adjust the position of the ceramic and install it smoothly, and seal it with glass glue between the ceramic body and the ground.



(二) Connecting water mains

- ⚠ Before installation, be sure to open the water inlet switch to drain water, so as to clear the impurities and sludge in the embedded water pipe, so as to avoid blockage Plug, affecting product function.

1. when the water supply valve is closed, remove the old Angle valve, replace the machine configuration of the Angle valve, use the new hose assembly shipped with the product, the old hose assembly can not be reused;
2. Connect the hose assembly inside the ceramic to the Angle valve;
3. after the machine is installed, open the knob to detect A, B, C, D no leakage phenomenon;
4. check correct, plug in the power, press the "manual flush" button; Confirm the effect of sewage siphon.



Draw the water inlet braided pipe out of the toilet and tighten it with the filter angle valve.

Product cleaning and maintenance methods

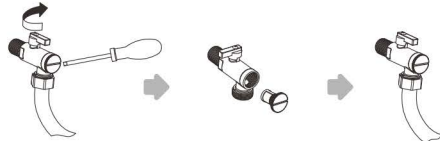
Warning: Precautions when cleaning the smart toilet

1. do not clean the product by hand in the state of damage or failure, to avoid secondary failures;
2. do not use hydrochloric acid cleaning agent, diluent, bleach, benzene or strong detergent to clean the surface of the smart toilet, do not make pesticides, air fresheners and deodorants on the smart toilet. In case of discoloration, cracking and damage caused by the use of the above reagents, paid services should be accepted even within the shelf life.

Cleaning of the filter

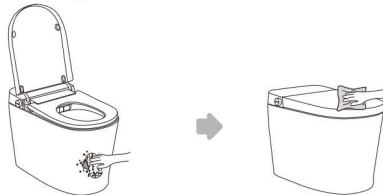
When the water supply valve is closed, cut off the machine water source as follows:

1. Turn clockwise to close the water inlet valve;
2. Loosen the filter with a coin or a flat-head screwdriver,
3. Take out the filter, clean it with a toothbrush or other tools, and then put it into the body;
4. Turn counterclockwise to open the water inlet valve.



Smart toilet appearance cleaning method diagram

1. using a soft cloth or sponge with neutral detergent to clean the whole machine;
2. Wipe the whole thing clean with cotton cloth after cleaning.

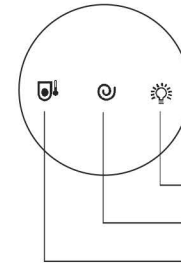


Winter Management Method for Smart Toilets to Prevent Freezing

Follow the following methods to manage your smart toilet during winter to prevent freezing:

1. Check if the power plug is properly inserted into the outlet.
2. If there is no heating device in the bathroom, wrap the connecting pipe with a cloth or use other insulation materials to keep it warm. Note that the filter net should be tightened firmly, otherwise it may cause leaking. Do not squeeze the filter net too hard, otherwise it may deform or break. If there is dirt blocking the filter net, it may cause insufficient flushing water pressure. Clean it every three months.
3. We recommend that you do not use detergent when cleaning, but simply use tap water.

Side button



1. Turn to the right to turn the night light on and off
2. Short press flush, long press off
3. Rotate to the left, adjust the seat temperature, adjust the range (1-4).

Environmental statement

The name and content of harmful substances in the product						
unit	Harmful substance					
	(Pd)	(Hg)	(Cd)	(Cr(VI))	(PBB)	(PBDE)
seat cover and WC remote control	×	○	○	○	○	○
Attachment	×	○	○	○	○	○

1. The numerical value on this label indicates that the product has an expected environmental protection service life of 10 years under normal usage conditions. Some components may also feature their own environmental protection service life labels, with their respective durations determined by the numerical values indicated on those labels. Depending on the model, not all of the aforementioned components, except for the main unit, may be included in the product. The actual sales configuration of the product shall take precedence.

Refrain from disposing of this product and its components as regular household waste; Kindly adhere to local regulations regarding the disposal of this product and its components, while actively supporting recycling initiatives.

Common problem response

Phenomenon		Verify	Handle
The function doesn't work at all		Whether cloth covers, MATS and other items are used in the sensor area of the seat ring	Please remove cloth covers, MATS and other items
		Power failure or not	Wait until the power supply is restored
		Socket is loose or in poor contact	Please plug it in to ensure good power supply
		Whether the power reset button is pressed	Please press the power button on the toilet
Race	The seat ring is not hot	Whether the strength of the insulation ring is set to low or off	Please press the seat temperature button on the remote control to reset the seat ring temperature
		Power failure or not	Wait until the power supply is restored

Warranty card

Thank you for choosing our intelligent toilets. When you come up with a certain malfunction, please refer to operation manual to check and repair. When you are still not able to solve fault by yourself, please contact distributors or our appointed maintenance centers.

During the warranty period, in case of any malfunction caused by correct usage, you may contact our after-sales service hotline for on-site maintenance. However, if any of the following situations (1)~(5) occur during the warranty period, appropriate charges for repair costs (including materials and labor) will be applied.

- (1) In case the warranty card of this product cannot be presented;
 - (2) Failures caused by use methods not specified in the user manual;
 - (3) Failures and damages caused by disassembly, repair, and modification carried out by the user;
 - (4) Failures and damages caused by external reasons such as force majeure;
 - (5) Failures and damages caused by transportation, handling, and compression.
- The scope of responsibility of this warranty card is limited to product repair only, and no other liability is assumed. A fee may be charged for repairing products beyond the warranty period. This warranty card is not replaced if lost, so please keep it properly.