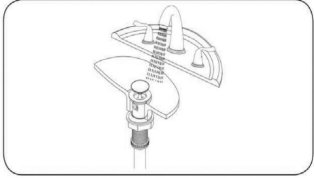


Step 9: Check and Run Water



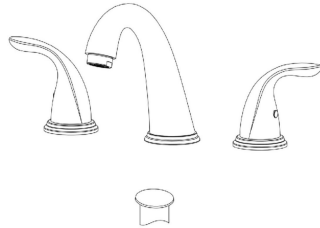
- Check to make sure that both handles and the spout are tight.
- Slowly open one water inlet valve and check for leaks; if no leaks, open the valve all the way.
- Slowly open the other water inlet valve and check for leaks; if no leaks, open the valve all the way.

▲ NOTICE If a leak is spotted, close the valve and remove the water line, along with the plumber's tape on the threads. Then re-tape the threads and connect the water line. Repeat the procedure.

- While the water is running, check for leaks on the bottom of the sink.

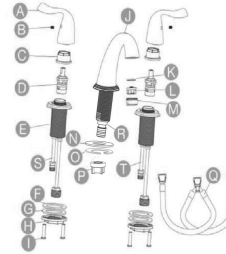
MADE IN CHINA

INSTRUCTION



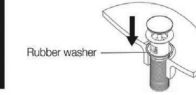
Dalmo DBWF01DR

Part List



No.	Description	Qty	No.	Description	Qty
A	Handle	x2	K	O-ring (Ø23 x 14 x 2,2)	x1
B	Screw (M5 x 4)	x2	L	Aerator (M22)	x1
C	Locking nut	x2	M	Aerator housing	x1
D	Cartridge (1/2")	x2	N	C-shaped rubber washer	x1
E	Handle base	x2	O	C-shaped metal washer	x1
F	Rubber washer (Ø50 x Ø33 x 2)	x2	P	Nut	x1
G	Metal washer (Ø50 x Ø33 x 2)	x2	Q	Hose connector	x1
H	Mounting nut	x2	R	Water inlet hose	x1
I	Screw (M8x25)	x4	S	Hot water hose	x1
J	Spout	x1	T	Cold water hose	x1

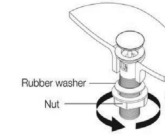
Step 7: Installing the Pop-up Drain



Rubber washer

- Slide the pop-up drain tube with rubber washer through the hole in the sink.

Step 8: Installing the Pop-up Drain



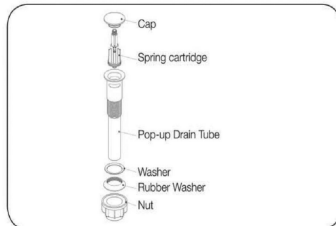
Rubber washer
Nut

- Slide rubber washer into the hole in the bottom of the sink.
- Tighten nut and rubber washer until tight.

▲ NOTICE When sliding the rubber washer onto the drain tube make sure that the taper is facing upwards.

- Connect the hot water line to the left water inlet of the faucet.
- Connect the cold water line to the right water inlet of the faucet.
- Use wrench to tighten. Do Not Overtighten.

Step 6: Preparing the Pop-up Drain



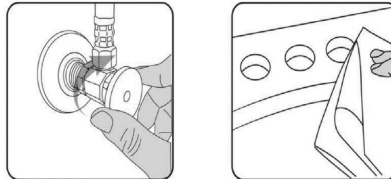
- Remove the drain tube nut and rubber washer.

Before First Use

- Check for transport damage.

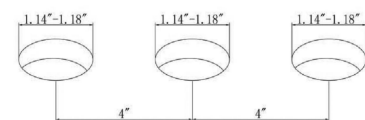
▲ DANGER Risk of suffocation! Keep any packaging materials away from children – these materials are a potential source of danger, e.g. suffocation.

Installation Step 1: Shut Off Water Supply



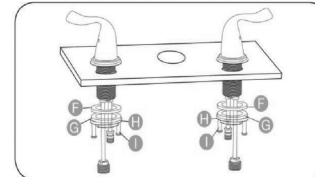
- Locate water supply inlets and shut off the water supply valves. These are usually found under the sink or near the water meter. If you are replacing an existing faucet, remove the old faucet from the sink and remove any dirt and/or plumber's putty from around the faucet holes.

Pre-drilled size requirement: 1.14" (min) - 1.18" (max)



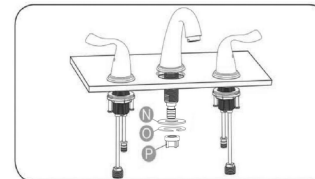
Installation

Step 2: Install Handles



- Remove the mounting nut, rubber washer and the metal washer from the hot water handle.
- Insert the hot water handle into the left hole and the cold water handle into the right hole in the sink.
- Slide the metal washer and the rubber washer over the threaded body of the handle.
- Screw the mounting nut onto the threaded body and tighten using a wrench.
- Center the handle over the sink hole and tighten the screws on the mounting nut. Repeat the procedures above to install the cold water handle.

Step 3: Install Spout

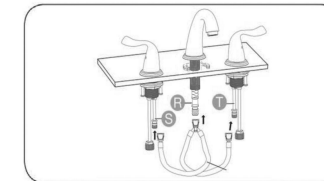


- Remove the nut, metal washer and the rubber washer from the spout.
- Insert the spout into center hole of the sink.

▲ NOTICE Make sure the o-ring is at the bottom of the faucet.

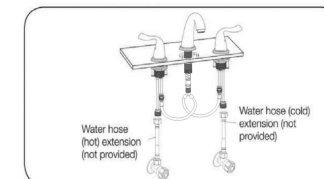
- Slide the rubber washer and metal washer over the threaded rod.
- Screw the nut onto the threaded rod and hand-tighten.
- Center the spout over the center sink hole and tighten the mounting nut using a wrench.

Step 4: Attach the "Y" Water line



- Push the quick connect coupler marked "Hot" onto the hot handle water inlet (S).
- Push the quick connect coupler marked "Cold" onto the cold handle water inlet (T).
- Push the middle quick connect coupler onto the spout water line (R).

Step 5: Connect Water Lines



Water hose (hot extension (not provided))
Water hose (cold) extension (not provided)