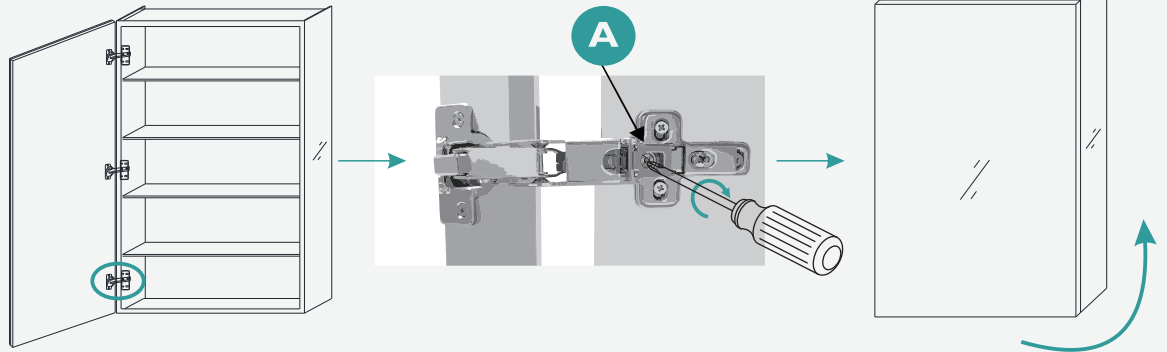
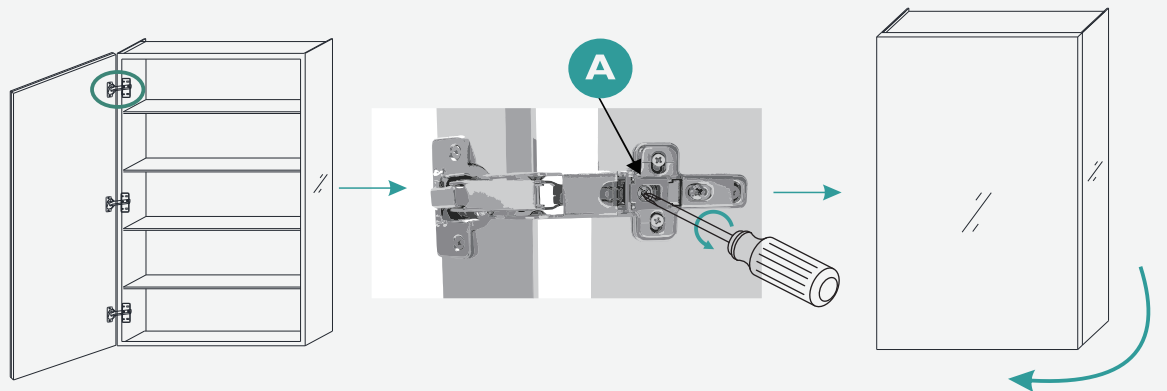


# Optional Door Adjustment

Find the bottom hinge and the screw **A** on hinge, turn the screw clockwise, then the door will be turned up.



Find the top hinge and the screw **A** on hinge, turn the screw counter-clockwise, then the door will be turned down.



Find all hinges and the screw **B** on hinge, this screw allow you to adjust the distance between door and cabinet.

