

WATERFALL KITCHEN SINK

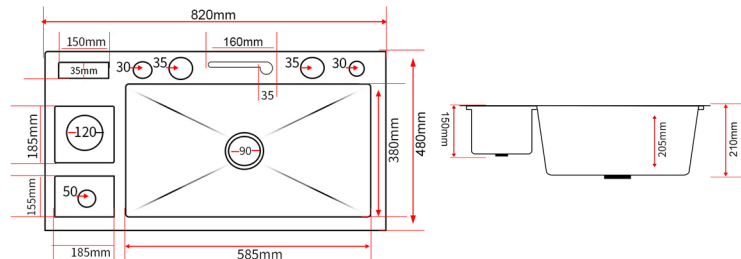


INSTALLATION PREPARATION

Product Sizes and Cutout Suggestions

●PRODUCT PARAMETERS

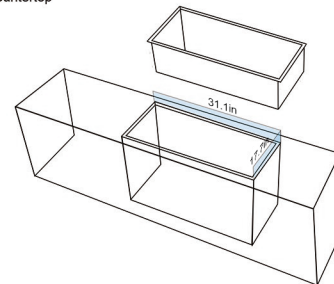
Style	Image	Size	External length & width	Inner length & width	External height	Inner height
Digital Display Sink		82x48cm	82x48cm (32.2inx18.8in)	58.5x38cm (23inx14.9in)	21cm (8.26in)	20.5cm (8.07in)



●SUGGESTION FOR DIMENSIONS OF CUTOUT

The size of cutout listed below (Drop-in, 82cmx48cm) Is just for your reference, please check all the dimensions on site to make sure the sink perfectly fits for your countertop

PRODUCT PARAMETERS		
External Size (Length x Width)	Drop In Cutout Dimensions	Undercounter In Cutout Dimensions
82x48cm (32.2inx18.8in)	79x45cm (31.1inx17.7in)	78x44cm (30.7inx17.3in)



DESCRIPTION OF ACCESSORIES



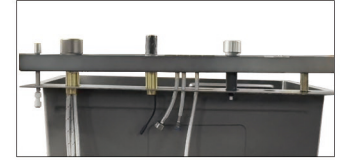
- | | |
|-------------------------|------------------------|
| ① Stainless Steel Sink | ⑦ Drain Strainer |
| ② Pull-Out Faucet Kit | ⑧ Storage Basin |
| ③ Water Purifier faucet | ⑨ Draining Basin |
| ④ Knife Holder Kit | ⑩ Chopping Board |
| ⑤ Soap Dispenser | ⑪ Waste Bin |
| ⑥ Drainage System Kit | ⑫ Cup Washer with Hose |

DESCRIPTION OF ACCESSORIES

- Step 1: Install the pull-out faucet and water switch



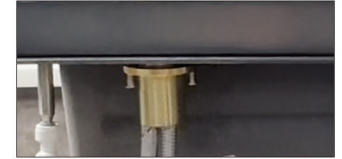
01. Faucet of Digital Display Styles



02. Insert the faucet into the sink



03. Separate the gaskets and screws



04. Fasten the gaskets and screws

Tips:

- A. Please connect the 3 hoses (hot water inlet hose , cold water inlet hose and water outlet hose) to the 3 hoses of switch randomly.
 B. There will be another pipe and line for digital display styles, no need to do anything at this step, just fix the faucet with the sink at this moment.

- Step 2: For sinks with digital display: Motor and gravity ball installation



01. Take apart the gravity ball



02. Fix the gravity ball at the proper position of the faucet pipe



03. Gravity ball installation completed



04. Connect the electricity line with motor



05. Connect the motor to the hose



06. Connect the motor with the faucet and fix the position of gravity ball

●Step 3: Install the cup washer



01.Take out the screw gask



02.Insert the cup washer into the sink



03. Connect the cup washer with the hose

●Step 4: Install the water purifier faucet



01.Disassembly the faucet



02.Insert into the sink



03. Tighten the screws and pipe connector

●Step 5: Soap Dispenser installation



01.Install the tool holder



02.Installation of fixed soap dispenser

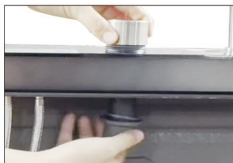


03.Completed installation of plastic bottles

●Step 6: Install the Strainer Controller & Connect the Strainer Controller with Strainer



01.Prepare the accsorise



02.Install in the sink by tightening the screws on top and bottom



03. Use fingernall to pull out the bead from the drive line and insert it into the white hose

●Step 7: Install the Sink Strainer



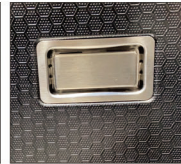
01. Use the provided tool to disassemble the strainer kit

02. Fix the bottom part



03. Use the tool to fasten the up & bottom strainer part and put the filler in

●Step 8: Install the Upper Drain and Drainage Kit



01. Insert the gasket

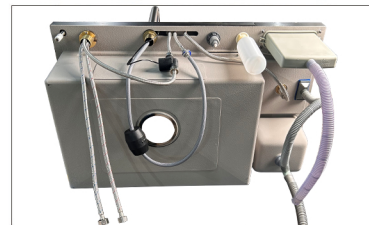
02. Fix the upper drain outside the sink with screw

03. Connect the upper drain to the assembled drainage kit

●Step 9: Connect your kitchen sink to water supply



01. Connect the water inlet hoses to the angle valves.Red angle valves is for hot water and the other is for cold water



Waterfall Sink installation finish!!!



Digital display screen hydroelectricity,no need to connect to electricity