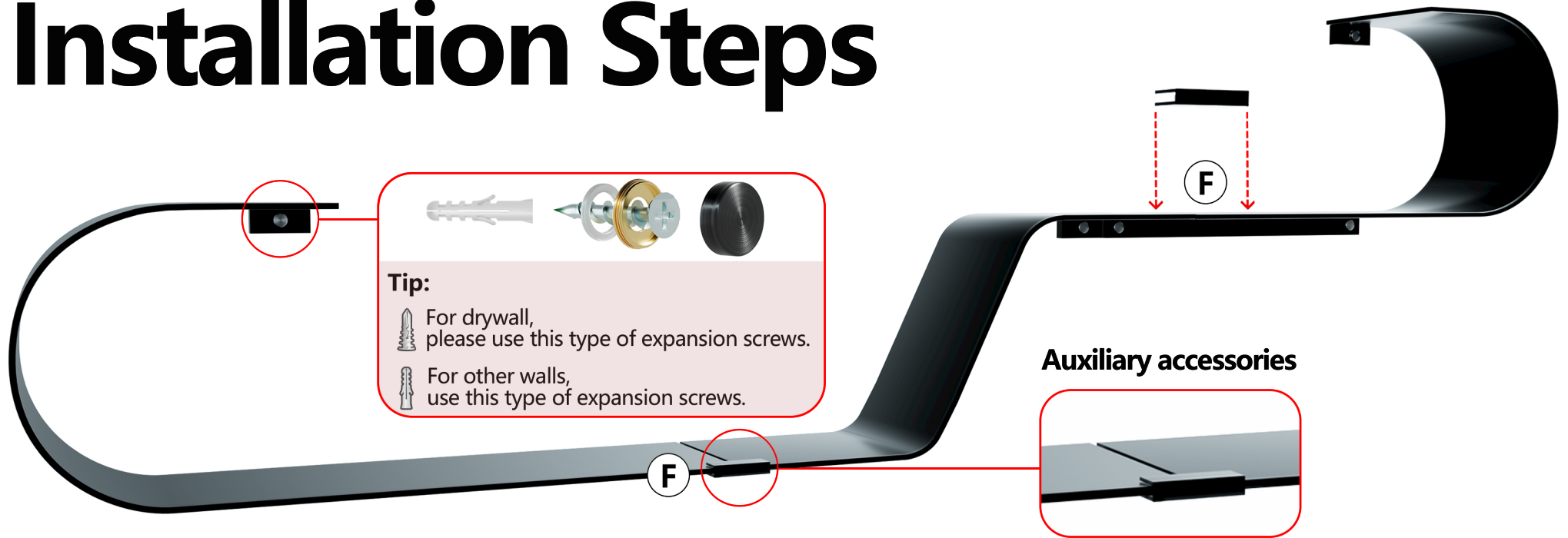




Installation Steps



Tip:

-  For drywall, please use this type of expansion screws.
-  For other walls, use this type of expansion screws.

Auxiliary accessories

In combination mode, U-shaped wedges ensure shelves align uniformly.
In dispersed mode, U-shaped wedges are not required.

INSTALLATION GUIDE • TAP WALL TO ASSESS TYPE

-  1. SOLID SOUND (indicating wood studs) → USE LONG SCREWS ONLY (X NEVER USE ANCHORS)
-  2. HOLLOW SOUND (indicating drywall) → USE SHORT SCREWS + PLASTIC ANCHORS (✓ Anchor must sit FLUSH with wall surface)



OR



(A) X 8PCS



OR



(B) X 8PCS



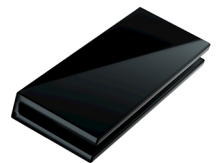
(C) X 8PCS



(D) X 8PCS



(E) X 8PCS



(F) X 2PCS