




ITEM #: RVL-CC160-16 (16 light), RV-CC16042-12 (12 light)


IMPORTANT SAFETY INSTRUCTIONS

- To avoid injury or damage, mount only on a surface that is sturdy.
- To avoid electric shock, make sure the electricity is turned off at the main circuit breaker panel. If you are replacing an existing fixture, turn off the following in order: fixture, wall switch, and main fuse or breaker box.
Note: Some types of fuses must be unscrewed to shut the power off.
- If you are unclear as to how to proceed, please consult a licensed electrician.

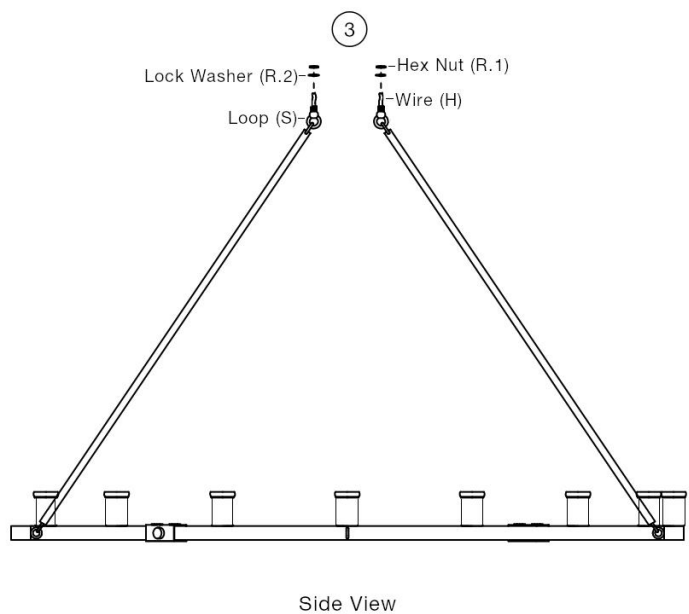
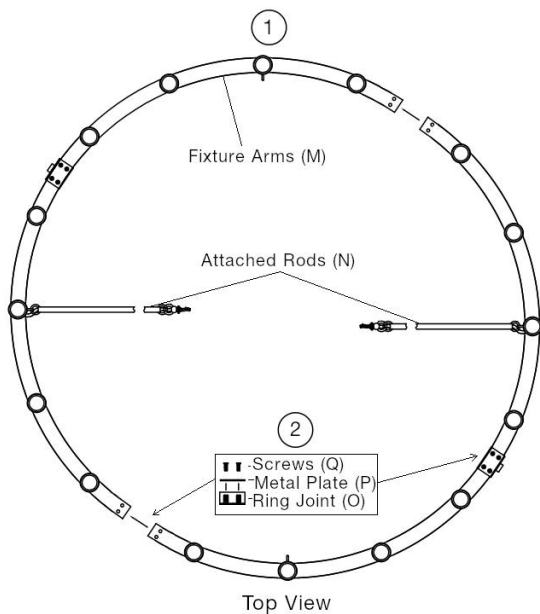
UNPACK THE FIXTURE: Check the contents of the box. Box should contain all items on the parts diagram.

 **For any replacement parts or installation issues, please Contact Us!**
Email: help@kira-home.com
Facebook/Instagram: @KiraHomeDecor
Phone: 888.208.2085

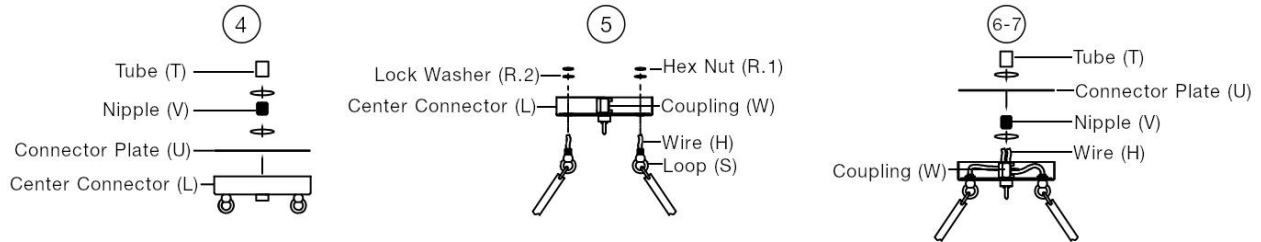
Need help with installation?
Check out our install Video!
Visit: <https://bit.ly/39VEvlz>



ASSEMBLY INSTRUCTIONS



1. Lay out all 4 pieces of Fixture Arms (M) to form its circular shape. Ensure the two pieces with Attached Rods (N) are opposite each other.
2. Secure Fixture Arms (M) together by placing Ring Joint (O) under each arm, ensuring to line up all holes. Secure in place with Metal Plate (P) and Screws (Q). Do this for each set of Fixture Arms (M).
Note: Tighten all Screws (Q) evenly to ensure all sides sit level.
3. Remove Hex Nuts (R.1) and Lock Washers (R.2) from both Wires (H) located above Center Connector (L). Set the fixture body aside.

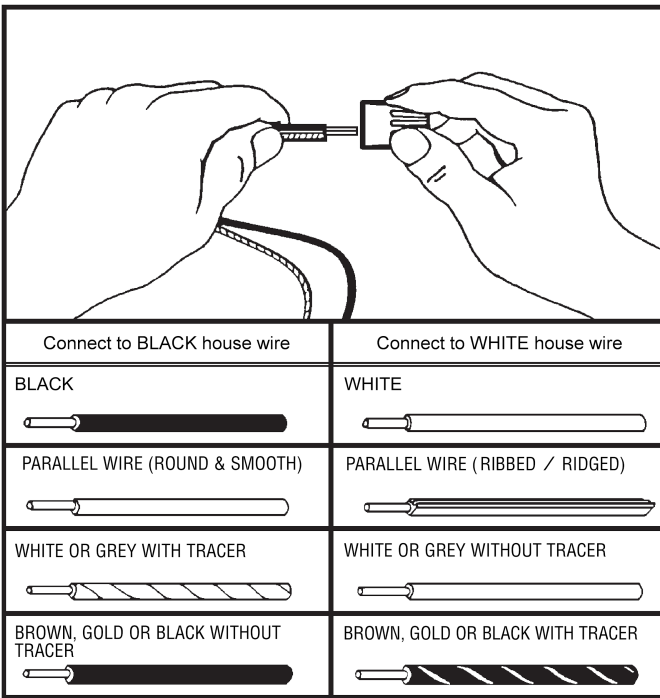


4. Remove Tube (T), Connector Plate (U) and Nipple (V) from Center Connector (L).
5. Thread Wire (H) up through Center Connector (L) until the threading from Loop (S) is protruding through the hole in Center Connector (L). Secure Loop (S) in place with Lock Washer (R.2) and Hex Nut (R.1). Complete this step for both Wires (H).
6. Feed both sets of Wires (H) through Coupling (W), ensuring the wire protectors are in place between them.
Note: The wire protectors should be placed where Wires (H) meet Coupling (W) to protect them from rubbing together.
7. Thread Wires (H) through Nipple (V) and screw Nipple (V) into Coupling (W). Thread Wires (H) through Connector Plate (U) and Tube (T). Secure Connector Plate (U) and Tube (T) to Nipple (V). Set assembly aside.

INSTALLATION INSTRUCTIONS

1. Secure Mounting Plate (A) to the junction box (not included) using Mounting Screws (B) provided. Ensure the attached Screw Collar Loop (E) is pointing down towards the floor.
2. Remove Threaded Ring (F) from Screw Collar Loop (E) by unscrewing it in a counter-clockwise direction. Set Threaded Ring (F) aside.
3. Place Canopy (D) against the ceiling with Screw Collar Loop (E) protruding through the hole in Canopy (D). Adjust Screw Collar Loop (E) and the hex nut above it until 3/8" of the threaded portion of Screw Collar Loop (E) is visible. Remove Canopy (D) and set it aside.
4. Determine desired hanging length using Downrods (J). Secure them together.
5. Thread Wires (H) from Center Connector (L) up through Downrods (J) and Pendant Loop (I). Secure Downrods (J) to Center Connector (L) and Pendant Loop (I) to the top of Downrods (J). Pull through any necessary Wires (H).

6. Use wire cutters to cut Wire (H) 10” beyond the length of Downrods (J) for easier wire connection.
7. Slide Threaded Ring (F) down Wire (H) with the raised end (flange) facing up towards the ceiling. Slide Canopy (D) down Wire (H).
Note: Threaded Ring (F) and Canopy (D) will be used to secure the fixture to the ceiling at a later step.
8. Attach Rods (Y) onto rings on bottom of Center Connector (L) and Fixture Arms (M) with the attached hooks. Carefully lift the fixture (with the help of a friend).
9. Secure Pendant Loop (I) to Screw Collar Loop (E) with Quick Link (X).
10. Insert the end of Wire (H) through the hole in Screw Collar Loop (E) into the junction box.
11. Using the wire graph below, connect the appropriate wires from the fixture to the corresponding wires in the electrical junction box (not included) and secure Wire Connectors (C).



- A. Connect the ground wire (bare copper or green) from your fixture to the:
 - 1) ground wire in the junction box, or
 - 2) ground screw in the junction box
- B. Connect the BLACK house wire to fixture hot wire that corresponds to diagram (black, round & smooth, white/grey with tracer, brown/gold without tracer).
- C. Connect the WHITE house wire to fixture neutral wire that corresponds to diagram (white, ribbed/ridged, white/grey without tracer, brown/gold with tracer).

12. Place all Wires (H) and Wire Connectors (C) back into the junction box.
13. Slide Canopy (D) and Threaded Ring (F) up Wire (H). Place Canopy (D) flush against the ceiling and secure in place by screwing Threaded Ring (F) onto Screw Collar Loop (E) in a clockwise direction.
14. Install bulbs (not included) into Socket (K).

Enjoy your new fixture!

Kira Home

ITEM #: RVL-CC160-16 (16 light), RV-CC16042-12 (12 light) - PARTS DIAGRAM

HELPFUL TOOLS: Safety Goggles, Screwdriver, Wire Cutter/Stripper, Ladder

