

## CARE AND MAINTENANCE:

- Clean regularly with normal detergent and warm water.
- Always make a habit of drying your sink after use and buffing with a soft cloth. This will ensure that no build up of limescale or other mineral deposits can occur.
- Clean the sink once a week using a nonabrasive cleanser such as Barkeeper's Friend and a clean soft sponge. Scrub in the same direction as the natural grain of the sink.
- Never let soap or other household cleaners to dry on the surface of the sink. Most products contain additives which will affect the finish of the sink.
- Never use bleach solutions on the sink, as it is harmful to stainless steel. If left on the sink too long it can cause surface pitting.
- Never use a steel wool pad to clean your sink. Doing so may damage the sink's surface and cause discoloration.
- Minor scratching of the sink's surface is extremely difficult to avoid and is not something to be unduly concerned about. These marks are usually only superficial and can be removed with a proprietary stainless steel cleaner.
- Use of rinse grids will reduce exposure of the bottom of the sink to scratches.

## RUVATI LIMITED LIFETIME WARRANTY

This product has been manufactured and inspected to the highest possible quality standards. Ruvati sinks carry a limited lifetime warranty for residential use.

Should you experience any defects in materials or workmanship within the warranty period, we will repair or replace the defective product, subject to the following conditions:

- Any claim made under this warranty must include a copy of a valid proof of purchase showing the date and place of purchase.
- Our obligation under this warranty is to the original purchaser only, and may not be transferred.
- Product replacement does not include shipping costs or labor installation costs.
- This warranty applies to residential installations only.
- Ruvati reserves the right to examine product in question and its installation prior to replacement.
- If an identical replacement product is not available, Ruvati reserves the right to replace the defective product with a similar product.

**NOTE: Accessories such as rinse grids, cutting boards, strainers are not covered by this warranty.**

This warranty relates to defects in manufacture, materials or workmanship in a Ruvati stainless steel

kitchen sink supplied for installation into domestic premises in the United States. It does not extend to :

- Damage resulting from failure to maintain the product in accordance with the Care and Maintenance instructions in this manual.
- Normal wear and tear, scratches or accidental damage.
- Faults arising from improper use and/or installation.
- Defects in accessories, strainers and rinse grids.

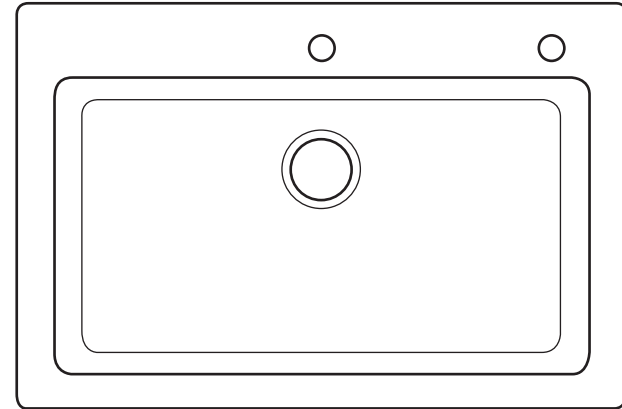
**All incidental or consequential damages are specifically excluded. No additional warranties, express or implied are given, including but not limited to, any implied warranty of merchantability or fitness for a particular purpose.**

Some states do not allow the exclusion or limitation of incidental or consequential damages or limitations on how long an implied warranty lasts, so the above limitations or exclusions may not apply to you. This warranty gives you specific legal rights, and you may also have other rights which vary from state to state.

# RUVATI®

## INSTALLATION GUIDE

# DROP-IN TOPMOUNT KITCHEN SINK



RVM5001, RVM5021, RVM5025, RVM5150, RVM5166  
RVM5173, RVM5176, RVM5923

Register your product at: [www.ruvati.com/register](http://www.ruvati.com/register)

## RUVATI®

Address: 2705 Meister Pl, Round Rock, TX 78664

USA Phone: 1.855.478.8284

Email: [info@ruvati.com](mailto:info@ruvati.com)

## ATTENTION INSTALLER:

Please read all information below and keep this installation guide for future reference.

Keep the sink fully covered after installation to keep away dirt and construction dust, until all construction is complete and the site has been cleaned.

Ruvati recommends that this sink be installed only by a professional installer.

**Sink edges may be sharp and can cause accidental injury if not careful. Wear cut-resistant protective gloves during installation.**

Inspect the sink and box contents immediately upon delivery. If you see any shipping damages on the sink, or missing parts, contact Ruvati Support.

Templates are only provided as a guide. Place template on sink to ensure the template will give you the proper cutout for the sink. Ruvati is not responsible for improper sink or countertop installation. **Ruvati is not liable for any damages to sink or countertop or personal injury during installation.**

Follow all local plumbing and building codes.

## TOOLS REQUIRED

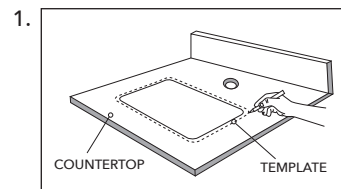
Plumbers Putty  
Sink  
Sink Mounting Clips  
Silicon Caulk

Phillips Head Screwdriver  
Jigsaw or Keyhole Saw  
Pencil  
Sink Cut-Out Template

## INSTALLATION

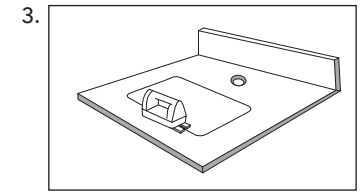
1. Place the sink cut-out template on the countertop, where the sink is to be installed. Trace around the outside perimeter with a pencil.

2. After tracing, remove the template. Use a straight edge if necessary to straighten out the traced outline. Use a drill with a 7/8" spade bit to drill four pilot holes, one in each corner inside the outline. These holes will be your starting points for sawing the

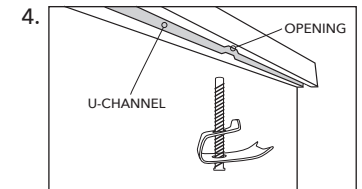


hole, so they must be large enough to fit the blade of a jig saw or keyhole saw.

3. Cut the hole for the sink, using a jig saw to cut along the outline between each hole.

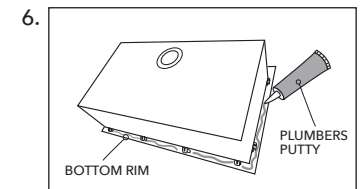


4. Insert Mounting Clips into the U-channel by inserting them into the widened openings of the U-channel and then sliding them into position. Place 2 clips on each of the shorter sides, and 2 or 3 clips on each of the longer sides.

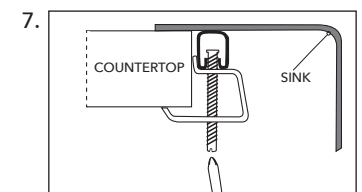


5. Attach the Basket Strainer Drain Assembly (included) to your sink by following the Installation Instructions included with the drain assembly. The Basket Strainer Drain Assembly is only for standard drain installation. If you are installing a Garbage Disposal unit, you will not be using the Basket Strainer Drain Assembly for that sink bowl. Instead, attach the Disposal Flange unit that came with your Garbage Disposal unit, by following the disposal manufacturer's instructions.

6. Apply a "rope" of plumbers putty or caulk around the perimeter of the underside of the sink. Flip the sink over and carefully place it into the countertop opening, with all of the drains and attachments secured. Press down firmly to seat the sink against the countertop.



7. Rotate the Mounting Clips into position so that they are gripping the Countertop. Use a screwdriver to tighten the screws.



8. Apply a bead of silicone caulking around the perimeter of the sink where it meets the counter to seal any gaps. Fill the sink with water and leave it overnight to add weight and help it settle in place. Afterwards, retighten the mounting clips if necessary.