

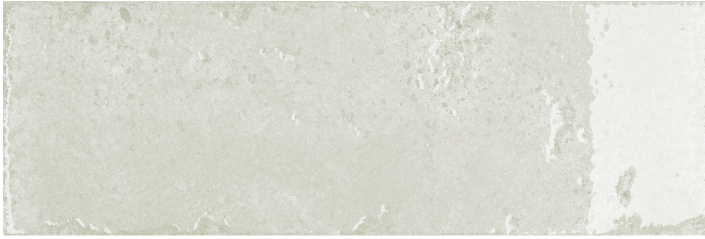
Inhale™ shimmers with style, with color and with updated appreciation for the classic subway tile design. Blues and greens are standouts as the mixed finish replicates the way light reflects off the surface of ocean water – a glistening effect that enlivens a space. Available in four striking colors, this ceramic tile is sure to create a signature wall moment in any space.

INHALE™

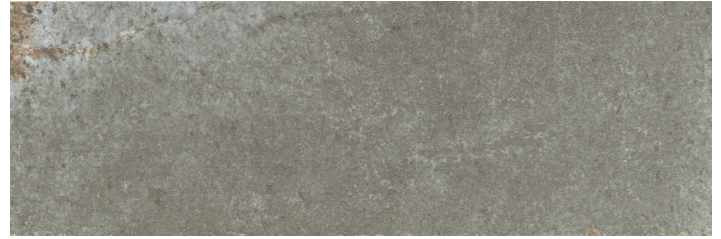
*Glazed Porcelain***



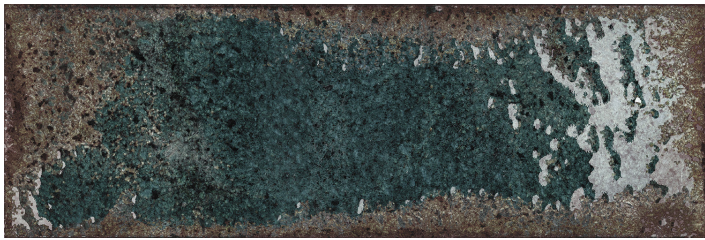
WALL  RESIDENTIAL  COMMERCIAL  INDOOR  OUTDOOR  POOL 



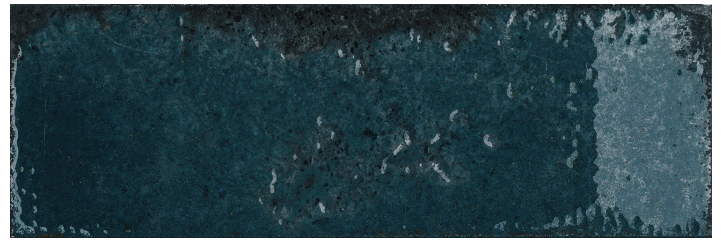
Blanco







Gris



Verde



Azul

Sizes					
	4"x12" 3.94"x11.81"	6"x6" 5.91"x5.91"	8"x9" Hex 7.80"x8.98"	1/2"x12" Jolly	
Thickness	8mm	8mm	10mm	8mm	
Grout Joint Recommendation	1/8"	1/8"	1/8"	1/8"	
Testing	Breaking Strength C648	Chemical Resistance C650	Water Absorption C373	Scratch Hardness MOHS	Shade Variation Rating
Results*	>350 lbf	Resistant	<3.0%	7	V2

-  Sustainability Attributes
- Health Product Declaration (HPD) provided upon request
 - Product Packaging is 100% recyclable
 - VOC Free

*For more information visit www.emser.com. Always consult a professional for proper usage and installation.

**Frost Resistant Tile. This product is not classified as true porcelain as the water absorption falls within 0.5% - 3%. However, this product is able to be used almost anywhere porcelain tile is used.