

# NOTICE!

**TOLL FREE Numbers:**

**1-866-283-4412**

**Email address:**

**customerservice@t2products.com**

**PLEASE DO NOT  
RETURN THIS UNIT TO  
THE RETAIL STORE**

## TROUBLESHOOTING GUIDE

PROBLEM	SOLUTION
<b>1. CONDENSATION</b>	THIS IS CAUSED BY LOWER TEMPERATURES ON OUTSIDE OF PRODUCT COMBINED WITH BODY HEAT ON INSIDE OF PRODUCT. WHEN THIS OCCURS, AVOID TOUCHING WALLS TO REDUCE CONTACT LEAKAGE. LEAVING DOORS AND WINDOWS OPEN WILL REDUCE CONDENSATION.
<b>2. MILDEW</b>	TO AVOID MILDEW, NEVER STORE YOUR PRODUCT WET OR DAMP. HOWEVER, IF MILDEW OCCURS, USE A SOFT BRISTLE BRUSH OR SPONGE WITH MILD SOAP TO CLEAN. LET DRY IN THE SUNLIGHT AND APPLY SEAM SEALER COMPOUND ON INSIDE SEAMS.
<b>3. REPAIRING A TEAR</b>	FOR SMALL TEARS USE A SELF-ADHESIVE PATCH KIT. WE RECOMMEND A REPAIR SHOP FOR LARGER TEARS.
<b>4. FAULTY ZIPPER</b>	ALL OF OUR TENTS COME WITH SELF-REPAIRING NYLON COIL ZIPPERS. IF THE ZIPPER SEPARATES, YOU CAN MOVE THE SLIDER TO THE BEGINNING OF THE ZIPPER TAPE AND REWORK THE ZIPPER. LOCAL AWNING AND UPHOLSTERY REPAIR SHOPS MAY BE ABLE TO ASSIST YOU.
<b>5. FLOOR CONDENSATION</b> <small>(ONLY APPLICABLE ON PRODUCTS WITH FLOOR)</small>	TO PREVENT FLOOR CONDENSATION USE A GROUND CLOTH. PLACING A GROUND CLOTH UNDER YOUR PRODUCT WILL PROLONG ITS LIFE. GROUND CLOTH SIZE SHOULD BE SLIGHTLY SMALLER THAN PRODUCT FLOOR SIZE.

### WARNING

THIS RECREATIONAL ITEM IS NOT INTENDED FOR USE AS A PERMANENT STRUCTURE.

This Tent/Shelter has been developed and is intended to provide protection from sun and light rain. DO NOT use any gas or flame sources under or near this product. This product is NOT WATERPROOF.

Excess water build-up can cause the frame system to become unstable, and collapse, causing injury.

Any personal accessories or modifications to product should be removed before the onset of inclement weather such as heavy rain, wind, lightning, hail, snow, etc. This product should be completely dismantled to avoid permanent damage to product components and avoid any possibility of personal injury. This product is not a toy. This product is not designed for use by children without adult supervision. Under no circumstances should this product be used as a permanent or temporary storage facility for children's toys, garden tools, personal belongings or similar valuables.



**13FT. X 13FT. INSTANT CANOPY  
E02GA0203-003-01**

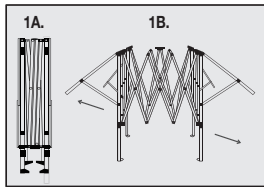


## • Introduction •

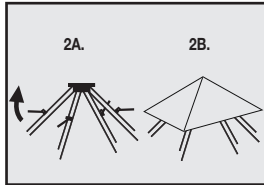
WE ADVISE YOU TO ASSEMBLE THIS PRODUCT AT LEAST ONCE AT HOME BEFORE GOING ON A TRIP. Obtaining a familiarity with the assembly and disassembly processes will help ensure your satisfaction and ease concerns you may have should you find yourself setting up in the dark and adverse weather conditions.

GET THE MOST ENJOYMENT FROM YOUR PRODUCT BY READING THIS OWNER'S MANUAL THOROUGHLY; THEN FOLLOW OUR CAMPING SUGGESTIONS OUTLINED BELOW.

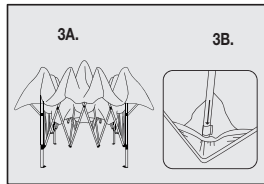
## • Setup •



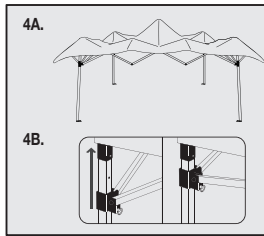
**1A)** Stand the Instant Canopy frame upright in the center desired set-up location.  
**1B)** Stand opposite a partner and lift frame off the ground walking backwards away from partner.



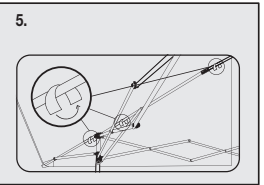
**2A)** Turn up each thin pole which connect to the roof pole.  
**2B)** Attach a small canopy top to the four thin pole to become a small roof.



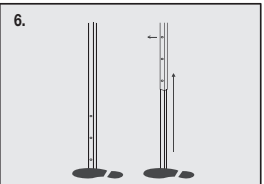
**3A)** Place canopy top over partially opened frame.  
**3B)** Align eave extension corners of the top and the frame then attach the elastic loops to each corner of the frame.



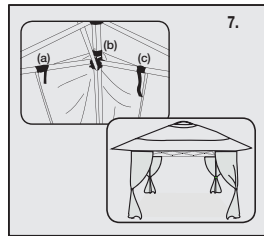
**4A)** Open frame completely  
**4B)** Engage the slider at each corner by placing one hand on the truss, one hand on the top of the leg and pushing up until the pin "clicks" in place.



**5)** Attach the hook and loop straps to each corner and overhead truss bars.



**6)** Extend each inner leg to raise canopy to the desired height by stepping on the lower footpad and allowing the snap button to lock in place.



**7)** Attach corner curtains to top truss bars (a), (b) & (c).



**8)** Your Instant Canopy is now complete!

## • Warning •

Not complying with these warnings will void your Instant Canopy warranty!

DO NOT set-up or leave your Instant Canopy assembled in rain, hail, sleet, snow, drizzle, lightning, strong winds or any harsh weather conditions.

DO NOT allow water of any kind to accumulate on the canopy top.

Use Tie-downs, Stakes or Weight Bags to secure your Instant Canopy in windy conditions. Commercial Stake Kits and Weight Bags need to be purchased as accessories separately.

Always follow directions when setting-up your Instant Canopy. Be aware of hands and fingers when expanding or collapsing frame.

It is recommended to remove canopy top from frame after take-down. Storing top on frame may result in fabric tears or other damage requiring repair or re-purchase.

Never clean the canopy top in a washing machine - serious damage will result. If cleaning is required, while set-up on the frame, use a light detergent on a cloth and gently clean top by hand, then rinse off with a garden hose.

DO NOT use detergent or hand cleaner if top has custom silk-screened graphics.

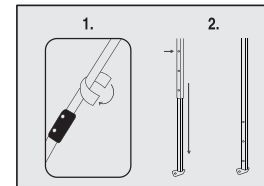
Allow top to dry completely before storing.

Keep your canopy off of steep slopes and inclines

DO NOT use your Instant Canopy as a permanent shelter. It is designed for temporary use only!

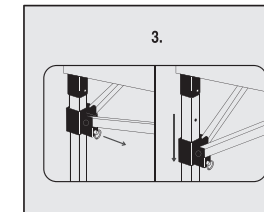
Never leave your Instant Canopy unattended.

## • Take Down •

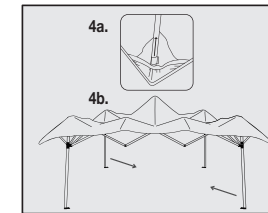


**1)** Detach hook and loop straps from the top and curtains.

**2)** Raise a leg off the ground and depress the snap button to disengage the lower leg. Repeat until all four legs have been lowered.

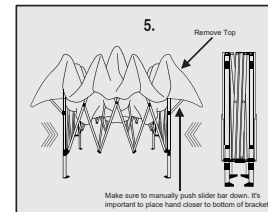


**3)** Pull the pin on the slider at each corner bracket to disengage the frame and allow it to close.

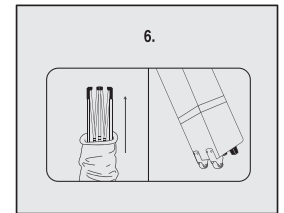


**4A)** Remove elastic loops on the top from each eave extension corner.

**4B)** Stand opposite a partner and grasp the lower truss bar. Lift the frame off the ground and slowly walk toward partner being careful not to pinch fingers.



**5)** Remove canopy top and completely close frame. We recommend storing canopies without the top to avoid mildew and pinch tears.



**6)** Store frame and top in roller bag.