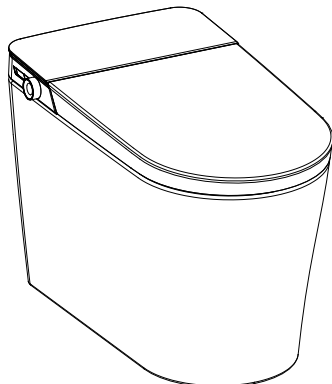


Smart Toilet USER MANUAL

Model No: U13G/U14G



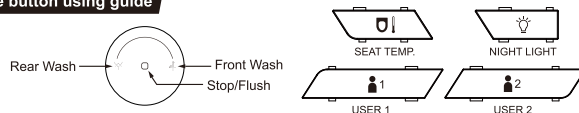
Edition: V 2023.04.08

• Before beginning installation, read all instructions first. Save these instructions for future use.

Product functions

Heated Seat, Soft Night Light, EnergySaving, Warm Air Drying, Rear Wash, Defecation clean, Front Wash, Moving Clean, One Touch, Nozzle Cleaning, Nozzle Self-clean, Auto flush, Foot sensor flush, Remote control flush, Power-off flush, user defined, ambient light, Adjustable Water Temperature, Seat Temperature, Air Temperature, Water Pressure and nozzle position.

Side button using guide



Please follow up the process below before product operation.

1. Turn on the valve.
2. Plug the power cord into electrical inlet.

Standby Model

In state of no seated, Long press the side button or "STOP/FLUSH" on the remote for more than 3 seconds to enter standby mode. When in standby mode, quickly press the side button to exit. In cleaning mode, quickly press the side button to exit the current cleaning mode.

Rear Wash

In the seated mode with no cleaning action, rotate counterclockwise to enter Rear wash.

Front Wash

In the seated mode with no cleaning action, rotate clockwise to enter Front wash.

When in the Rear /Front wash, quickly rotate clockwise or counterclockwise to adjust the nozzle position. Long rotate clockwise to start moving clean, long counterclockwise to exit it.

Air Dryer

In the seated mode with no cleaning action, long press the side button for 3 seconds to start air drying, in air dry mode: quickly rotate clockwise or counterclockwise to adjust the air temperature.

Seat Temperature

In the seated mode with no cleaning action, long press the side button for 3 seconds to start air drying, in air dry mode: quickly rotate clockwise or counterclockwise to adjust the air temperature.

Flush

a. Foot induction flush:

In the state of no seated, trigger foot sensing when leaving the seat, and flush once. In the state of seated, the foot sensor not work.

b. Side button flush:

In the state of no cleaning and drying, quickly press to flush once.

c. Power-off flush:

When there is no electricity, quickly press to flush once.

User defined

In the state of no seated, press button "User 1/2" to enter setting mode, it can set rear wash, front wash, wind /seat / water temperature, water pressure, nozzle position, moving clean, after setting, long press the User 1 or 2 to save, when you hear two ding ding sounds, means save successful.

In the state of no seated, quickly press "User 1/2" to enter the set cleaning mode. After the cleaning is completed, it will automatically flush and dry. During this process, the gear can be reset, and long press the user 1/2 to save. Quickly press the same user button during cleaning: turn on/off moving clean.

Night night and ambient light

Press the "NIGHT LIGHT" on the side button or remote control to turn on /off the the night light and ambient light.

Packing list

No.	Name	Quantity	No.	Name	Quantity
1	Smart Toilet	1	8	Remote Control Manual	1
2	User Manual	1	9	Remote control expansion screw rubber	2
3	Remote Control	1	10	Flange	1
4	Remote control mounting screws	2	11	G1/2 To G3/4 Valve	1

1

5	Pair of AAA battery	1	12	9V Battery	1
6	Battery Box	1	13	Throttling valve disc	1
7	Water Filter	1	14	G1/2 to 1/2-14NPSM Adapter	1

Precautions for use

⚠ Attention	It may cause minor injury or damage, be sure to always pay attention.
🚫 Forbiddance	Do not operate forbidden content.
📌 Enforcement	Must comply with the enforcing content.
🔌 Ground	Connect the ground properly

⚠ Warning

🚫 Do not disassemble	It is absolutely forbidden to disassemble, repair and transform this product by yourself. It may cause fire, electric shock and other accidents.
🚫 No watering	Do not pour water or detergent on the power plug. It may cause fire, electric shock and other accidents.
🚫 Forbiddance of fire	Do not bring lit cigarettes or burning species close to the product. It may cause a fire.
🚫 Forbiddance	Please do not continue to use the product when the product fails. Please contact the after-sales service staff for maintenance. When the following situation occurs, please remove the power plug and close the inlet angle valve. 1. Leakage from the inside of the product line; 2. The product is unusually hot; 3. The product makes an abnormal sound and smell; 4. The product is burnt. If the product is still used in the event of malfunction, it may cause problems such as fire, electric shock, water inflow in the room. (The normal life of this product is six years, the continued use beyond the service life may lead to accidents.)
🚫 Forbiddance	Only tap water can be used. Otherwise may cause infectious dermatitis and other diseases.
🚫 Forbiddance	Do not use loose power outlet. It may cause a fire or electric shock.
🚫 Forbiddance	Please use the power outlet within the specified conditions (110-120V~, 13A, 60Hz socket). Do only use 110-120V~ power supply. Using power beyond the socket regulations may cause the socket to heat up and cause a fire.
🚫 Forbiddance	Do not damage the power cord and seat wire. 1. Do not damage, do not process, do not heat; 2. Do not force bending, do not curly tied, do not pull; 3. Do not put heavy objects on the power cord and the seat lid connection, ignoring product damage and continuing to use may result in fire, electric shorts and other conditions.
📌 Enforcement	1. This product belongs to the electrical products, do not put it in places where there is water or the places of high humidity. When used in the bathroom, please install ventilation fan or ventilation port to keep the bathroom in good air circulation. Otherwise, it may cause a fire or electric shock. 2. If the power cord is damaged, do not disassemble it yourself and must be replaced by the manufacturer or its service department or relative department.
🔌 Grounding	Please check if grounding is done. A product that is not grounded may cause an electric shock in the event of a malfunction or leakage.

⚠ Attention

🚫 Forbiddance	Forbiddance sitting on the seat for a long time, the seat temperature should be adjusted in low-grade, please note that low-temperature burns. The following personnel should set the seat temperature at low-grade when using the toilet. 1. Children and elderly people who cannot adjust the temperature to the right degree. 2. Patients, persons with disabilities and other people who can not move freely. 3. Lethargic crowd because of taking hypnotics (Such as sleeping pills, cold medicine, etc.) deep drinking and over fatigue.
🚫 Forbiddance	Do not forcibly stretch the connecting pipe of the water supply pipe. Otherwise it may cause water leakage.
🚫 Forbiddance	Do not rely on the seat cover or forcibly press the control panel. Otherwise it may result in malfunction or breakage. Forced application of force may cause seat cover and control panel damage, resulting in personal injury.
🚫 Forbiddance	Do not place containers containing liquid such as vials, cups, cosmetics, pharmaceuticals, etc. or small metal objects on top of the product. Inadvertent entry into the product may result in fire or electric shock.
🚫 Forbiddance	Do not place the product in direct sunlight, otherwise the appearance of products may be aging deformation.

2

🚫 Forbiddance	People with disabilities, mental retardation, etc. (including children) need to use this toilet under supervision, do not let children play with this toilet. Do not use the toilet to flush expect shit, urinate and toilet paper, or it may cause toilet jam, sewage overflow. Please do not hit the ceramic to prevent damages that result in leakage. Please do not use in the environment below 3°C.
📌 Enforcement	When installing the inlet angle valve, please tighten firmly. Otherwise it will lead to water leakage. Prevent damage caused by freezing. Freezing can cause damage to the water hose and product interiors and cause water leakage. When traveling for long periods of time or when not in use, please unplug the power plug from the outlet. Unplug the power plug when lightning occurs. This product is only for bathroom, and should not be used for any purposes other than the ones described in this manual. Otherwise maybe cause to fire, electric shock, personal injury or malfunction. Do not allow urine and other contaminants to touch the smart toilet. Doing so may cause odor or cause malfunction. Do not forcibly close the seat and seat cover. It is necessary to avoid the collision of the seat lid and the seat cover when turning them. Otherwise maybe cause malfunction. Don't clip to the fingers while seat and seat cover switch, otherwise maybe cause bruise. For external maintenance, unplug the power plug from the socket for safety reasons. Otherwise maybe get an electric shock.

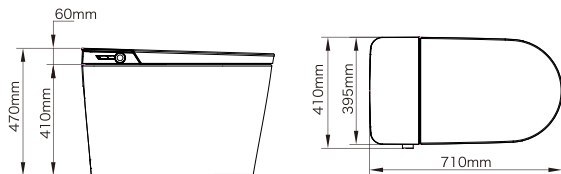
Technical data

Rated voltage	110-120V~		
Rated frequency	60Hz		
Rated power	1050W (15°C±1°C inlet water temperature)		
Length of wire	1.2m		
Water supply mode	Directly connected to the channel		
Ambient temperature	About 3°C to 40°C		
Water supply temperature	About 3°C to 35°C		
Water pressure range	0.12MPa-0.8MPa		
Safety devices	Electrical leakage protector, seated sensor		
Decommutating apparatus	Heating method	Instant heating	
	Warm water temperature	Four grades (Room temperature to 40°C)	
	Spray volume	Buttock cleaning	About 0.35 to 0.65L/min
		Women-only	About 0.35 to 0.65L/min
Drying device	Warm water heater	1100W	
	Safety appliance	Temperature sensor, temperature fuse, temperature jumper, flowmeter	
	Wind speed	>4m/s	
Thermal seat	Air temperature	Four grades (Room temperature to 50°C)	
	Drying heater	200W	
	Safety devices	Double-sheet-metal switch, temperature fuse	
	Deodorant	Activated carbon	
Thermal seat	Power consumption	1.5W	
	Seat temperature	Four grades (Room temperature to 40°C)	
	Seat heater	45W	
	Safety devices	Temperature sensor, temperature fuse	
Switch structure	Damping slowdown		

Rated power: at room temperature 20±5°C, inlet water static pressure is 0.18+0.02MPa. The average power of turning on the cleaning function and working steadily for one cleaning cycle at the inlet temperature of 15±1°C.

3

Product size

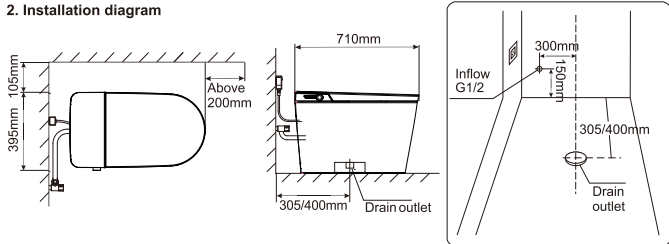


Precautions before installation

1. Installation space

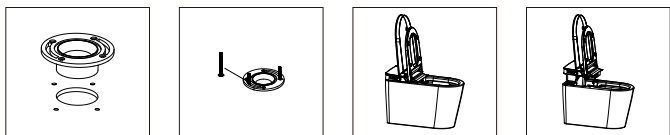
- ① To ensure that there is enough space for installation at the same time, please confirm the door switch does not affect the product's installation. The distance of water inlet pipe to the ground should be more than 150mm.
- ② Before installation, please confirm the location of the outfall and wax seal (For specific location please refer to the logo shown on the right)

2. Installation diagram



Product installation methods

1. The installation of flanges and ceramics



1. According to the position of the four screw holes of the flange, make four holes around the floor drain outlet, and drive in expansion screws to fix the flange.
2. Insert the toilet mounting bolts into the grooves of the flange, then align the flange with the sewage outlet and tighten the screws to fix it.
3. Lift the toilet lid and seat ring, hold the position under the cleaning nozzle with your hand and lift out the entire upper part of the toilet.
4. Loosen the electrical wires and braided hose attached to the top half of the toilet.

4

Product cleaning and maintenance methods

Warning: waterproof toilet cleaning precautions

- Do not clean the product with your hands in case of damage or failure, to avoid secondary failure.
- Do not use hydrochloric acid detergent, thinner, bleach, benzene or strong detergent to clean the surface of the toilet. Do not allow pesticides, air fresheners and deodorants to stick to the toilet bowl.
- The body discoloration, cracking and damage caused by the use of the above-mentioned reagents, even within the warranty period also need to be paid the services.

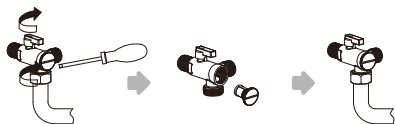
1. Nozzle cleaning

- ① On the machine power mode, do not sit on the seat.
 - ② Press "Nozzle cleaning", entering the manual cleaning nozzle mode. (Can not activate "nozzle cleaning" mode when seated)
 - ③ Please use soft brush or soft cloth when cleaning.
 - ④ After the cleaning is completed, press the stop button or in the seating state, the cleaning tube is automatically retracted.
- Warning: do not force out or push into the cleaning tube during cleaning, or it may lead to machine failure.

2. Filter cleaning

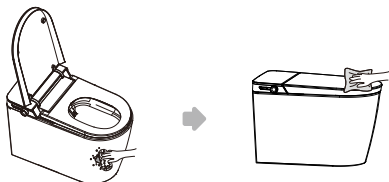
When the water supply valve is closed, cut off the machine water supply, do the following operation.

- ① Shut off inlet valve by clockwise rotation
- ② Unscrew water filter by a coin or slot screwdriver
- ③ Take out water filter and clean by toothbrush or other cleansers. Mount water filter back after cleaning.
- ④ Turn on inlet valve by counterclockwise rotation

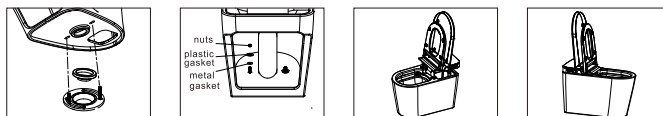


Toilet appearance cleaning method diagram

- ① Please unplug the power plug from the socket or press the reset button on the leak protection.
- ② Use a soft cloth or sponge stained with neutral detergent to clean the machine.
- ③ Wipe the whole machine with cotton cloth after cleaning.



6



5. Put the flange sealing ring on the flange, and then align the mounting bolts through the mounting holes at the bottom of the toilet.

6. Put metal gaskets, plastic gaskets and nuts on the bolts in sequence, and then tighten the screws to fix them after the installation is stable. (Please process this installation from the top of the toilet bowl.)

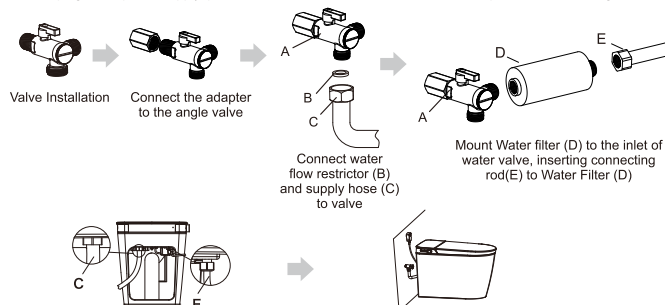
7. Following step 4, reconnect the electrical wires and braided hose.

8. Align the upper half of the toilet with the ceramic and re-fasten with the ceramic.

2. Connect the water supply pipe

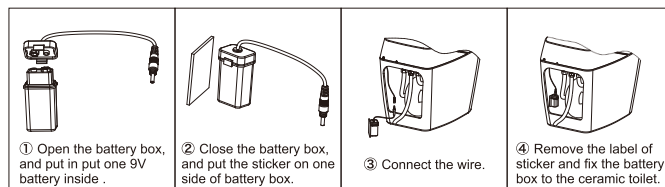
⚠ Before installing the valve, please drain all the impurities and sewage in the pipes. (Discharge the water for 1 to 2 minutes)

- ① When the water supply valve is closed, remove the old angle valve and replace it with the machine-equipped angle valve. Please use the supply hose included. Do not use the old one.
- ② Connect the supply line with inlet valve.
- ③ After the machine is installed, open the knob to detect no leakage at A, B, C, E.
- ④ Inspection is correct, plug in the power supply, press the "manual flush" button to confirm the siphon effect of sewage.



Connect the power supply after installation.

3. Battery Installation



3. Seat toilet management methods in winter

In order to prevent freezing in winter, if there is no heating device inside the toilet, please wrap the connecting pipe with cloth or use other insulation materials for insulation.

- When the ambient temperature is below 0°C.
1. Stop using the product;
 2. Pull out the power plug or press the reset button on the leak protection;
 3. Close the inlet valve.

• Note:

- Please tighten the filter firmly, otherwise it may cause water leakage. Do not grab the filter net too strongly as it may distort or rupture.
- When blockage blocks the filter, the pressure of the flushing water may not be enough, so please clean the toilet regularly once in three months.
- We recommend that you do not use detergent when cleaning. Clean it directly with tap water.

How to deal with common problems

Problems	Check	Handling
Functions does not work at all.	The seat sensing area uses cloth cover, mat and other items.	Please remove the cloth cover, mat and other items.
	Power is cut.	Please wait for power recovery.
	Socket is loose or poor contact.	Plug in, ensure good power supply.
	Whether the leakage protection reset button is pressed.	Please press the reset button on the leak protection.
Flushing	No water.	Please wait for the water supply to resume.
	Whether the inlet valve is open.	Open the inlet valve.
	Whether the filter screen clogged with dirt	Please clean the filter
	Whether the water supply tube is bent and clogged.	Eliminate the water supply pipe bending.
	Water pressure is set at low-grade.	Turn the water pressure up to high.
	Flushing power is not strong enough.	Whether the filter screen clogged with dirt
Clean the nozzle to see if there is any blockage.		Please clean the nozzle.
Water temperature is not high enough.	Whether the water temperature is set at low or normal temperature.	Turn the water temperature up to high.
No water supply when flushing.	Press the "Rear Wash" or "Front Wash" key for about 60s, the machine will automatically stop.	Please restart cleaning.
	The body is removed from the seat during the cleaning process.	Please sit back in the seat circle and restart cleaning.
Toilet Seat	Thermal seat's heating strength is set in the low or off state.	Turn the seat temperature up to high.
	The toilet is set in the energy-saving state.	Please exit energy-saving state.
	Whether the power outage.	Please wait for power recovery.

7

印刷材质：A4纸正反面