



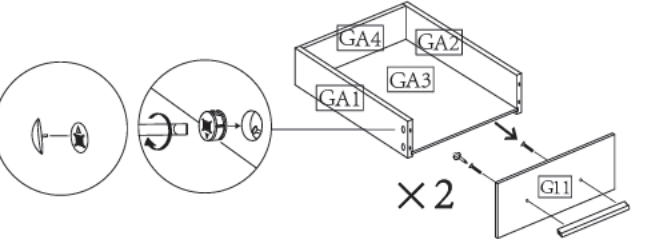
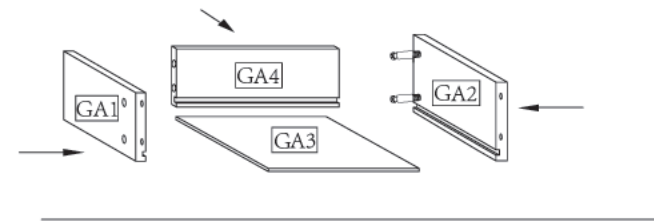


STEP 11

● Install shelves GA3 , GA1,GA4,GA2in order, and then G11.

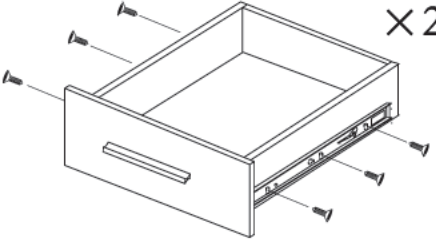
HARDWARE LIST		
A		16PCS
C		16PCS
G		4PCS
I		2PCS



● Use G SCREWS to fix the handle on the shelf G11. Repeat for the second drawer.

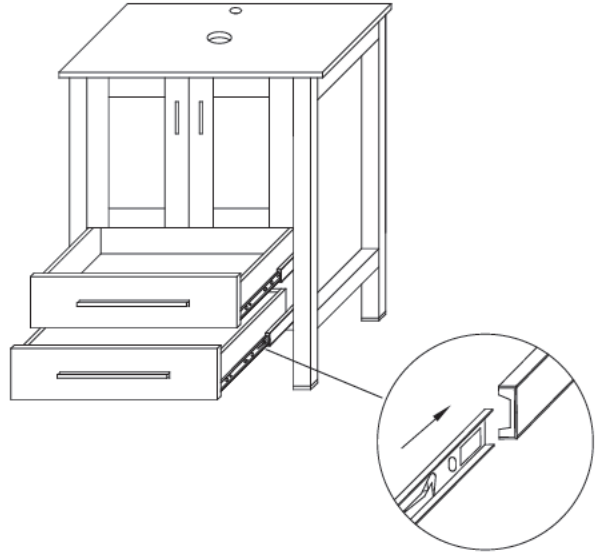
STEP 12

HARDWARE LIST		
E		12PCS



● Insert the screws to connctet the slides(M-2) to the drawer side.

STEP 13

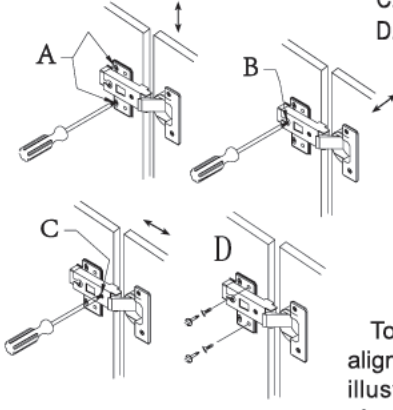


● Connect the drawer to the slide inside the cabinet.Then slide the drawer in and out to ensure smooth operation.

STEP 14

HARDWARE LIST		

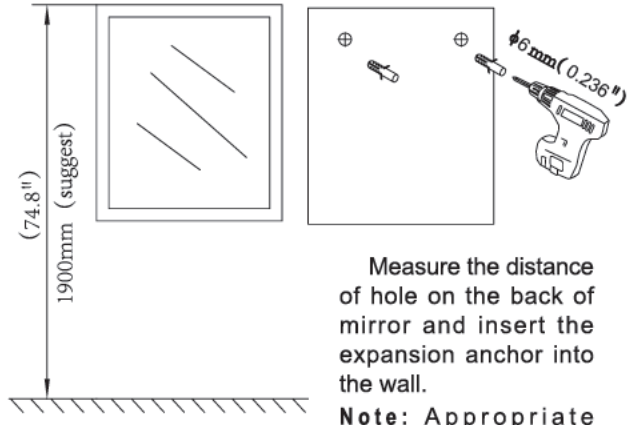
- A.height adjustment
- B.depth adjustment
- C.side to side adjustment
- D.after adjustment A/B/C, tighten screws.



To ensure proper cabinet alignment, refer to the above illustrations for instructions about adjusting the cabinet height, depth and lateral movement.

STEP 1

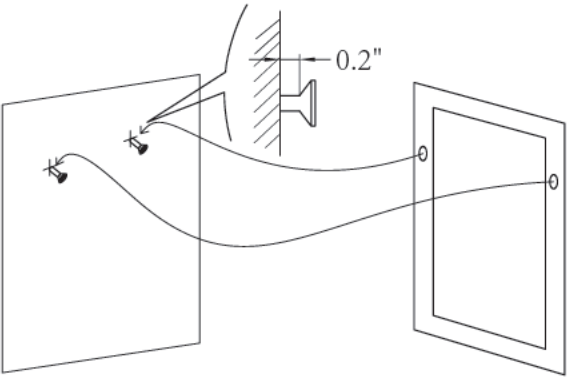
HARDWARE LIST		
L		2PCS



Measure the distance of hole on the back of mirror and insert the expansion anchor into the wall.
Note: Appropriate distance from the top of mirror to the ground is 74.8".

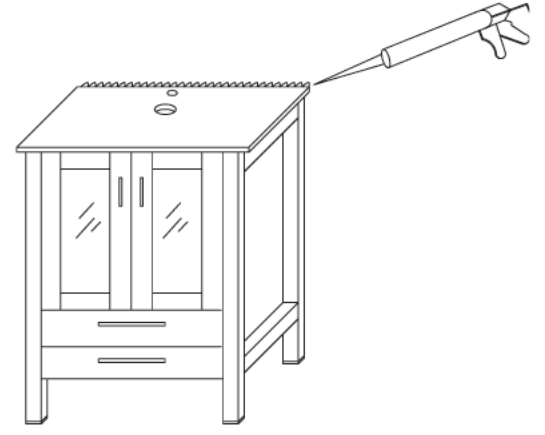
STEP 16

HARDWARE LIST		
K		2PCS



Insert the expansion into the anchor. Leave about 5mm (0.2") clearance for the mirror. Then connect the mirror.

STEP 17



To help prevent mildew, apply sealant to the space between the wall and the edge of the cabinet.

CARE AND CLEANING

- Many cleansers contain abrasive and chemical substance which is not suitable for cleaning stainless steel, enamel, plating or plastic products. You may use mild cleansers or soaps to clean the surfaces. Wipe any splashes of cleaner solutions from the surface with a clean soft cloth.
- Maintain ventilation in the bathroom and separate the dry area from the damp one if conditions permit. Try to open the door and windows of the bathroom to maintain adequate ventilation.
- This cabinet is built to withstand normal bathroom humidity. For best results, keep this vanity dry and take necessary steps to minimize bathrom humidity by opening windows and doors and using the exhaust fan (if available).
- To maintain the cabinet door, clean and wipe the door regularly with a soft cloth. Wipe condensation with a dry, soft cloth. Keep away from fires and high temperatures.
- Please do not sit, lean or step on the basin cabinet.

FEEDBACK ★★★★★

Thank you very much for purchasing from us.

We have always been trying to provide the best service and reliable products for every customer.

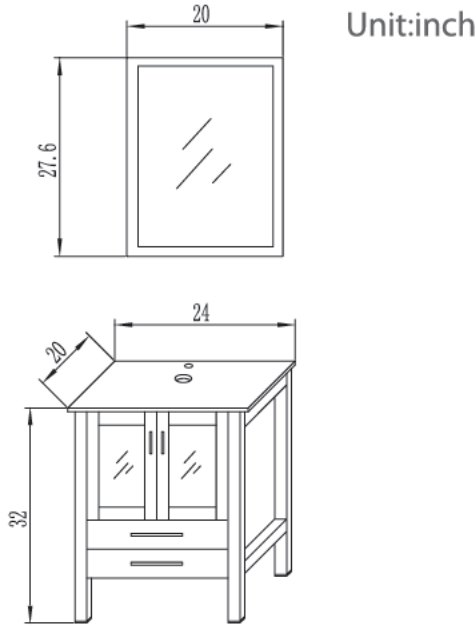
We sincerely hope you will be satisfied with our products and leave us FIVE STARS and POSITIVE feedback/review in our page.

However, accident may happen sometimes, please contact us to resolve any issue before leaving a negative feedback.

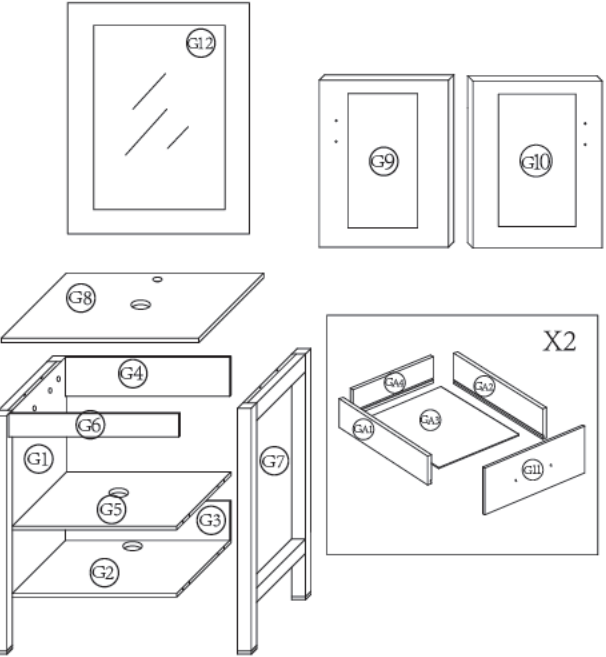
Many thanks and welcome to our shop again!



DIMENSIONS



ASSEMBLY DIAGRAM

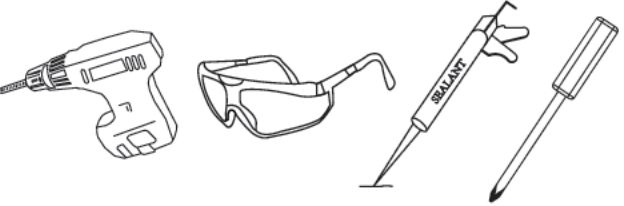


PARTS LIST

PARTS LIST			HARDWARE LIST		
NO.	DESCRIPTION	QTY	NO.	DESCRIPTION	QTY
G1		1	A	CAM LOCK	41
G2		1	B	CAM SCREW	41
G3		1	C	CAM LOCK COVER	41
G4		1	D	WOODEN DOWEL	14
G5		1	E	SCREW	48
G6		1	F	HINGE	4
G7		1	G	HASCREW(φ4x18mm)	8
G8		1	I	HANDLE	2
G9		1	J	HANDLE	2
G10		1	K	(φ3.5x35mm)	2
G11		2	L	(φ6x30mm)	2
G12		1	M		4
GA1		2			
GA2		2			
GA3		2			
GA4		2			

CAUTION: Please confirm the parts list before installtion

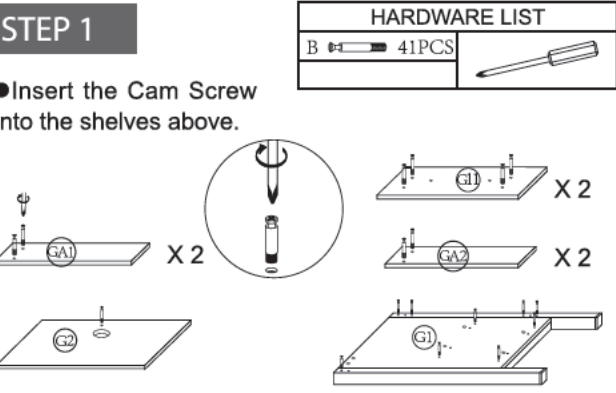
YOU MAY NEED (NOT SUPPLIED)



INSTALLATIONS

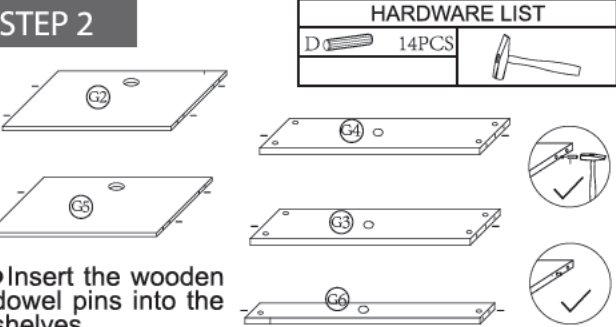
STEP 1

●Insert the Cam Screw into the shelves above.



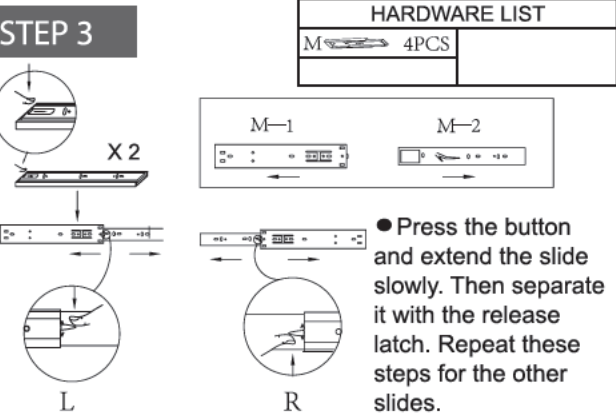
STEP 2

●Insert the wooden dowel pins into the shelves.

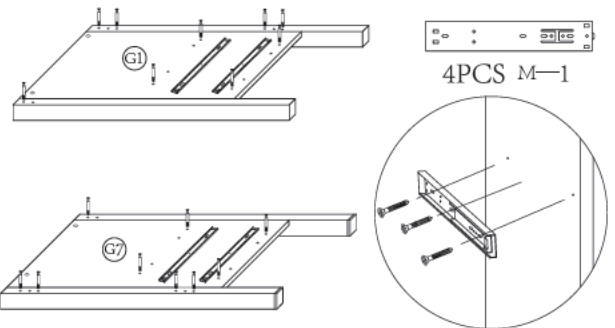


STEP 3

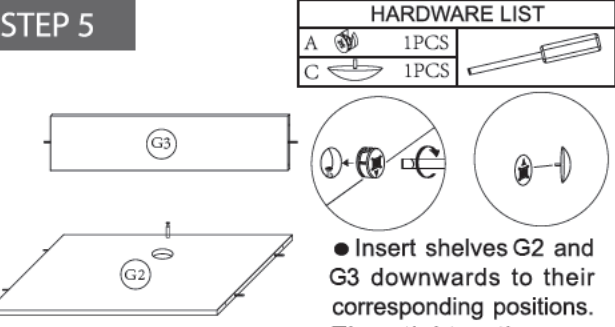
●Press the button and extend the slide slowly. Then separate it with the release latch. Repeat these steps for the other slides.



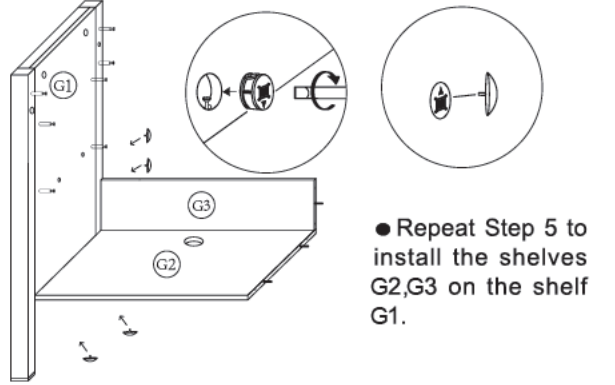
STEP 4



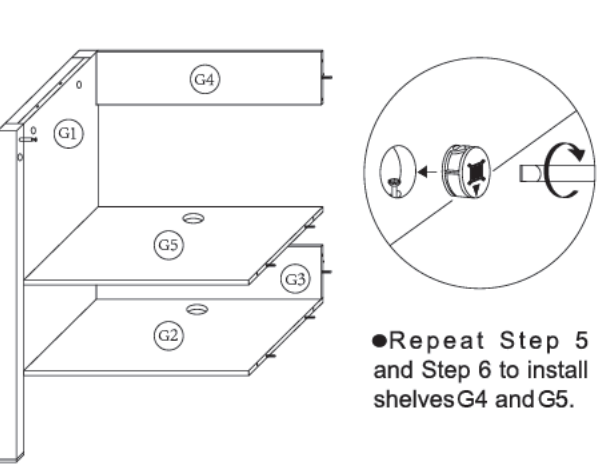
●Insert the screws to connect the slides (N-1) to the shelves.



STEP 6

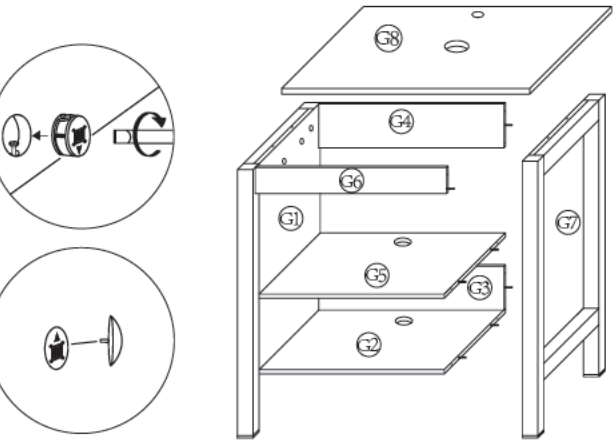


STEP 7



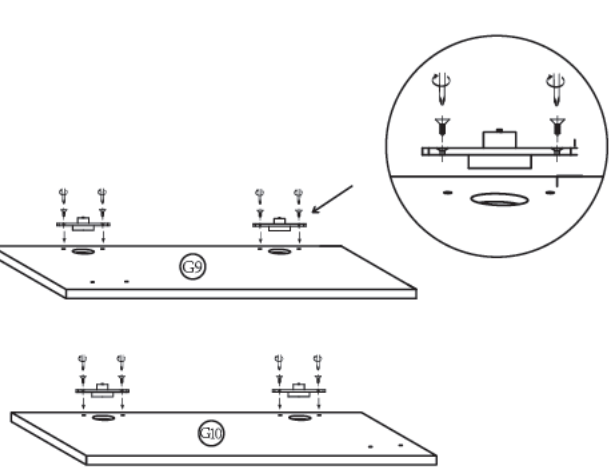
●Repeat Step 5 and Step 6 to install shelvesG4 and G5.

STEP 8



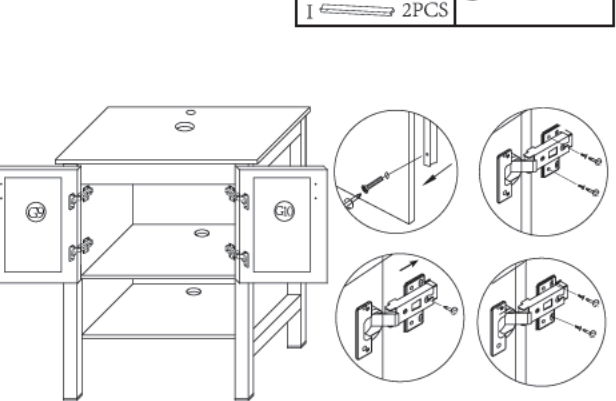
●Install shelvesG6, G7, G8 in order. Then tighten the cam lock with the cover.

STEP 9



●Apply the screws to fix the hinges on the shelves G9 G10.

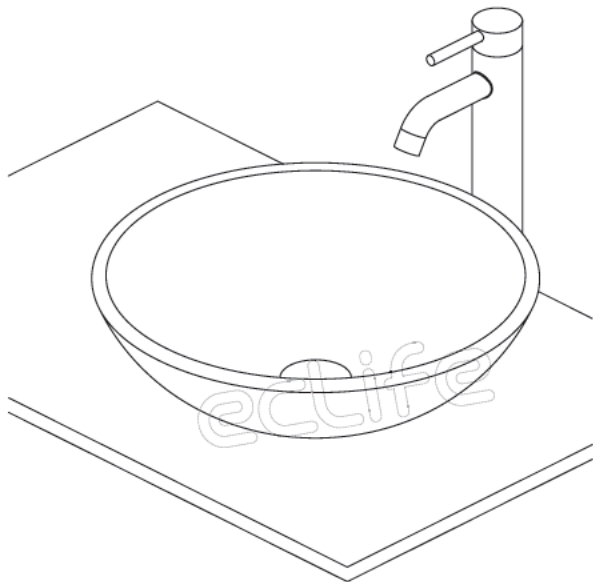
STEP 10



●Use E SCREWS to connect the hinge bracket to the cabinet.
Note: see step 16 to adjust the door's position.

STEP 6

Check the position and stableness of the vessel and faucet. Open the faucet valves, and check for leakage.



CARE AND CLEANING

To keep your vessel looking new, make sure you rinse it out thoroughly after each use. **DO NOT USE ABRASIVES** on this product, as they will scratch and ruin the surface. Stubborn stains, paint, or tar can be removed with turpentine or paint thinner.



Thank you very much for purchasing from us.

We focus on the cost-effective products and good shopping experience for our customers. Your suggestion on our products will be greatly appreciated.

Additionally, we sincerely hope you will be satisfied with our product and leave us positive feedback or review in our page.

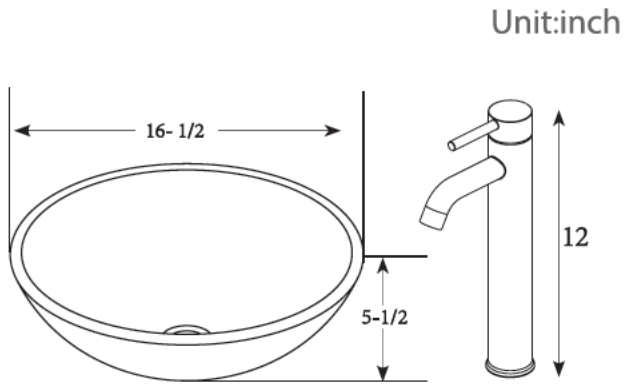
If you have any questions or problems about our product, please contact us at any time so as to clear up your discontent and resolve the problem.

Many thanks and hope you enjoy shopping with us!

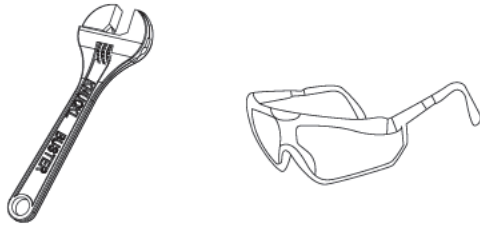
INSTALLATION INSTRUCTIONS








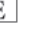



DIMENSIONS



YOU MAY NEED (NOT SUPPLIED)



PARTS LIST

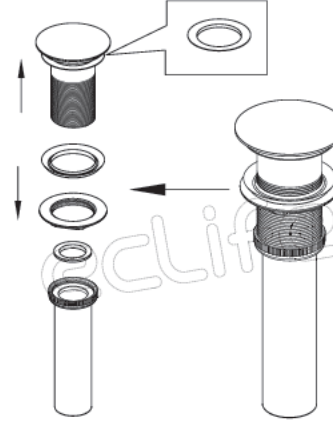
PARTS LIST											
A			C			D					
											
x1			x1			x1					
B		B1		E		F		G		H	
											
x1		x1		x1		x1		x1		x1	

CAUTION: Please confirm the part list before installation

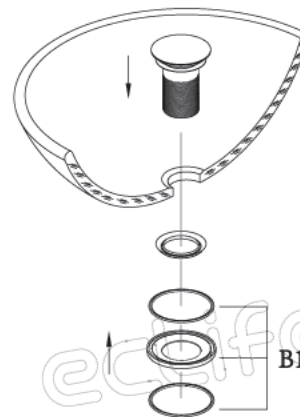
INSTALLATION

STEP1

Take apart the pop up drain and put the thin rubber washer at the top of body.



STEP2

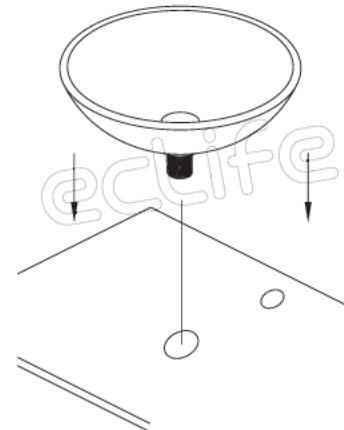


Insert the drain top into the vessel. Install thick rubber washer, 2 O-rings and mounting ring in turn.

Note: Installation sequence of O-rings refer to the illustrations.

STEP3

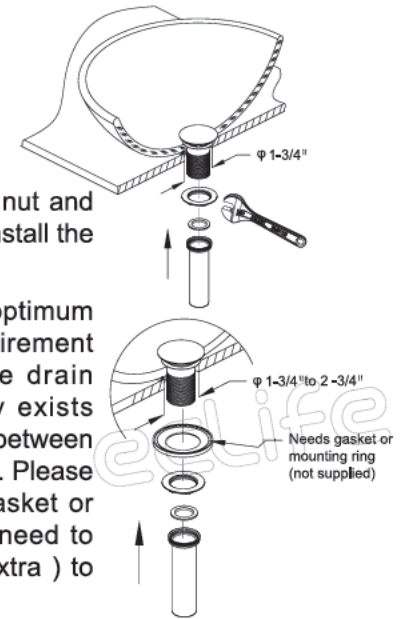
Carefully position the vessel with drain top on the tabletop and adjust the assembly parts in good position.



STEP 4

Install the drain nut and tighten it, then install the tall piece.

Caution: The optimum drain hole requirement is 1-3/4". If the drain hole already exists and the size is between 1-3/4" and 2-3/4". Please use an extra gasket or mounting ring (need to be ordered in extra) to fix it.



STEP 5

Position the gasket under the faucet. Connect the hot and cold water pipes to the faucet. Insert the faucet into the hole. Install the rubber gasket, then the metal gasket, then the fixing bolts. Tighten the fixing bolts

