

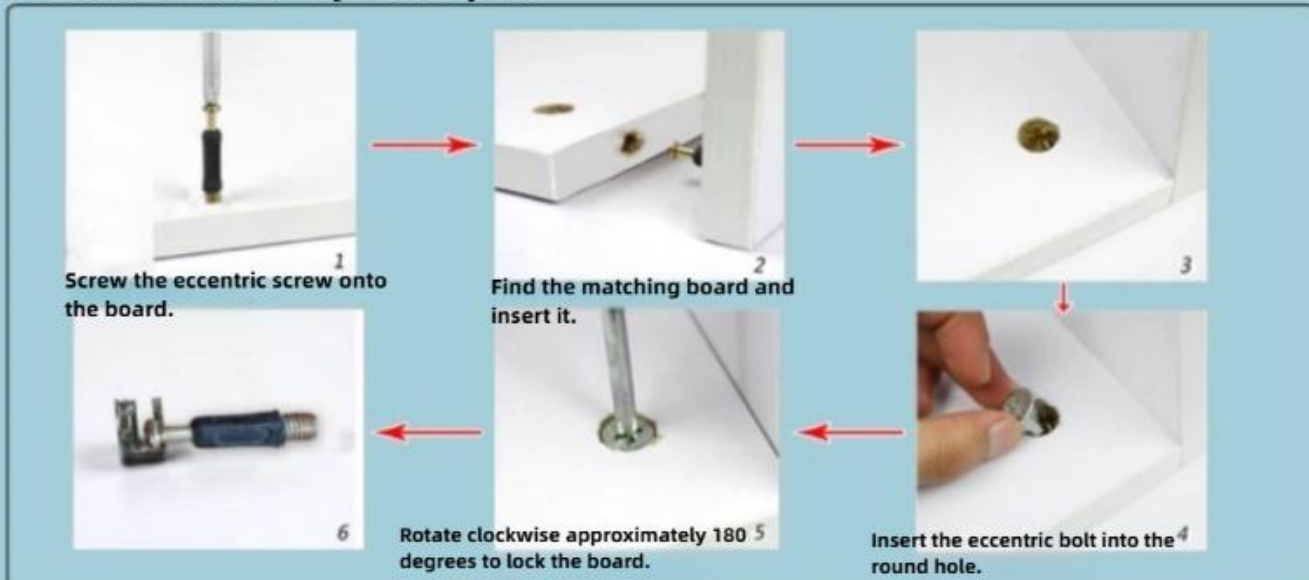
鞋柜 80cm-全郁金香木色 说明书 英

Shoe Cabinet 60/80CM Installation Diagram

								
Eccentric screw	Eccentric bolt	Phillips-head screw	Metal pin	Vent hole	Minimum self-tapping screws	Large-bend hinge	Cork	3 cm Flat-head screws
A*36	B*36	C*22	D*16	E*2	F*24	H*4	I*16	J*8

Friendly reminder: When installing, tighten screws to 70% of full torque. Wait until all components are fully assembled before tightening completely!

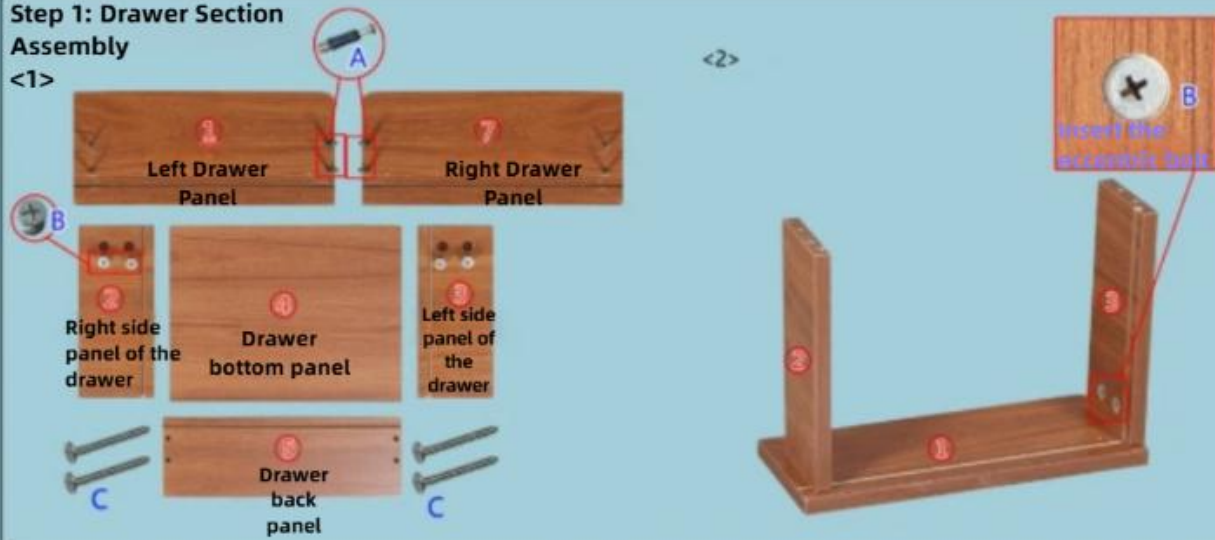
Eccentric Assembly Principle:



Installation steps

Step 1: Drawer Section Assembly

<1>



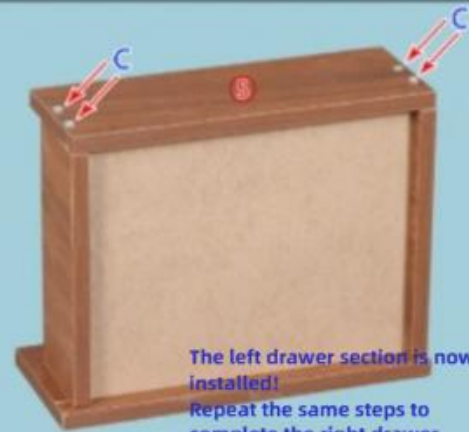
<2>

<3>

First insert the drawer bottom panel, then rotate the eccentric bolt clockwise to lock the panel in place.



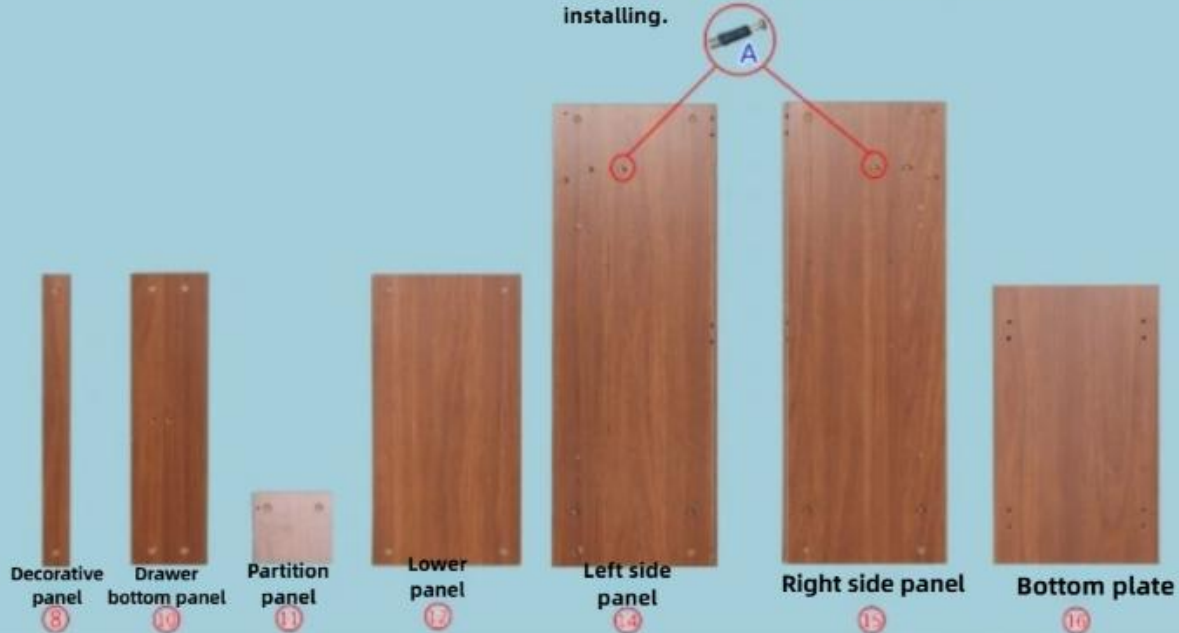
<4>



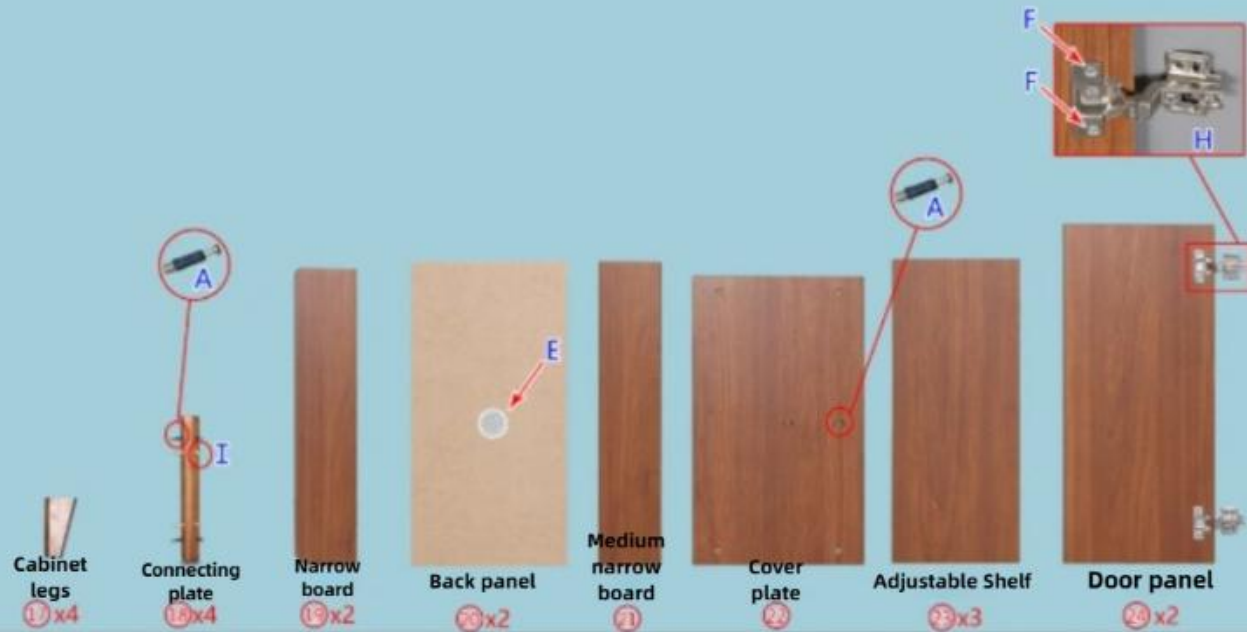
The left drawer section is now installed!
Repeat the same steps to complete the right drawer section!

Board Name and Serial Number:

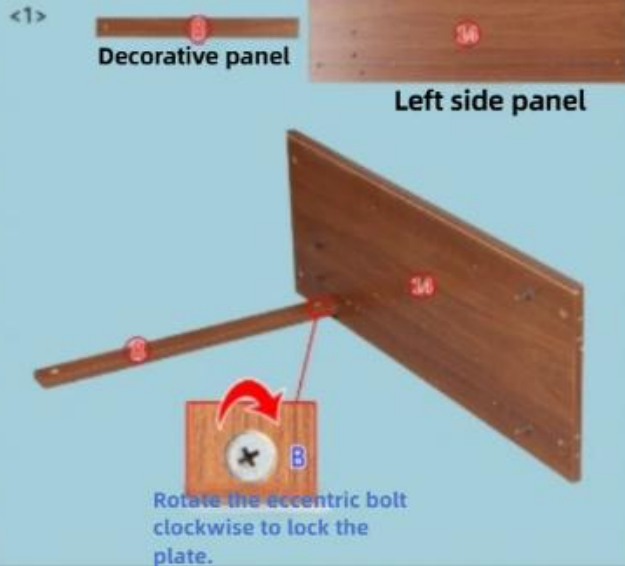
The sequence numbers in the installation diagram are out of order, but this does not mean any panels are missing. Simply follow the sequence numbers when installing.



Install large curved hinges on the door panel



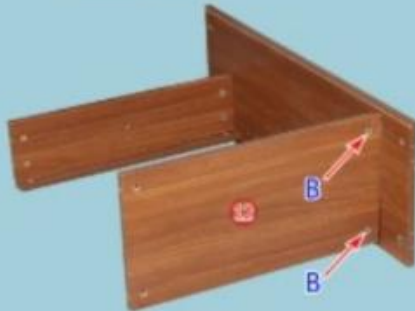
Step 2: Installation of the main section



<3>



Lower panel

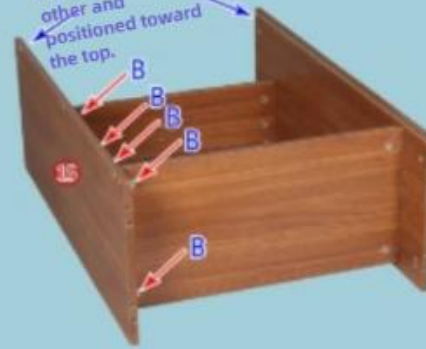


<4>



Right side panel

Slots are arranged in pairs facing each other and positioned toward the top.



<5>

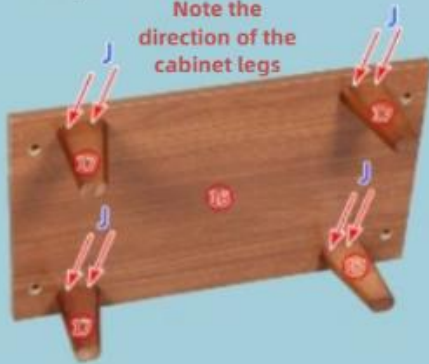


Bottom plate



Cabinet legs (four total)

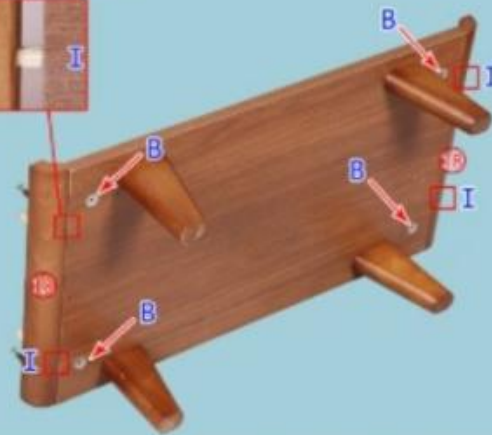
Note the direction of the cabinet legs



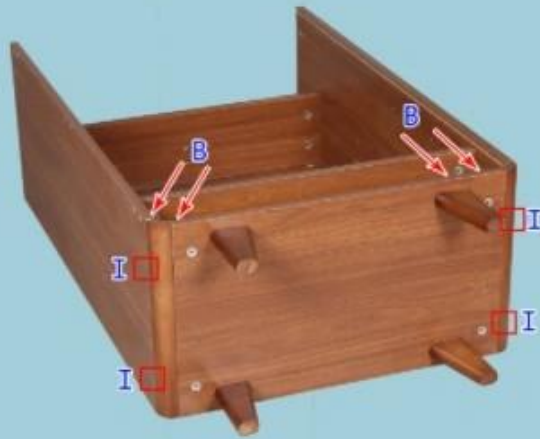
<6>



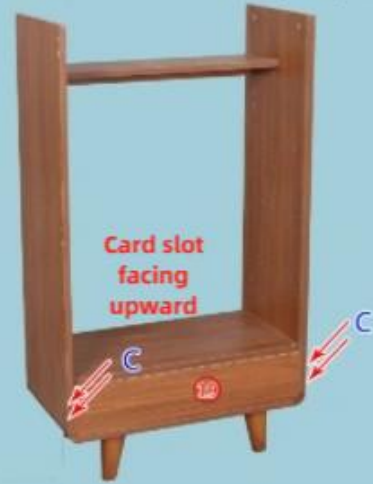
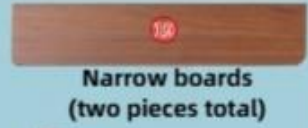
Connecting plates (four in total)



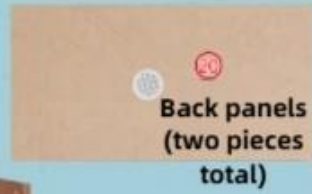
<7>



<8>Align the entire unit properly, with the back facing forward.



<9>



<10>



<11>

Insert the back panel into the slot



Back panel (two pieces in total)

<12>

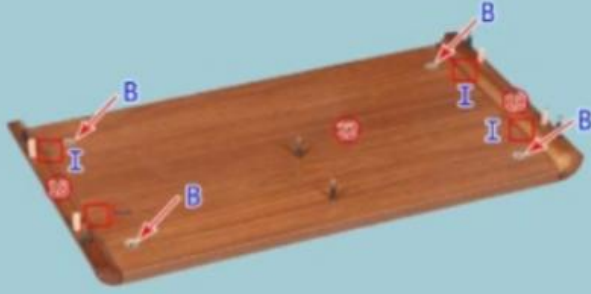
Narrow plates (2 pieces total)



<13>

Cover plate

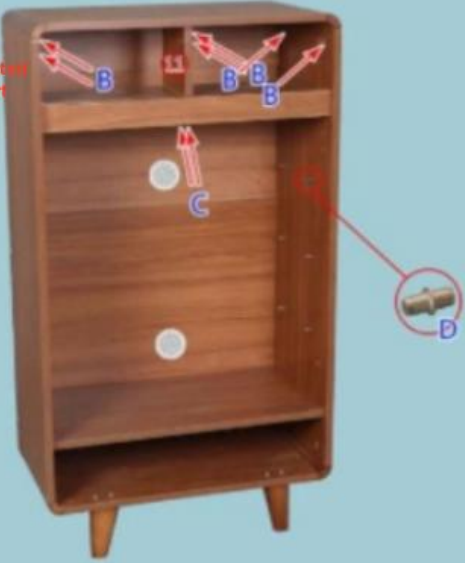
Connecting plates (four in total)



<14>Align the entire unit

The small hole is located at the front upper part

Partition panel



<15>



<16>

If you are unable to install the hinges yourself, please contact customer service for a detailed installation video.



The hinge mounting positions are marked with pinholes on the panel. Secure using the smallest self-tapping screws. First, tighten two screws. After adjusting the panel, then tighten all screws.

<17>Slowly slide it into the drawer.

Method 1: Insert the metal pin after pushing the drawer in.
Method 2: After inserting the metal pin, tilt the drawer 45 degrees and push it in.



Insert metal pins
The function of the metal pins is to prevent the drawer from falling out when pulled.

<18>



Finished picture!