

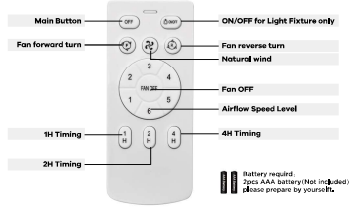
TECHNICAL SPECIFICATIONS

Ceiling Fan Light

Input: AC100V-60Hz

Power: 48W(18+30W)

Size: 32"H10inch



If the remote controller fails to control the fan, please follow the way below to pair codes.
Codes pairing: Turn off the power for 30sec by wall switch, then turn on the power; press 'F2' and 'F1H' at the same time for 3 seconds. Codes pairing is done.

WARNING!
Disconnect power prior to installation. Respectively removed.
Do not touch wires, lights or fan parts directly.
If there is any problem with the fixture, turn power off and do not attempt to repair unless you are a qualified technician.
Do not expose to water or rain.



Expansion pipe



Ceiling Screw



Ceiling Screw



Terminal



Motor



Light Fixture

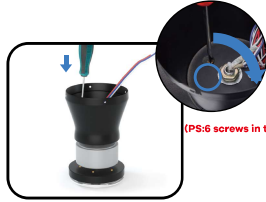


Fan Blades

INSTALLATION GUIDE



1 Unscrew the base and remove the remote control.



2 Unscrew all blade screws.



3 Unscrew all blade screws.



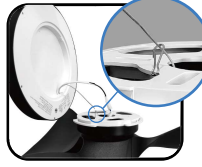
4 Align screw holes and clip all blades.



5 Rotate the lamp plate to position screw hole of each blade in turn and tighten blades with screws.



6 Rotate the controller cover to position 2 screw holes of each blade in turn and tighten blades with screws.



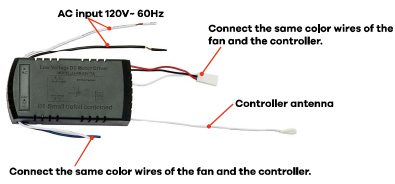
7 Lock the safety rope and connect the wires of the light.



8 Lock the light fixture clockwise to the lamp plate.



9 Connect the controller.



Connect the same color wires of the fan and the controller.



11 Hook the fan by safety string.



12 Connect ground wires, live wires (BLACK) and null wires (WHITE).



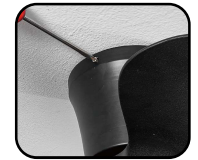
10 Tighten the base.



Notice:
1. Please be sure the ceiling is thick enough to drive the screws.
2. The whole fan weighs 7lb, please be sure the ceiling can shoulder freely.
3. Please make sure that the installation base is stable and will not shake after installation.



13 Hook the fan to the ceiling.



14 Tighten the fan, installation is done.