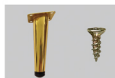
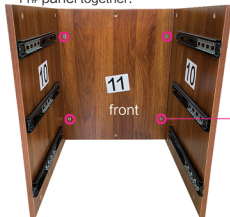




Step. 17

X4
Install the 10# board and the 11# panel together.



Step. 18

X4 X16

Install the four metal legs onto the 12# board using screws.



Step. 19

X5
Screw the cam bolt into the plastic expansion nut



Step. 20 Assemble the cabinet.

X5

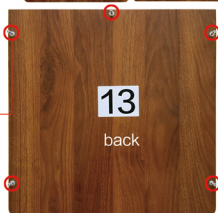
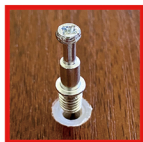


Step. 21

X9



Screw the cam bolt into the plastic expansion nut





Step. 22

Install the 13# panel

X5



Step. 23

X1

Install the 7# drawer



X2

Step. 24

Install the remaining two 7# drawers into the cabinet using the method from the previous step.



Part 4: vanity table parts



Step. 25

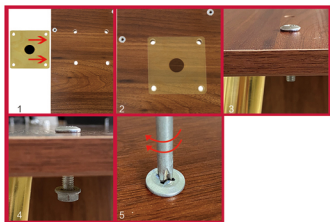
X8

X8

X2



Install the two long legs onto the 14# panel





Step. 26

X9

Screw the cam bolt into the plastic expansion nut



Step. 27

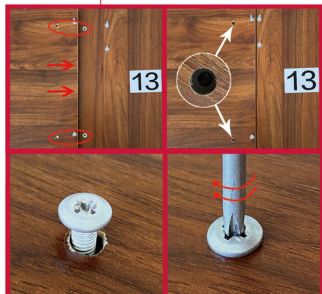
X2

Secure the 14# board onto the 13# panel



Step. 28

Install 15# panel



X2

X4

Step. 29



Short (front)

Long (back)

16



X2

Install the slide rails onto the two 16# panels using screws.

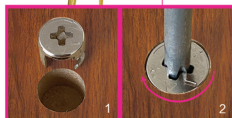




Step. 30

Install the two 16# panels

X4



Step. 32

Install 17# panel

X2



Step. 31

X2

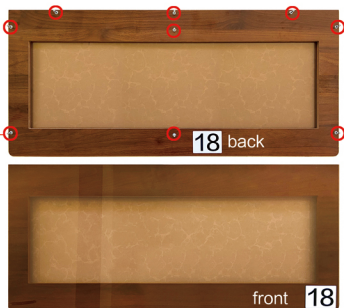
X4

Install the slide rails onto the front and back of the 17# panel using screws.



Step. 33

X9
Screw the cam bolt into the plastic expansion nut

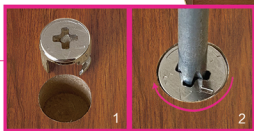




Step. 34

X6

Install 18# panel



Step. 35 Install Drawer 1#



Step. 36

X2

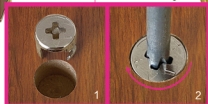
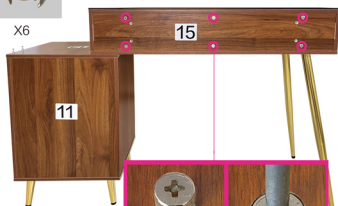
Following the installation steps of the previous drawer, install drawer 6# on the left side of the vanity table.



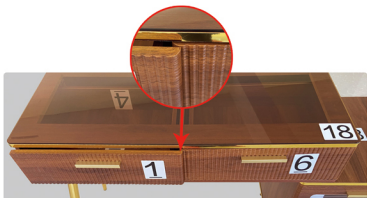
Step. 37



X6



When the two drawers installed on your dressing table are in this situation,



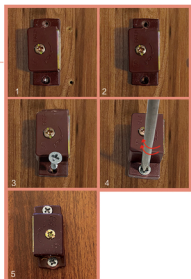
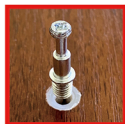
You need to exchange the installation positions of the two drawers.

Part 5 : storage shelf



Step.38

Install the hardware on Panel 19#.



Step. 39

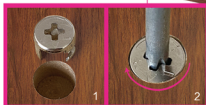
Screw the cam bolt into the plastic expansion nut



Step. 40

Connect Panel 19# and 20# together

X2



Step. 41

Install the 21# plate
Note: Installation direction of 21# plate

X2

