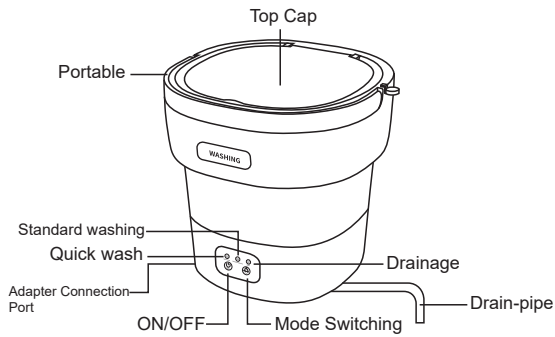
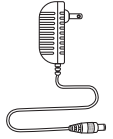


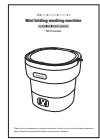
Introduction



Parts List



AdapterX1



Operation Instructionsx1

1. Functional position indication:

The functions of the three indicator lights are divided into:

Quick wash: 5 minutes; Indicator light

Standard washing: 10 minutes; Indicator light

Drainage: 5 minutes; Indicator light

After turning on, press the mode switch button to switch between cleaning modes in sequence.

2. When connecting and using the product, pay attention to using the corresponding power adapter within the range to avoid excessive current affecting the product's lifespan and safety accidents.

-01-



WARN

- ❗ Do not allow children to use or keep out of reach of children.
- ❗ Please add water to the cleaning tank before use.
- ❗ Do not put flammable liquids in.
- ❗ Do not clean the power connection.
- ❗ Please do not place in damp or potentially rainy areas such as the bathroom.
- ❗ Do not touch the power connection with metal objects.
- ❗ Do not disassemble, repair, or modify this product.

2 Precautions For Use



Notice

- ❗ Do not directly fill water under the faucet.
- ❗ --Immersion of the host and power switch in water can cause malfunctions.
- ❗ Do not clean products with lower surface hardness such as pearls (with a Mohs hardness of less than 8).
- ❗ --It can cause damage, discoloration, or loss of luster.
- ❗ Do not add acidic solvents to the cleaning water
- ❗ -- Will corrode the internal rubber components of the washing machine
- ❗ Please do not shake strongly to prevent the main unit from falling.
- ❗ --Causing damage, deformation, or malfunction.

-02-

Scope Of Product Application

Cleanable Products	Type	Specific Examples
	Fabric Material	Children's clothing, underwear, underwear, socks...

Non-washable Items	Type	Specific Examples
	Wooden Class	1. Turtle shell frame, Pearls
	Gemstones with relatively soft surface hardness	Ancient Turkish stones, Opal, Emerald, Coral, Ivory, Emeralds, Stone, etc
	Products with inferior coating and coating processing	2. Contact lenses
	Jadhesive Gemstones	3. Lacquer ware
Items With Scratches And Cracks	.	

Troubleshooting

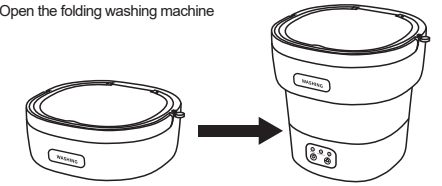
Specific symptoms	Phenomenon	Method of exclusion
Can not boot properly	The operation indicator lights up normally.	Please contact our customer service staff at 17802061101.
	The Operation Indicator Light is not on.	1. Check that the adapter plug or host plug is in good contact. 2. If the problem is not resolved, please consult customer service.

Guide to common trouble shooting

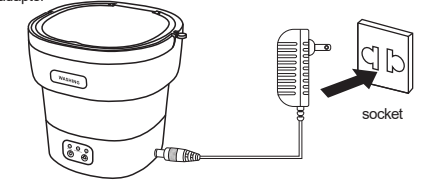
-03-

Instructions For Use

1. Open the folding washing machine



2. Use of adapter



3. Please press the power switch to turn on the device.



4. Please open the top cover and take out the cleaned items.



After turning on, press the mode switch button to switch between cleaning modes in sequence.

*After each cleaning, please pour out the water inside the machine, even if it has only been used once

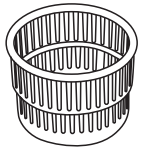
-04-

Drainage instructions

1. Open the lid



2. Put it into the drainage basket



*Align and insert the washing machine card slot

3. Switch to drainage mode



Extend the bottom drainage pipe to a location where dirty water can be drained

Product Specifications

Product Name: Folding Mini Washing Machine

Product model: S810

Product material: PP+TPR+ABS

Rated voltage: 110-230V

Unfolded size: 302X302X315mm

Folding size: 302X302X130mm

Drain basket size: 180X180X125mm

Executive standard: GB4706.1-2005

Includes: Folding mini washing machine body, adapter, user manual

***Product specifications, appearance, design, and other product improvements are subject to change without prior notice.**

-05-

Routine maintenance

1. Pour half of the standard line of water into the cleaning tank using a measuring cup. After cleaning with a soft sponge, rinse with clean water. (Figure 1)

*When the stains are severe, 1-2 drops of neutral detergent can be added for better cleaning effect.

*Do not use a sponge with a harder surface for cleaning, as it may cause scratches in the cleaning tank.

2. After cleaning, please rinse again with clean water.

*When using neutral detergent, please rinse off any remaining detergent thoroughly.

*Be careful not to let water seep into the power connection during cleaning.

Methods for cleaning the host

1. When the stains are stubborn, wet a cloth with water and wipe it off. Please be careful not to allow water to seep into the switch and power connection.

2. After wiping, dry with a dry cloth.

Declaration Of Toxic And Harmful Substances in Electronic Information Products

Parts Name	Hazardous substances					
	Lead (Pb)	Mercury (Hg)	Cadmium (Cd)	Hazardous Chromium (Cr (VI))	Duo Australian Biphenyl (PBB)	Duo Ao Di Benzene (PBDE)
Housing	○	○	○	○	○	○
Circuit Board	○	○	○	○	○	○
Annex	○	○	○	○	○	○

This table is prepared in accordance with the provisions of SJ/T11364
 O: Indicates that the content of the toxic and harmful substance in all homogeneous materials of the component is below the limit requirements specified in GB/T26572.
 X: Indicates that the content of the toxic and harmful substance in at least one homogeneous material of the component exceeds the limit requirements specified in GB/T26572.



Figure 1: Please be careful not to let water seep into the power connection at the bottom of the cleaning tank



Figure 2: Directly drain the dirty water after cleaning

-06-

After sales warranty card

The warranty for the entire machine is one year from the date of purchase.

Warranty service

1. In order to protect your rights, please keep the warranty card safe after purchasing this product. The warranty card is an important basis for warranty

2. During the warranty period, if there are any product quality issues resulting in malfunctions, please call our customer service hotline at 17802061101. Our service personnel will provide you with the best solution as soon as possible. If the malfunction you encounter falls outside the scope of the free warranty or the product has exceeded the warranty period, you can choose to pay for maintenance

3. Repair service. For details, please contact our customer service personnel. After receiving the machine for maintenance, we will provide you with corresponding repairs according to the situation.

Not covered by warranty

- The product has exceeded the warranty period or warranty period;
- Unauthorized use of this product for commercial purposes for profit;
- Failure to use, maintain, and upkeep according to the requirements of the product manual, or damage caused by the use of non original parts
- Unauthorized repairs, modifications, or human induced collisions, falls, and squeezing of the machine;
- Tearing or altering, causing the product label, seal, serial number, etc. to be unrecognizable;
- Consumable products are not covered by the product warranty;
- Malfunctions caused by exceeding the specified conditions or environment for use;
- Malfunctions or damages caused by force majeure factors (including but not limited to natural disasters, government actions, social abnormal events);

After sales warranty card

Warranty Certificate: Original seller

User Name: gentleman lady Contact phone number: _____

Address: _____

Product model: _____ Product model: _____

Purchase date: _____ Invoice number: _____

(Seller's seal)

Warranty Certificate: Copy user:

User Name: gentleman lady Contact phone number: _____

Address: _____

Product model: _____ Product model: _____

Purchase date: _____ Invoice number: _____

(Seller's seal)



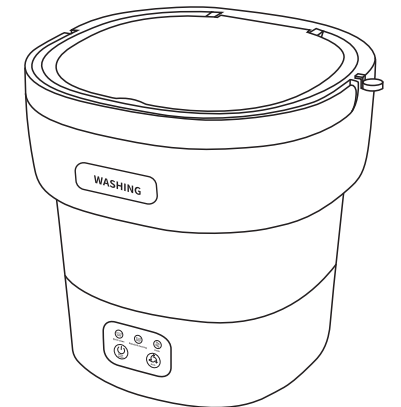
-07-

MINI FOLDING WASHING MACHINE

Mini folding washing machine

GUARDING "INNER" HEALTH

S810 manual



*Thank you for purchasing our company's products. In order for you to have a better experience, please read this content carefully before use and store it properly.