

PRODUCT INSTALLATION INSTRUCTIONS



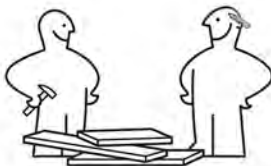
Before installing the product,
please read the product installation instructions carefully



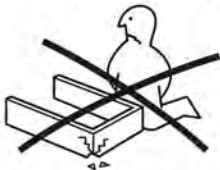
Tools Required:



Installation by two people



To avoid furniture damage, please assemble on a soft-padded surface.



Contact us if you encounter any issues





If you have any questions, please feel free to contact us, and we will promptly assist you!

Suggestion: please read the installation drawing carefully before installing the product

					
X80	X80	X20	X20	X68	X1
					
X18	X8	X1	X11	X5	X4
					
X2	X1	X10	X4	X10	X1
					
X1	X2				

Note: accessories have surplus is normal phenomenon

How to use round fasteners and silver connectors



Part 1: 1# and 6# drawer



Step. 01

X4

Screw the cam bolt into the plastic expansion nut



Note:

Do not overtighten the cam screws or screw them in too shallowly to avoid damaging the threads in the holes or failing to connect properly.



Step. 02

Install the 3# panel



Step. 03

X2



X1

First, insert Panel 5# into the groove, and then secure it with the cam lock nut



Step. 04

X2

Install the 2# panel

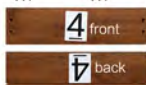




Step. 05

Install the 4# panel

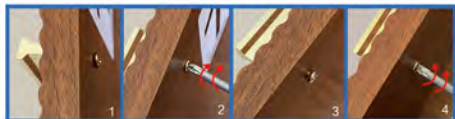
X4 X4



Step. 06

Install the knob

X1 X2



Part 2: 7# drawers



X3



Step. 07

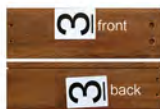
Screw the cam bolt into the plastic expansion nut

X4



Step. 08

Install the 3# panel





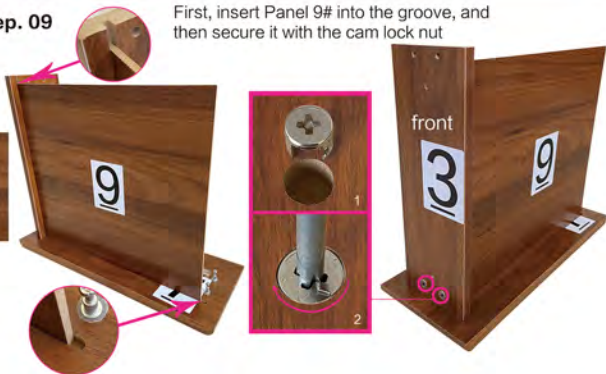
Step. 09

First, insert Panel 9# into the groove, and then secure it with the cam lock nut

X2



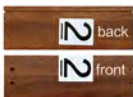
X1



Step. 10

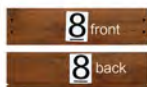
X2

Install the 2# panel



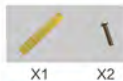
X4

X4



Step. 11 Install the 8# panel





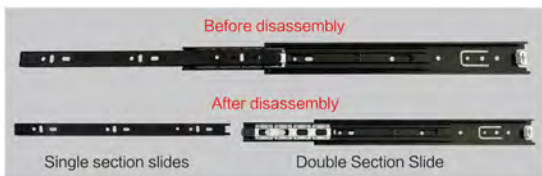
Step. 12

Install the knobs



X10

Step. 13 You need to disassemble the slide rail before installation



X10

X20

Step. 14

Use screws to separately install the single -section slide rail on panels 2# and 3#



Step. 15 All drawers installed!



X1



X1



X1



X2

Part 3:
storage cabinet



Double Section Slide

X4

X6

X12

Install the slide rail onto the 10# panel using screws,
Screw the cam bolt into the plastic expansion nut

Step. 16

