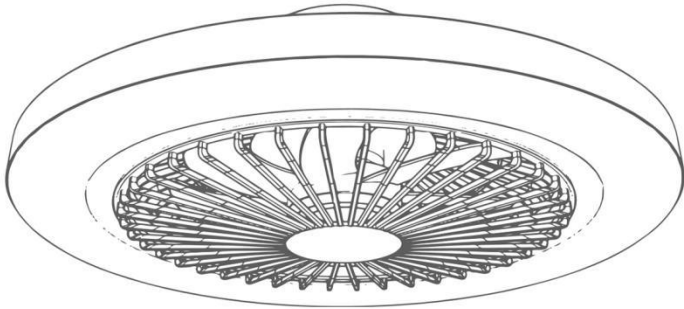
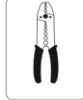


CEILING FAN WITH LIGHT

USER MANUAL

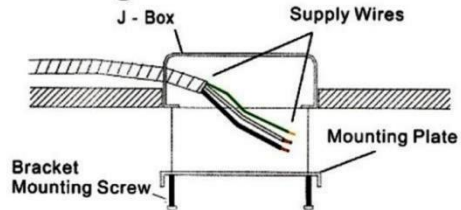
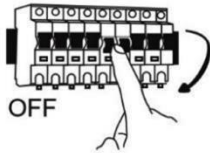


Tools Needed

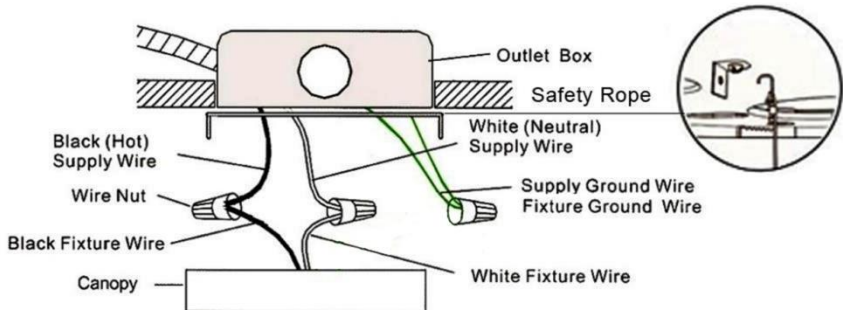


Installation

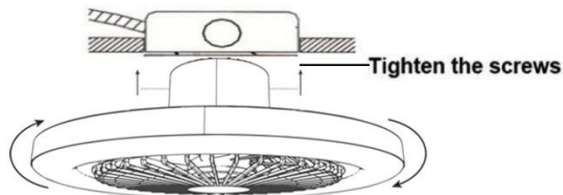
1.Installing the Mounting Plate




2.Wire Connections

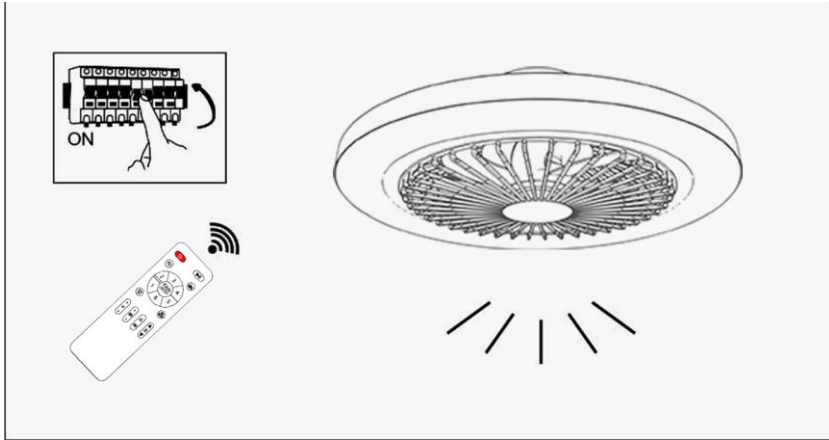


3.Tighten the Screws



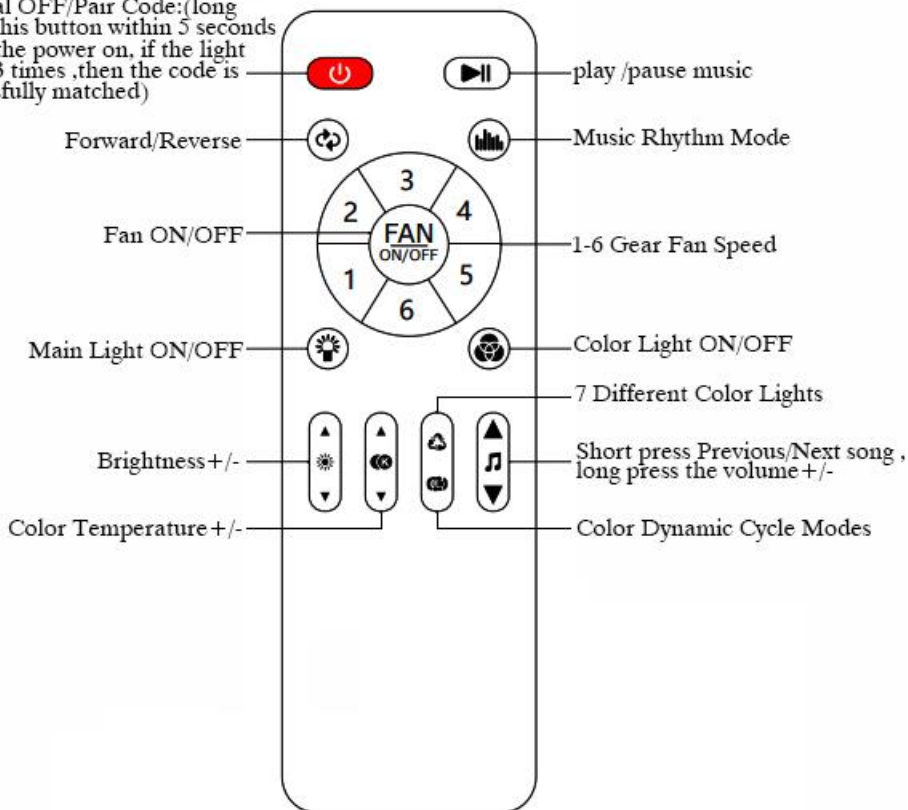
4: Switch on and Pair Cord with Remote

Remote Code Matching: Long Press the "  " button within 5 seconds when the light is turned on. If light flicks, then the code is successfully matched.



5: Remote Control Operation

General OFF/Pair Code:(long press this button within 5 seconds when the power on, if the light flicks 3 times ,then the code is successfully matched)



Battery Information:2 pcs AAA batteries needed
If not used for a long time, remove the battery

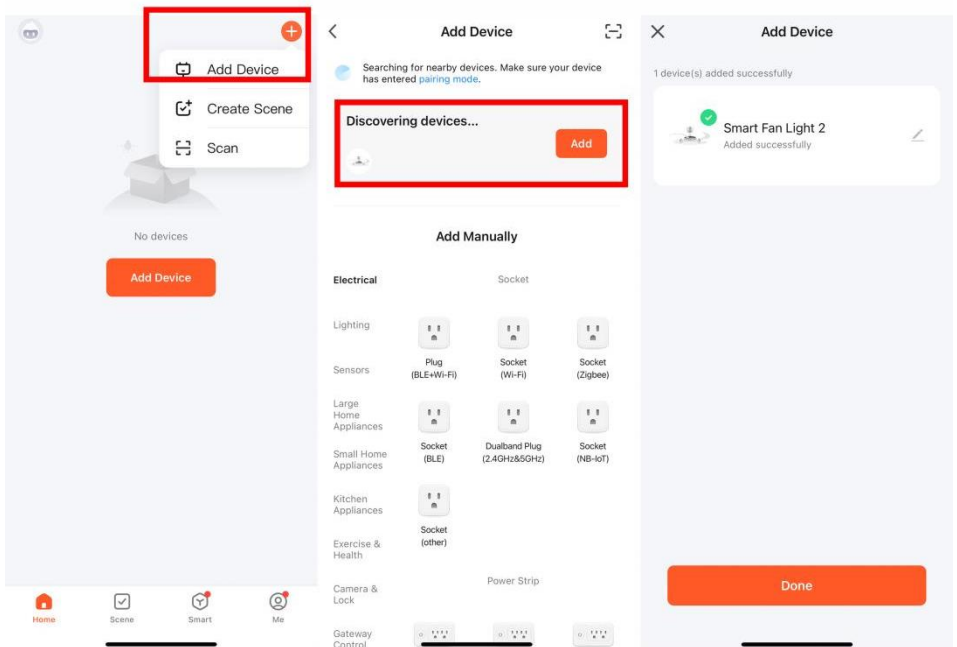
6: App Control Operation

1:Open your phone bluetooth

2: **Pair Code** :Continuous ON-OFF-ON-OFF-ON Power on and off three times (power on for 2~3 seconds, power off for 5~10 seconds) to make the device enter the distribution network mode, and the main light will flash several times.

3: After the light fixture stops flashing , click Add Device in the upper right corner

4: wait for the App to automatically search for peripheral devices;



PIC1: Fan Control Interface

PIC2: Bluetooth Music Control Interface

PIC3:Light Control Interface



7: Trouble Shooting

Fan does not work:

1. Check all fuses or circuit breakers if disconnecting the power supply to the fan.
2. Turn off electrical power and check all wire connections to fan and in switch housing. It must be carried out by an electrician.

3. Please press and hold the " "buttons at the same time within 5 seconds after the product is powered on, until light flicks to succeed.

If it does not work. Please try again.

4. If the app stop work, please Pair Code : Continuous ON-OFF-ON-OFF-ON Power on and off three times (power on for 2~3 seconds, power off for 5~10 seconds) to make the device enter the distribution network mode, and the main light will flash several times.

Fan is noisy:

1. If there is resonance noise, please tighten the screws at the connection between the hanging plate and the lamp body

Fan turns but the airflow is inadequate:

1. The fan may be running in reverse, so air is going upward.
2. The room may contain items that obstruct the air flow.
3. The fan may be too small for size of the room

8 SAFETY TIPS

WARNING : 1.To avoid possible electric shock,turn off the electricity at the main fuse box or circuit panel before you begin the fan installation or before servicing the fan or installing accessories.

WARNING : 2.The outlet box and ceiling support joist used must be securely mounted, and capable of supporting at least 100 pounds (45.4kg).To reduce the risk of fire,electric shock or personal injury, mount to the outlet box marked acceptable for fan supported and use mounting screws provided.The box must be supported directly by the building structure.Most outlet boxes commonly used for the support of lighting fixtures are not acceptable for fan support and may need to be replaced. Consult a qualified electrician if in doubt.

WARNING : 3.To reduce the risk of electrical shock and fire, do not use this fan with any solid-state fan speed control device,or rheostat.

WARNING : 4.To reduce the risk of personal injury,do not bend the blade brackets (also referred to as "flanges") during assembly or after installation.Do not insert objects in the path of the blades.

WARNING : 5.This product is not intended for use by persons (including children) with reduced physical, sensory or mental capabilities are different or are impaired, or lack of experience or knowledge, unless such persons are supervised or trained to operate the appliance by a person responsible for their safety.

CAUTIONS :1.Read all instructions and safety information carefully before installing your fan and save these instructions.

2.Make sure all electrical connections comply with local codes or ordinances and the National Electrical Code. If you are unfamiliar with electric wiring, please use a qualified and licensed electrician.

NOTE: The important safety precautions and instructions appearing in the manual are not meant to cover all possible conditions and situations that may occur.It must be understood that common sense and caution are necessary factors in the installation and operation of this fan.