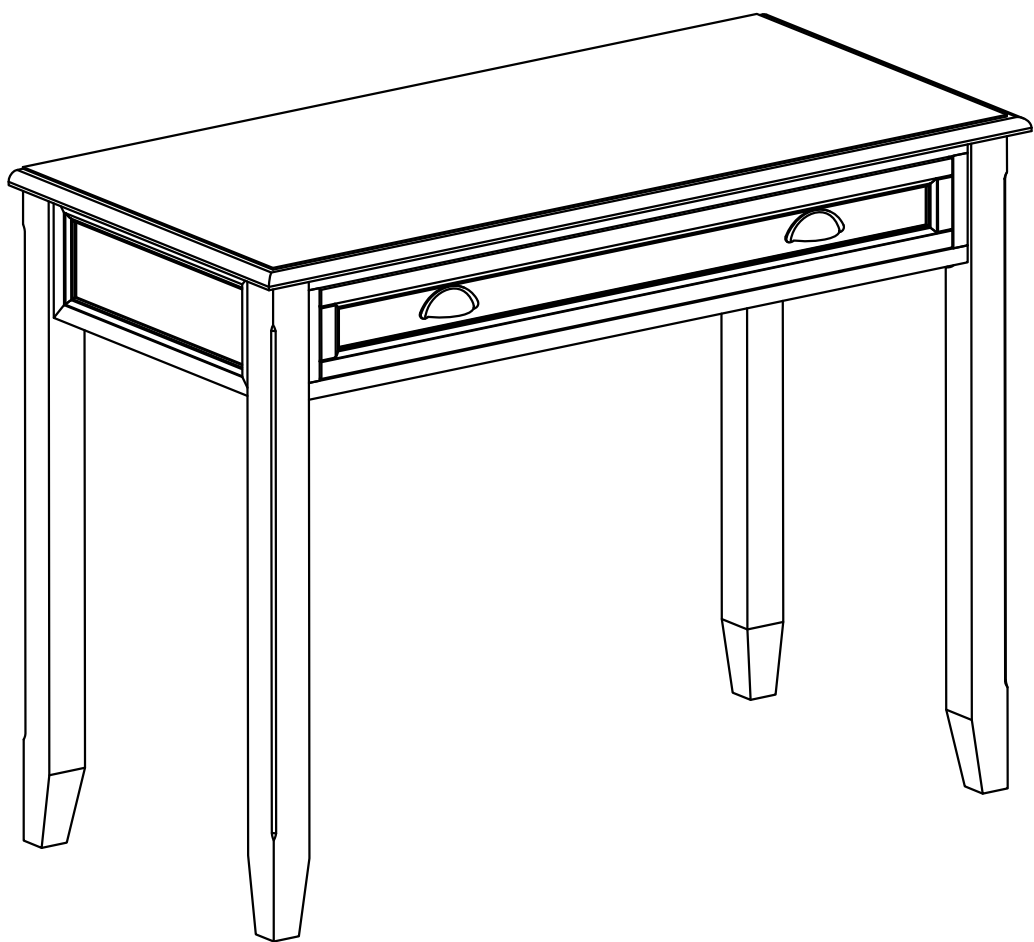


DESK





DO NOT RETURN

**FOR REPLACEMENT PARTS OR OTHER INQUIRIES
PLEASE CONTACT US**

**PLEASE ENSURE TO HAVE THE MODEL #
FROM THE PACKAGING OR
INSTRUCTION BOOKLET**

IMPORTANT : Please read this manual carefully before beginning assembly of this product. Keep this manual for future reference.

SAFETY INFORMATION

Identify all the parts and hardware. Do not discard of the packaging until you have checked that you have all of the parts and hardware required.
Hardware package may have spare parts.

WARNING: This item contains small parts which can be swallowed by children and pets. Keep children and pets away during assembly. To avoid danger of suffocation, always keep plastic bags away from children and pets. We recommend that you assemble this unit on a carpeted floor to avoid scratches. If using power tools, set the tool to low torque to avoid damage.

May require 2 people for ease of assembly.

CARE and MAINTENANCE

To clean, use a soft or slightly damp cloth, then wipe with a clean, dry cloth.
Dust with soft dry cloth.

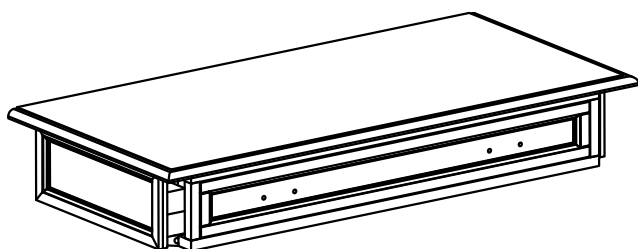
Do not use ammonia-based cleaning products, as they will damage the finish.
Do not leave liquids or damp cloths on this furniture.

To avoid dulling of the finish, do not place furniture in direct sunlight.
Please inspect and tighten all screws or bolts on a regular basis to ensure proper performance and safety of your item.

PRE-ASSEMBLY INFORMATION

PART DESCRIPTION

A



TOP
QTY 1

B

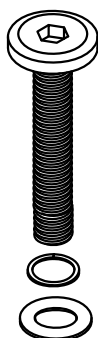


LEG
QTY 4

PRE-ASSEMBLY INFORMATION

HARDWARE DESCRIPTION

1



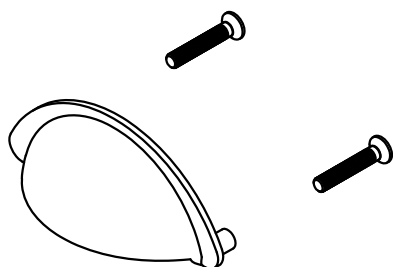
BOLTS AND WASHERS
M6 x 80 mm
QTY 8 SETS

2

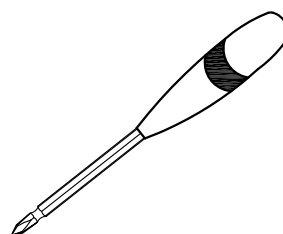


ALLEN KEY
QTY 1

3



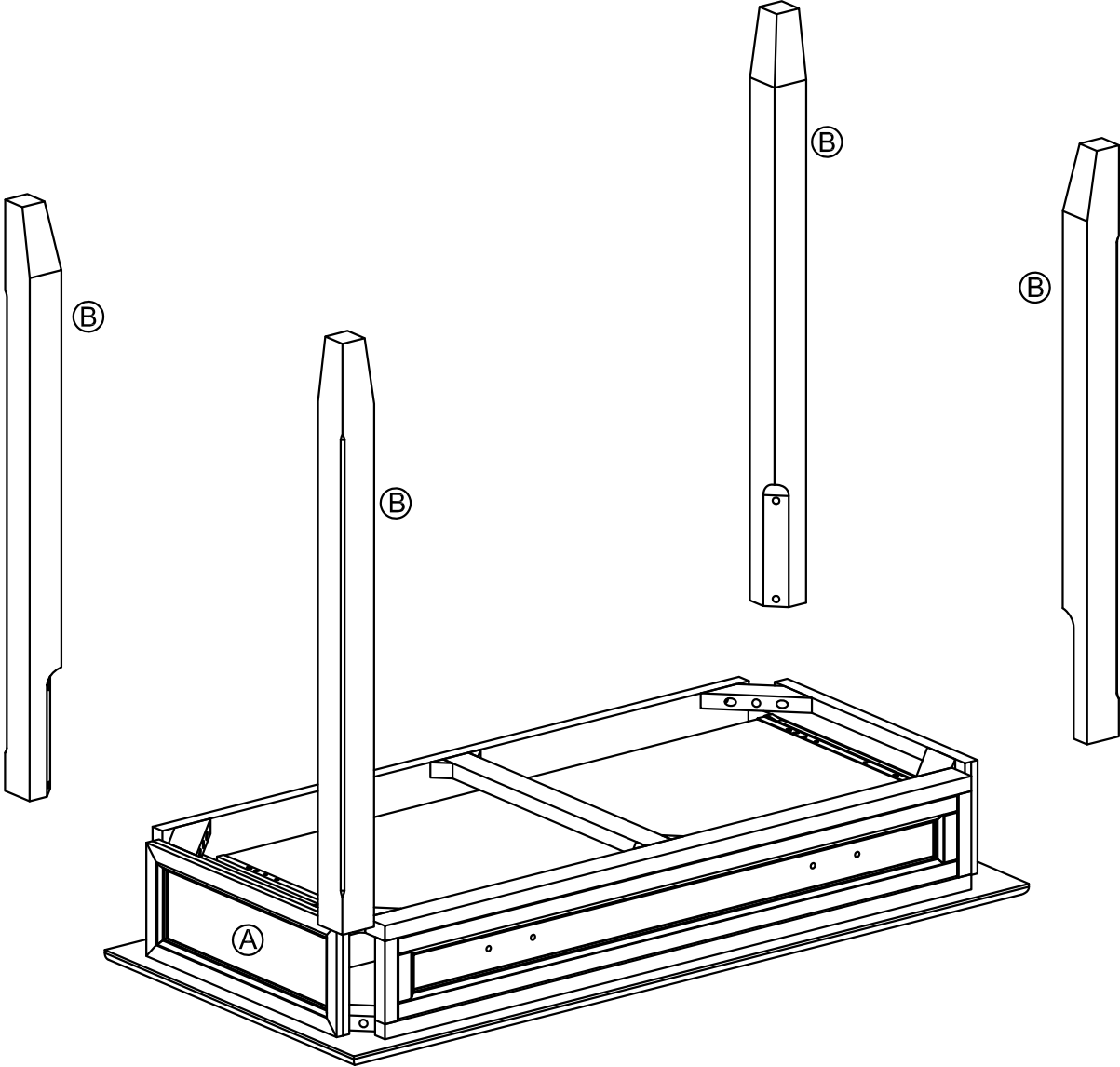
HANDLE
QTY 3 SETS



Required -
Phillips screwdriver
Not Included

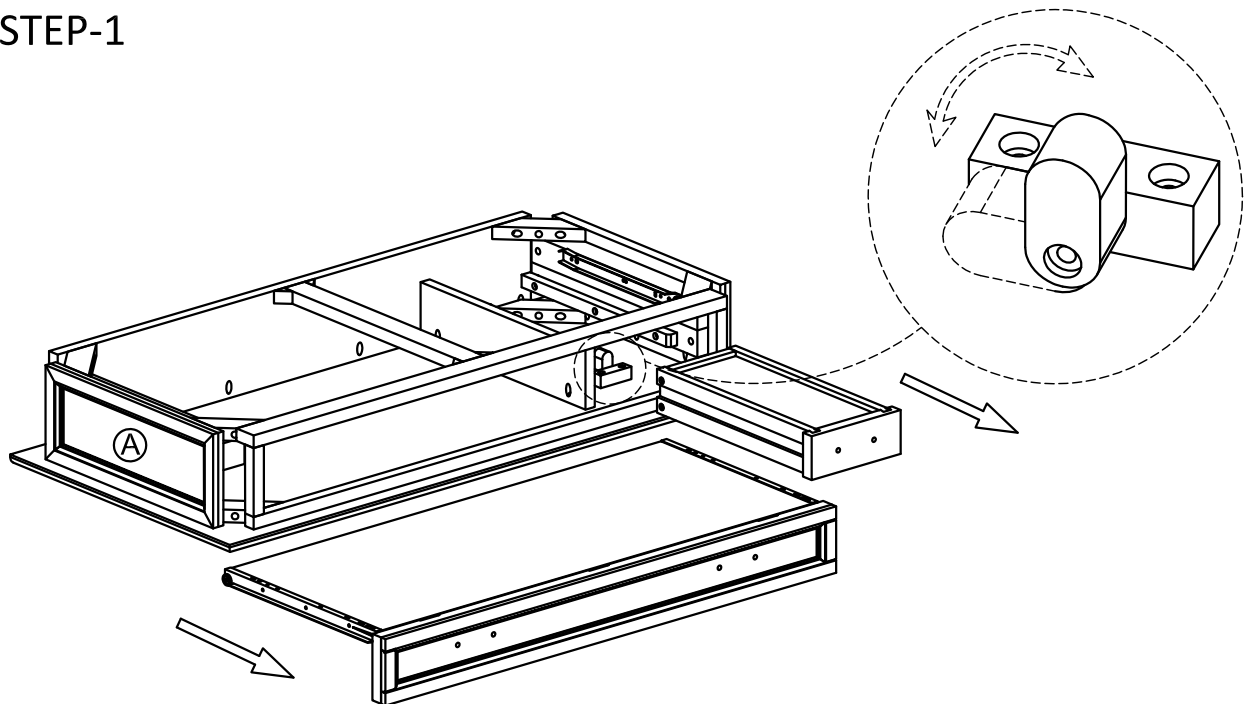
NEED HELP? For help with assembly or if you are missing a part, please call customer service

COMPONENTS-KEY DIAGRAM



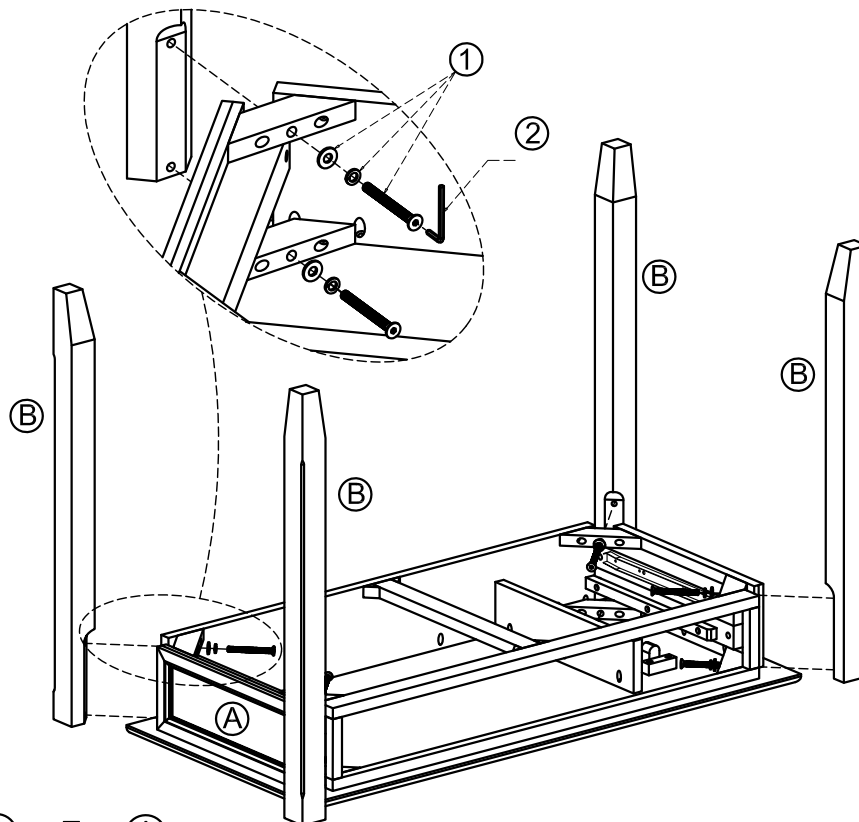
ASSEMBLY

STEP-1



1. Ensure the Wood Lock (attached on the Top) is parallel to the frame.
2. Remove Drawer and Keyboard Shelf from to compartment.

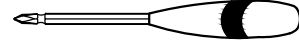
STEP-2



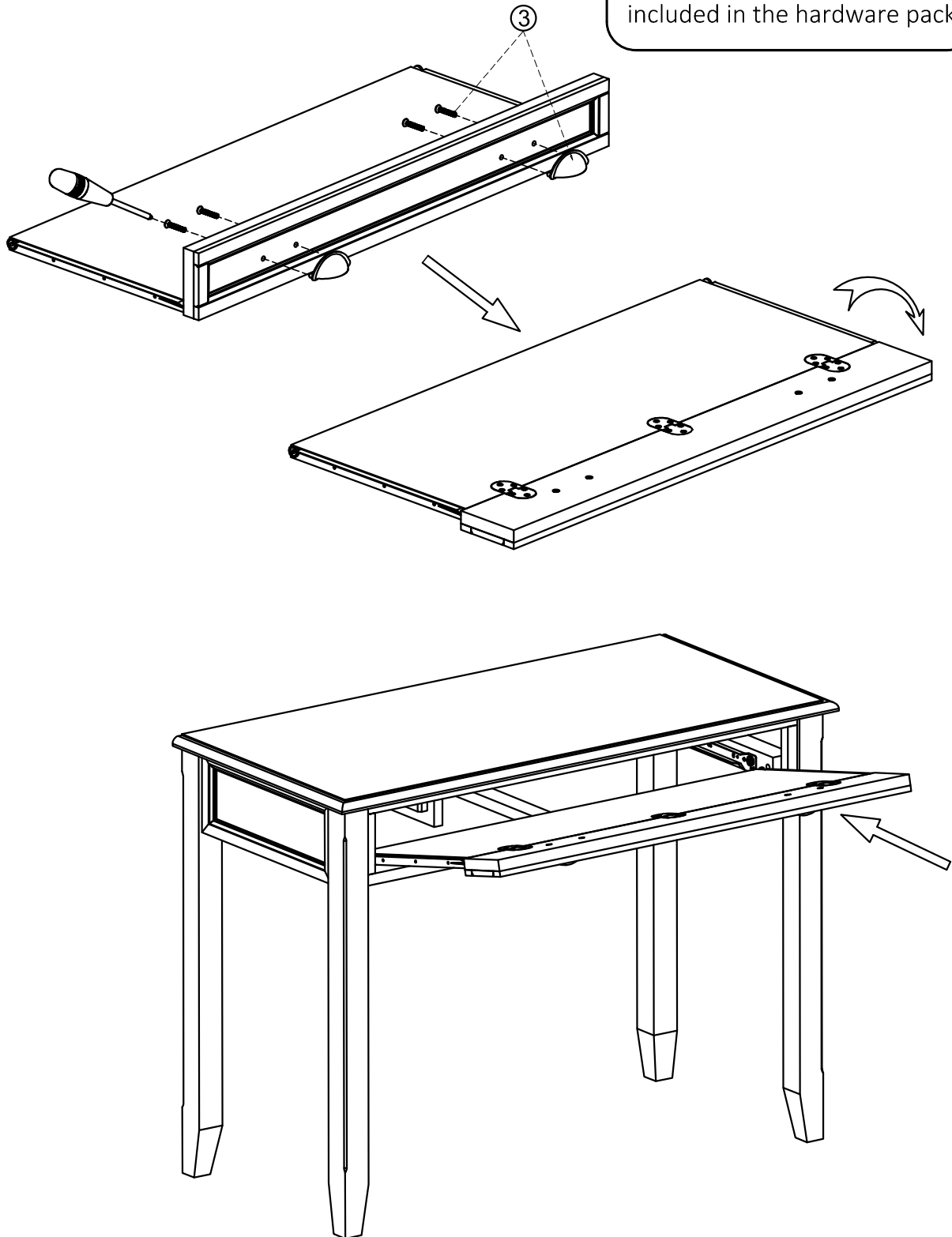
1. Attach Legs (B) to Top (A).
2. Use 8 sets Bolts and Washers (1) to secure part (A) and (B) (2 sets on each Leg).
3. Use Allen Key (2) to tighten Allen Key Bolts. Do not over-tighten.

ASSEMBLY

STEP-3



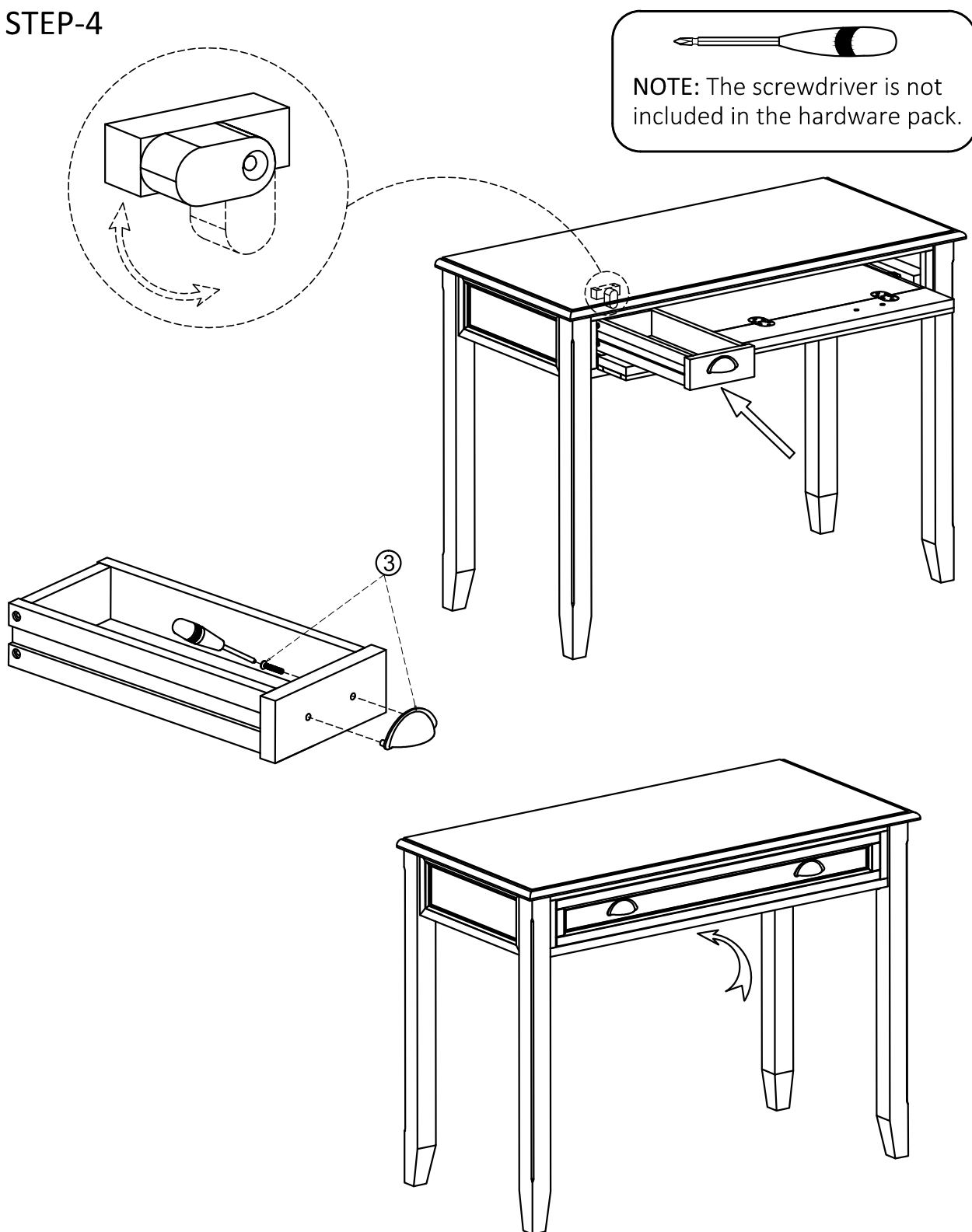
NOTE: The screwdriver is not included in the hardware pack.



1. Use Phillips screwdriver to attach Handle ③ to Tray Front.
2. Insert Keyboard Shelf into Top Compartment.

ASSEMBLY

STEP-4



1. Use Phillips screwdriver to attach Handle ③ to Drawer Front.
2. Insert the Drawers into Top Compartment.
3. Turn the wood lock (on the bottom frame) to be perpendicular to the frame for safety stop (intended to keep the drawers from pulling all the way out).

WARRANTY

Thank you for purchasing our product. These products have been made to demanding, high-quality standards and are guaranteed for domestic use against manufacturing faults for a period of 12 months from the date of purchase. This warranty does not affect your statutory rights.

We reserve the right to repair or replace the defective product, at its discretion.

This product is guaranteed for 12 months if used for normal purposes. Any warranty is invalid if the product has been overloaded or subject to neglect, improper use or an attempted repair by other than an authorized agent. Heavy-duty or daily professional/commercial usage are not guaranteed.

Due to continuous product improvement, we reserve the right to change the product specifications without prior notice.

PLEASE NOTE: This item is hand-crafted and hand-finished with utmost care. As such, variations and imperfections should be expected and should be welcomed as the natural beauty of the wood.