

Wall Mounted LED Mirror

For smooth and safe installation, please do the following:

Thoroughly read all instructions before installing the enclosed product.

Read and take note of all safety, care, and maintenance information.

PLEASE KEEP THIS INSTRUCTION MANUAL FOR FUTURE REFERENCE FOR PRODUCT OPERATION AND MAINTENANCE.

- Be sure to check all packing material carefully for small parts that may have come loose inside the carton during shipment.
- LED Bulb and driver included.
- Follow the assembly instructions by reading the numerical progression.
- A qualified electrician is recommended for the installation of this lighting fixture.
- Before installing fixture, disconnect power by turning off the circuit breaker or by removing the fuse at the fuse box.
- All electrical connections must be in accordance with local electrical code or standards.
- Estimated Assembly Time: 20 minutes.
- Tools Required for Assembly (not included): flathead screwdriver, Phillips screwdriver, pliers, electrical tape, and wire cutters.

The company and its warranty are not responsible nor liable for personal injuries or deaths to any person or any direct, special, incidental, or consequential damages, losses of profit, inconveniences, incidental expenses, labor or material charges, or resulting from the removal or replacement of any product or element or part, or any other costs resulting from the installation and use of the product or equipment.

Cleaning and Care

Care should be exercised when cleaning this product. Although its finish is extremely durable, it can be damaged by harsh abrasive cleaning pads. To clean, use a light, non-abrasive cleaning pad alongside a gentle solution or cleaning polish. For more detailed care and cleaning instructions refer to our Care and Cleaning Instructions guide.

Installation Safety

Inspect the product immediately upon receipt for the transit damage or missing parts. Handle the product with care and protect against knocks to all sides and edges of the glass.

Ensure there are no hidden pipes or cables in the wall before drilling. Wear suitable eye protection when drilling. Take care if drilling on tiled surfaces in case the drill slips.

CAUTION

The light sources for this product are non-changeable light diodes (LED). Do not disassemble the product, as the light diodes can cause damage to eyes.

NOTE: The important safeguards and instructions that appear in this manual are not meant to cover all possible conditions and situations that may occur. These factors must be supplied by the person(s) caring for and operating the fixture.

Do not install this fixture in hazardous locations.

WARNING AND SAFETY INSTRUCTIONS

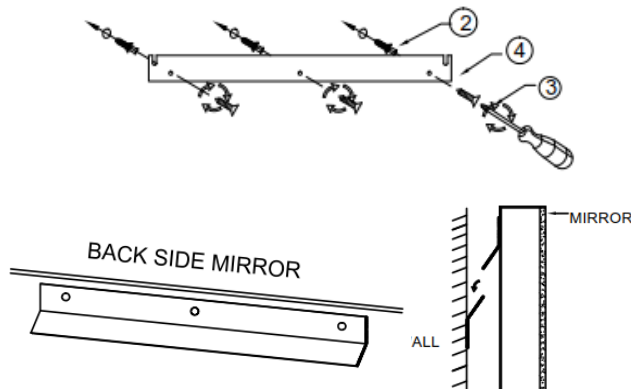


Before assembling your LED Mirror fixture, please make sure that you carefully read through this instruction guide. Refer back to this guide during installation to ensure your product is fitted safely and correctly. Keep these instructions for future use.

WARNING: Risk of Fire and Electric Shock

- All fittings must be installed in accordance with wiring regulations. If in doubt, consult a qualified electrician.
- Switch off the electrical supply at the main circuit board BEFORE installation and maintenance.
- Suitable for indoor use only. This product should be positioned well away from curtains and fabrics. Never cover the mirror.
- Regularly check the cord, the transformer, and all other parts for damage. If any part is damaged the product should not be used.

Fasten the Z-bar (4) onto wall by 3pcs screws (3)



TOOL REQUIRED (NOT PROVIDED)



Screw driver



power drill

Hardware List

NO.	Description	Sketch	Q'ty
1	Anchor-30mm		4 pcs
2	Screw-Ø4x30mm		4 pcs