

# ASSEMBLY INSTRUCTIONS

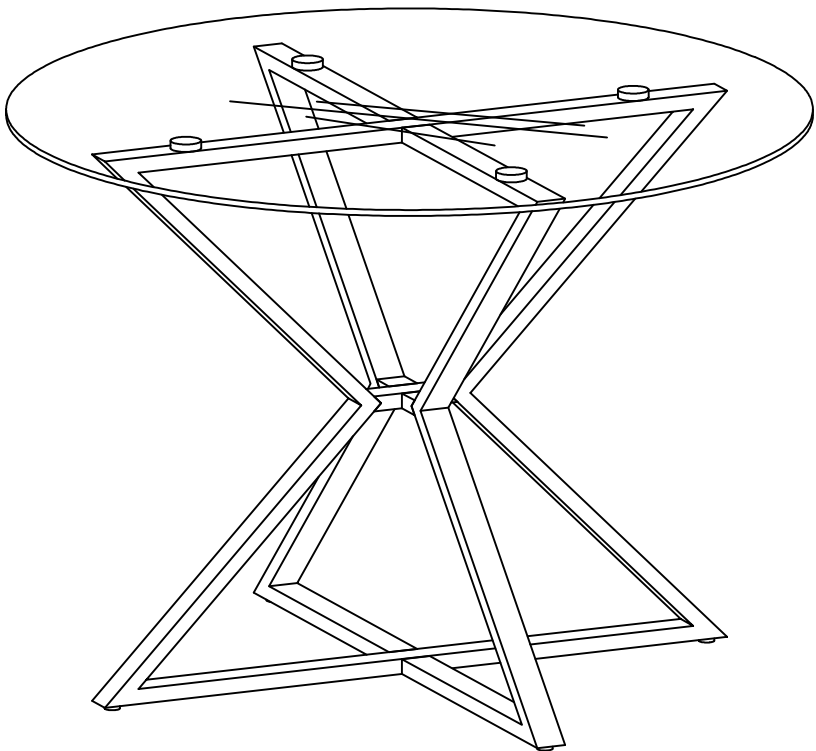
---

## TOOLS REQUIRED



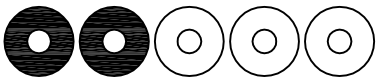
Allen Wrench

(Included)



2 - People  
Recommended

## ASSEMBLY RATING



EASY —————> DIFFICULT

The Assembly Rating is a 5-point system showing the level of effort needed to assemble a specific product.



## CHECK BEFORE STARTING

☐

### Are you missing anything?

Double-check all parts, hardware and accessories listed on Page 6 are accounted for.

☐

### Should we send any replacements?

Are there any irregularities or flaws in the parts? We can send replacements!

☐

### Check out our Quick Tips!

We recommend reviewing the pre-assembly handouts. Even experts need a refresher now and then!

☐

### Prep Time!

Please review the assembly instructions and all diagrams prior to assembling. Arrange parts as recommended on Page 7 and group identical hardware together to make assembling easier.

# PRE ASSEMBLY INTRODUCTION

We understand building ready-to-assemble furniture can be a challenging experience for some. To help avoid confusion, we have provided some helpful tips that may speed up the process.



## Teamwork

ALWAYS have at least two people to help with transporting and assembling the product to avoid potential injury and/or damage.



## Suitable Location

Assembling near the area of the intended location is highly recommended.



## Sufficient Space

Make sure you have enough space to move around during the assembly.



## Avoid Scratches

Use cardboard, blankets or a carpeted area while assembling furniture to prevent scratches.



## Flat Surface

Make sure the furniture rests on a flat and level surface with each leg evenly touching the floor.

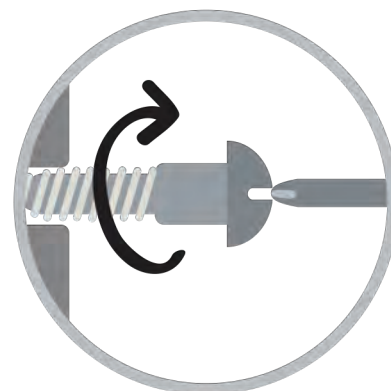
# ASSEMBLY AND CARE ADVICE



**FAILURE TO FOLLOW THE GUIDELINES BELOW MAY  
RESULT IN INJURY AND/OR PROPERTY DAMAGE.**



Position each part correctly  
and insert screws or bolts into  
their respective holes.

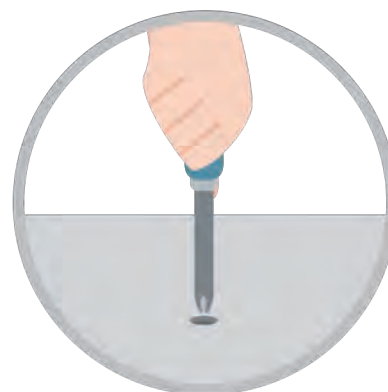


Turn clockwise to tighten and  
only tighten when step is  
completed or when instructed  
to do so.



Save the instructions and store  
any supplied tools for later  
maintenance.

Use the appropriate hand tools  
or power tools for assembly.  
Select steps, such as tightening  
screws and/or bolts, may require  
hand tools to avoid causing  
damage during assembly.



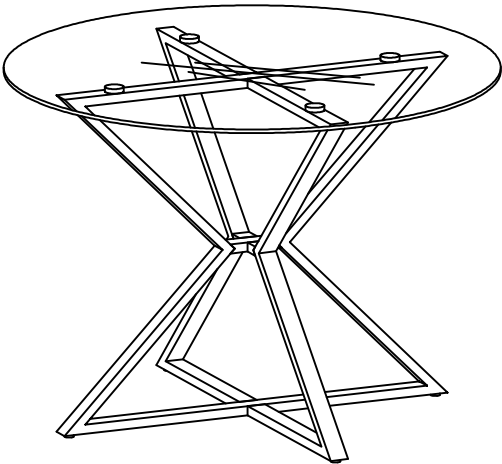
After two weeks, check and  
tighten any loose hardware and  
repeat again every six months  
thereafter.

**IT IS THE USER'S RESPONSIBILITY TO MAINTAIN THE FURNITURE. THE HARDWARE MAY LOOSEN OVER TIME AND MAY CAUSE THE FURNITURE TO BE WOBBLY AND UNABLE TO SUPPORT ITS INTENDED WEIGHT CAPACITY. THIS MAY LEAD TO COLLAPSE AND MAY CAUSE SERIOUS INJURY.**

# DINING TABLE

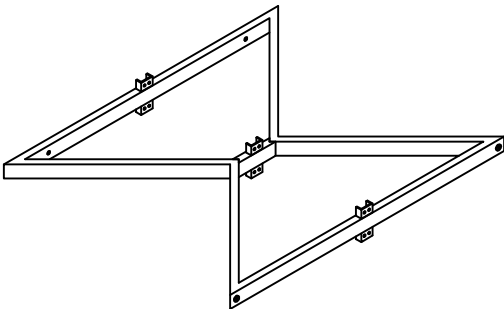


- Please keep instructions for future reference.
- Check the quantity and irregularity of parts and hardware before you start.



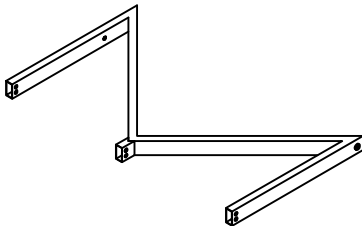
## PARTS

#1 1pc



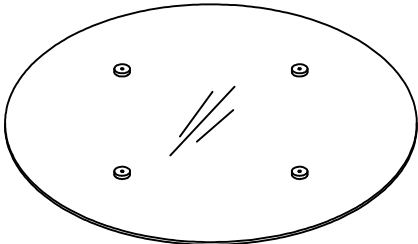
8-Shaped Frame

#2 2pcs



3-Shaped Frame

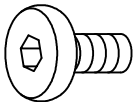
#3 1pc



Glass

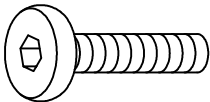
## HARDWARE

#A 12pcs



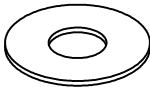
Bolt 1/4" \* 12mm

#B 4pcs



Bolt 1/4" \* 28mm

#C 16pcs



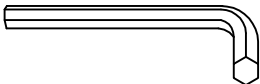
Flat Washer

#D 4pcs



Leveler

#E 1pc



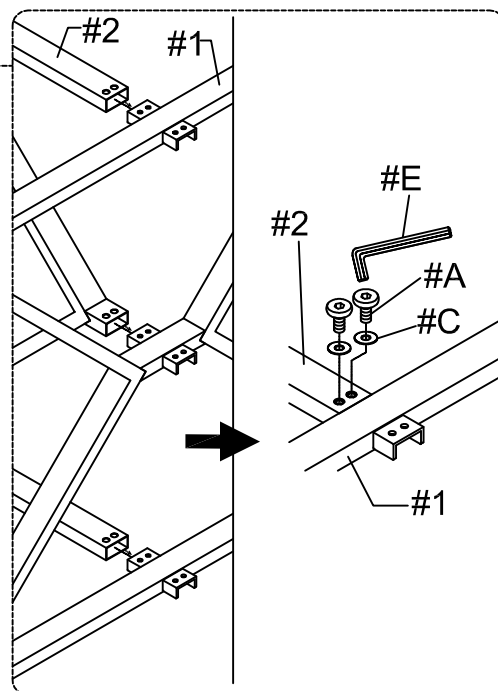
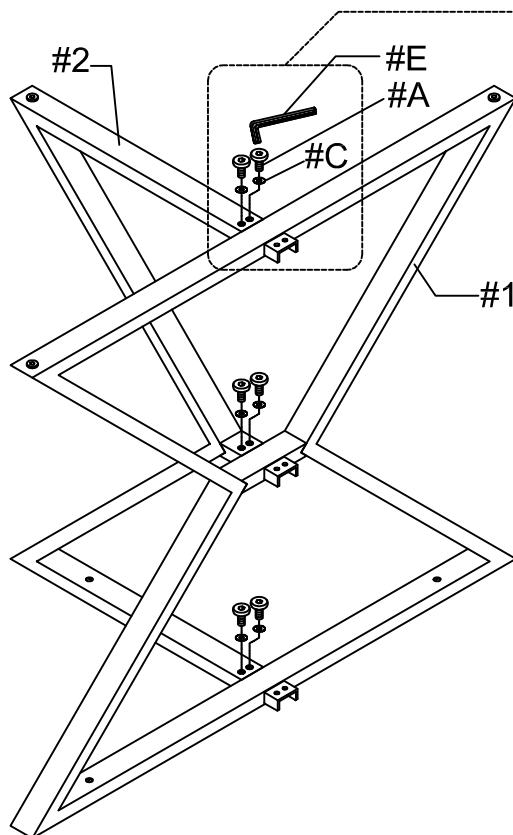
Allen Wrench

# ASSEMBLY INSTRUCTIONS

## 1

Part #1 x1pc  
Part #2 x1pc  
Hardware #A x6pcs

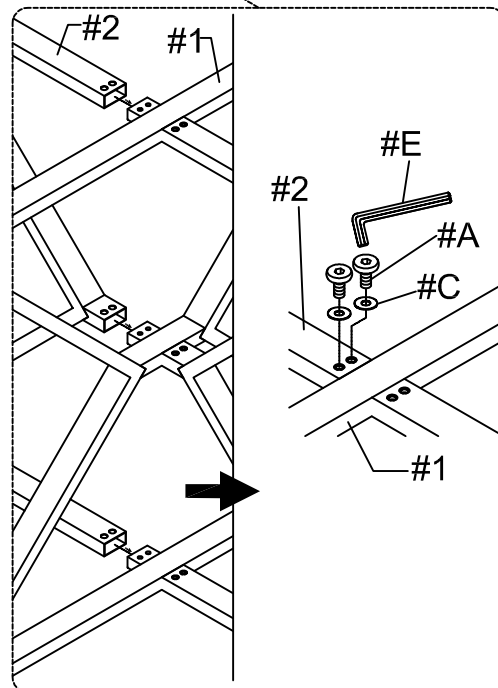
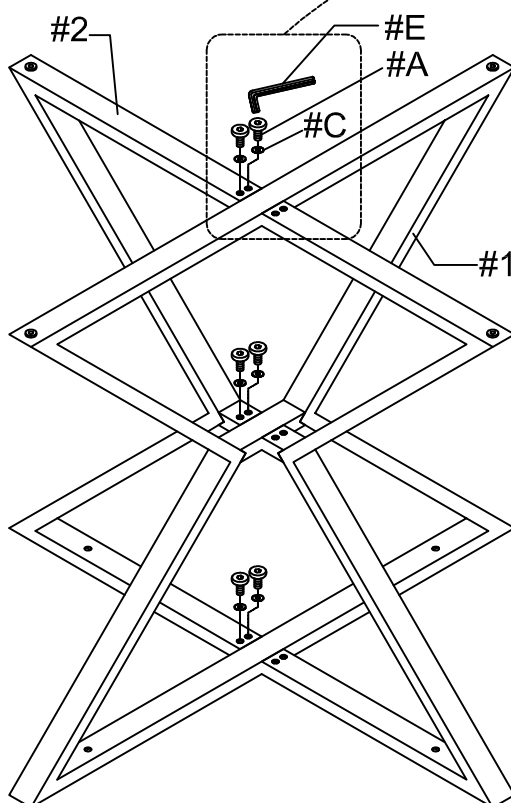
Align frame (#2) to the frame (#1),  
then secure by using bolts (#A)  
with washers (#C).



Align frame (#2) to the frame (#1), then  
secure by using bolts (#A) with washers  
(#C).

## 2

Part #2 x1pc  
Hardware #A x6pcs

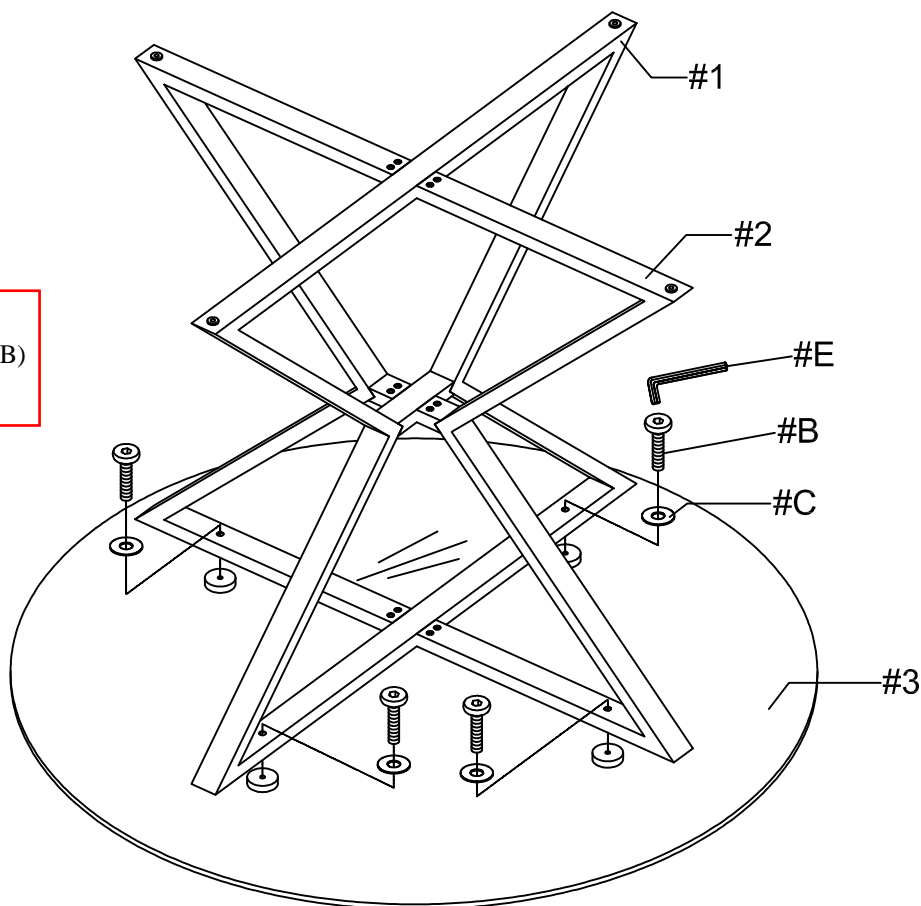


# ASSEMBLY INSTRUCTIONS

## 3

Part #3 x1pc  
Hardware #B x4pcs  
Hardware #C x4pcs

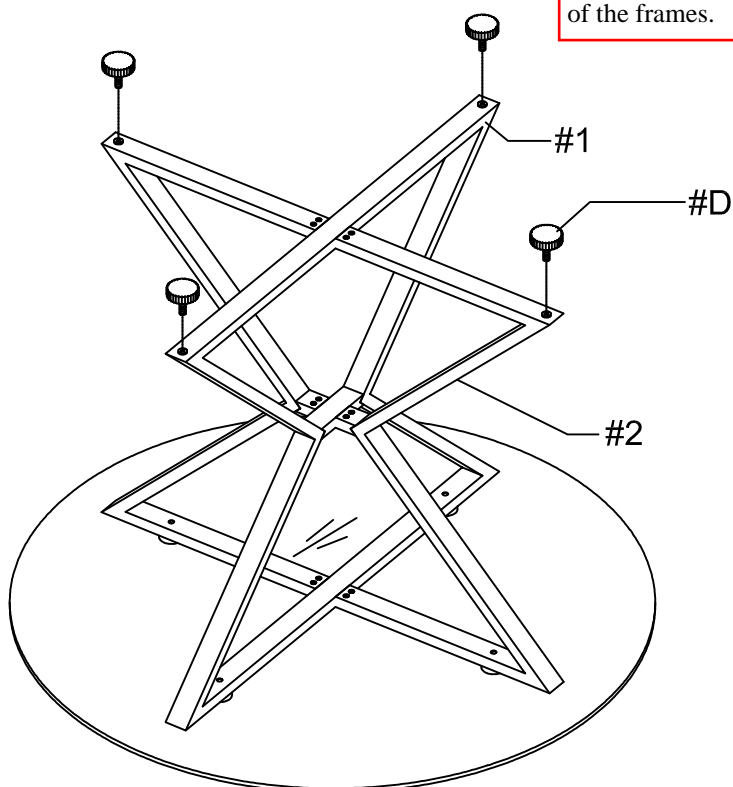
Align frame to the top (#3)  
then secure by using bolts (#B)  
with washers (#C).



## 4

Hardware #D x4pcs

Attach levelers (#D) to the bottom  
of the frames.



### ASSEMBLY COMPLETED



Please ensure the  
furniture rests on an even  
and flat surface. If the  
product wobbles or feels  
loose, double-check all  
bolts and/or screws are  
properly tightened and  
secured.



#### Keep this handy!

Please retain this instruction  
manual and any order-related  
information for future reference.



#### Lift, don't drag!

To avoid damage to product  
please always LIFT the product  
when transporting or adjusting  
the placement.