

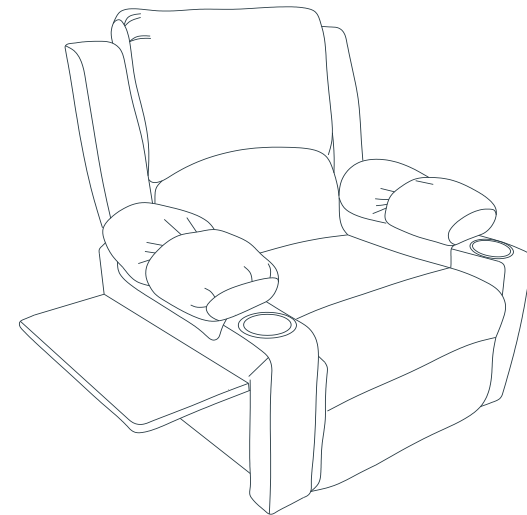
Assembly Instructions

⚠ Before you throw the carton, please ensure that you have all the parts needed for the assembly.

⚠ **Hardware Note:**
1. For each step please don't fully tighten all the screws at first, when they all align to the holes you can fully tighten them.

2. All the bolts should be assembled **vertically** to the holes.

⚠ **Spare parts** can be found in the hardware box if you do not have enough bolts for assembly.



⚠ THIS INSTRUCTION BOOKLET CONTAINS IMPORTANT SAFETY INFORMATION. PLEASE READ AND KEEP FOR FUTURE REFERENCE.



Before You Start

Please read all instructions carefully and keep it for future reference.

General Security Warning

Caution: Children should use this product under the parental supervision.

Danger: Keep all small parts and packaging materials for this product away from babies and children, otherwise they may pose a choking hazard.

Danger: Lack of attachment may cause a risk of tipping.



WARNING: CHOKING HAZARD

-Small parts.
Not for children under 3 years.

Warning for Assembly

- ⚠ Assembled only by adults
- ⚠ Remove all packaging, separate and count all parts and hardware.
- ⚠ Read through each step carefully and follow the proper order.
- ⚠ We recommend that, where possible, all items are assembled near the area in which they will be placed in use, to avoid moving the product unnecessarily once assembled.
- ⚠ Ensure a secure surface during installation, and always place the product on a flat, steady and stable surface.



Fabric Tips :

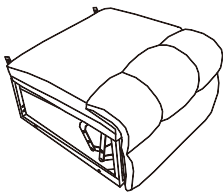
There must be some wrinkles in the fabric, you can wait for 24 hours for it to recover naturally or use a hanging ironing machine to steam it.

Assembly Instructions

Parts and Hardware

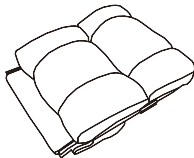
Please check to make sure you have all parts and hardware before starting assembly process.

Ⓐ



Seat x1

Ⓑ



Back x1

Ⓒ

Right



Arm pillow x1

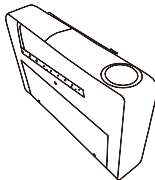
Ⓓ

Left



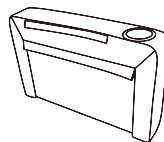
Arm pillow x1

Ⓒ1



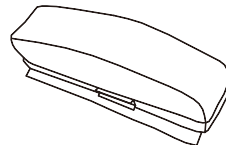
Right arm x1

Ⓓ1



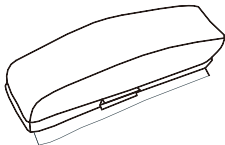
Left arm x1

Ⓓ2



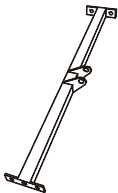
Left wing x1

Ⓒ2



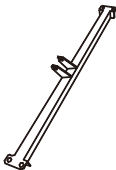
Right wing x1

Ⓘ



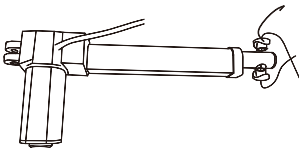
Front tube x1

Ⓙ



Back tube x1

Ⓚ



Electric motor x1

Ⓛ



Washer x2

Ⓜ



Bolt x2

Ⓝ



Bolt x2

has been assembled to the bottom fo seat

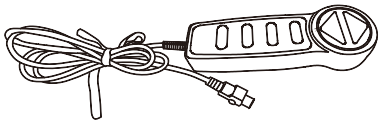
has been assembled to part K

Assembly Instructions

Parts and Hardware

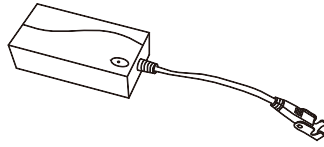
Please check to make sure you have all parts and hardware before starting assembly process.

⓪



Remote control x1

Ⓟ



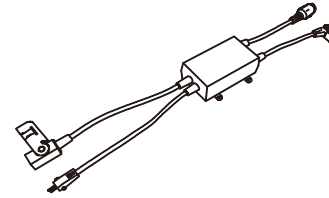
Power x1

Ⓠ



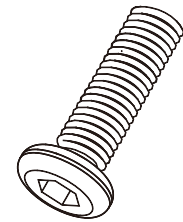
Power cord x1

Ⓡ



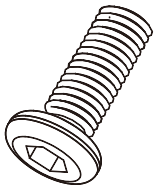
Power cord x1

①



Long bolt x6

②



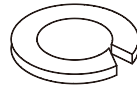
Short bolt x8

③



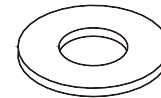
Leg x4

④



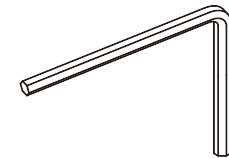
Spring washer x6

⑤



Flat washer x6

⑥



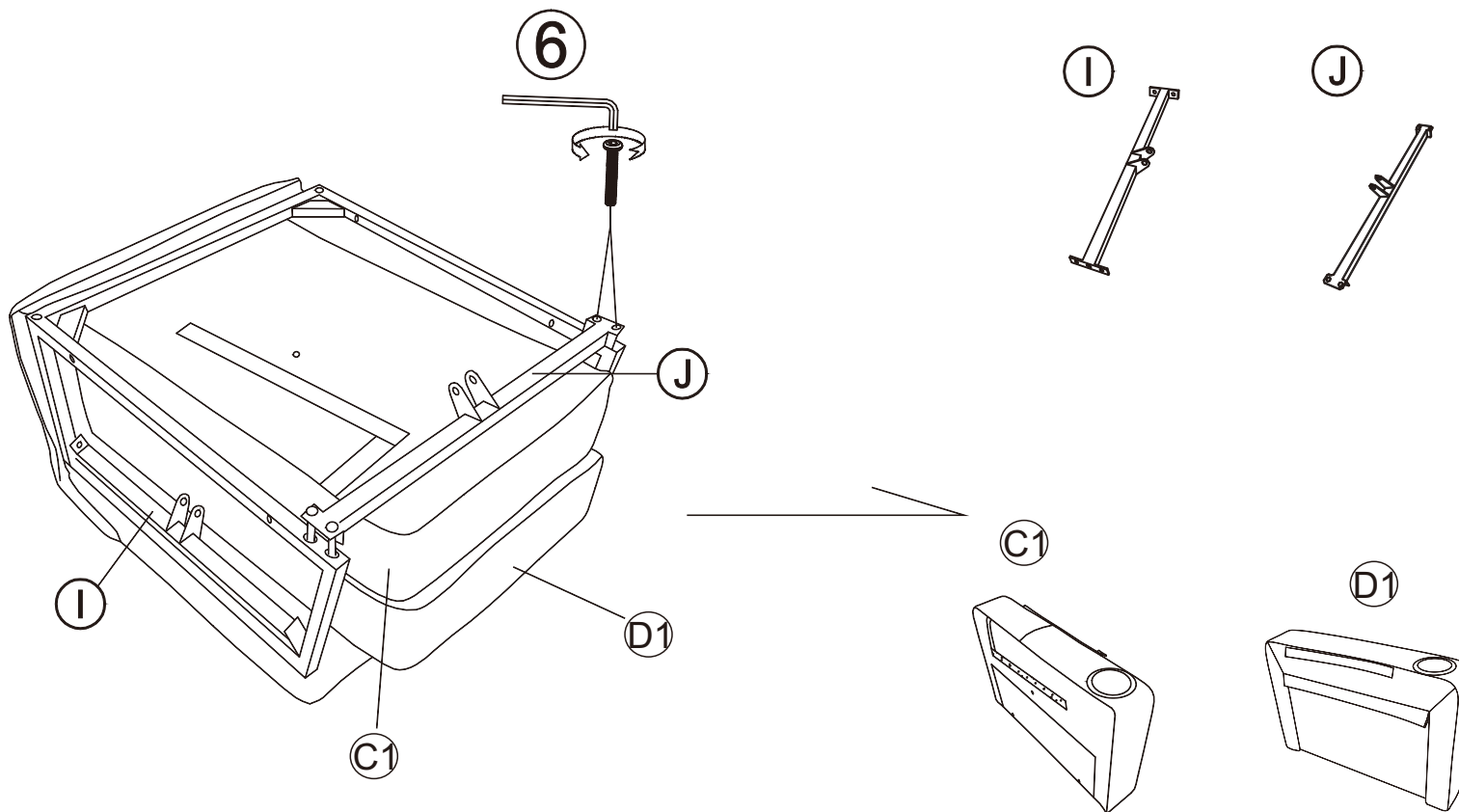
Wrench x1

Assembly Instructions

Assembly Instructions

Please check to make sure you have all parts and hardware before starting assembly process.

Step 1: Take out part I ⊕ J ⊕ C1 ⊕ D1 from the bottom of seat.



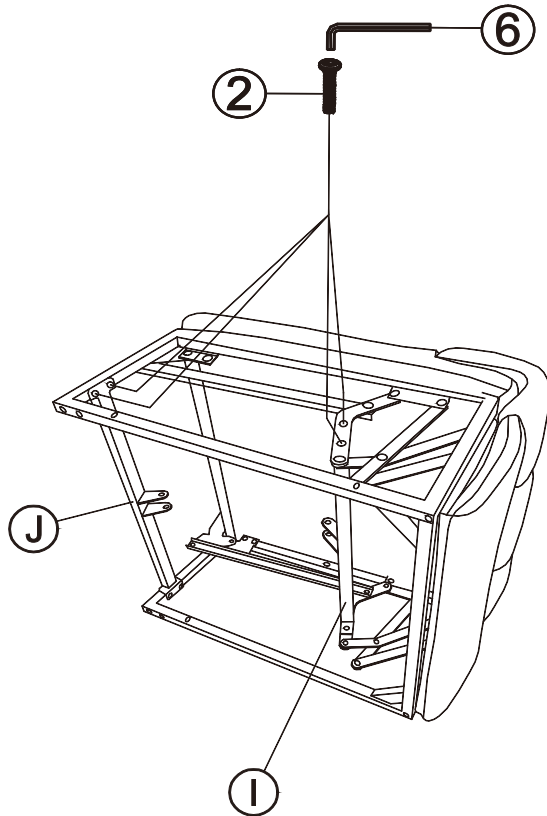
Assembly Instructions

Assembly Instructions

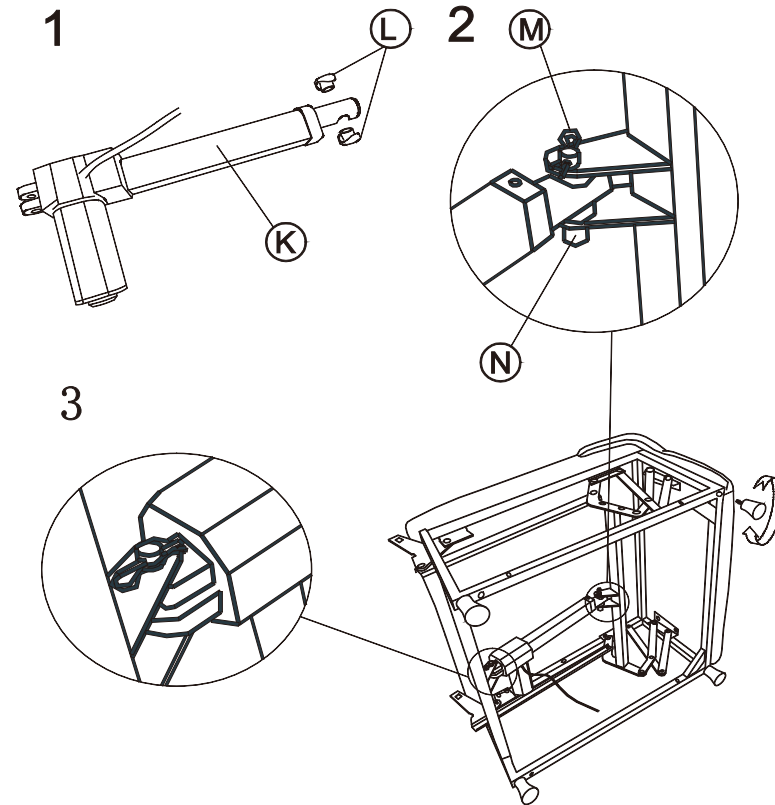
Please check to make sure you have all parts and hardware before starting assembly process.

Step 2: Assemble ① + ② to the side of seat frame.

! Do not fully tighten the bolts.



Step 3: Assemble ③ to ① and ②.




! Until electric motor is assembled then fully tighten the bolts.

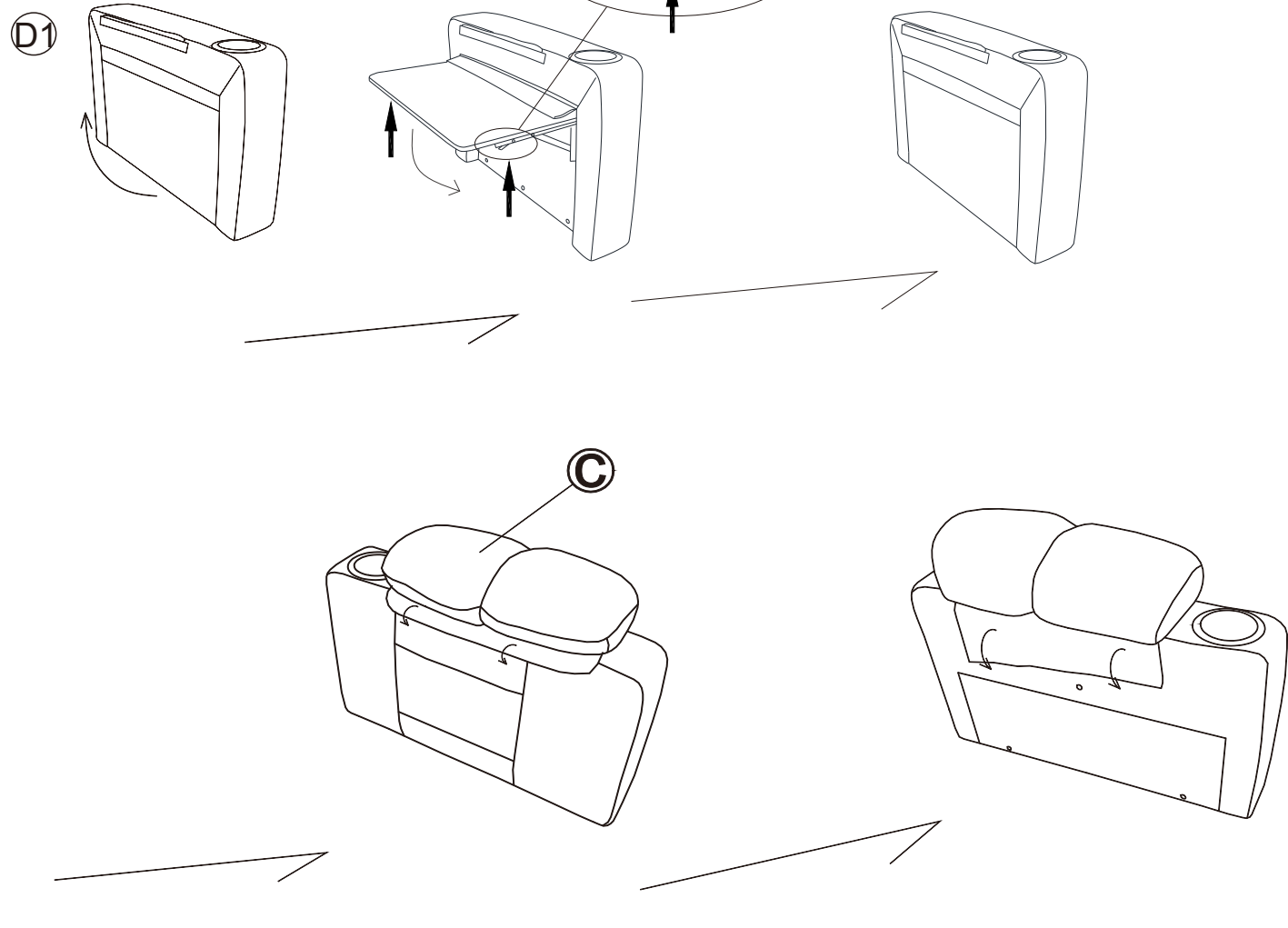
Assembly Instructions

Assembly Instructions

Please check to make sure you have all parts and hardware before starting assembly process.

Step 4: Assemble C + D to C1 + D1.

 Press the buttons on the 2 hinge at same time when fold the the table.

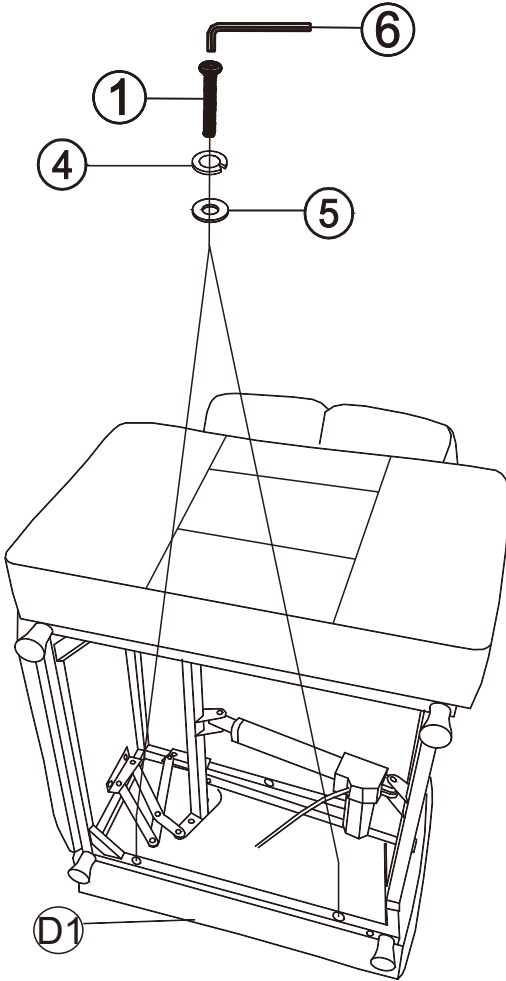
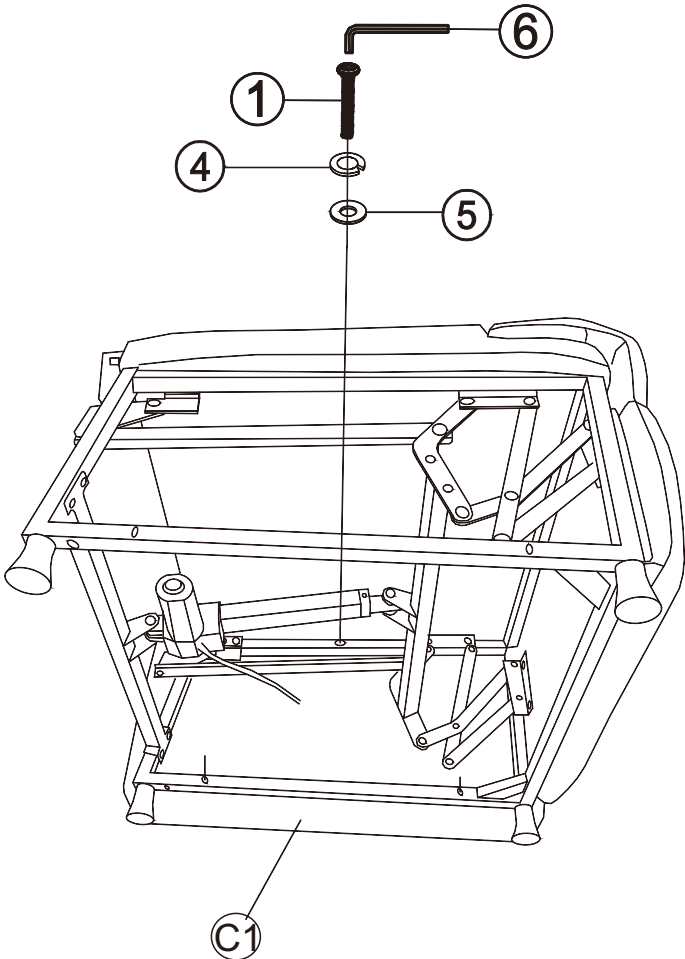


Assembly Instructions

Assembly Instructions

Please check to make sure you have all parts and hardware before starting assembly process.

Step 5: Assemble A to C1+D1.



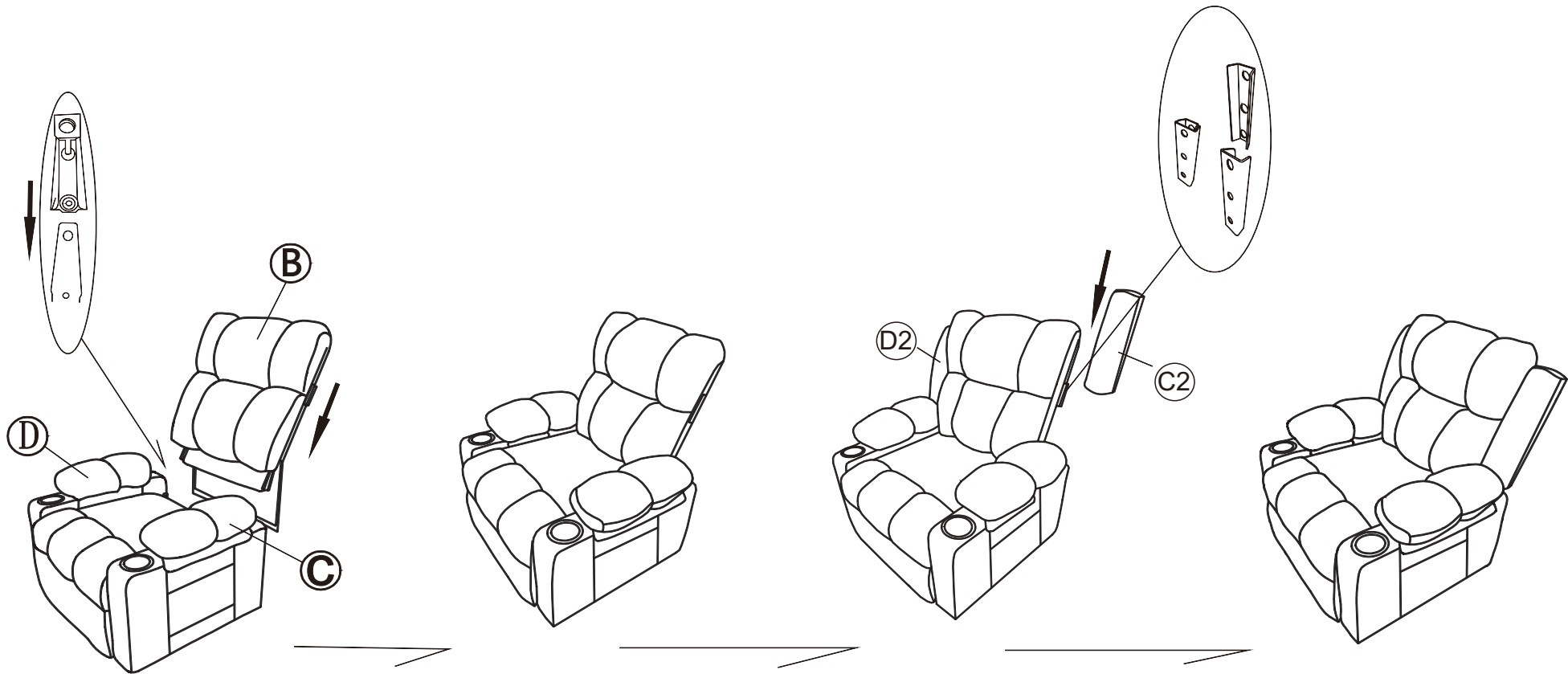
Assembly Instructions

Assembly Instructions

Please check to make sure you have all parts and hardware before starting assembly process.

Step 6: Assemble **B** to **A**.

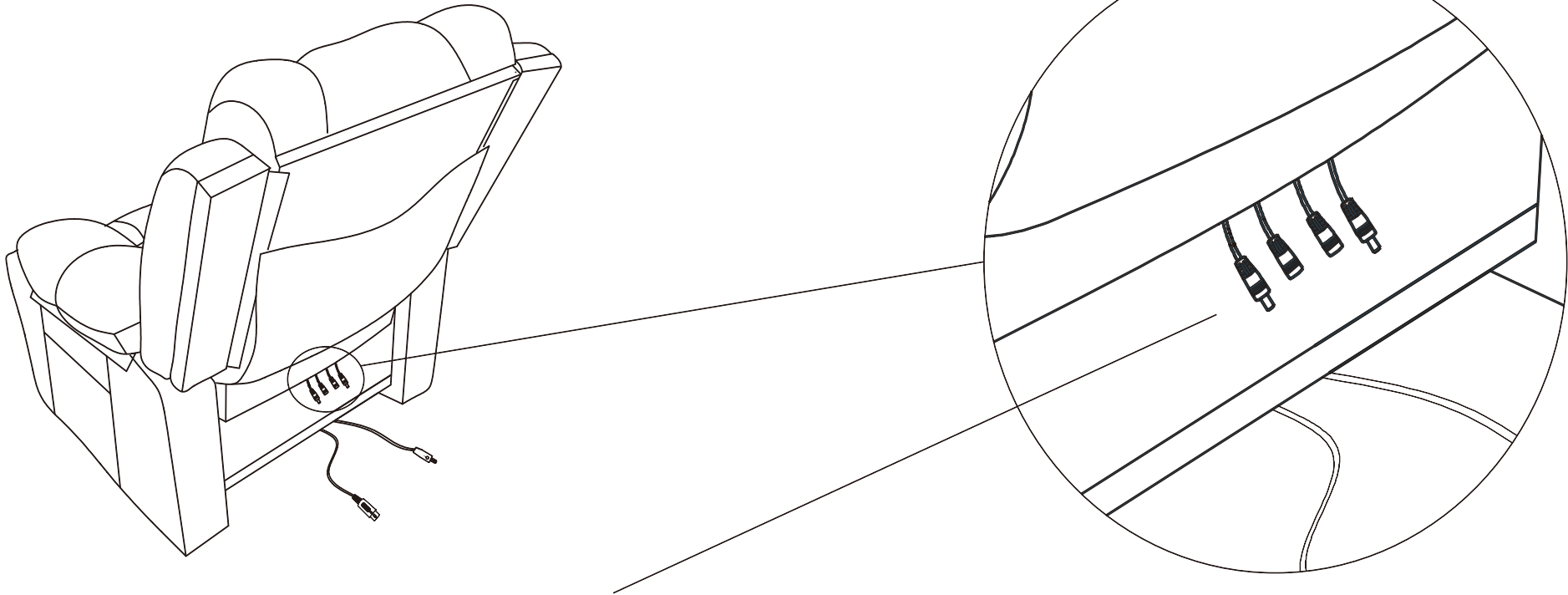
Step 7: Assemble **C2** and **D2** to **B**.



Assembly Instructions

Assembly Instructions

Please check to make sure you have all parts and hardware before starting assembly process.

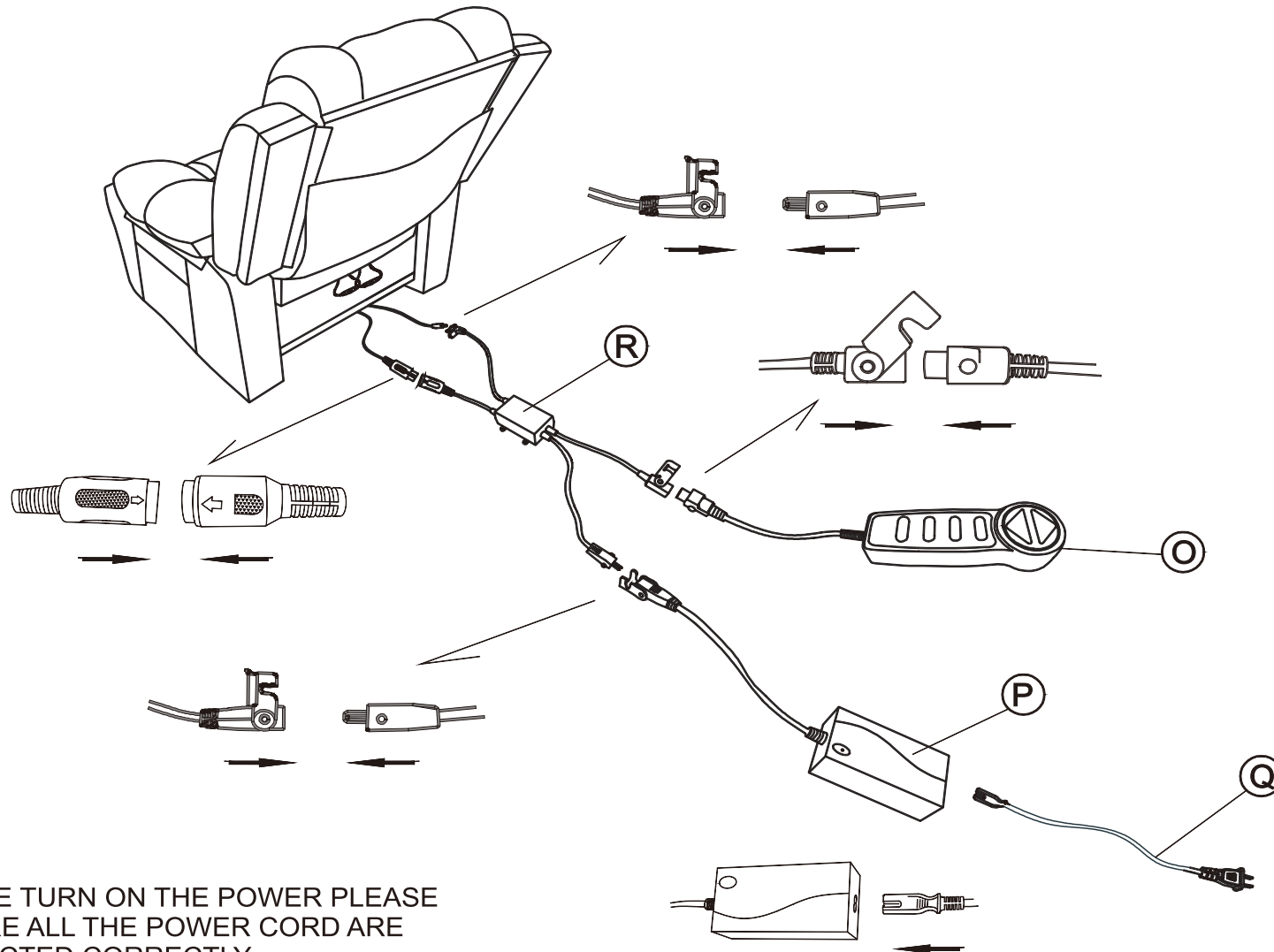


POWER CORD SHOULD BE CONNECTED WITH SAME COLOR.

Assembly Instructions

Assembly Instructions

Please check to make sure you have all parts and hardware before starting assembly process.



BEFORE TURN ON THE POWER PLEASE
BE SURE ALL THE POWER CORD ARE
CONNECTED CORRECTLY.

Assembly Instructions

EN

Anweisung zur Handsteuerung

Abbildung



Model: JS1808-TG-8JR

Funktion einschleBlich:

Backrest up/down, eight o'clock vibration massage, heating, and auxiliary charging

TechnischeDaten.:

1.Spannung: AC100-240V DC29V 2A

2.Leistung: 58W

3.Frequenz: 50/60Hz

4.Zeitschaltuhr: 30minute

Operation instructions

Firstly, check if the local power supply matches the transformer power supply.
If so, then connect the plug to establish the circuit

The top of the handheld controller has a USB interface,
It helps to charge electronic devices such as mobile phones.

1.The product requires a DC 29V power supply, and the indicator light will light up after startup,



2.Long press this button, the backrest of the chair will continue to lift, and the blue indicator light will flash. Release the button to stop lifting,The indicator light stops flashing.



3.Long press this button, the backrest of the chair will continue to descend, and the blue indicator light will flash. Release the button to stop descending,The indicator light stops flashing.



4.Massage on key: Press this button once to start the massage, and the massage points will automatically switch (the red indicator light will light up) Press again to turn off the massage



5.Heating on key: Press this key once to activate the heating function (yellow indicator light on). Press it again to activate the heating function,Turn off heating.



6.Massage mode key: defaults to mode 1 (green light on);
Press once to enter mode 2 (the red indicator light is on);
Press again to enter mode 3 (the yellow indicator light is on);



7.Massage area selection key: default to four area massage enabled (blue indicator light on);
Press once to activate the waist massage and close the rest of the body;
Press the buttocks massage again to activate, and close the rest of the area;
Press the leg massage again to turn it on, and turn off the rest of the body;
Press again to open all four parts

Remarks:

①During the process of lifting/lowering the backrest, the massage function stops working. When the lifting/lowering is completed, the massage immediately resumes

②During the process of lifting/lowering the backrest, the charging function stops working. When the lifting/lowering is completed, charging immediately resumes