

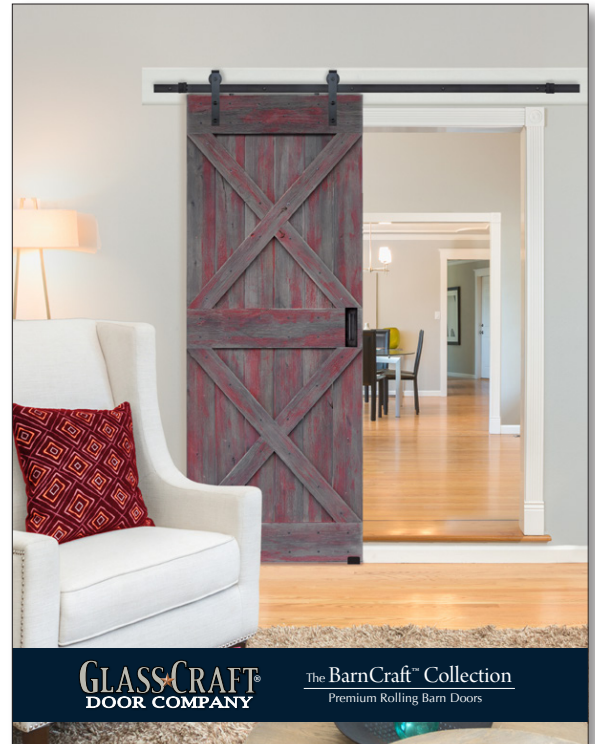


BARNDOORZ.COM

BarnCraft™ Rolling Door Product Guide

Effective June 2016

This product guide includes product information for the rolling door products included in our 2016-17 BarnCraft Premium Rolling Door catalog.



Contact Us

Phone: 1-713-400-6626

E-mail: info@barndoorz.com

Web site: www.barndoorz.com

Hours of Operation

Monday through Friday

Eastern	9:00 AM–5:00 PM
Central	8:00 AM–4:00 PM
Mountain	7:00 AM–3:00 PM
Pacific	6:00 AM–2:00 PM

You are welcome to visit and tour our 185,000 square foot and door facility. Please call first, prior to your visit. Weekday hours are listed above. Should you wish to pick up your order, please call to confirm that the order is available for loading prior to your arrival.

Basic Information and Terms for Rolling Doors

A typical BarnCraft door installation consists of two parts; the door, and the hardware kit. These two items are to be ordered independently. Here is information on these BarnCraft products:

IMPORTANT: All BarnCraft rolling door installations must be installed correctly, with the hardware securely mounted onto the wall. Failure to do so could result in damage, injury, or death. Installation should be done by an experienced installer. The rollers must be installed with the distance from the bottom of the roller wheels to the top of the door at 1-7/8". And the Anti-Jump disks and floor guide must be installed in order to ensure a safe installation.

Video guides for BarnCraft Rolling Doors:

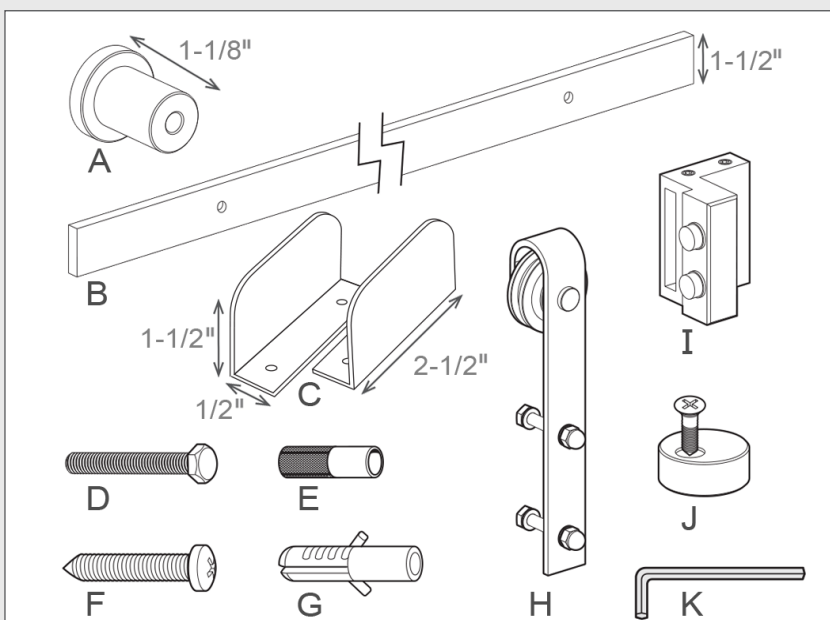
- Several video guides are available to assist with BarnCraft Door products, including:
 - Assembly video for unassembled barn door series doors
 - Installation of a single rolling door
 - Installation of a double rolling door
 - Installation of a bypass quadruple door

Doors for Rolling Door installations:

- Any door may be used with a rolling door installation provided that it is of an appropriate size to cover the opening
- Four styles of doors are shown in the BarnCraft Catalog: 1) Barn Doors 2) Glass Doors 3) Contemporary Doors, 4) 2 Panel Solid Doors
- Any of GlassCraft's doors may be used with our Rolling Door hardware, provided that the door slab weight does not exceed 220 pounds.
- Refer to the next page for guidelines on selecting an appropriate door slab size for the opening
- When ordering for a double door installation, you must order 2 doors and 2 hardware kits

Hardware Kits for Rolling Door installations:

- Hardware Kits consist of all necessary hardware to install a single rolling door
- Kits include a steel rail. You may choose from 3 door lengths as is appropriate for your installation. All are the same price, and are included in the price of your rolling door hardware kit:
 - 79-3/4" length (use for door widths up to 36" wide)
 - 90 inch length (use for 42" wide doors)
 - 100 inch length (use for 48" wide doors)
 - for wider custom doors, you may need to supply your own door rail, as we cannot ship parts longer than 100 inches
- Door roller straps are all made from 5mm (1/4" nominal) thick steel
- Door rollers are all "quiet glide" nylon



Included in the Kit

- A Stand-off Bracket (x5)
- B Rail (x1)
- C Floor Door Guide (x1)
- D Bolt (x5)
- E Bolt Wall Anchor (x5)
- F Log Bolt (x5)
- G Log Bolt Wall Anchor (x5)
- H Roller (x2)
- I Stopper (x2)
- J Anti Jump (x2)
- K Allen Wrench (x1)

Optional: Handle and Lock

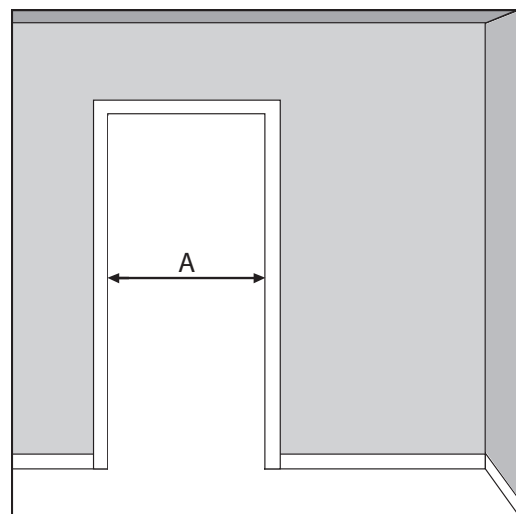
Note: Hardware may be ordered with or without the BarnCraft doors.

Determining the Required Door Panel Size for Rolling Doors

The door panel needs to be slightly wider than the door opening. The Door will be mounted about 1/2 to 1" above the floor level, so the door panel can be the same height as the door height opening. Here are some guidelines on measuring.

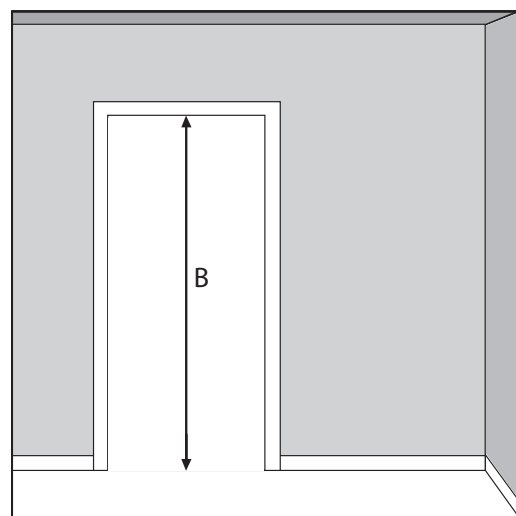
Determine the minimum door width:

To determine the minimum door width, measure the distance between the inside frame opening and add 2" to each side ($A + 2" + 2" = \text{minimum door width}$). This will allow the door to cover the frame opening when the door is fully closed.



Determine the minimum door height:

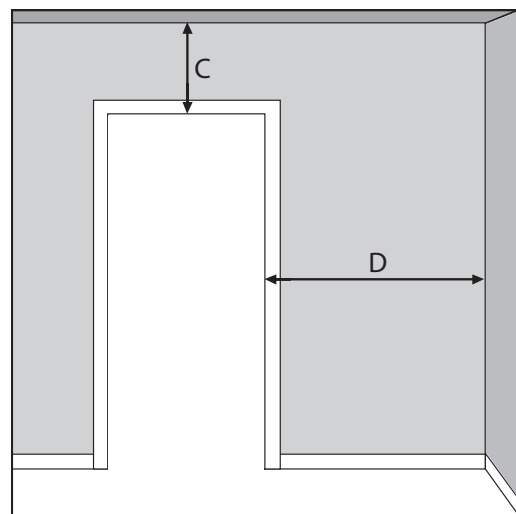
To determine the minimum door height, measure between the finished floor and the frame, then subtract 1/2" for floor clearance from the bottom of the door ($B - 1/2" = \text{minimum door height}$). Door may cover the top trim if desired.



Check for minimum door clearance:

A minimum clearance of 6 1/2" (C) is required from the top of the door to the ceiling, to accommodate the track and rolling hardware. The top of the door should be level or above the frame opening.

A minimum clearance of available wall space **equal to** the **actual door width** is required (D) for the door to completely roll free of the door opening.



Product Specifications: BarnCraft™ Door Rollers

- Nominal dimensions for our 5 Rolling door rollers are shown here. These are hand-made products, and the dimensions may vary slightly.
- All roller wheels are produced using a high durometer nylon and are considered "quiet-glide".
- All roller fixtures are powder coated steel....1/4 inch nominal thickness...black in color.

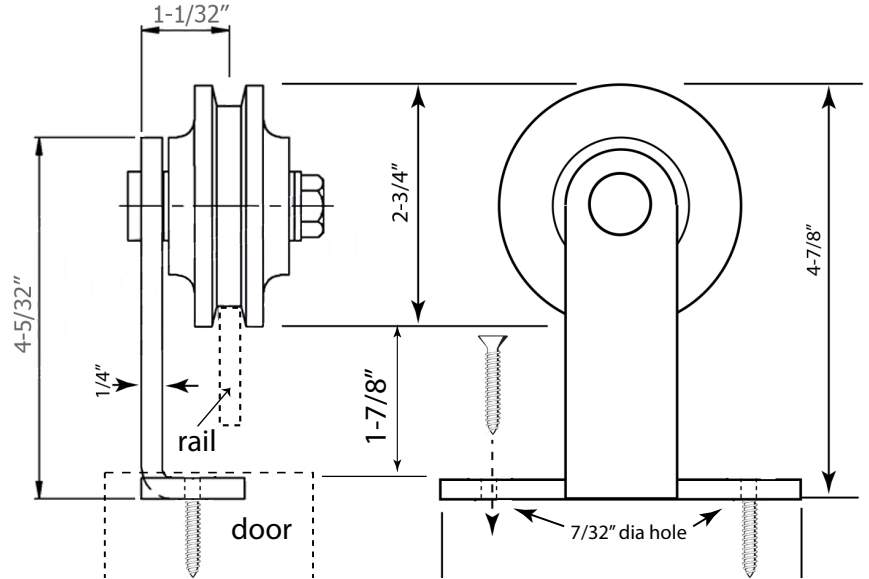
Installation Note:

For correct installation of all five Roller Designs, the distance from the bottom of the roller wheel to the top edge of the door must be 1-7/8".

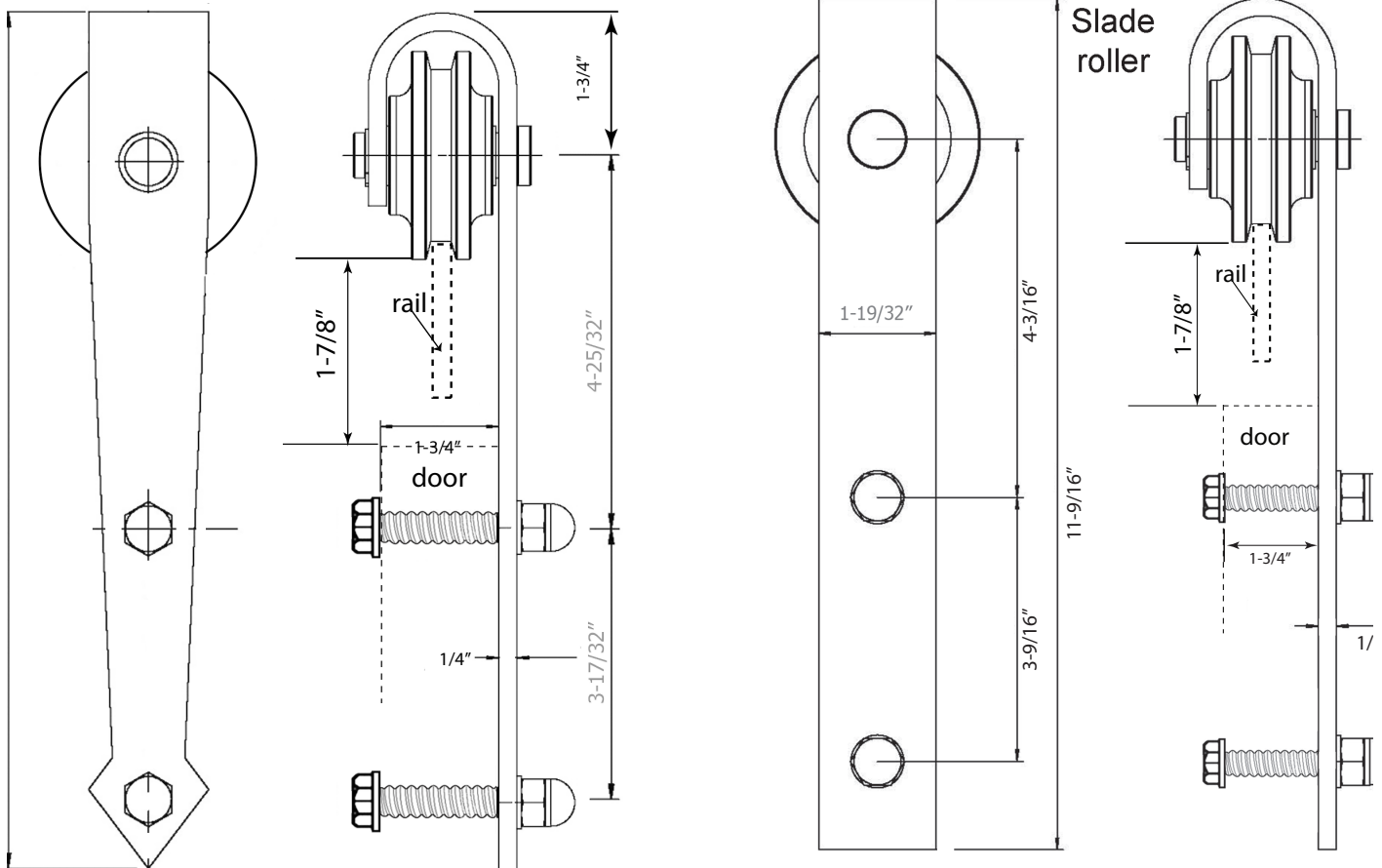
Gage Door Rollers



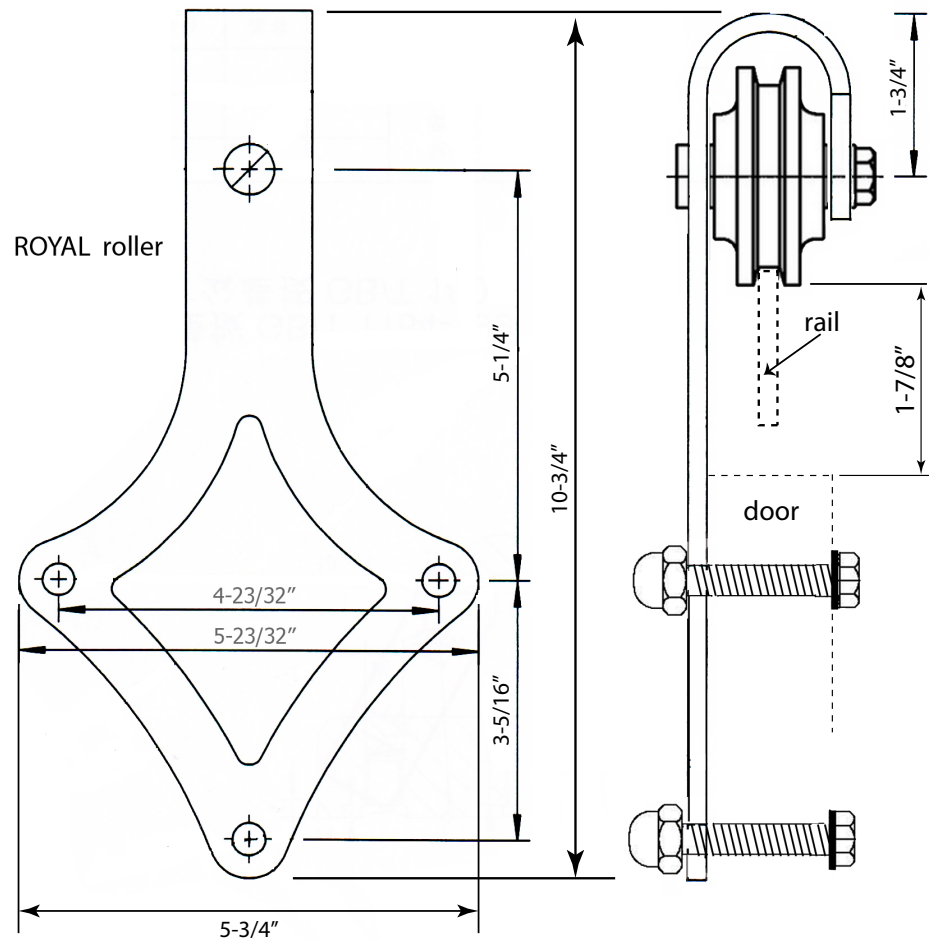
Note: Gage rollers are designed to be recessed into the top edge of the door.



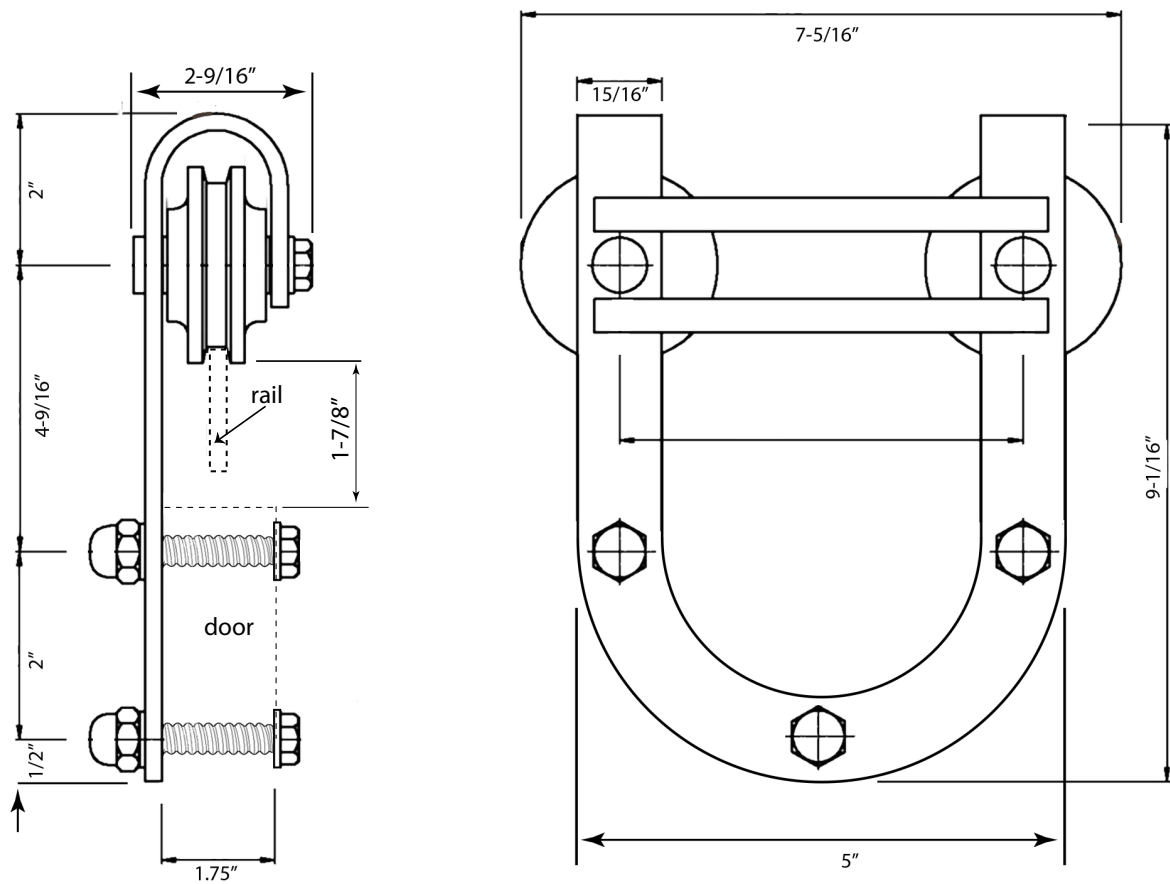
Slade Door Rollers



Royal Door Rollers



Waggoner Door Rollers



Product Specifications: BarnCraft™ Pull Handles and Door Lock

Rolling Door Pull Handles

- 1) Pull handles for BarnCraft rolling doors are real hand-wrought iron. Slight appearance/size variance can be expected in each.
- 2) Pull Handles are packaged separately and uninstalled on all GlassCraft door products so the doors may be properly finished before the straps are installed. Metal door straps are individually bagged and boxed with screw fasteners included.
- 3) Handles may be ordered individually, without other products.
- 4) Metal door handles may be "touched up" with any exterior grade metal paint, such as Rustoleum™ if needed.

Corona Wrought Iron Pull Handle



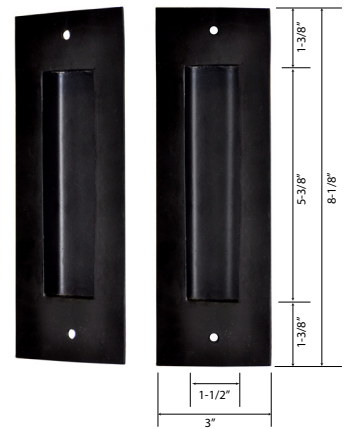
Santa Fe Wrought Iron Pull Handle



Monterrey Wrought Iron Pull Handle



Vista Wrought Iron Pull Handle



A 1/2" deep pocket must be routed/carved into the door to use the Vista Pull, as the face plate mounts on the door surface

Rolling Door Lock Kit

These small lock kits are designed to be mounted on the edge of the opening over which the rolling door slides.

- 1) The lock mounting plate screws onto the opening with 3 screws...2 round head screws on the top and bottom, and a flat head screw (not visible in the photos) in the middle.
- 2) The moving lock plate mounts using the 2 round head screws and 2 washers.
- 3) The rolling door lock plate mounts on the edge of back face surface of the rolling door. Note that a 1/8" x 1-1/2" slot that is 1/4" deep must be cut into the door. This rolling door lock plate mounts over the slot.
- 4) The lock is set by rotating the moving lock plate into the slot on the rolling door lock plate.

