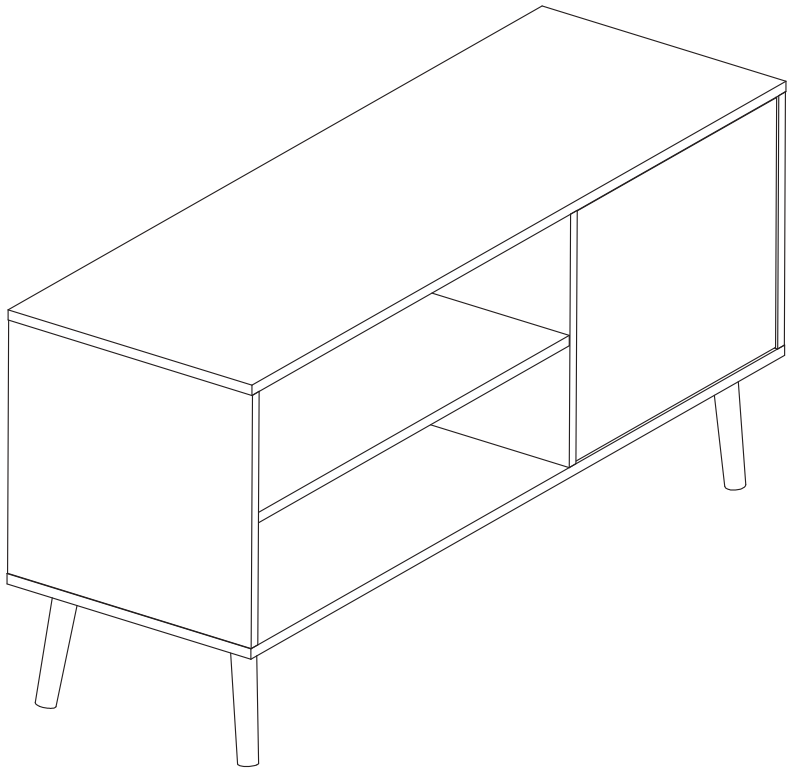


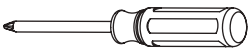
TV Stand Instruction Manual

V2.0

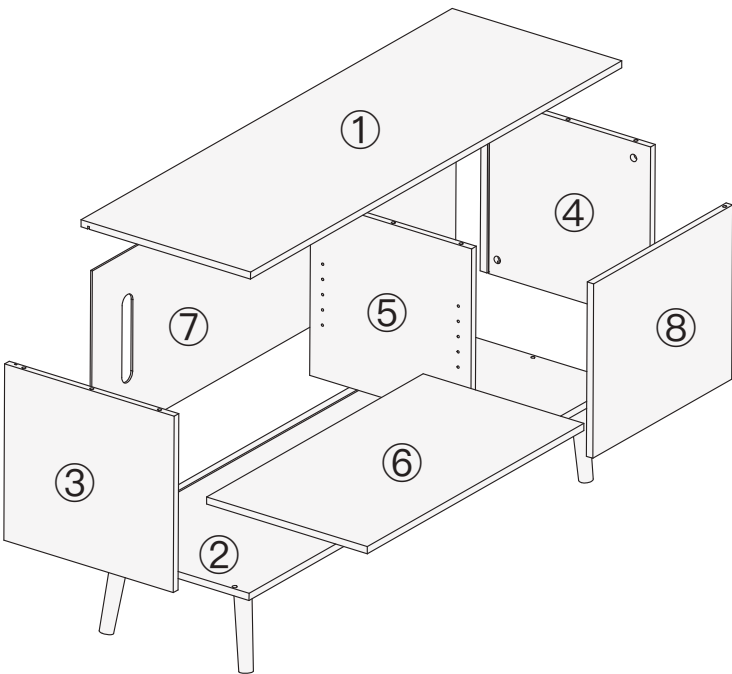


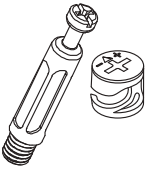
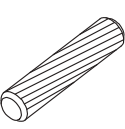


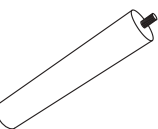
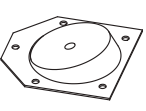
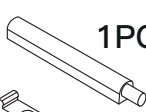



Tools Needed (Not Included)

Phillips Screwdriver



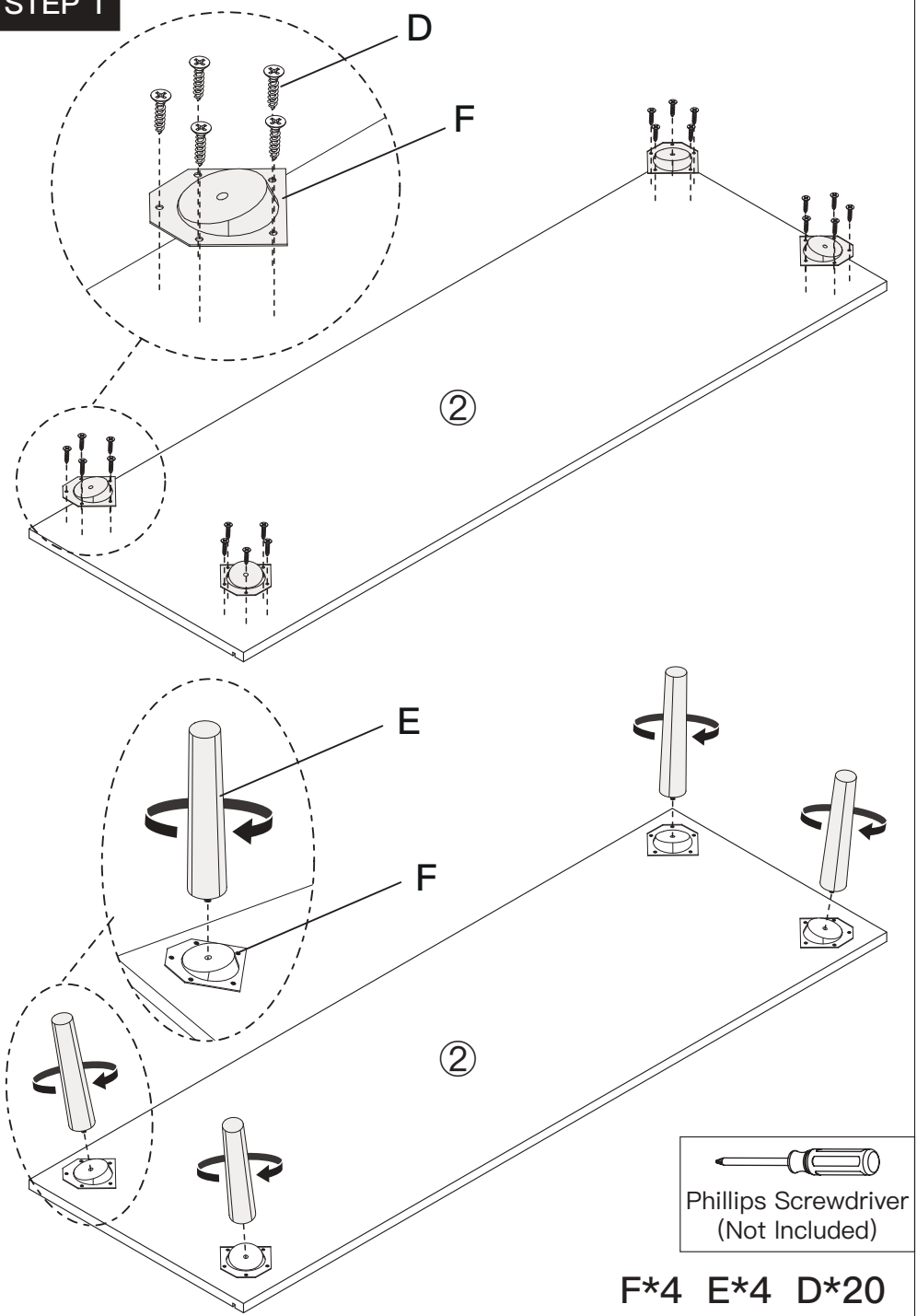
Supplied Parts and Hardware



| | | | | |
|--|---|---|---|--|
| A  12 Set | B  40x8mm 6PCS | C  2PCS | D  14x3.5mm 22PCS | E  7.9in. (200mm) 4PCS |
| F  4PCS | G G1  1PC 1PC | G2  1PC | G3  10x3.5mm 1PC | H  5x6mm 4PCS |

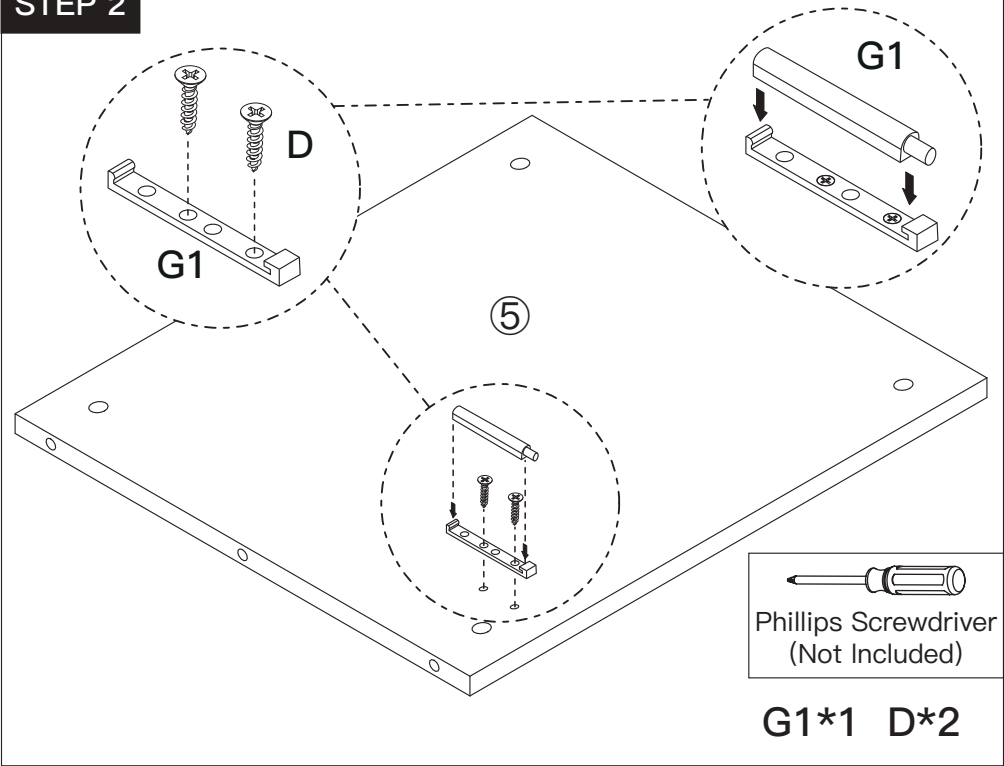
- 1 -

STEP 1

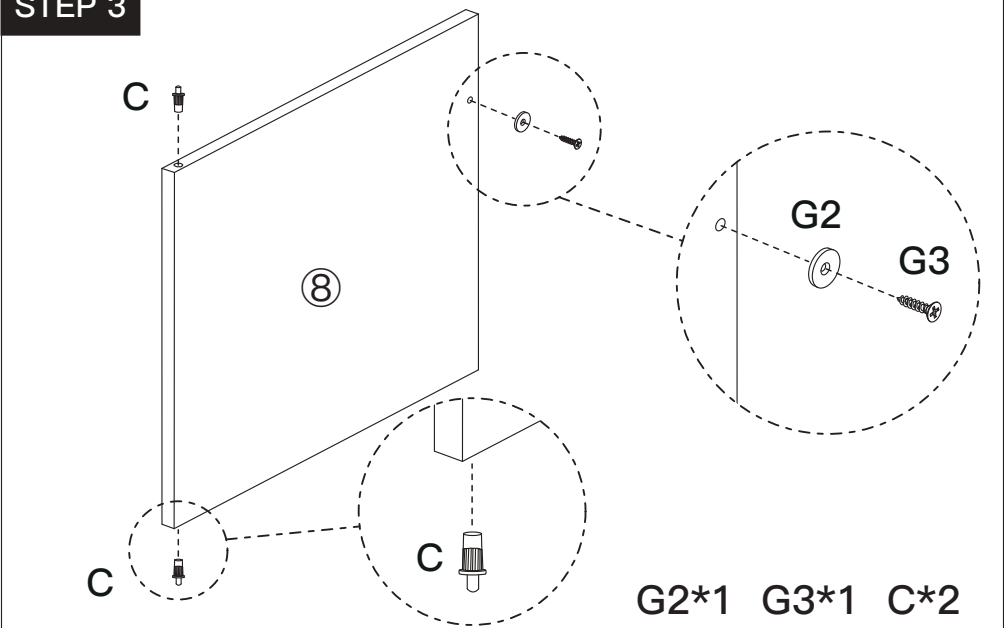


- 2 -

STEP 2



STEP 3



- 3 -

