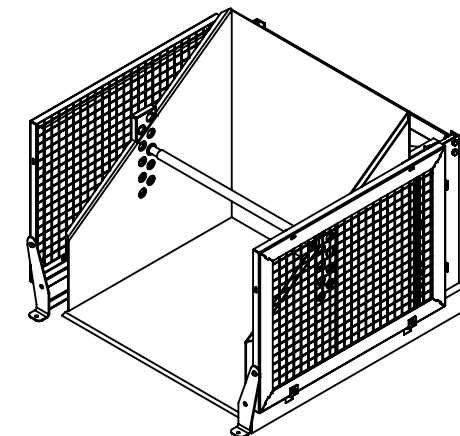
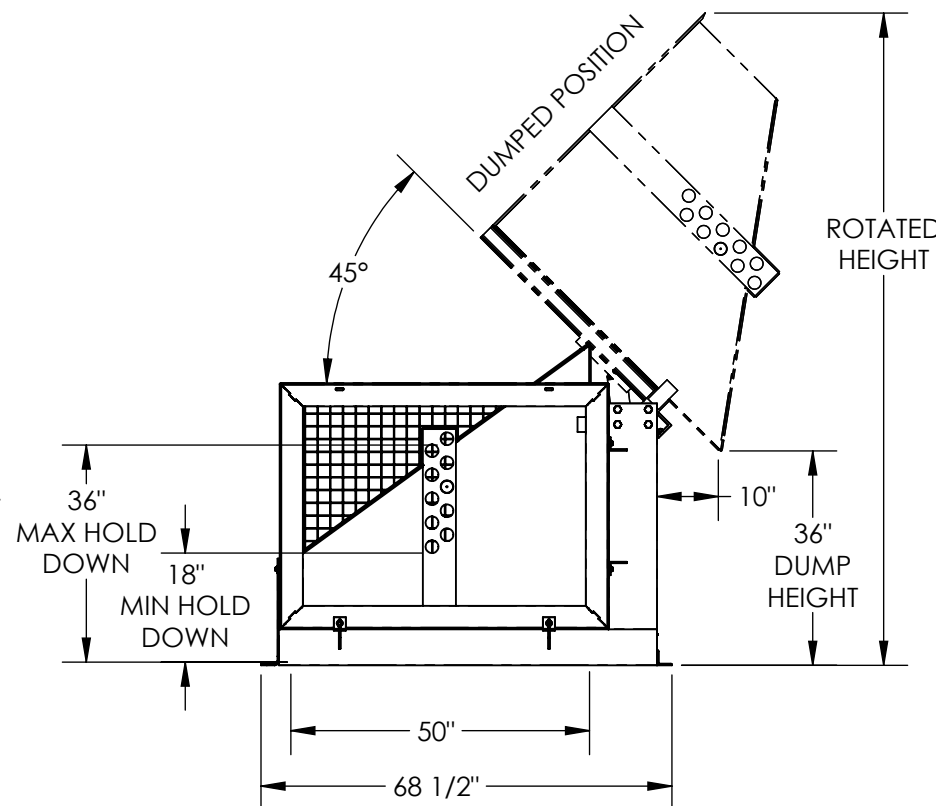
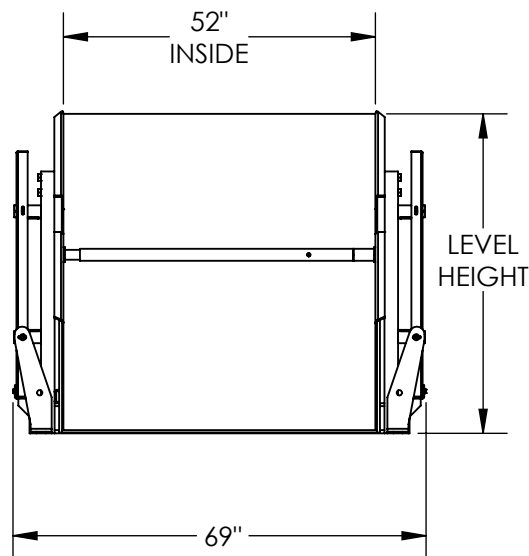


HYDRAULIC BOX DUMPERS - HBD-2-36

APPROX WEIGHT: 1614.70 lbs.
DOES NOT INCLUDE WEIGHT OF POWER OR PACKAGING!!!

*** ANY ADDITIONS, DELETIONS, OR OMISSIONS MUST BE CORRECTED ON THIS DRAWING AS THIS DRAWING WILL BE CONSIDERED ALL INCLUSIVE ***

ALL GRAPHICS PROVIDED ARE FOR REFERENCE ONLY. IF CERTAIN DIMENSIONS ARE CRITICAL PLEASE VERIFY THOSE DIMENSIONS WITH YOUR SALESPERSON



FOR INTERNAL USE ONLY PROJECT SIGN OFF	
SALES	
ENG.	
FAB.	
POWER	

NOTE: SINGLE PH. PLUG-IN UNITS WILL HAVE
APPROX 120 SEC DUMP / 33 SEC LOWER

PLEASE CIRCLE SPECIFICATIONS:

POWER	AC	* DC	* AIR/OIL
MOTOR VOLTAGE	115	208	230 460
DEDICATED CIRCUIT REQUIRED			
MOTOR PHASE	SINGLE	THREE	
CONTROL	HAND	* FOOT	
~ ALL BATTERY CHARGERS ARE 115V AC ~			
* BATTERY CHRG.	REMOTE	ON-BOARD	
* CHRG. INDICATOR	YES	NO	

* AVAILABLE AT ADDITIONAL COST

SPECIAL FEATURES NONE

STANDARD FEATURES

HYDRAULIC BOX DUMPER
MODEL NUMBER IS HBD-2-36
CHUTE IS 52" W X 50" L (USABLE)
DUMPER CAPACITY IS 2000 LBS.
DUMP HEIGHT IS 36"
HOLD DOWN WILL ACCEPT BOXES
18" TO 36" HIGH W/ HOLES EVERY 2"
FRAME WIDTH IS 69"
FRAME LENGTH IS 68 1/2"
LEVEL HEIGHT IS 53 1/2"
ROTATED HEIGHT IS 111"
DUMP ANGLE IS 45°
CHROME PLATED CYLINDER WITH
EMERGENCY STOP VELOCITY FUSE
WARNING: CHECK STATE AND LOCAL CODES!!
FRAME AND CHUTE DURABLE LIQUID PAINT BLUE FINISH
GUARDS AND HOLD DOWN BAR TOUGH BAKED IN POWDER COATED YELLOW FINISH

DIMENSION TOLERANCE $\pm 1/4"$

APPROVAL

I, THE UNDERSIGNED, AGREE THAT THE PRODUCT AS REPRESENTED SATISFIES DESIGN AND DIMENSION REQUIREMENTS. I ALSO ACKNOWLEDGE MY DUTY TO CONFIRM PRODUCT AND INSTALLATION COMPLIANCE WITH ALL APPLICABLE FEDERAL, STATE AND LOCAL REGULATIONS AND STANDARDS.

ANY MODIFIED UNITS ARE NON-RETURNABLE

[] As drawn [] As marked

Signed: _____ Date: _____

Printed Name: _____

LEAD TIME WILL START UPON RECEIPT OF SIGNED APPROVAL DRAWING

DISTRIBUTOR'S NAME:		P.O.#	X
VESTIL MANUFACTURING		W.O.#	X
DRAWN BY: CA	DATE: 09/22/2011	SALES:	X
REFERENCE: X	SCALE: 1:32	FILE NAME:	
QUOTED LEAD TIME: X	QUOTE # X		34-007-004