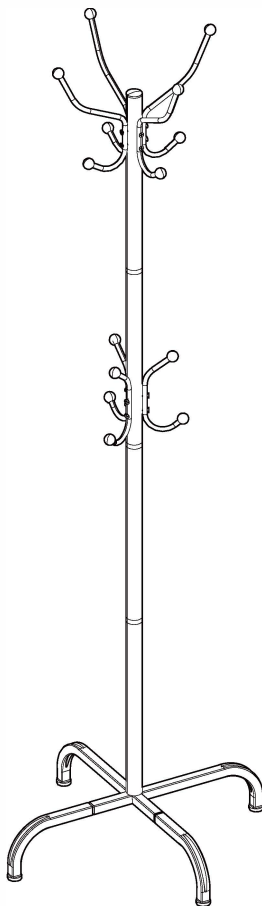
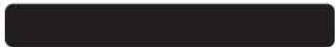


INSTRUCTION MANUAL

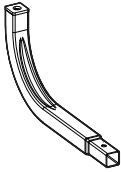


Coat Rack

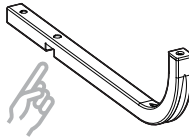
Important Safety Information

- Please carefully read all instructions before attempting installation. If you have any questions or concerns, please call technical support or email customer service.
- CAUTION: Avoid potential injuries and property damage!
- DO NOT use this product for any purpose that is NOT explicitly specified in this manual. We are NOT liable for damage or injury caused by improper mounting, incorrect assembly or inappropriate use.
- WARNING: This product contains small parts that may pose a choking hazard.
- Before starting assembly, verify all parts are included and undamaged. DO NOT use damaged or defective parts. If you require replacement parts, please call technical support or email customer service.
- NOTE: NOT all hardware included in this package will be used.

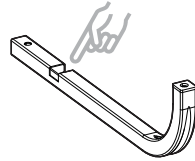
Supplied Parts and Hardware



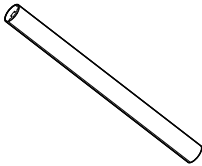
Leg
[01] x 2



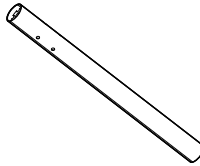
Leg
[02] x 1



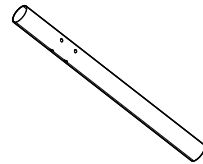
Leg
[03] x 1



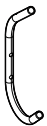
Bottom Pole
[04] x 2



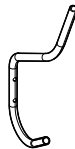
Middle Pole
[05] x 1



Top Pole
[06] x 1



Short Hook
[07] x 3



Long Hook
[08] x 4



M6 x 10mm
Bolt
[A] x 2



$\phi 6 \times \phi 16 \times 1.5$
Washer
[B] x 2



Foot Pad
[C] x 4



M8 x 40mm
Bolt
[D] x 1



$\phi 8 \times \phi 18 \times 1.5$
Washer
[E] x 1



M8 x 55mm
Bolt
[F] x 3



Pole Connector
[G] x 3



End Cap
[H] x 1



Decorative Ball
[I] x 14



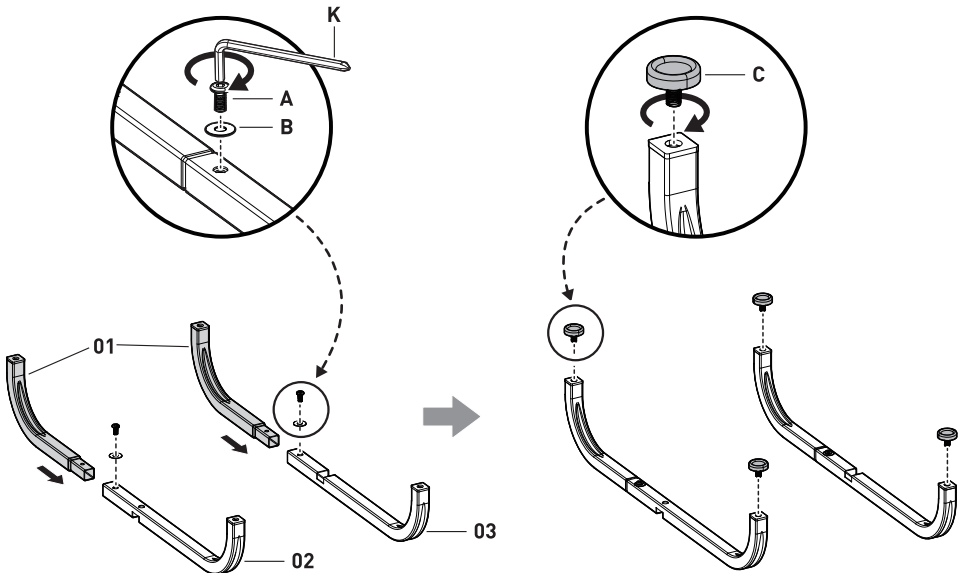
M5 x 20mm
Bolt
[J] x 14

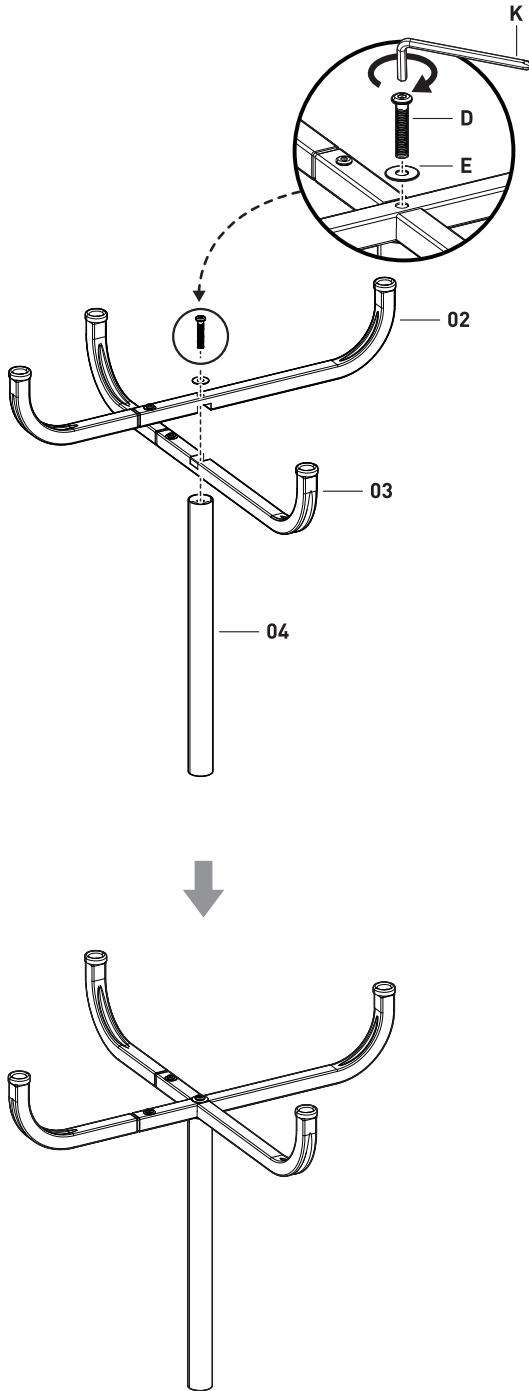


Allen Key
[K] x 1

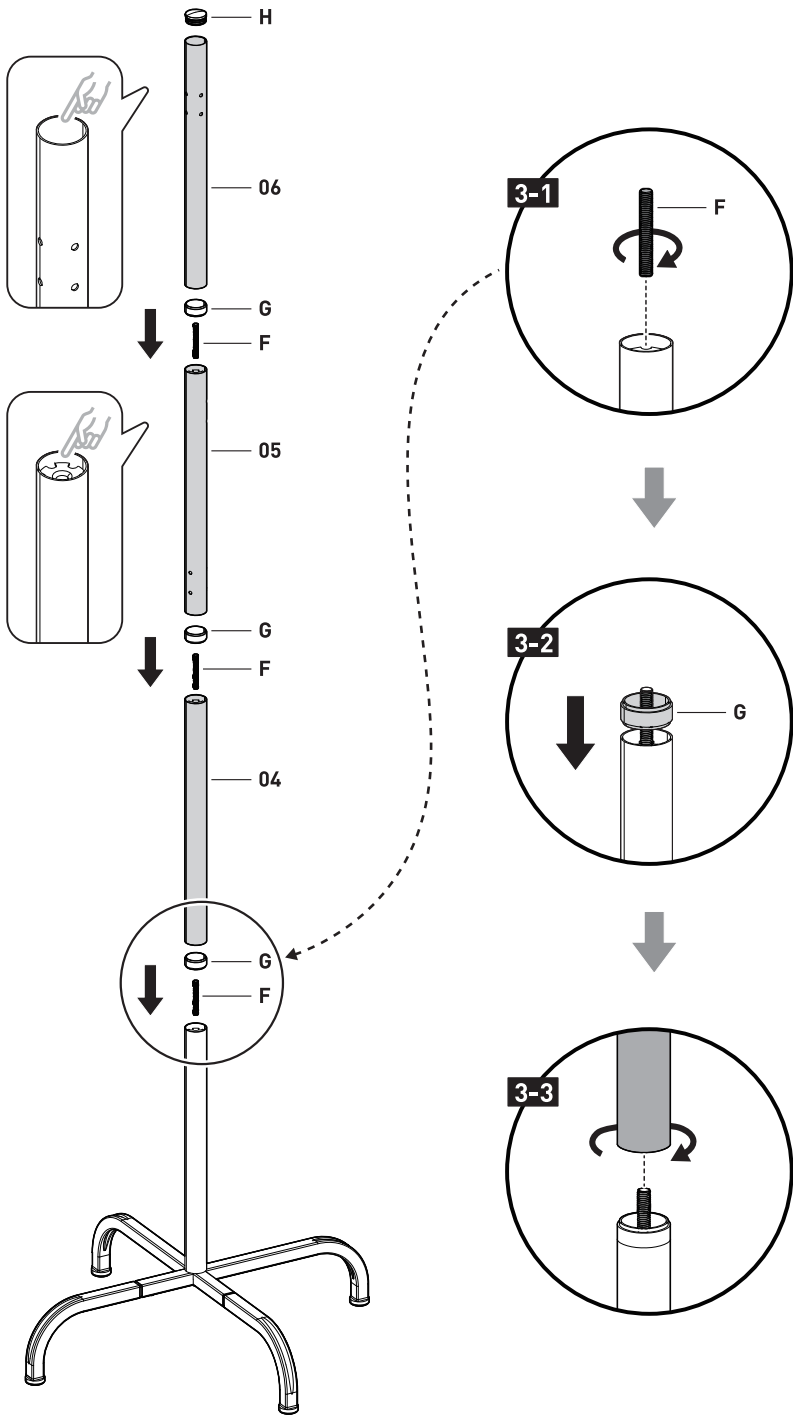
Installation

1

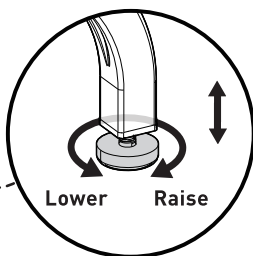
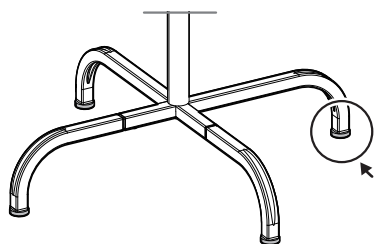
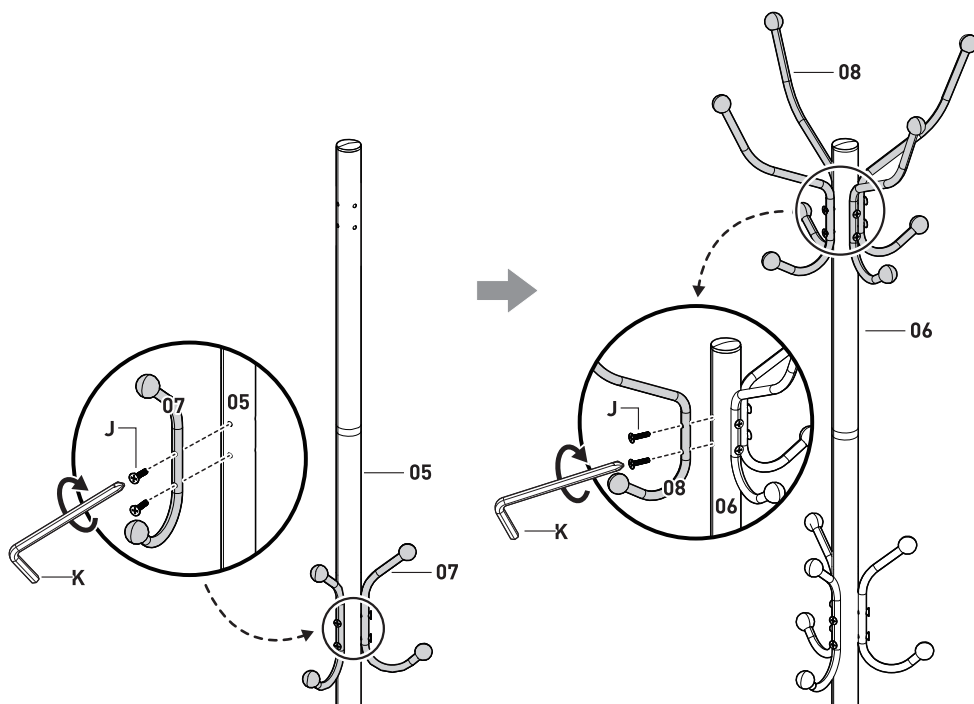
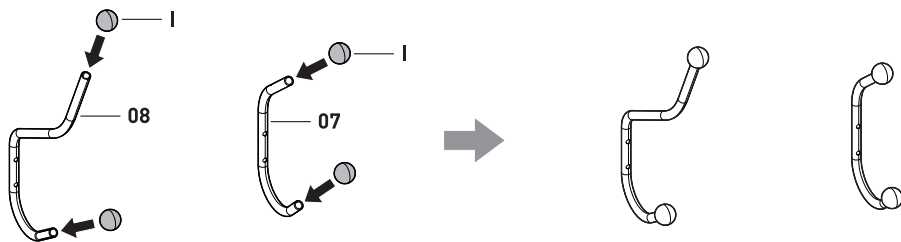




3



4



NOTE: If the coat rack is not level on the ground, adjust the foot pads to raise or lower each leg.