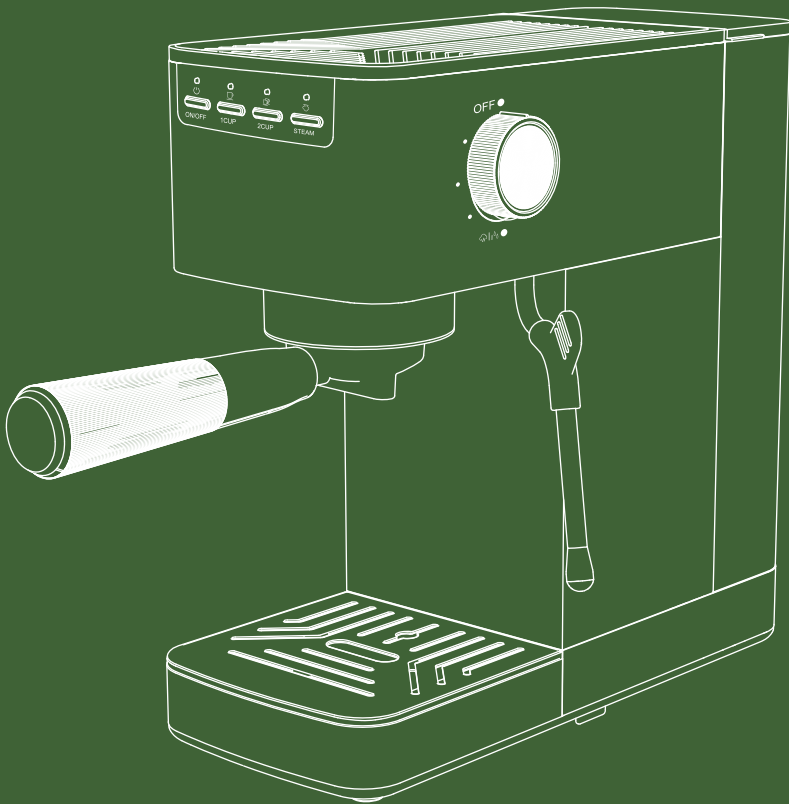




# Maestri House

## MHCM03

# Espresso Machine Manual



Model: CM5432 -UL

# CONTENTS

<b>Getting Started</b>	<b>2</b>
<b>Product List</b>	<b>2</b>
<b>Parts Overview</b>	<b>3</b>
<b>First-time Use Precautions</b>	<b>4</b>
<b>Product Specifications</b>	<b>5</b>
<b>Descaling &amp; Maintenance</b>	<b>6</b>
<b>Automatic Power - off Function</b>	<b>7</b>
<b>Setup</b>	<b>7</b>
<b>Cleaning and Maintenance</b>	<b>8</b>
<b>Precautions</b>	<b>8</b>
<b>Troubleshooting</b>	<b>9</b>

Your Maestri House product comes with a **one - year warranty** starting from the date of purchase.

If you have any questions about the product during use, please contact our customer support team in the following ways:

 [support@maestrihouse.com](mailto:support@maestrihouse.com)

 [www.maestrihouse.com](http://www.maestrihouse.com)

 **+1 877-968-4009**

Mon-Fri: 9AM - 1PM; 2PM - 6PM

\*U.S. Eastern Time, Closed on Holidays

## Getting Started

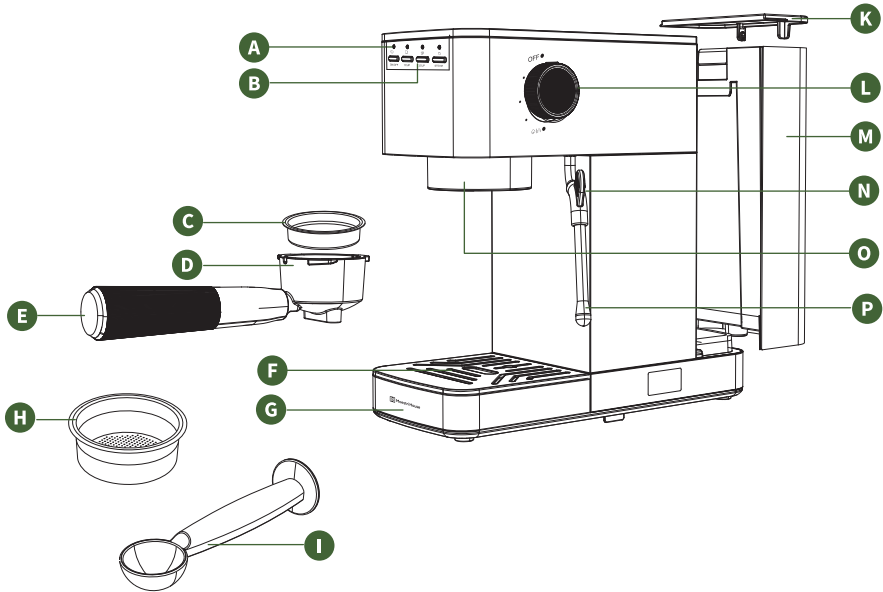
**Unboxing:** Carefully remove the espresso machine and all accessories. Retain all packaging materials for future reference.

**Pre-Use Checklist:** Verify all components are included (see Product List section). Read this manual thoroughly before operation.

## Product List

- ▶ Coffee machine \* 1
- ▶ Portafilter \* 1
- ▶ Single-shot portafilter basket \* 1
- ▶ Double-shot portafilter basket \* 1
- ▶ Coffee scoop \* 1

## Parts Overview



**A** Indicator light

**B** Control panel

**C** Single-shot portafilter basket

**D** Filter

**E** Portafilter

**F** Drip tray

**G** Drip pan

**H** Double-shot portafilter basket

**I** Coffee scoop

**K** Water tank lid

**L** Steam knob

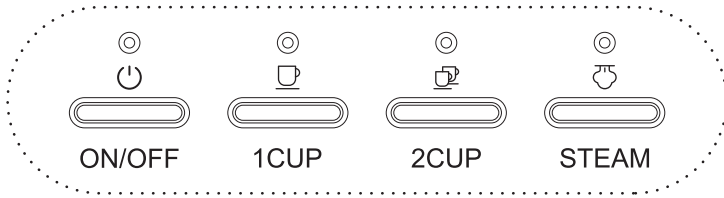
**M** Water tank

**N** Steam handle

**O** Group head

**P** Steam wand

## Introduction to Control Panel:



**Power Button:** Turn the machine ON/OFF.

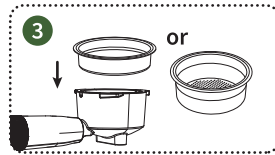
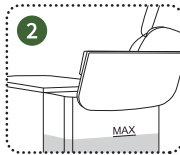
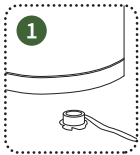
**1CUP Button:** Start /Stop brew a single shot.

**2CUP Button:** Start /Stop brew a double shot.

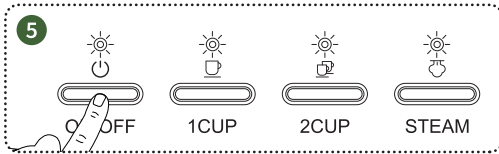
**STEAM Button:** Press to enter /exit steam mode.

## First-time Use Precautions

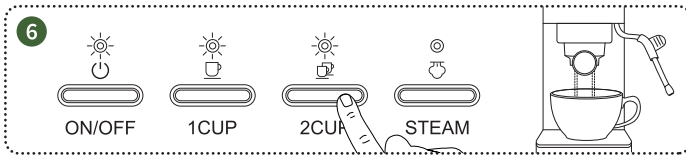
To brew a delicious cup of coffee, please flush the coffee machine following these steps:



- ① Remove the red silicone plug at the bottom of the water tank.
- ② Fill the water tank with purified water. Make sure the water level doesn't exceed the MAX mark on the tank, then put the tank lid back on.
- ③ Choose either a single - shot or double - shot portafilter basket and install it in the filter. Then, attach the portafilter handle to the coffee machine (don't put any coffee grounds in the filter).
- ④ Place an espresso cup on the drip tray and ensure the steam knob is turned off.



⑤ Press the power switch. All the indicator lights will flash, and the machine will start pre - heating.



⑥ When the power, single-cup, and double-cup indicator lights stay steadily lit, the preheating is finished. Press the double-cup button. Wait for a moment, and hot water will start flowing out. The first cycle is for flushing the machine and activating the heating system.

⑦ When the machine automatically stops pumping water, after thorough cleaning, you can start making coffee.

**Note:** During the first use, the machine may produce relatively loud noise and vibrations. This is a normal phenomenon. The coffee machine is releasing the air inside the equipment. As you use it more often, the noise will gradually decrease.

## Product Specifications

Product model	CM5432-UL
Input voltage	120VAC 60HZ
Water tank capacity	43.96OZ/1300ML
Output power	1350W MAX
Product dimensions	409*130*297mm
Product weight	3.8KG

## Descaling & Maintenance

**When to descale:** After 400 brew cycles (indicator lights flash 5 times).

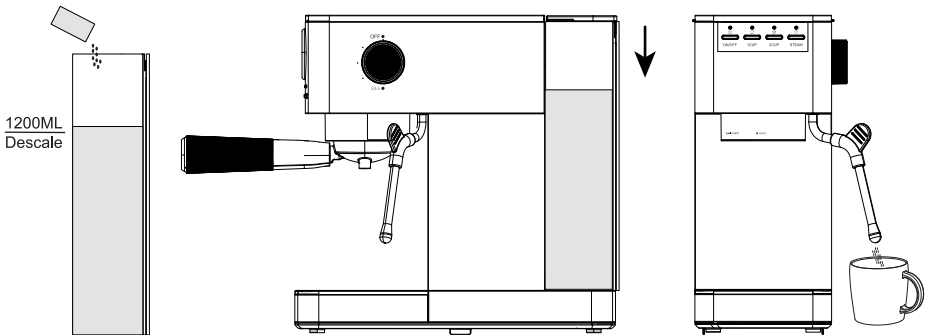
Here's what happens when your appliance needs a good cleaning:  
Press the 1 Cup or 2 Cup button, the Power, 1 Cup, and 2 Cup lights will all blink 5 times together.

### Steps:

1. Mix **4:1 water-to-descaling agent** (or 100:3 water-to-citric acid).
2. Fill the tank, press **2 CUP**, let sit for 5 minutes, then repeat three times.

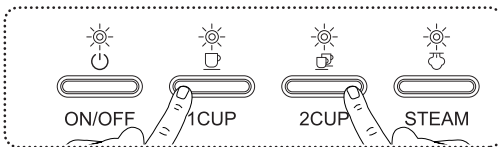
After all the above actions are completed, the descaling process is finished.

**Note:** Please use household descaling agent. Citric acid can also be used to replace the descaling agent (100 parts of water and 3 parts of citric acid).



3. During the descaling process, the coffee machine needs to be stopped for 3 minutes each time to allow it to cool down and prevent overheating protection.

**Reset reminders:** Hold **1 CUP + 2 CUP** for 3 seconds until lights flash.



**Important Note:** Only Manual Descaling Clears the Flashing Alert!

The flashing light alarm will keep showing up every time you use the appliance until you manually descale it.

## Automatic Power - off Function

1. After powering on, if there is no operation within 29 minutes, the device will automatically shut off.
2. After powering on, if the hot water function is used, and there is no operation after the water pump pumps out approximately 215ML of water, the water pump will automatically stop working to prevent accidents.
3. After powering on, if steam is continuously released and there is no operation after 180 seconds of operation, the steam wand will automatically stop to avoid accidents.

## Setup

### Adjust the extraction volume

#### Extraction volume for one cup

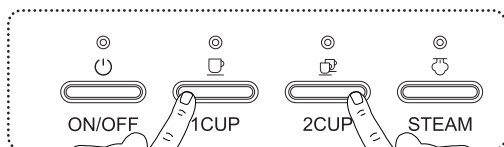
Press and hold the "1CUP" button for 3 seconds to enter the setting mode for the dispensing volume. Then press the "1CUP" button again, and the coffee extraction will start. The "1CUP" indicator light will flash. Press the "1CUP" button again within 10 - 25 seconds according to the desired coffee volume, and the coffee extraction will stop. At this point, the setting of the extraction volume for one cup is completed, and the record is saved.

#### Extraction volume for two cups

Press and hold the "2CUP" button for 3 seconds to enter the setting mode for the dispensing volume. Then press the "2CUP" button again, and the coffee extraction will start. The "2CUP" indicator light will flash. Press the "2CUP" button again within 10 - 25 seconds according to the desired coffee volume, and the coffee extraction will stop. At this point, the setting of the extraction volume for two cups is completed, and the record is saved.

#### Restore factory settings

Press and hold the "1CUP" and "2CUP" buttons simultaneously for 3 seconds to restore the extraction volume to the factory settings.



## Cleaning and Maintenance

1. Before cleaning, turn off the power and unplug the coffee machine to let it cool down completely.
2. Clean the exterior of the coffee machine with a sponge. Regularly clean the water tank and the drip tray, and then dry them.  
Note: Do not immerse the exterior in water for cleaning. Do not use alcohol or solvents for cleaning.
3. Clean the filter and the portafilter. Remove them, empty the coffee grounds inside, then clean them with a cleaning agent, and finally rinse them thoroughly with clean water.
4. Wash all the accessories in clean water and dry them thoroughly.

## Precautions

- Please keep all instruction documents for future reference.
- Before using the electrical appliance, please check whether the voltage you use matches the voltage specified in the product manual.
- Place the machine on a flat surface or table. Don't let the power cord hang over the edge of the table or counter.
- Be careful when using the machine because there is a risk of scalding from the steam.
- Do not touch any hot surfaces of the machine (including the steam wand).
- Do not operate the coffee machine when the water tank is empty to avoid damage.
- There is a risk of scalding if you remove the water tank during the coffee extraction process.
- Do not immerse the power cord or plug in water or other liquids.
- Do not place the coffee machine on a hot surface or near an open flame.
- This device is not suitable for children or individuals with physical, sensory, or intellectual impairments, or those lacking experience and knowledge.
- It is strictly prohibited to use this device outdoors.
- If the electrical appliance malfunctions or is damaged, do not repair it by yourself. Please contact us first.

## Troubleshooting

### The coffee is extracted too quickly.

Reason	Solution
The brewing system is not preheated.	Preheat the brewing system and coffee cups.

### The coffee is extracted too quickly.

Reason	Solution
<ol style="list-style-type: none"><li>1. The coffee grounds are ground too coarsely.</li><li>2. There is too little coffee grounds.</li><li>3. The coffee is tamped too lightly.</li></ol>	<ol style="list-style-type: none"><li>1. Choose a finer grind size.</li><li>2. Increase the amount of coffee grounds.</li><li>3. Increase the tamping pressure.</li></ol>

### The coffee is extracted too slowly.

Reason	Solution
<ol style="list-style-type: none"><li>1. The coffee grounds are ground too finely.</li><li>2. There is too much coffee grounds.</li><li>3. The coffee is tamped too heavily.</li></ol>	<ol style="list-style-type: none"><li>1. Select a coarser grind size.</li><li>2. Reduce the amount of coffee grounds.</li><li>3. Decrease the tamping pressure.</li></ol>

### Coffee without oils.

Reason	Solution
<ol style="list-style-type: none"><li>1. Neither the coffee beans nor the pre-ground coffee powder is fresh.</li><li>2. The portafilter filter basket may be clogged.</li></ol>	<ol style="list-style-type: none"><li>1. Use freshly roasted coffee beans with a roasting date and consume them within 5 - 20 days after that date. If using pre-ground coffee, use it within one week after grinding.</li><li>2. Use cleaning tools to clear the blocked holes.</li></ol>

### The coffee machine is leaking water from the bottom.

Reason	Solution
<ol style="list-style-type: none"><li>1. There is too much water accumulated in the drip pan.</li><li>2. The coffee machine is malfunctioning.</li></ol>	<ol style="list-style-type: none"><li>1. Please clean the drip pan.</li><li>2. Please contact us.</li></ol>

**! Water is leaking from the outside of the brew head filter.**

Reason	Solution
1. There is some coffee powder on the edge of the filter. 2. The portafilter handle is not locked tightly.	1. Remove the excess coffee powder. 2. Lock the portafilter handle tightly.

**! The steam wand keeps dripping water.**

Reason	Solution
The steam button and steam knob are not turned off.	Turn off the steam button and the steam knob.

**! There is an acidic taste in the coffee.**

Reason	Solution
The coffee powder has been stored in a place with high temperature and high humidity for a long time, causing it to go bad.	Please use fresh coffee powder, or store unused coffee in an airtight container in a cool and dry place.

**! The steam wand makes a shrill noise when frothing milk, and the milk fails to form bubbles.**

Reason	Solution
1. The method of frothing milk is incorrect. 2. The container for holding milk is either too large or has an inappropriate shape. 3. The milk you used has too low a protein content.	1. Refer to Item 4 of the Quick Start Guide. 2. Use a milk frothing pitcher with a capacity of 330 - 350 ml. 3. Select refrigerated pure milk with a protein content of no less than 3.3%.

**! All the indicator lights are flashing slowly at the same time.**

Reason	Solution
The machine preheats when it is turned on.	The flashing stops after the preheating is completed.

**⚠ The power indicator light and the single - cup indicator light are flashing rapidly.**

Reason	Solution
The steam knob is not turned off.	Reset the knob to the closed position.

**⚠ The steam indicator light is flashing rapidly.**

Reason	Solution
The steam has been used for 180 seconds, but the knob is not turned off.	Reset the knob to the off position.

**⚠ The power indicator light, single - cup indicator light, and double - cup indicator light flash five times simultaneously.**

Reason	Solution
Descaling prompt.	After the descaling operation, clear the descaling reminder.

**⚠ The steam is weak.**

Reason	Solution
<ol style="list-style-type: none"><li>1. The machine has not reached the operating temperature.</li><li>2. The water tank is short of water.</li><li>3. The water tank is not fully inserted and locked in place.</li><li>4. The machine needs to be cleaned and descaled.</li><li>5. The steam wand is blocked or almost blocked.</li></ol>	<ol style="list-style-type: none"><li>1. Preheat the machine to operating temperature.</li><li>2. Fill the water tank.</li><li>3. Ensure the water tank is locked.</li><li>4. Conduct descaling.</li><li>5. Clean the steam wand.</li></ol>

工艺：150g铜版纸 四色印刷  
尺寸：120\*180mm