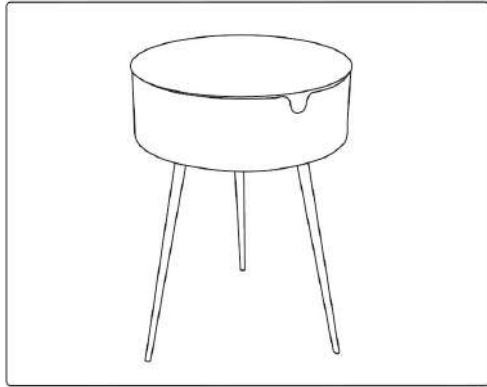


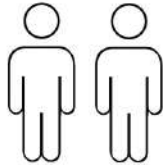
ASSEMBLY INSTRUCTIONS



+ Do Not Use Power Tools



+ Suggested Adults



NOTE:

- 1 Read instructions cover to cover.
- 2 Save all packaging until assembly is completed.

1 IMPORTANT SAFETY INFORMATION

Do not assemble the product if the following part arrives damaged:

Part # 1 Table Top, Part# 2 Table Legs

CAUTION :DO NOT place hot objects (100°F or more) directly on the Surface.

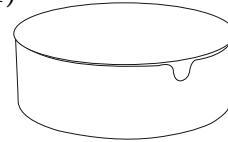
2 IMPORTANT ASSEMBLY INFORMATION

Assembly Step Turn Part#2 Clockwise to to connect to part#1.

Assembly Step Repeat same step to assemble remaining part#2.

+ Parts Included

- ① TOP
(No. of pcs 1)



- ② Legs
(No. of pcs 3)



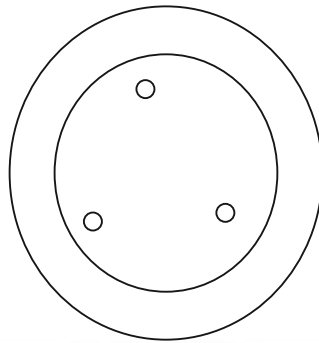
+ Hardware Included

No Hardware Required for Assembly.

ASSEMBLY INSTRUCTIONS

1

Part#1 Table TOP



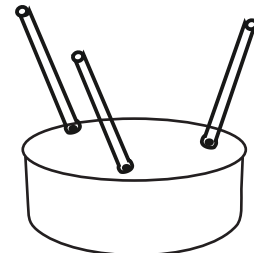
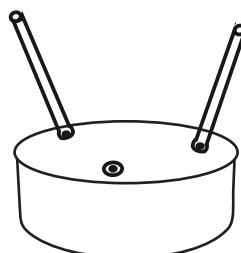
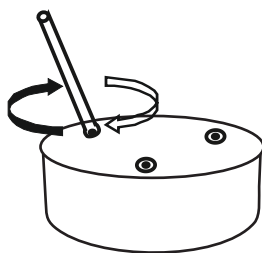
2

Part#2 Table Legs



3

Tighten Leg part#2 turning Clockwise, matching A-A, B-B, C-C.



4

