

# MINNEAPOLIS TOUCHSCREEN Z- WAVE DEADBOLT

ELECTRONIC DEADBOLT WITH BUILT-IN Z WAVE SMART TECHNOLOGY



## SPEI

### STYLE

|                       |                |
|-----------------------|----------------|
| BACKSET SIZE          | Adjustable     |
| FEATURES MASTERCODE   | Yes            |
| INTERIOR LOCKING TYPE | Turn Piece     |
| BATTERY TYPE REQUIRED | 4 AA, included |
| # OF CODES            | 30.0           |
| # OF BUTTONS          | 12.0           |

# MINNEAPOLIS TOUCHSCREEN Z- WAVE DEADBOLT

ELECTRONIC DEADBOLT WITH BUILT-IN Z WAVE SMART TECHNOLOGY

Model Number:  
8225.402.ZW

SEE BELOW FOR ADDITIONAL FUNCTIONS

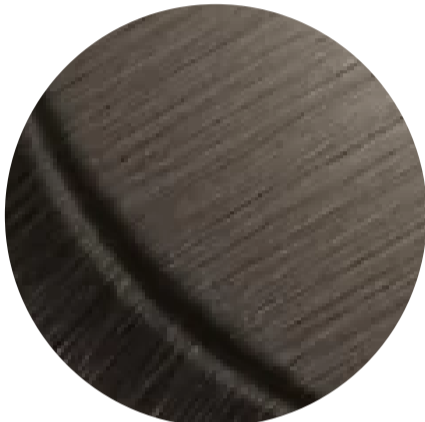
## Key Features

- ✓ Added detailing brings age-worn dimension to the lustrous texture of Oil-Rubbed Bronze.

## FINISHES OPTIONS



Lifetime (PVD) Satin Nickel - 056



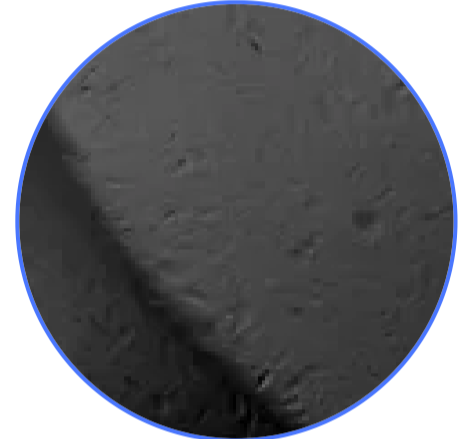
Lifetime (PVD) Graphite Nickel - 076



Lifetime (PVD) Polished Nickel - 055



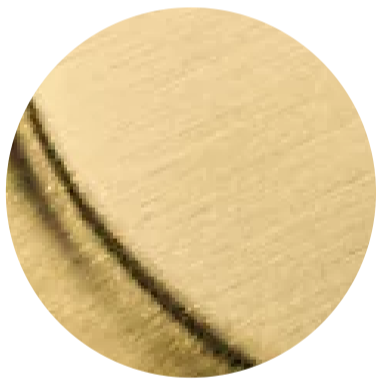
Polished Chrome - 260



Distressed Oil Rubbed Bronze - 402



Lifetime (PVD) Polished Brass - 003



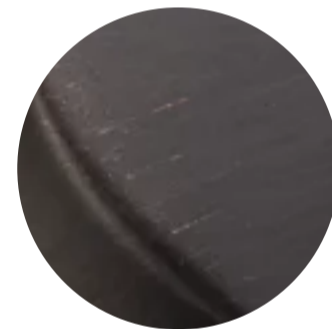
Lifetime (PVD) Satin Brass - 044



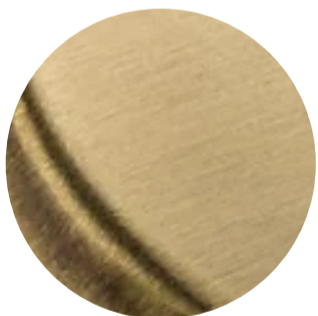
Satin Black - 190



Oil Rubbed Bronze - 102



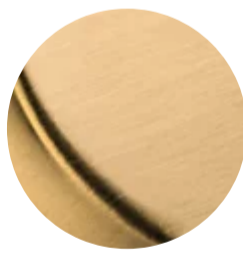
Venetian Bronze - 112, 11P



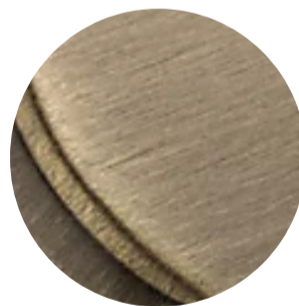
Satin Brass & Brown - 060



Non-lacquered Brass - 031



Vintage Brass - 033



Satin Brass & Black - 050

## SPECIFICATIONS

|                       |                |
|-----------------------|----------------|
| STYLE                 | Contemporary   |
| BACKSET SIZE          | Adjustable     |
| FEATURES MASTERCODE   | Yes            |
| INTERIOR LOCKING TYPE | Turn Piece     |
| BATTERY TYPE REQUIRED | 4 AA, included |
| # OF CODES            | 30.0           |
| # OF BUTTONS          | 12.0           |