

CERAMIC TABLE

■Specification

Voltage: 110-130V

Wattage: 60 Watt Max

Material: Ceramic

Color: off white/brown/gr

Lamp holder: E26

Light bulb information:

Wire length: 70.9 in/180

Distance between switch

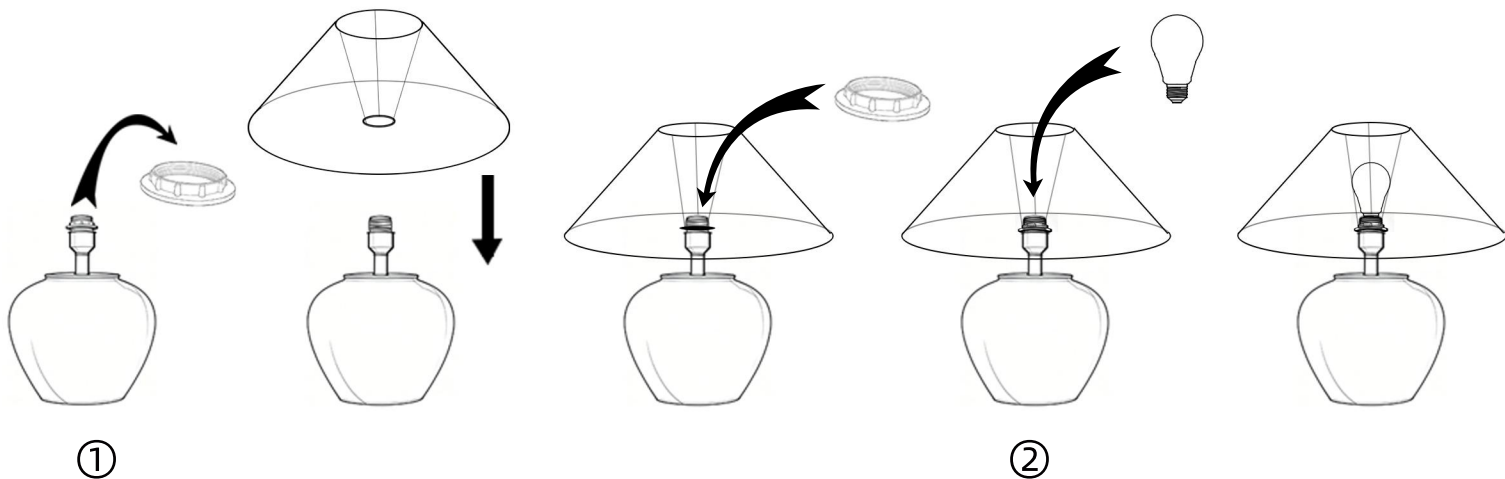
Scope of use: I

■Package Include

1 x Lamps h a d e

1 x b u l b

■Easy Installation



1. R e m o v e t h e s c r e w r i
2. P l a c e t h e l a m p s h a d e
3. T i g h t e n t h e s c r e w r
4. T w i s t o n t h e l i g h t

■ Attention

- 1.If you want to change the 2700K vintage Led bulb included, incandescent light bulbs less than 60W are greatly recommended. Not all Led bulbs are fully compatible with the dimmer system of the lamp, so it may cause to flicker or lose dimming function with other Led bulbs.
- 2.The bulb will increase the brightness when it is reaching its lifespan or has partial short-circuit. At that moment, please switch off, change a bulb and use it as you would normally.
- 3.Please shut off the power and unplug it before you screw in a new bulb.
- 4.Don't put the lamp in overheating working condition or cast it into fire.