

LT-909MLH Infrared Sauna Installation & Owner's Manual

Please read this entire manual thoroughly before proceeding with the assembly.

CONCENTRATE ON PROFESSIONAL SAUNA



PRECAUTIONS AND INSTRUCTION

ATTENTION

Please read all instructions thoroughly before using.

Serious injury may result if ignore the following warning and instruction.

Basic precautions should always be followed when using this electrical equipment.

DANGER

To avoid the risk of causing burns, fire, electric shock, or other injuries:

- Connect the power cord to a properly grounded outlet.
- Using only for its intended use as described in this manual.
- Don't use accessories not recommended by the manufacturer.
- Please disconnect the power after using.
- Please keep the electrical cord away from heated surfaces.
- If the sauna is faulty, the supply cord or plug is damaged, please stop using it immediately.

WARNINGS

- Don't stay longer than **one hour**.
- Don't put the sauna on a **humid** environment.
- Don't touch the heater directly with hands or body for a long time.
- Don't use any sharp tools on or near the heaters (severe damage may result).
- Placing the sauna on a **flat** surface.
- Unauthorized disassembly of the sauna is **prohibited**.
- People with health problems should consult a physician for prior to using the sauna. (Including acute diseases, malignant tumors, high blood pressure, heart disease, allergic dermatitis, pregnancy, etc.)
- This product is not intended for use by person (including children) with reduced physical, sensory or mental capabilities, or lack of adequate experience

Step 1: Position the Floor Panel

Place the floor panel on a flat surface. Before assembly, make sure the floor is flat so that you can maintain a comfortable subsequent installation. (image1)



image 1



image 2

Step 2: Position the Right Panel

Lift the right panel into position wedging the bottom of the panel into the channel in the floor panel, you can gently rest the right panel against the wall of your home. . (image 2)

Step 3: Position the Rear Panel

Place the Rear panel into the slot of the floor panel and push it towards the right panel. Check whether the hooks of the fasteners are up or down, and the fasteners are connected together as shown. (image 3)



image 3

CONTROL PANEL INSTRUCTION

Pre-set Time
Up to 60Mins

°C/°F switching

Pre-set Temps
Up to 140°F



Reading Lamps
On/Off

Power On/Off

Foot Heating Panel
On/Off

SPECIFICATIONS

Product Name	Far Infrared Sauna
Model	LT-909MLH
Dimensions	36.6*28.7*63 in
Voltage	110-120VAC
Plug Type	15 Amps
Wattage	1050W
Number of Heaters	6 pcs
Raw Material	Hemlock
Location	Indoor

knowledge, unless they have been given supervision or instruction concerning use of the appliance by a person responsible for their safety.

- Using a sauna after taking alcohol, drugs, or medication can **lead to hyperthermia** and increase the risk of death.
- If you are feeling uncomfortable, exit the sauna immediately and consult a doctor.
- Children should be supervised to ensure that they do not play with the appliance.

HYPERTHERMIA

Prolonged exposure in the sauna may cause hyperthermia. Hyperthermia occurs when body's core temperature rises above 98.6F. Symptoms of hyperthermia include a rise in body temperature, dizziness, lethargy, drowsiness, and fainting. The effects of hyperthermia may include:

- a) Failure to perceive heat / Unawareness of impending heat
- b) Failure to recognize the need to exit the sauna
- c) Fetal damage in pregnant women
- d) Physical inability to exit the sauna
- e) Unconsciousness

Installation Guide

Each panel is heavy, especially the top panel. Be careful to avoid injury when installing. This sauna requires at least 2 adults to complete assembly. The panels should be install in the following order:

Floor Panel → Right Panel → Rear Panel → Front Panel → Bench Support Panel → Bench Surface Panel → Left Panel → Ceiling Panel

Step 6: Place the Bench Surface Panel

Place the bench surface panel (image8), and please make sure to always install the Bench Surface panel before installing the left panel, otherwise it will not fit inside due to space limitations.



image 8

Step 7: Place the Left & Ceiling Panel

Place the left panel into the slot of the floor panel and push it towards the side panels (image 9). Then lay the Ceiling Panel on top of the sauna. Make sure all panels are in the slot of the ceiling panel (image 10).



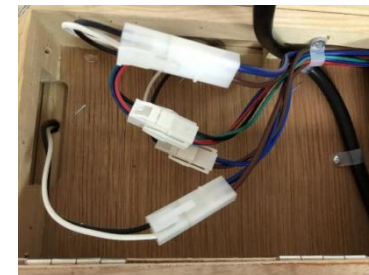
image 9



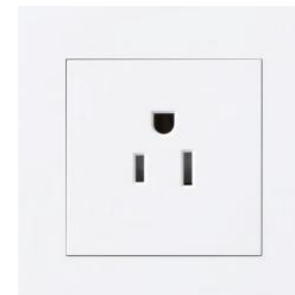
image 10

Step 8: Connect the wires

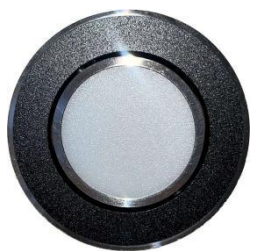
Make sure that all wires on the side panel pass through the holes. Finally, connect all the wires in the ceiling panel.



Congratulations! Installation completed! Plug in and power on to enjoy your sauna!



Other Functions



Reading lamp



Bluetooth



Vent

Common Problems

Note: The rising temperature of the sauna room is affected by the surrounding environment. The most suitable temperature for use is 48 °C/118 °F.

Note: If the following problems occur, please check the looseness between the corresponding connecting line and the connecting port of the host box

1. The reading light or color light flashes
2. Any heating plate is not heated
3. The control panel does not work
4. Bluetooth audio does not work



image 4

Step 4: Position the Front Side Panel

Place the front panel into the slot of the floor panel and push it towards the right panel. Please check if there is almost no visible gap between the outside and the inside of the sauna, then it is already fixed. (image 4)

Step 5: Place the Bench Surface Panel

Place the Bench Support panel (image5&6) and connect the wires behind (image7). Each two wires have corresponding unique interface shape, hear a click to indicate that the connection is completed.



image 5

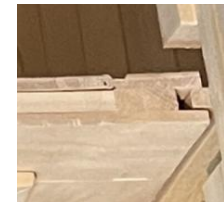


image 6



image 7