


# Installation Instruction

## 1. Hardware and parts list:

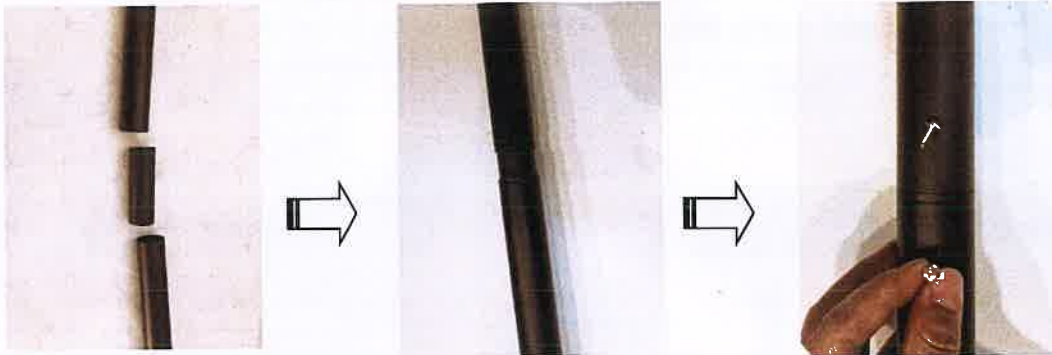
NO.	Item	Photo	QTY	NO.	Item	Photo	QTY
1	Base Plate		1pc	2	Support Leg		1pc
3	Middle rail		1pc	4	Upper rail		1pc
5	Aluminum connector		2pcs	6	Mounting screws		4pcs
7	Screws		8pcs	8	Acorn nuts		4pcs
9	Plastic Connect Part		1pc	10	Long screw		6pcs

## 2. Installation Steps:

STEP1, Attach base plate to support leg with 4 mounting screws and nuts.



**STEP2, Use 1pc Aluminum connector to connect the middle rail and support leg. Then tighten 4pcs screws on the pilot holes.**



**STEP3, Same as STEP2, Use another 1pc Aluminum connector (with an adjustable button) to connect the upper rail and middle rail. Then tighten 2pcs screws on the pilot holes.**



**STEP4, Slide the base plate under the spa in your desired position, and then you can adjust the upper rail with adjustable button when you use it.**

**STEP5, Use the Plastic Connect Part(9) to attach the Handrail to the panel with 6pcs Long screws.**

