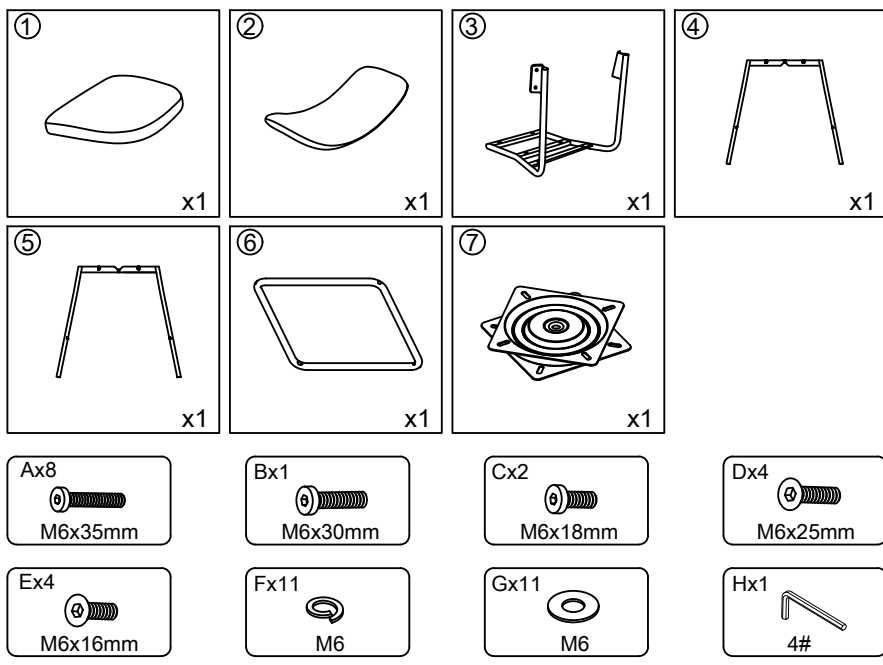
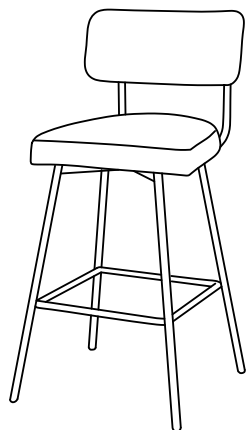


ASSEMBLY INSTRUCTIONS

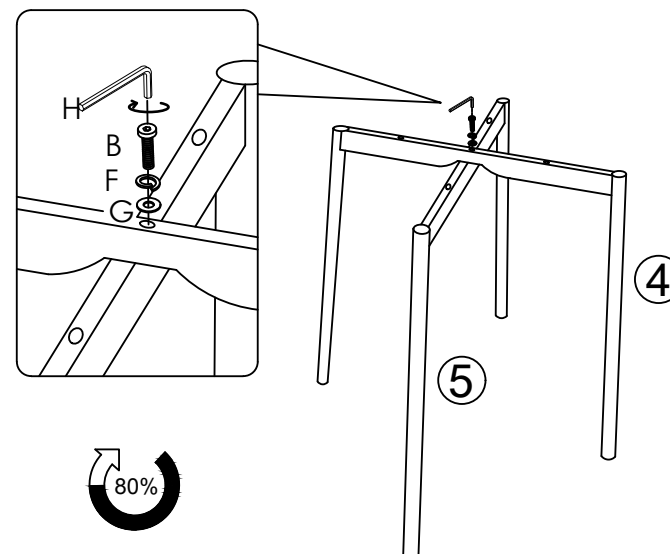
Counter & Bar Height Swivel



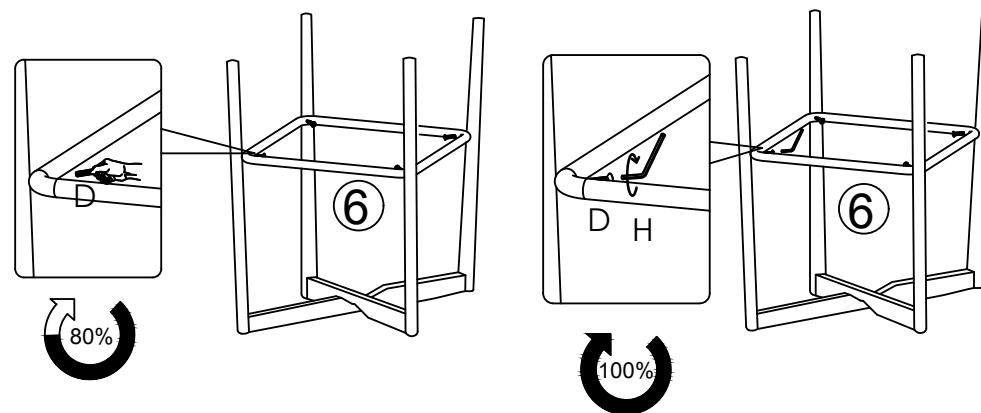
Please read through the instructions below to familiarize yourself with the parts and steps before assembly.

Note: Do NOT use power tools for assembly

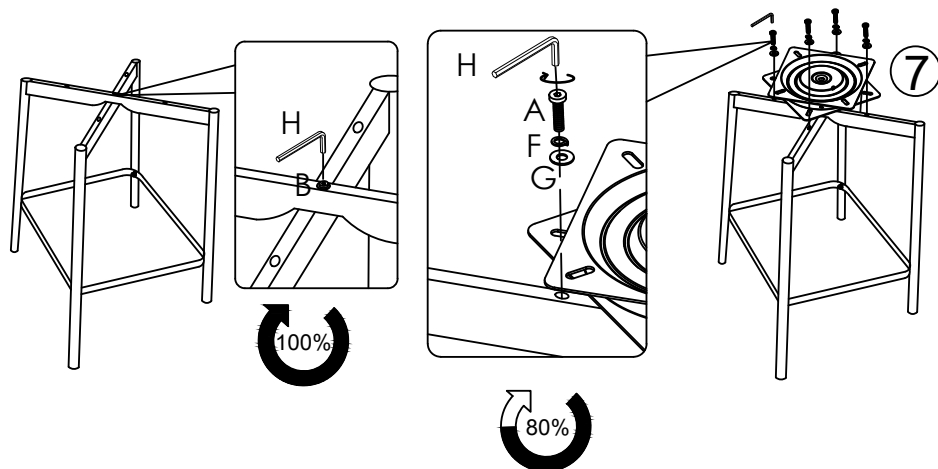
- 1 Unpack and place seat (1), back (2), backrest (3), legs (4&5), foot rest (6) and swivel plate (7) on a clean surface.
Attach leg (4) to leg (5), using bolt (B), lock washer (F), flat washer (G) and allen wrench (H).
Note: Do not fully tighten yet.



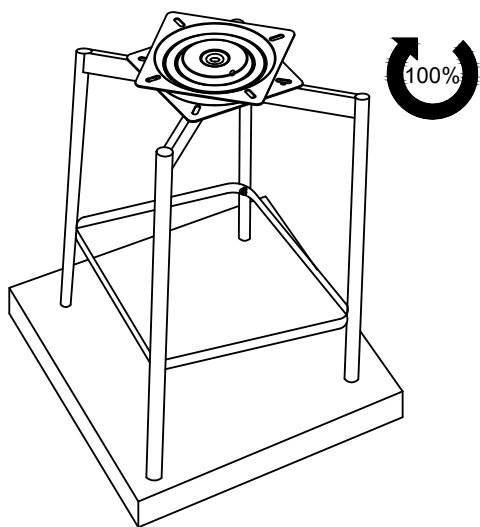
- 2 Loosely attach the bolts (D) one by one and **keep them loose. Do not fully tighten.** After loosely attach the first bolt, move on to the diagonal bolt. After all 4 bolts are attached, use allen wrench (H) to tighten.



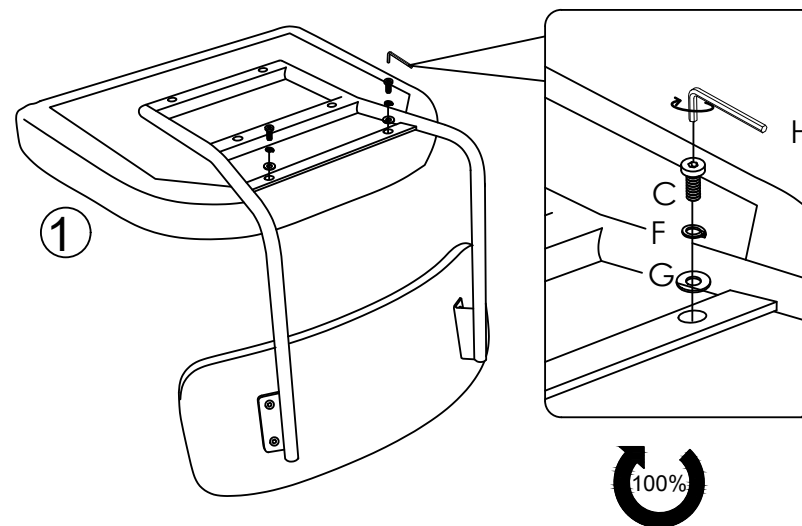
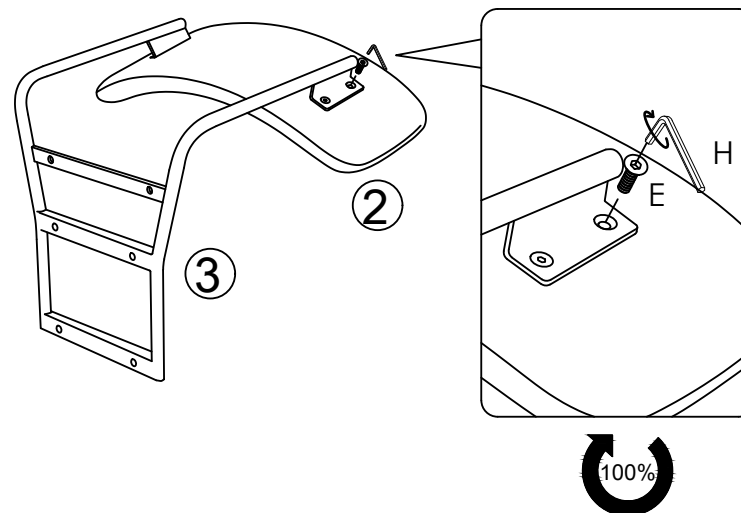
- 3** Fully tighten bolt (B) in step 1 with allen wrench (H). Then attach swivel plate (7) to assembled legs in step 2, using bolts (A), lock washers (F), flat washers (G) and allen wrench (H).
Note: Do not fully tighten yet.



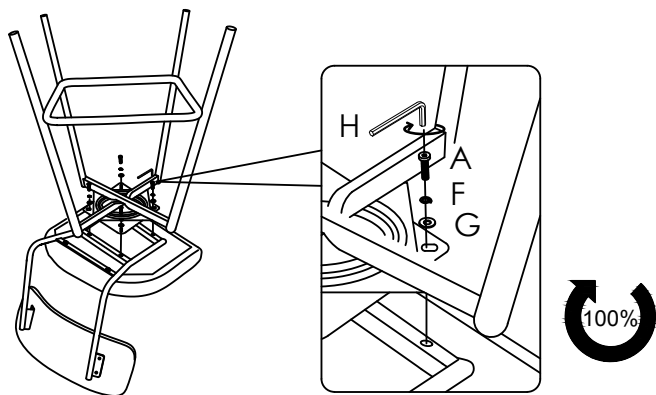
- 4** Put assembled legs in step 3 on a flat surface. Push legs up or down as necessary to level. **Once level, tighten all bolts.**



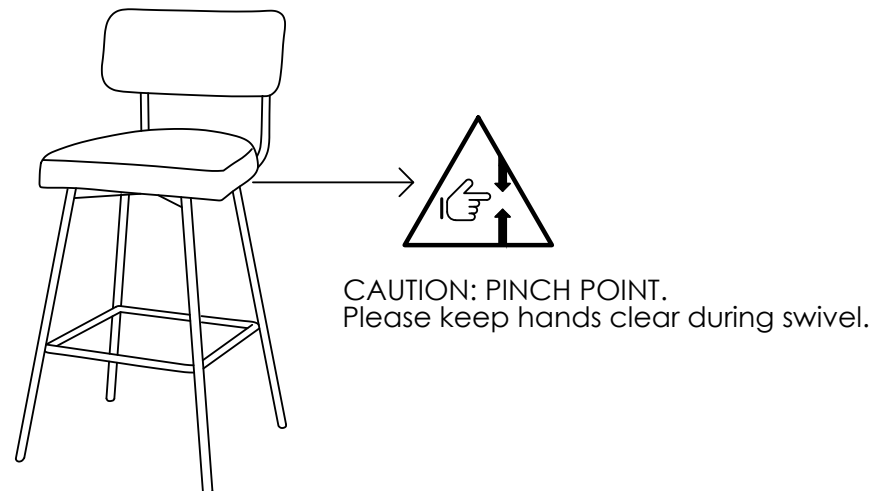
- 5** Attach the backrest (2) to bracket (3), using bolts (E) and allen wrench (H). Then assemble the bracket to seat (1), using bolts (C), lock washers (F), flat washers (G) and allen wrench (H).
Note: Fully tighten all the bolts.



- 6** Turn assembled legs in step 3 upside down, and attach them to seat (1) attached with backrest in step 5, using bolts (A), lock washers (F), flat washers (G) and allen wrench (H).
Note: Tighten all bolts.



- 8** Assembly Completed. Enjoy.



- 7** Turn assembled chair upright and place on a flat surface.
Note: Each leg has an adjustable foot leveler to help level your chair.

