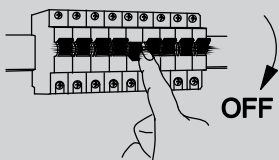


CEILING LIGHT USER MANUAL



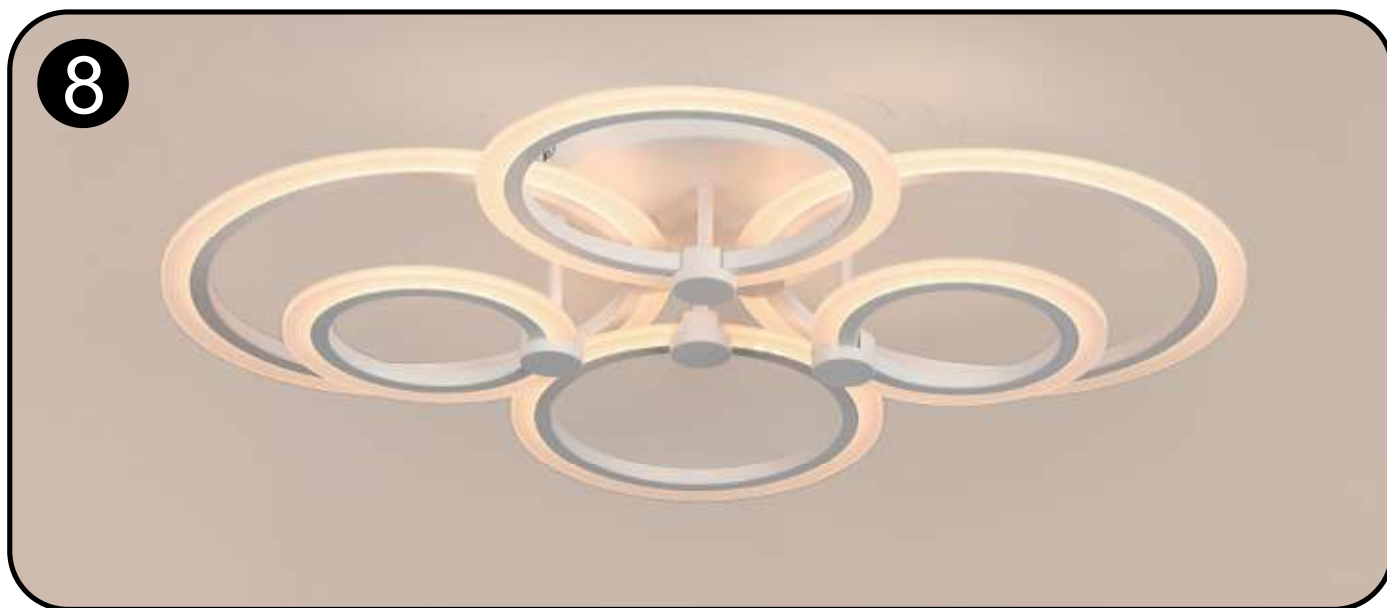
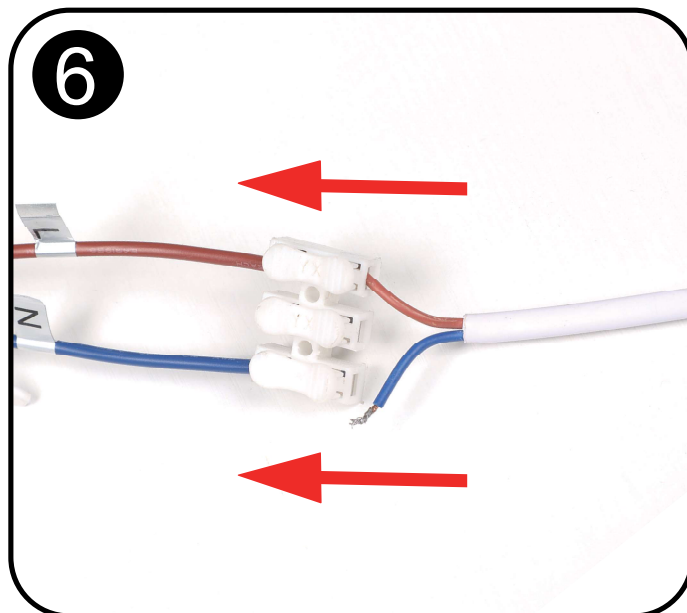
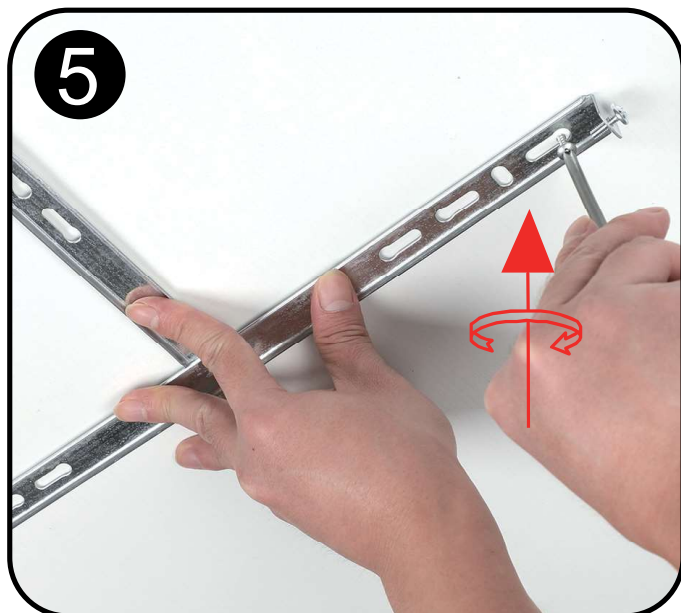
COMPONENTS AND PARTS



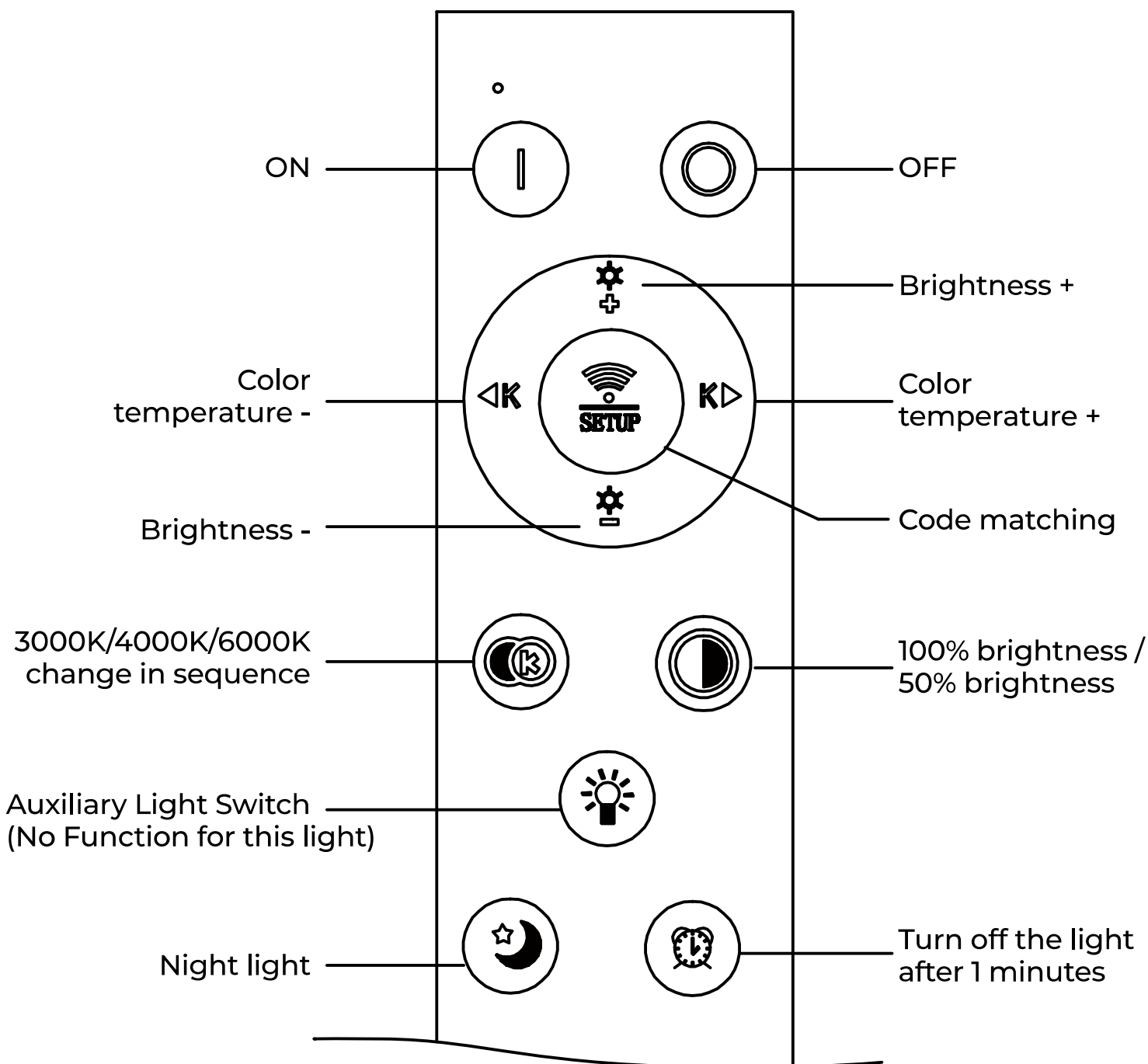
- Read instructions carefully and turn electricity off at main circuitbreaker panel before installation.
- Before installation, make sure all parts are included. If any part is missing or damaged, do not attempt to assemble, install or operate the product.

INSTALLATION STEPS



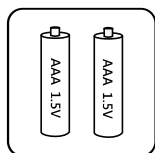


REMOTE CONTROL



If remote control no function, please match code as below:

When the lamp is powered on, quickly press the SETUP key within 3 seconds. The light flashes 3 times, the code matching is successful. Otherwise, turn off the main power supply of the lamp, and then reoperate this step until the light flashes 3 times and the code matching is successful.



NOTICE:

This remote control does not contain batteries. Please insert 2x1.5V batteries before use.

INSTALLATION STEPS

Warm Tips:

Note:Phone APP only supports English Spanish German

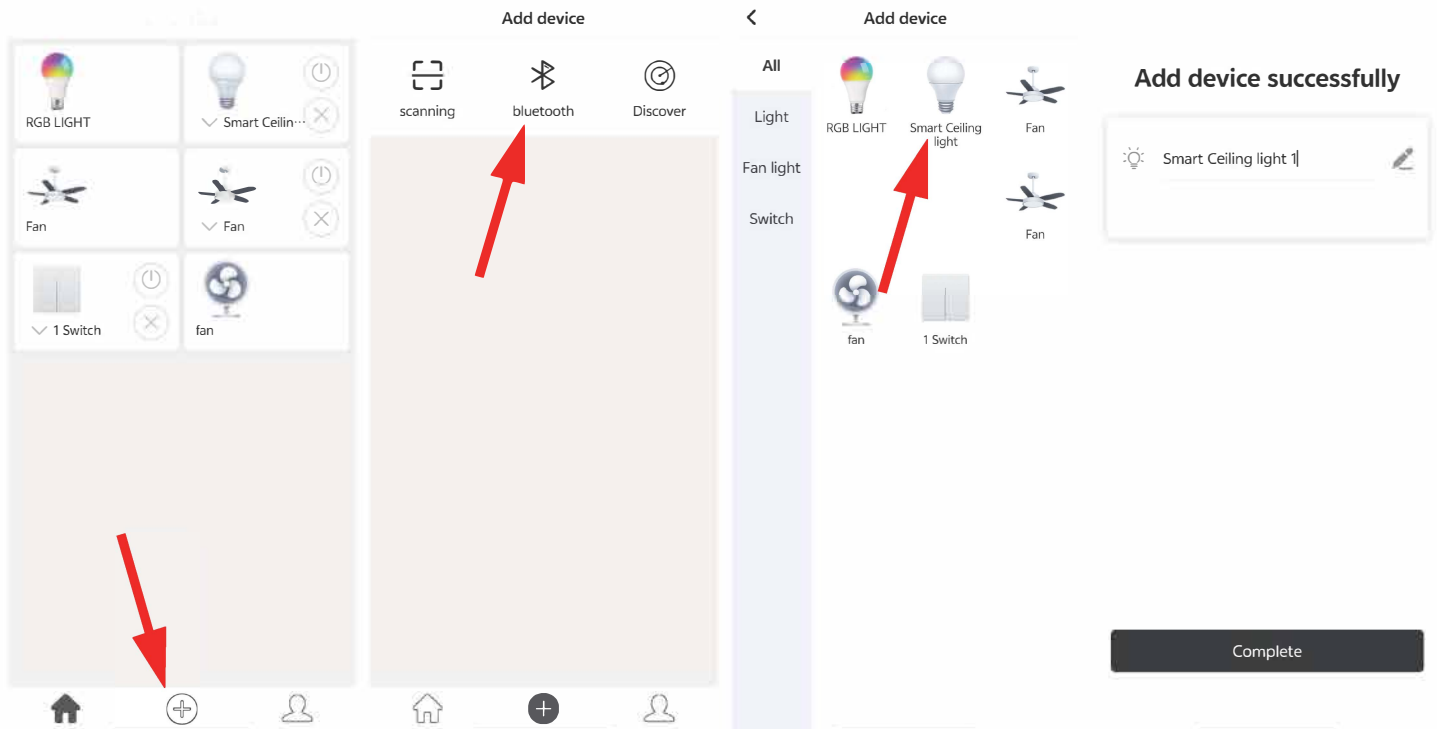
Step 1:

Download the APP

Make sure the Bluetooth on the Phone is on.


Step 2:

Click on the + icon, select the Bluetooth logo, according to your device to choose the type after adding, you can name your device.



Step 3: APP control :

3-1. Turn OFF power - turn ON power again.

3-2. Click the Paring Icon “” to pair the device with your Phone within 5s after the device is powered on.

Once the light flash, it means paired successfully.

Now, you can operate your device through the APP.

