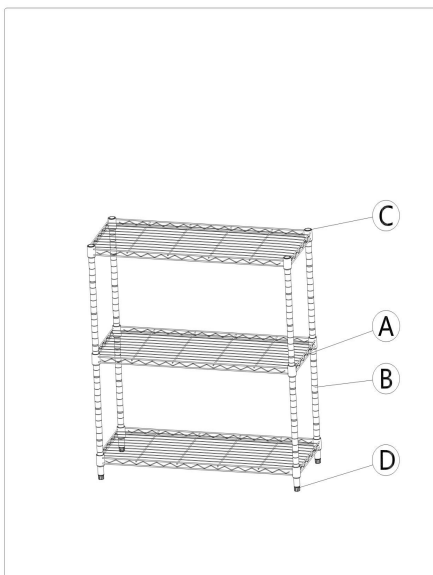


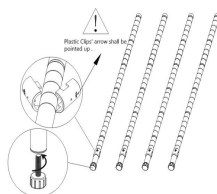
3-TIER METAL WIRE SHELVING INSTRUCTION



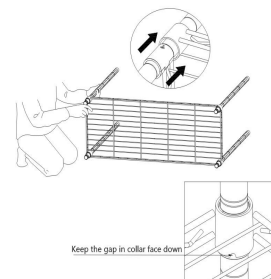
NO	A	B	C	D
Name	Wire Shelf	Pole	Plastic Clips	Adjustable Feet
Parts				
Quantity	3PCS	4PCS	24PCS	4PCS

Assembly Steps:

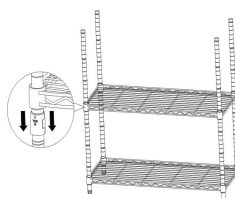
① Screw the Adjustable Feet(D) into bottom of each Pole(B). Snap the Plastic Clips (C) into the pole grooves of four poles at the same position.



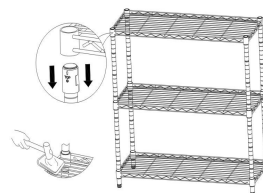
② Please make sure that you have the shelf (A) the correct way up. Hold the shelf on its side and slide the top of the four poles through the bottom of each shelf as its corners until there is a snug fit. After the four poles have been slide through the shelf corner holes, set the shelf upright.



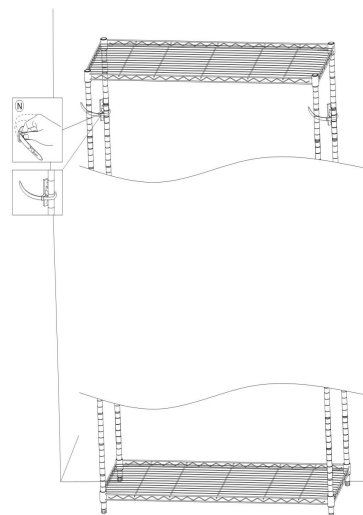
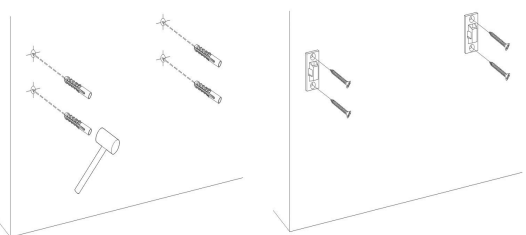
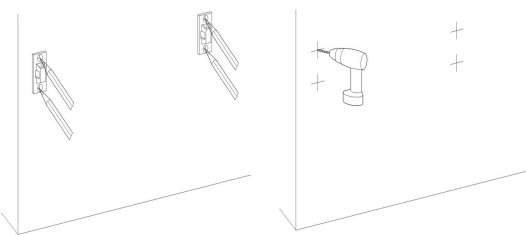
③ Repeat the step (2) to assemble the middle shelf.



④ Repeat the step (2) to assemble the top shelf. Once the shelves is assembled well. Screw the adjustable feet in or out at the bottom of poles to attain proper leveling. Then pushing firmly down on every shelf.



⑦ It' s recommended to install the included anti-tip device for safety.



No.	N
Name	Anti-Tip Device
Parts	
Quantity	1SETS