

Special attention

I can't find Assembly tools! Legs? Backrest?

Flip up the sofa base, pull open the bottom cloth of the base, and you'll see them.



Color Selection



INSTALLATION OF THE SOFA MAIN BODY



- 1 Locate the sofa base and the armrests with pre-installed threaded rods, and assemble them as shown in the picture.



- 2 Take out the gaskets and nuts from the accessories, and tighten them securely as shown in the picture.



- 3 Close the bottom cloth cover and align its holes accurately.



- 4 Take out the sofa legs, threaded rods and metal gaskets (Accessory No.: A, B, D, H*2), and install them as shown in the picture.

7/8

INSTALLATION OF THE SOFA MAIN BODY



- 5 Take out the sofa backrest component and assemble the backrest as shown in the picture.



- 6 Place the seat cushions and back cushions as shown in the picture.



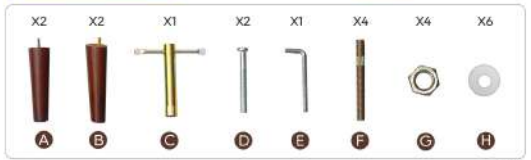
- 7 As shown in the picture, the sofa assembly is complete.

8/8



PRODUCT INSTRUCTIONS

PRODUCT ACCESSORIES



BACK CUSHION INSTALLATION



SEAT CUSHION INSTALLATION



ARMREST INSTALLATION

