



FREESTANDING BATHTUB INSTALLATION

**Instructions for installing your Vivva Home
freestanding tub**

Installation should be conducted by a professional. We're always available for questions, comments, and support.

support@vivvahome.com

1-833-VIVVA-46

www.vivvahome.com



Proudly Canadian

FREESTANDING BATHTUB Installation

Instructions for installing your Vivva freestanding tub



WHAT YOU'LL NEED

- ▶ Measuring tape
- ▶ Adjustable wrench
- ▶ Pencil
- ▶ Caulking gun
- ▶ Standard tools
- ▶ Level
- ▶ Silicone
- ▶ Personal safety equipment

Thank you for choosing <Vivva Home>! Please read these instructions before you get started with your freestanding tub installation.

QUALITY INSPECTION

Please inspect your product for **before** installation & contact us at hello@vivvahome.com if any damage or defect is found.

Contact us if you require assistance with your installation, we'd be glad to help!

INSTALLATION AREA

Your freestanding tub requires a floor surface sufficiently supported and leveled. Evaluate all accessible entry points & their dimensions to ensure easy maneuverability of your freestanding tub into the chosen installation site.

HANDLING

To avoid scratching while handling your freestanding tub, use only non-abrasive cloths. Consult a professional if you are unacquainted with bathroom fixtures and plumbing installations. Vivva Home accepts no liability for any personal injury during installation or any damages to walls, floors, or plumbing.

Rough-In

Depending on your plumbing entry, the sort of drain and connection system will vary. Evaluate the material and height of the finished floor to establish the type of connection system needed.

To determine desired location of the drain, and for measurement descriptions, refer your appropriate Specification Sheet.

We advise performing the rough-in procedures with your freestanding tub on site, as slight adaptations may be required due to approximate measurement specifications.

FREESTANDING BATHTUB Installation

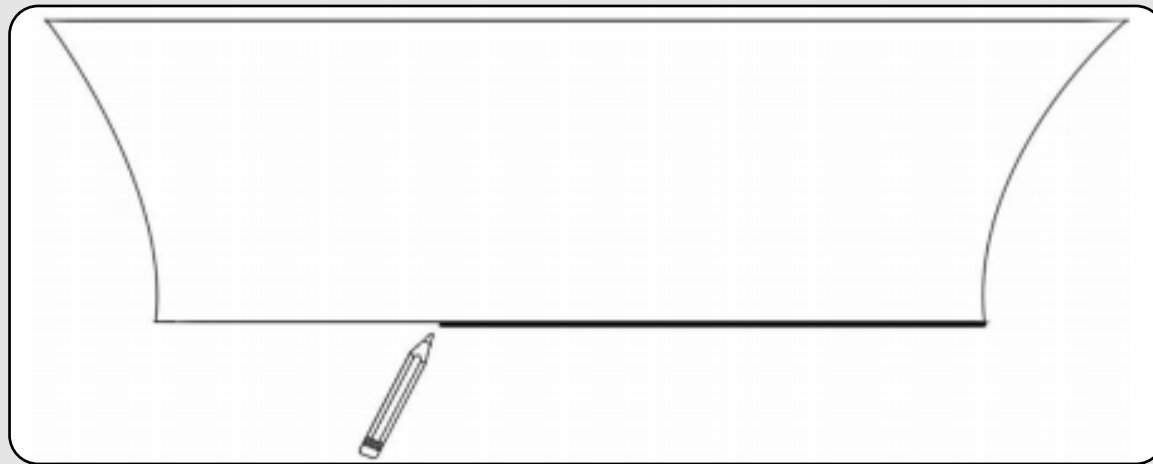
Instructions for installing your Vivva freestanding tub



INSTALLATION INSTRUCTIONS

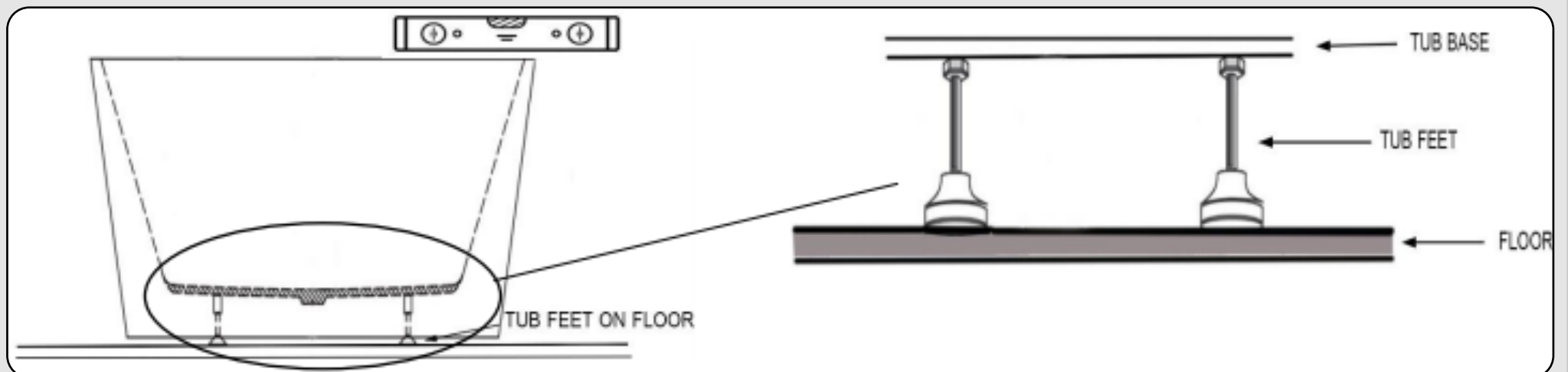
1. Unpack your freestanding tub from its casting and place it on a finished, leveled floor in your desired installation location.

Ensure the drain is in the correct location, and use a pencil to trace the tub's base on the floor.



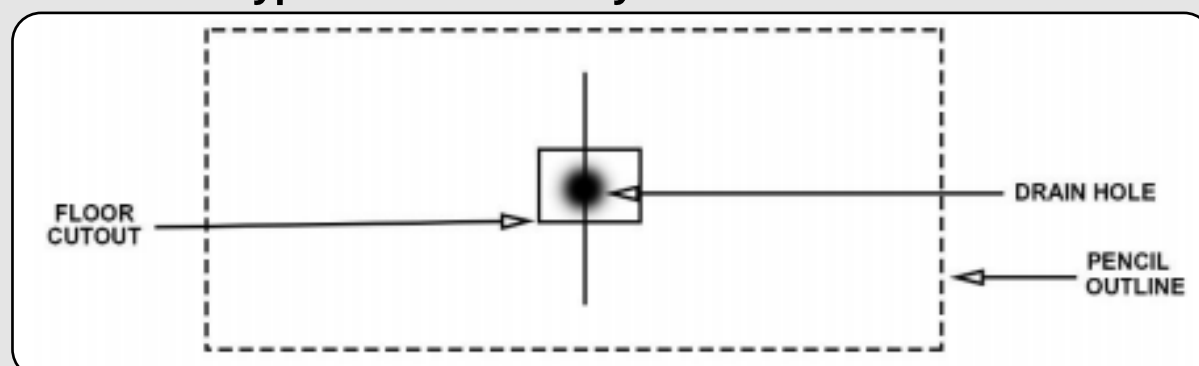
2. Fine-tune the adjustable feet underneath the tub to ensure a gap of no more than $\frac{3}{16}$ " to $\frac{1}{4}$ " between the tub's base and the floor. The tub should **always** be supported by its feet and not by the surface of the tub itself.

Ensure that the tub is level with the floor.



3. Remove your Freestanding Tub so that the plumbing can be installed. Tilt the tub sideways, and carefully place it on a padded surface. Confirm your traced outline conforms with the tub's measurements and drain location. See the included spec sheet for details.

Note: Follow all plumbing, electrical, and construction guidelines and codes. Depending on your plumbing entry, the sort of drain and connection system will vary. Take into consideration the material and height of the finished floor to establish the type of connection system needed.



FREESTANDING BATHTUB Installation

Instructions for installing your Vivva freestanding tub

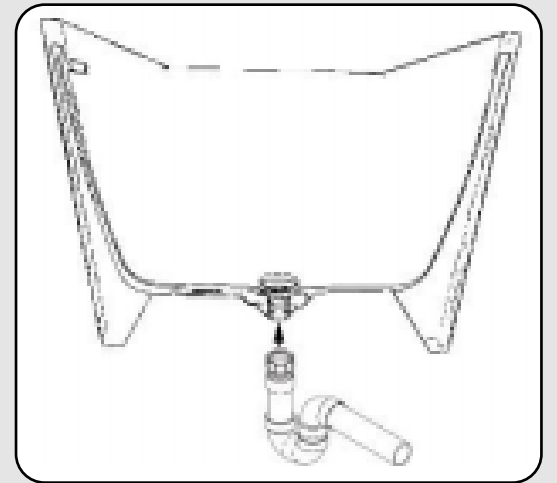
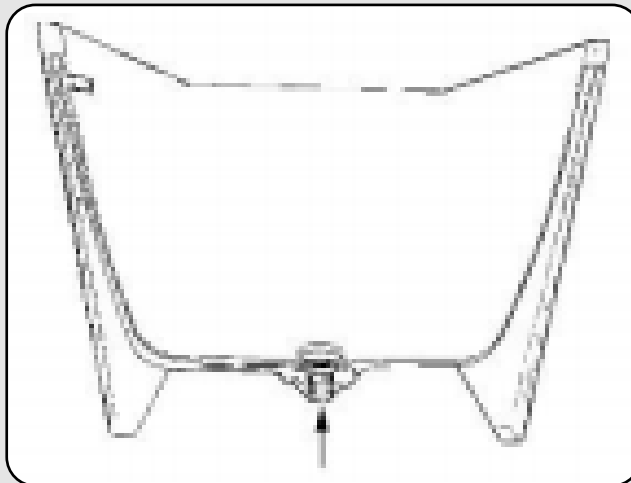
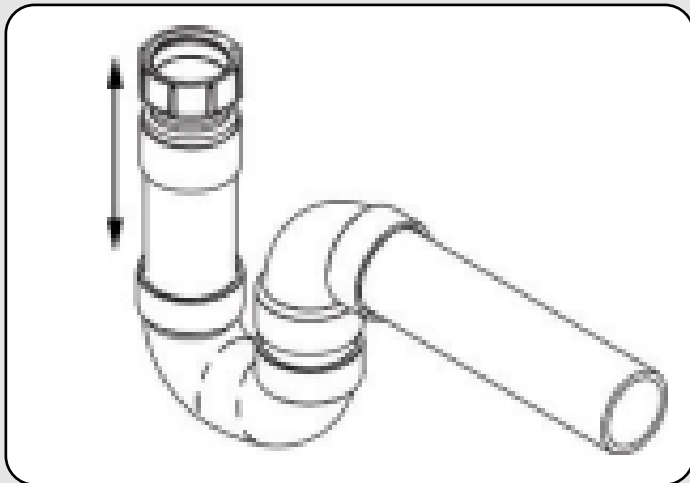


DIRECT CONNECTION INSTALLATION

We recommend consulting a professional for the installation of the drain assembly.

Note: Length of tail piece varies with installation setup. Plumbing connection must be done by a professional, as per code.

4A

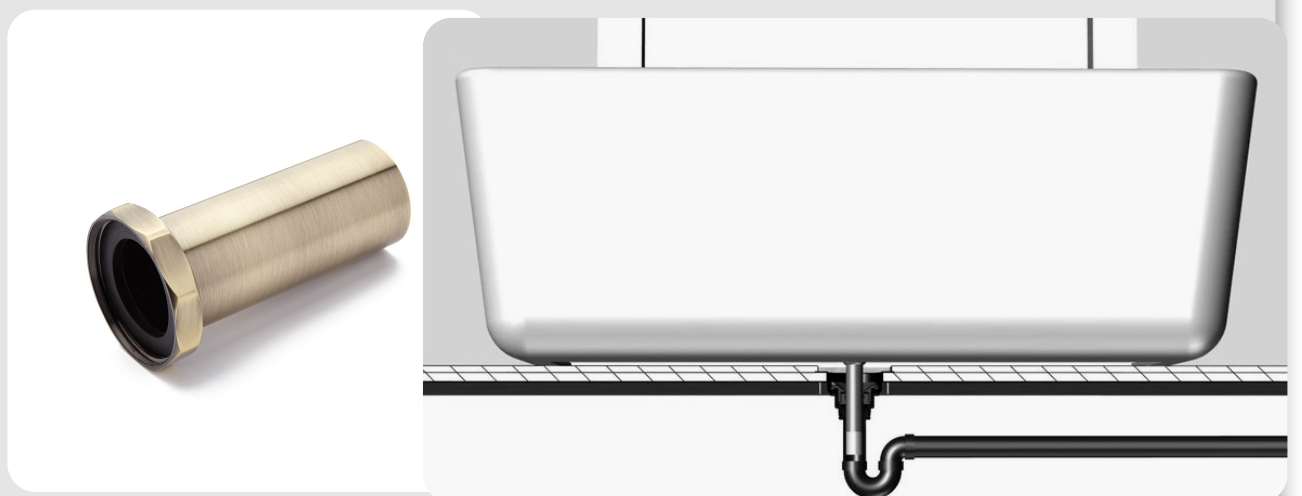


ISLAND DRAIN INSTALLATION

We recommend consulting a professional for the installation of the drain assembly.

4B

- Connect the included tailpipe to the tub drain.
- Test the water to ensure that the connection is tight and that there are no leaks.
- Slide the tailpipe into the island drain installed to your floor.



5. Ensure there are no leaks and that the drain is working properly by filling the tub with water and draining it.

Tighten connections accordingly.



FREESTANDING BATHTUB Installation

Instructions for installing your Vivva freestanding tub



6. Employ the caulking gun with a generous amount of silicone on and around the base of your freestanding tub. Remove excess caulking with a moist cloth as tub meets floor.



Wait 24 hours

Post Installation Cleanup & Maintenance

Your item should be inspected for damage and defects prior to installation. Vivva Home will not accept responsibility for improper installation. Instructions must be followed accurately. We advise consulting a professional installer.

Remove all debris from bath. Liquid detergents or warm water can assist with the post installation cleanup. If deeper stains remain, consult a professional. Sanding with a fine 2000 grit waterproof abrasive paper and water could prove efficient in the event of scratches during installation. Deeper scratches might need a finer abrasive paper.

Shrinkage lines, blemishes, and air holes that are found on the bottom of the tub do not affect in any way the quality of the product nor its warranty, and should not be considered defects.

Do not use wire brushes or any other metal tool on tub surface to remove stains, as abrasive cleaning products will fade the gloss finish over time. You may use non-abrasive kitchen or bathroom cleaners. Acetone, nail polish, or other solvents should not be applied to the bath surface.

Cigarette burns may cause surface damage. Overly hot water may cause surface damage. After bath use, remove mat and hang dry as it can cause surface damage.

Surrounding surface must immediately be cleaned after using caustic drain cleaners. Damages to fixture can be repaired. Call your distributor for details.

All Vivva Home products are covered by a limited warranty against manufacturing defects. Vivva Home employees, representatives, or associates are not in any way liable, personally or otherwise, for any damage or loss encountered due to the product. In the event of any type of damage related to the installation of the product, or in any other way related to the product, Vivva Home liability will be strictly limited to the value of the product.



1-833-VIVVA-46

support@vivvahome.com

vivvahome.com