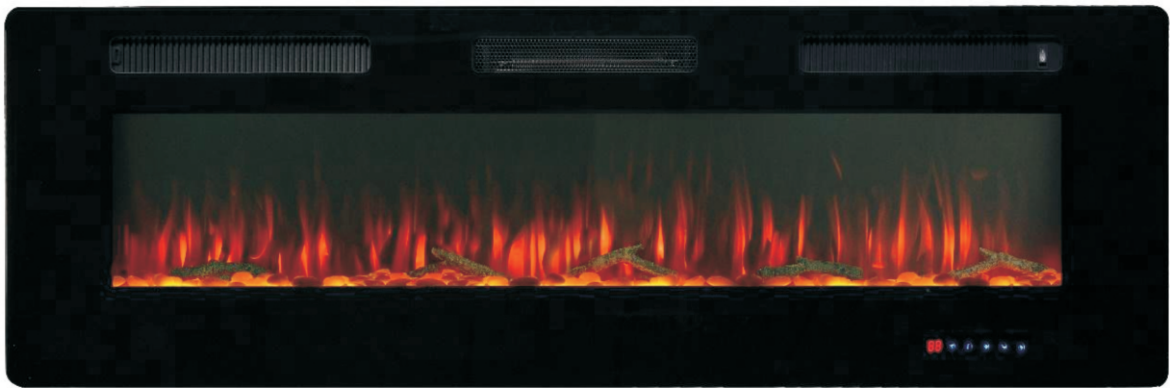


# ELECTRIC HEATER INSTRUCTION MANUAL

EF2009RI  
EF2010WY  
EF2011ME



**ATTENTION:**

- 1.Find a location for the electric heater that is protected from direct sunlight.
- 2.Do not plug the electric heater into the power outlet before you read all instructions.

# **IMPORTANT SAFETY INSTRUCTIONS**

## **SAVE THESE INSTRUCTIONS FOR FUTURE USE**

**WHEN USING ELECTRICAL APPLIANCES, BASIC PRECAUTIONS SHOULD ALWAYS BE FOLLOWED TO REDUCE THE RISK OF FIRE, ELECTRIC SHOCK, AND INJURY TO PERSONS, INCLUDING THE FOLLOWING:**

Read all instructions before using this heater. Failure to follow these important safety instructions may cause fire, electric shock or damage.

Following proper safety and operating instructions is the responsibility of the owner.

- 1) Grounding (If necessary) - this heater is for use on 120 volts. DO NOT attempt to modify the plug in any way or use adaptor to defeat the purpose of the grounding feature.
- 2) This heater is hot when in use. To avoid burns, do not let skin come in direct contact with hot surfaces. The grill directly in front of the heater outlet becomes hot during heater operation.
- 3) Front of fireplace should remain not blocked while in use.
- 4) CAUTION: Extreme caution is necessary when any heater is used by or near children or those with disabilities. Never leave the heater operating unattended.
- 5) Do not operate any heater with a damaged cord or plug or after the heater malfunctions, has been dropped or damaged in any manner. Take heater to authorized service facility for examination, electrical or mechanical adjustment or repair.
- 6) Under no circumstance should this electric heater be modified. Parts having to be removed for servicing must be replaced by a certified repair center prior to operating this electric heater again.
- 7) Do not use outdoors or anywhere it can get wet. This heater is not intended for use in bathrooms, laundry areas and similar indoor locations. Never locate heater in bathrooms, laundry areas and similar indoor locations. Never locate this appliance where it may fall into a bathtub or other water container.
- 8) Do not run cord under carpeting. Do not cover cord with throw rugs, runners, or similar coverings. Arrange cord away from traffic area and where it will not be tripped over.
- 9) To disconnect heater, turn off all controls, then remove plug from outlet.
- 10) Connect to properly grounded outlets only.
- 11) Do not insert or allow foreign objects to enter any ventilation or exhaust opening as this may cause an electric shock or fire, or damage the heater.
- 12) To prevent a possible fire, do not block air intakes or exhaust in any manner. Do not use on soft surfaces, like a bed, where openings may become blocked.
- 13) CAUTION: A heater has hot and arcing or sparking parts inside. Do not use it in areas where gasoline, propane, paint, or flammable liquids are used or stored or where the unit will be exposed to flammable vapors. The heater should not be

used as a drying rack for clothing. Do not hang any decorations on the heater.

- 14) Do not modify this heater. Use this heater only as described in this manual. Any other use not recommended by the manufacturer may cause fire, electric shock, or injury to persons.
- 15) Avoid the use of an extension cord because the extension cord may overheat and cause a risk of fire. However, if you have to use an extension cord, the cord shall be No.16AWG minimum size and rated not less than 1875 watts, and 3-wire cord with grounding type plug and cord connector.
- 16) Do not plug this product into a receptacle controlled by a wall switch or dimmer.
- 17) Always use a certified electrician should new circuits or outlets be required.
- 18) Always disconnect power before performing any cleaning, maintenance or relocation of the heater.
- 19) For off-season storage, keep in a dry place.

**NOTE:** Procedures and techniques that are considered important enough to emphasize.

**CAUTION:** Procedures and techniques, which, if not carefully followed, will result in damage to the equipment or personal property or may cause personal injury.

**WARNING:** Procedures and techniques, which, if not carefully followed, will expose the user to the risk of serious injury, illness or death.

**WARNING:**

This heater and parts become hot when in use. The area directly around and under the heater must be clear and free of any obstructions.

**DO NOT ALLOW CHILDREN TO OPERATE THIS HEATER. KEEP CHILDREN AND PETS AWAY FROM HEATER AND CONTROLS.**

**Electrical Parameter**

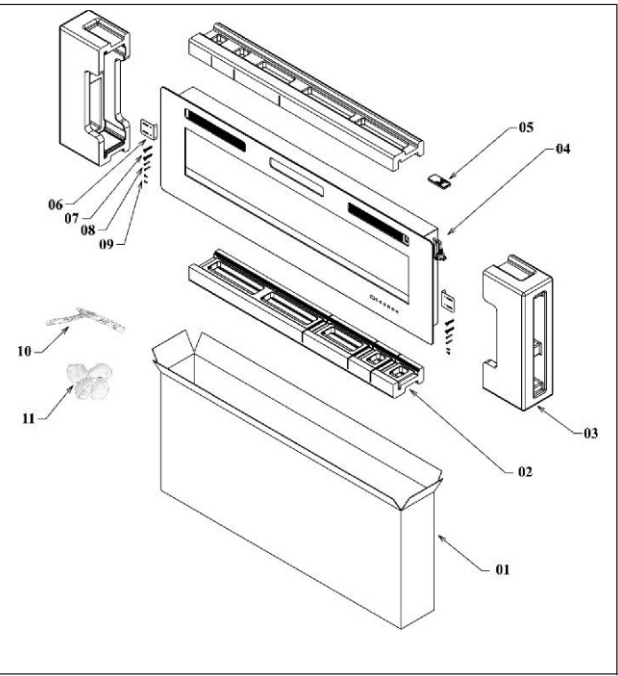
- ◆ Power supply: 120V AC
- ◆ Frequency: 60Hz
- ◆ Power: 1400W

**NOTE:** If the supply cord is damaged, **it must be replaced by the manufacturer, its service agent or similarly qualified persons in order to avoid a hazard.**

# Getting Started

Remove the appliance from the box.  
Remove any packaging from the appliance.  
Place the packaging inside the box and either store or dispose properly.

- Heater.
- Pebble and log
- Fixing screws and wall plugs.
- Remote control.
- Instruction Manual.

| serial numbr | name                           | quantit y                                 |  |
|--------------|--------------------------------|---|---|
| 001          | Carton                         | 1   |   |
| 002          | Top and bottom protective foam | 2   |   |
| 003          | Left and right protective foam | 2   |   |
| 004          | Machine                        | 1   |   |
| 005          | Remote control                 | 1   |   |
| 006          | Fixed plate                    | 2   |   |
| 007          | Screw ST4*28                   | 4   |   |
| 008          | Expansion tube                 | 4   |   |
| 009          | Fixing screws ST4.2*10         | 4   |   |
| 010          | Log                            | 2(EF2009RI)<br>3(EF2010WY)<br>4(EF2011ME) |   |
| 011          | Pebble                         |   |   |
|              |                                |   |   |
|              |                                |   |   |

## Helpful Advice Before Fitting

Please retain all packaging until you have checked and counted all the parts and the contents of the fixing pack against the parts list.

The fixing pack contains small items which should be kept away from young children  
We suggest that you open the fixing pack and place all the contents into a container, therefore reducing the risk of losing any small pieces before Installation.

# Installation

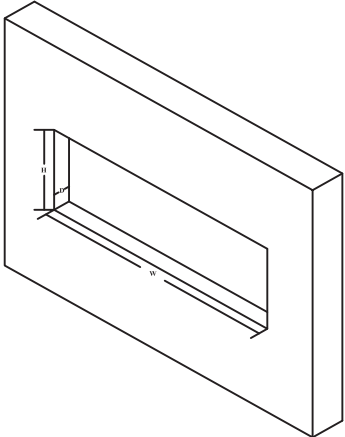
**Caution:** This heater can be installed in one ways. If you need other installation methods, please contact the dealer and purchase additional installation accessories.

## Important Safety Instructions

When using this electrical appliance, basic precautions should be followed to reduce the risk of fire, electric shock, and injury to person, including the following:

- a) Get the glass off first
- b) Do not connect the appliance until properly fixed to the wall and the instructions is read fully.
- c) The minimum distances must be observed.
- d) For installation of the appliance, care must be taken not to damage concealed cables.
- e) Please be careful while drilling the holes.
- f) This appliance is designed to be permanently fixed to a wall at a minimum height of 300mm.The wall bracket must be fitted horizontally and the cable routed to the bottom right of the heater

1

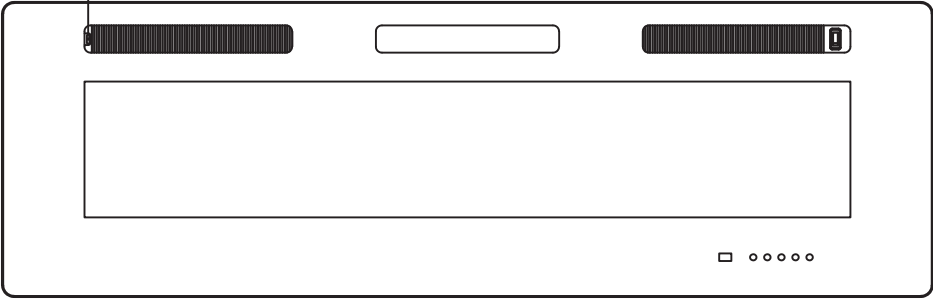


When embedded in the wall, the reserved space in the wall should not be less than the following dimensions.

|      |                       |
|------|-----------------------|
| 40in | 920*480*100mm(W*H*D)  |
| 50in | 1174*480*100mm(W*H*D) |
| 60in | 1428*480*100mm(W*H*D) |

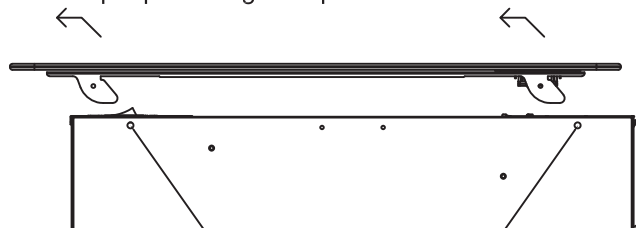
2

Remove the glass fixing screws



3

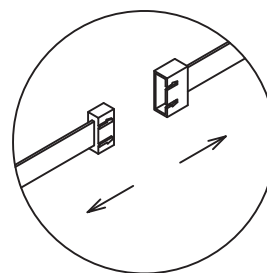
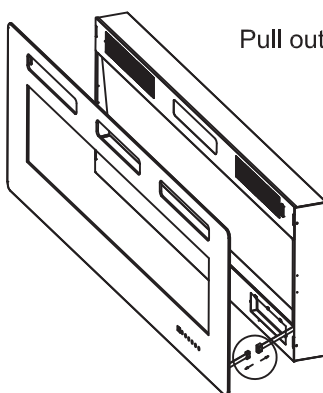
Lift the glass in the direction shown in the picture.  
Because the glass is heavy, there must be no less than 2 people during the operation.



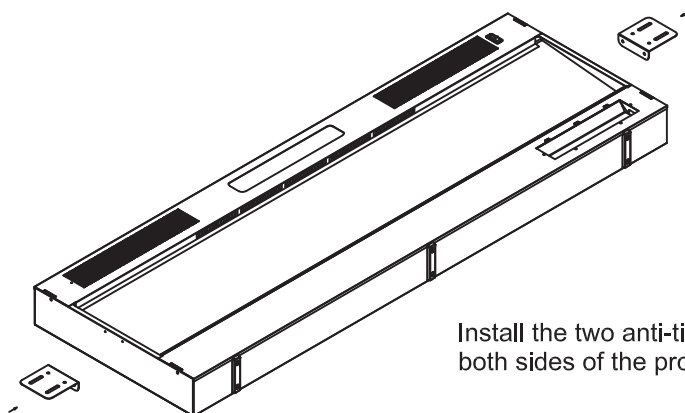
Remove the shipping screws on the both sides.

4

Pull out the cable interface of the touch button



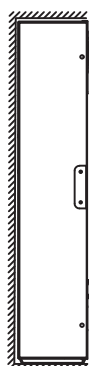
5



Install the two anti-tip brackets on both sides of the product as shown

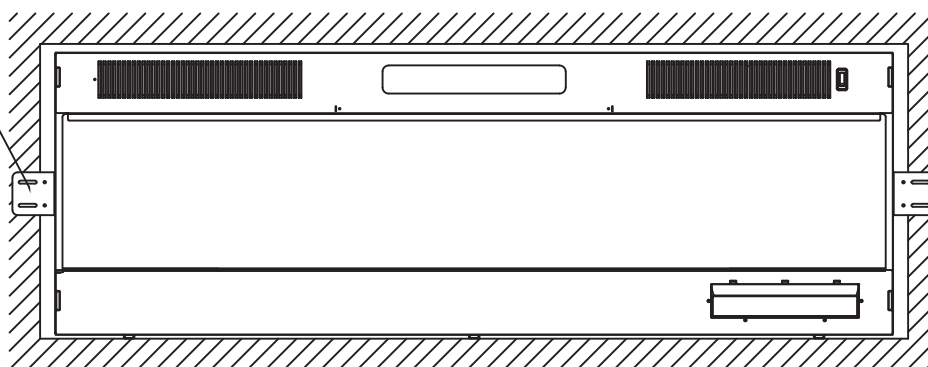
6

Push the product into the space reserved on the wall



7

Install the anti-tipping bracket

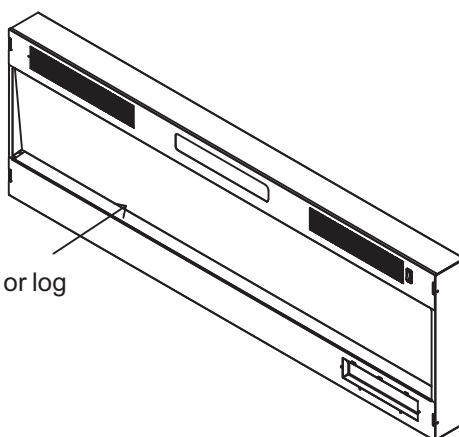


Install the anti-tipping bracket

The anti-tipping bracket should be higher than the wall and fixed to the wall with screws

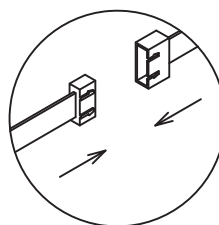
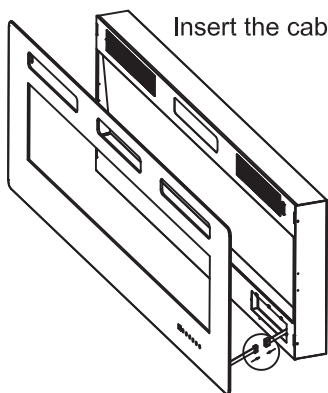
8

Put in pebble or log



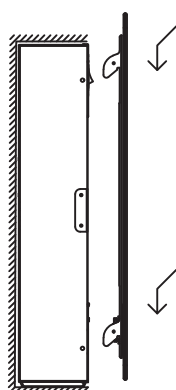
9

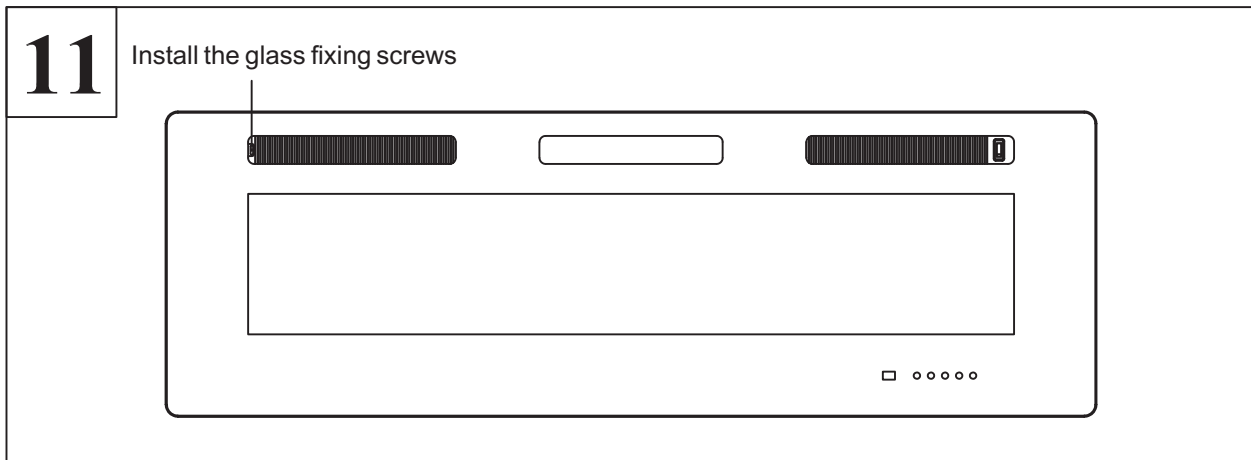
Insert the cable interface of the touch button into



10

Insert the glass into the product in the direction shown





**Operating Instructions**

Once the electric heater has been properly installed and connected to a ground electrical outlet, it is ready to operate.

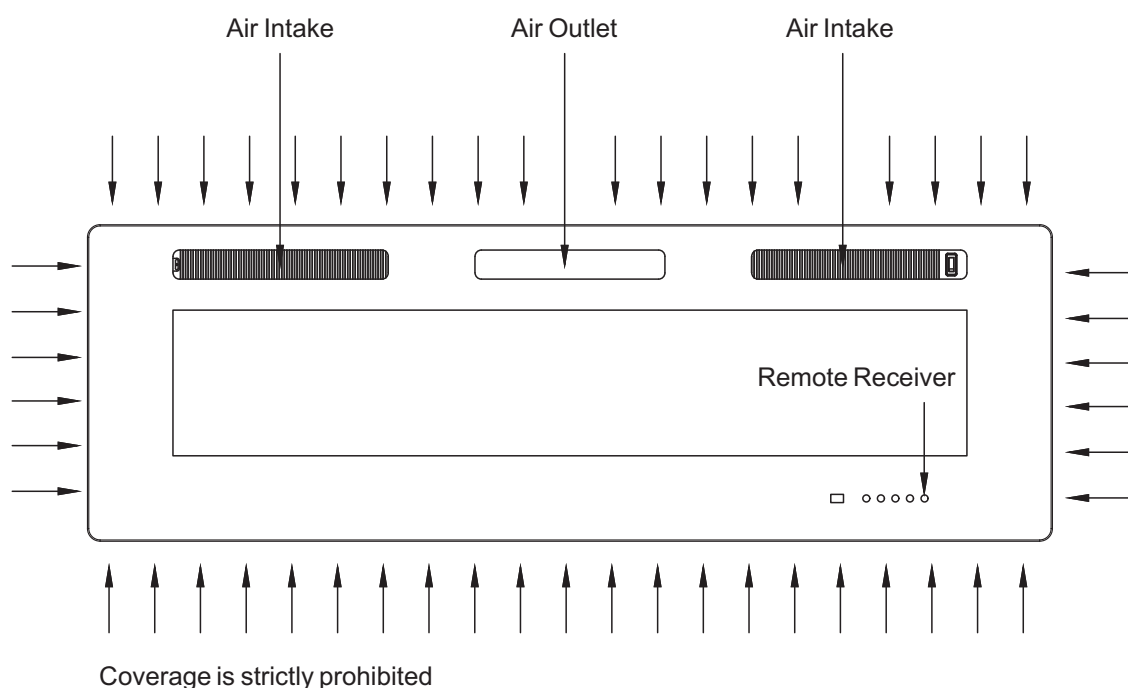
**Notes:**

- Ensure the circuit breakers for the power supply are turned on.
- This machine uses remote control and touch screen to control the work of the product.
- During remote control and touch operation, the buzzer will beep once for each effective operation.
- The temperature setting of this machine can only be adjusted between 50→82 Fahrenheit, and the whole process can be heated according to the user's set temperature. After 82 degrees, it is ON, which is equivalent to direct heating, but when the machine senses that the indoor temperature is close to 102 degrees, it stops heating.



**Main power switch:** The power switch on the upper part of the machine is closed, the buzzer beeps, and the backlight of the touch screen lights up once, and the system enters the standby state; the switch is opened, that is, the main power supply is cut off.





### Operation with touch Screen Control Panel



Standby key: Touch once, the machine enters the running state, and the flame lamp starts to run. Touch again to turn off the operation and enter the standby state.




Timing key: set the working time of the machine, touch this key, the screen displays **88** "1H"→"2H"→"3H"→"4H"→"5H"→"6H"→"0H" in turn, and "1H" means timing work Shut down after 1 hour, up to 6 hours timing.



Flame key: When the machine is a multi-color flame, touch this key to adjust the flame color. There are **10 types** of frame color which consists of orange → red → green → blue → red-green → red-blue → blue-green → red-orange→green-Orange→blue-orange. Long press for 3 seconds to turn on the flame light intensity adjustment function. The flame Optics will go lower from L4 to L1.



Heating key: Touch this key to set the temperature. The screen displays "H1"→"H2"→"H0" in sequence, respectively, heating low, high, and off.

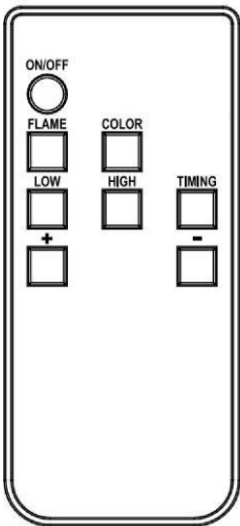
Press and hold this button for 3 seconds, and the screen  flashes to enter the temperature adjustment state.

Touch this button again to adjust the temperature. The temperature will gradually decrease from "82" to "50" to "ON" and back to "82". You can set the desired temperature by press this key. No more operation at the time, the screen flashes for 15 seconds and automatically saves the current set temperature.



Display screen: display temperature or operation content or current room temperature.

**Operation by the Remote control**



- ON/OFF:** Switch on and off
- FLAME:** Adjust the flame brightness under the sequence of "L4"→"L3"→"L2"→"L1" from bright to dark in 4 steps in sequence.
- COLOR:** Adjust the flame color (this key is only available for models with multi-color flame function)
- LOW:** Control the low-level heating on "H1" and off "H0"
- HIGH:** Control high-end heating on "H2" and off "H0"
- TIMER:** Adjust the working time of the machine
- ‘+’:** Adjust the set temperature upward
- ‘-’:** Adjust the set temperature down

### **Remote Control Battery Replacement:**

Replace with a CR2025 battery and follow the diagram at the back of remote handset to install the new battery.

### **Overheat Safety Cut-Off Function**

This appliance is fitted with a safety cut-off which will operate if the fireplace overheats(e.g. Due to blocked air vents). For safety reasons, the appliance will NOT automatically reset.

To reset the appliance, **plug off** the appliance from the mains supply for at least **15 minutes**.

Reconnect the supply to the mains and switch on the appliance.

### **Maintenance:**

**WARNING:** Completely disconnect power before attempting any maintenance or cleaning, to reduce the risk of fire or electric shock. Maintenance should only be performed by a certified technician.

### **Cleaning:**

Before cleaning any parts of the fireplace make sure to first turn off the controls and then unplug the unit from power source.

**CAUTION:** Wait until the unit has completely cooled before attempting any cleaning.

**Cleaning Glass Panel:** Remove dust with clean dry cloth. Remove fingerprints and other marks from glass door by using a clean damp cloth. Do not use abrasive cleaners or spray liquids on glass door surfaces.

Metal and metal painted parts should be cleaned with clean damp cloth only. Do not use abrasive cleaners or spray liquids on these surfaces.

Thank you for purchasing this product! If you have questions about assembly or operation of this product, such as missing parts, or if the product is damaged, please contact us via platforms' Message or call customer service Phone: 1-800-487-9252. (9:30 a.m. - 4:30 p.m. PST). Or feel free to contact our customer service email address: [cs@cmphouse.com](mailto:cs@cmphouse.com) with your platform, platform's order ID#, and detail issue.