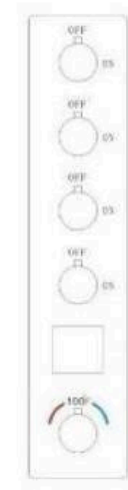
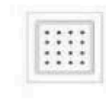
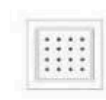


THERMOSTATIC SHOWER MANUAL



Installation Step



Multi-function Thermostatic Concealed Shower

INSTALLATION Tools You Will Need :



Adjustable wrench



Hexagon wrench



Philips Screwdriver



Pipe Tape



Glue

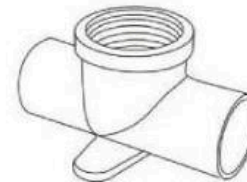
Notes before installation :

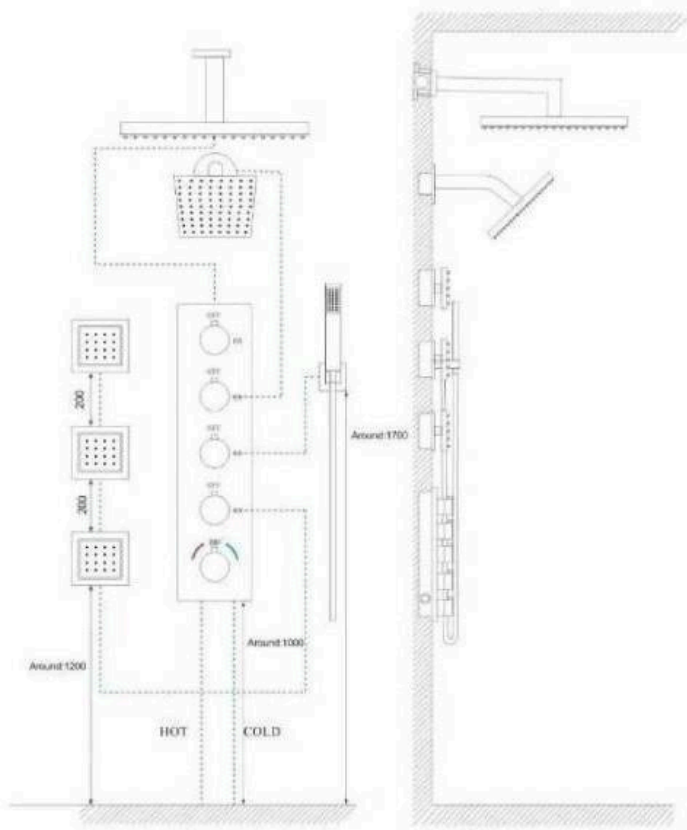
1. Please check that all components are available.
2. Before installation ensure that all feed lines are clear of debris and on/off valve is available.
3. Ensure water pressure is between 20-125 PSI (includes combination of hot and cold feed lines).
4. Pictures in the manual are general in content and may not represent exactly your purchased faucet. If you are having difficulties please contact a professional plumber.
5. If you will be away from home for an extended period you should shut off the main water supply.

Daily maintenance

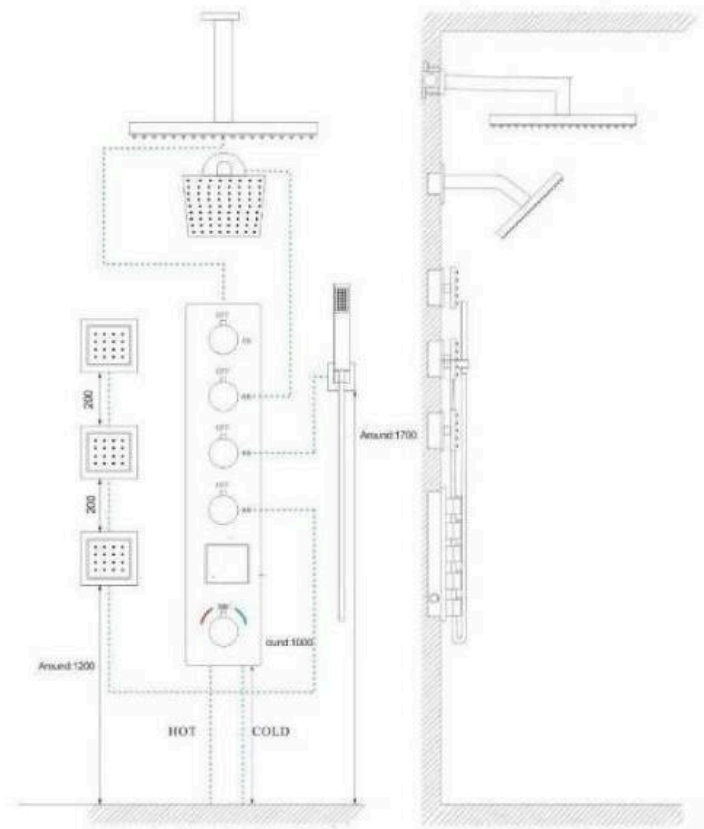
1. Use a soft cloth and vinegar to remove hard-water spots.
2. Check aerator (if present) regularly for calcium build up are when water stream is not optimum.
3. DO NOT use caustic cleaning products as the use will break down finish and will void the product warranty.
4. Acceptable cleaners include vinegar or mild non-abrasive liquid detergents.
5. If the water pressure appears to be less than optimum remove, inspect, clean or replace aerator

You need to purchase this accessory to install



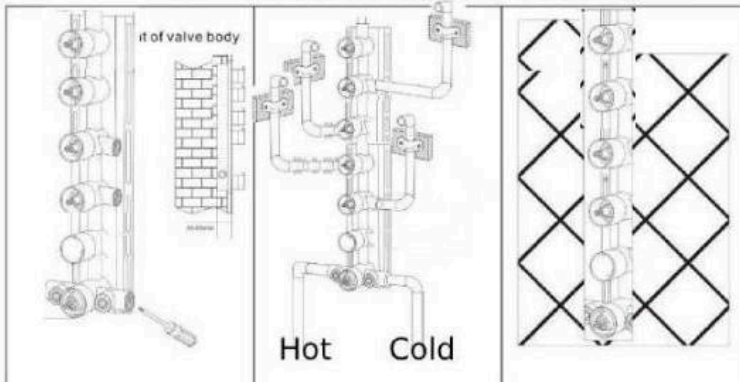


3

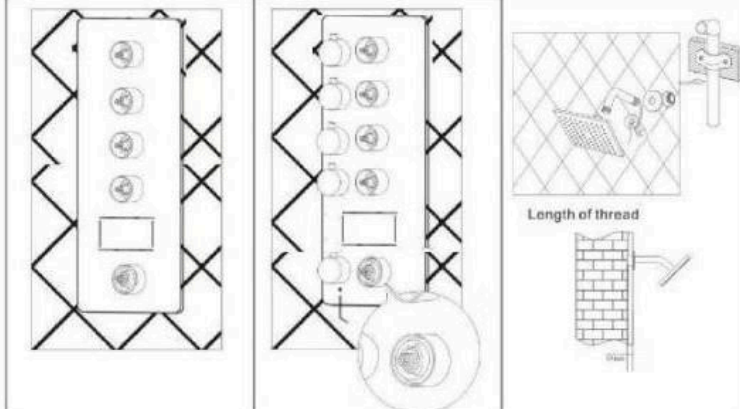


4

◆ Installation step — 1/2 inch inlets 3-way thermostatic shower faucet

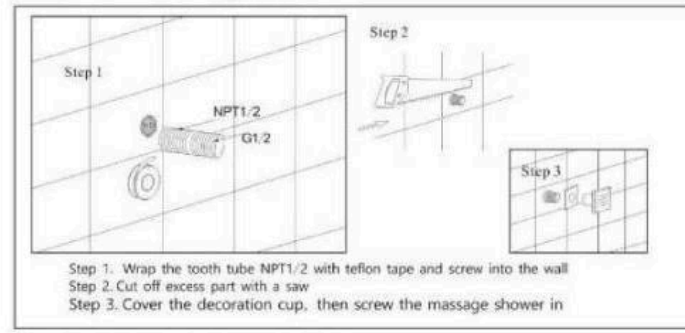


1. Confirm the installed place of the pressure balance valve and fixed on the wood block .
2. Connect the hot&cold inlet tube and outlet tube,then make sure the tube fix stable on the wooden wall.
3. Please cut the size of the tile hole according to the size and shape of the protected cover (about 5mm bigger than the protected cover from each side).And please put the tile outside the wooden wall (please noted that we keep the same central point for the tile hole with the protected cover).



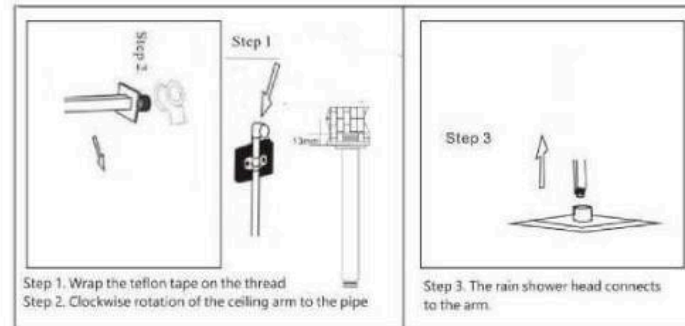
4. Install the water proof cover to the N-box with glume,fix the steel plate, then install the handle levers.
5. Put on the handle,then tight the screw.
6. Wrap the teflon tape on the thread Step .Clockwise rotation of the wall arm to the pipe, the rain shower head connects to the arm.

◆ Install the massage shower



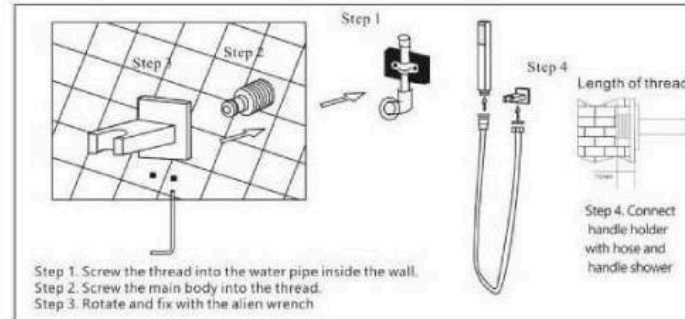
- Step 1. Wrap the tooth tube NPT1/2 with teflon tape and screw into the wall
- Step 2. Cut off excess part with a saw
- Step 3. Cover the decoration cup, then screw the massage shower in

◆ Install the rain shower head



- Step 1. Wrap the teflon tape on the thread
- Step 2. Clockwise rotation of the ceiling arm to the pipe
- Step 3. The rain shower head connects to the arm.

◆ Install the handheld shower head



- Step 1. Screw the thread into the water pipe inside the wall.
- Step 2. Screw the main body into the thread.
- Step 3. Rotate and fix with the alien wrench
- Step 4. Connect handle holder with hose and handle shower

For a bathroom installation, use 1/2-inch or 3/4 -inch hot and cold water pipelines for the valve, and ensure all other pipelines are 1/2-inch, with the hot water pipeline connecting to the left inlet of the valve and the cold water pipeline connecting to the right inlet, while also verifying the correct depth for the valve body within the tile wall.

Ensure the temperature cartridge is set correctly, as an improper setting can prevent the valve from functioning properly. Please refer to the final page that show how to set it correctly;

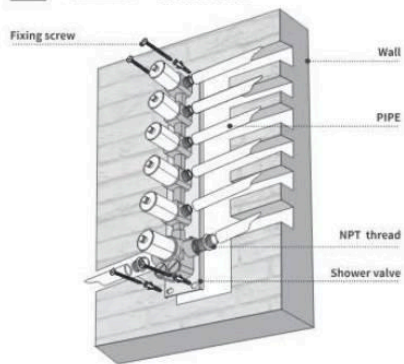
Confirm that the opening of the round black or blue piece faces the right side, as an improper orientation can prevent the delivery of hot or cold water.

For after-sales service, you can contact us at 909-666-1368, 909-516-4032, or by email at info@showerwonder.com.

Installation method

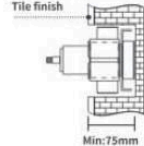


9-2 5 Function thermostatic control shower valve



Before Tiling

Please grooved and install the shower valve according to the size drawing, the depth of the groove is about 75-110mm

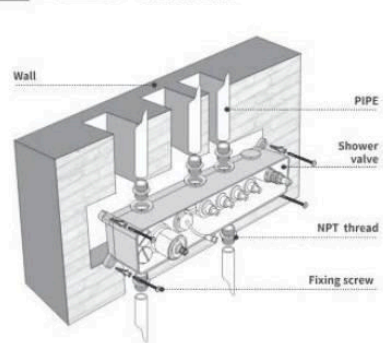


After the installation is complete, turn on the water source and try to see if the water is

Installation method

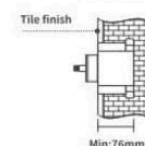


9-3 4 Function thermostatic control shower valve



Before Tiling

Please grooved and install the shower valve according to the size drawing, the depth of the groove is about 77-85mm



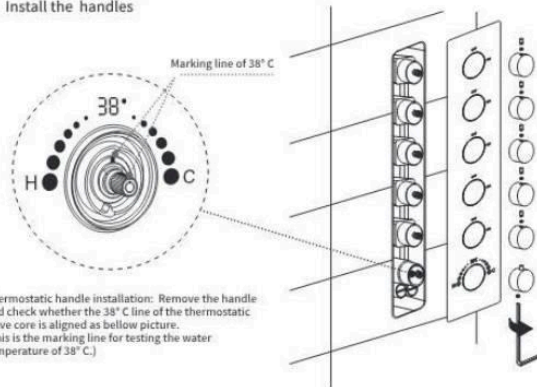
After the installation is complete, turn on the water source and try to see if the water is

10-2

5 Function thermostatic control shower valve

Install the handles

After Tiling



Thermostatic handle installation: Remove the handle and check whether the 38° C line of the thermostatic valve core is aligned as below picture. (This is the marking line for testing the water temperature of 38° C.)

10-3

4 Function thermostatic control shower valve

After Tiling

Install the handles

