



BAYSQUIRREL

Ceiling Fan With Light



User Manual

***Read this manual before using the product,
and keep it for future reference.**

Activate 1 year non-human damage replacement service



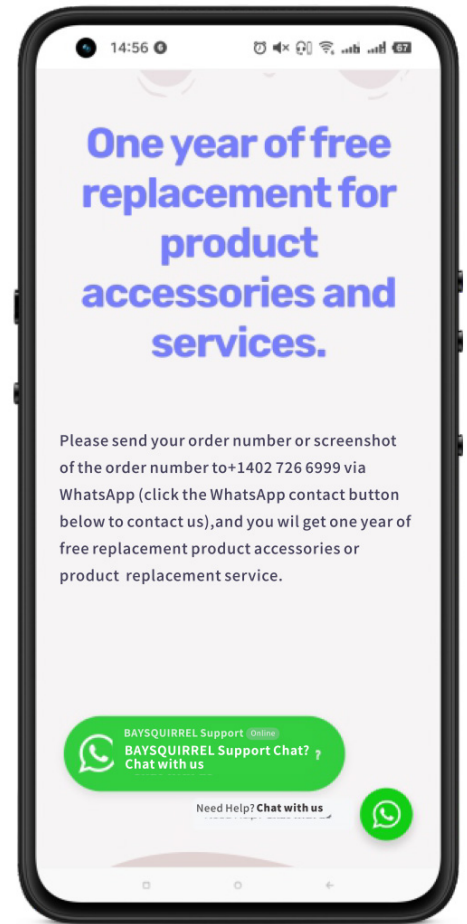
Scan the QR code to visit the BAYSQUIRREL official website(www.baysquirrel.vip) to view product installation and usage videos, and activate the 1-year free replacement service for non-human damage.

After-sales Email: support@baysquirrel.vip

After-salesSMS/WhatsApp: **US/CA + 1 402 726 6999**

Activation service/Product Explainer Videos: www.baysquirrel.vip

BAYSQUIRREL Makes Life Full of Innovation and Fun



Ceiling fan accessories list



Full-Spectrum Lamp



Fan light machine



fan rack



decorative cover



fan blade



Small, medium and large decorative covers



support



Screw bag



Remote control unit

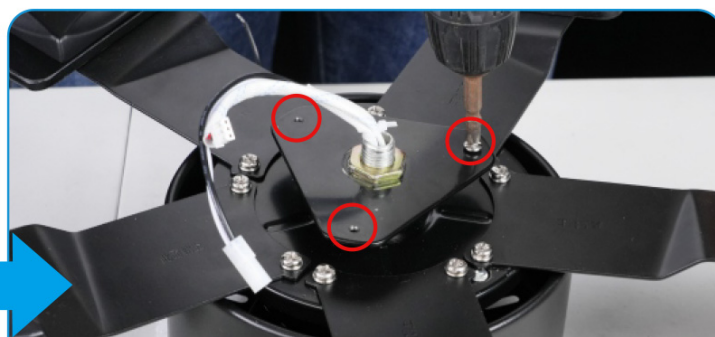
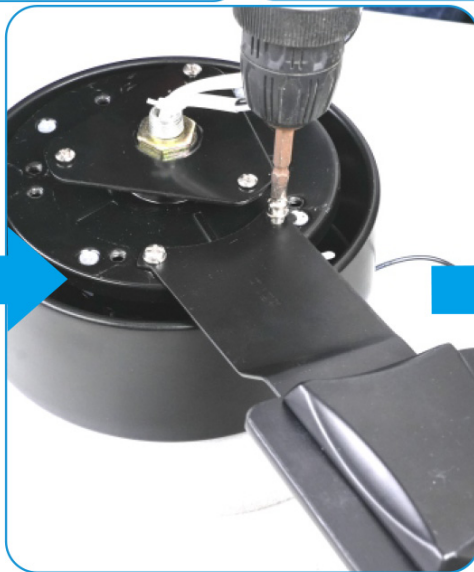


derrick

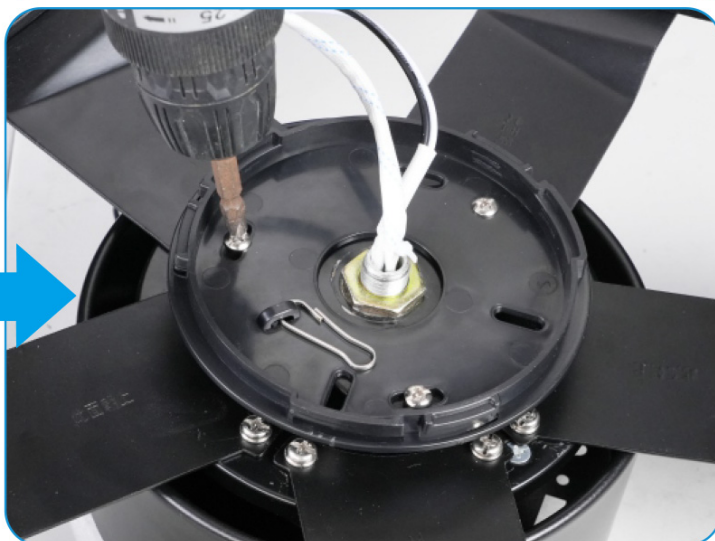
Installation steps for fan lights

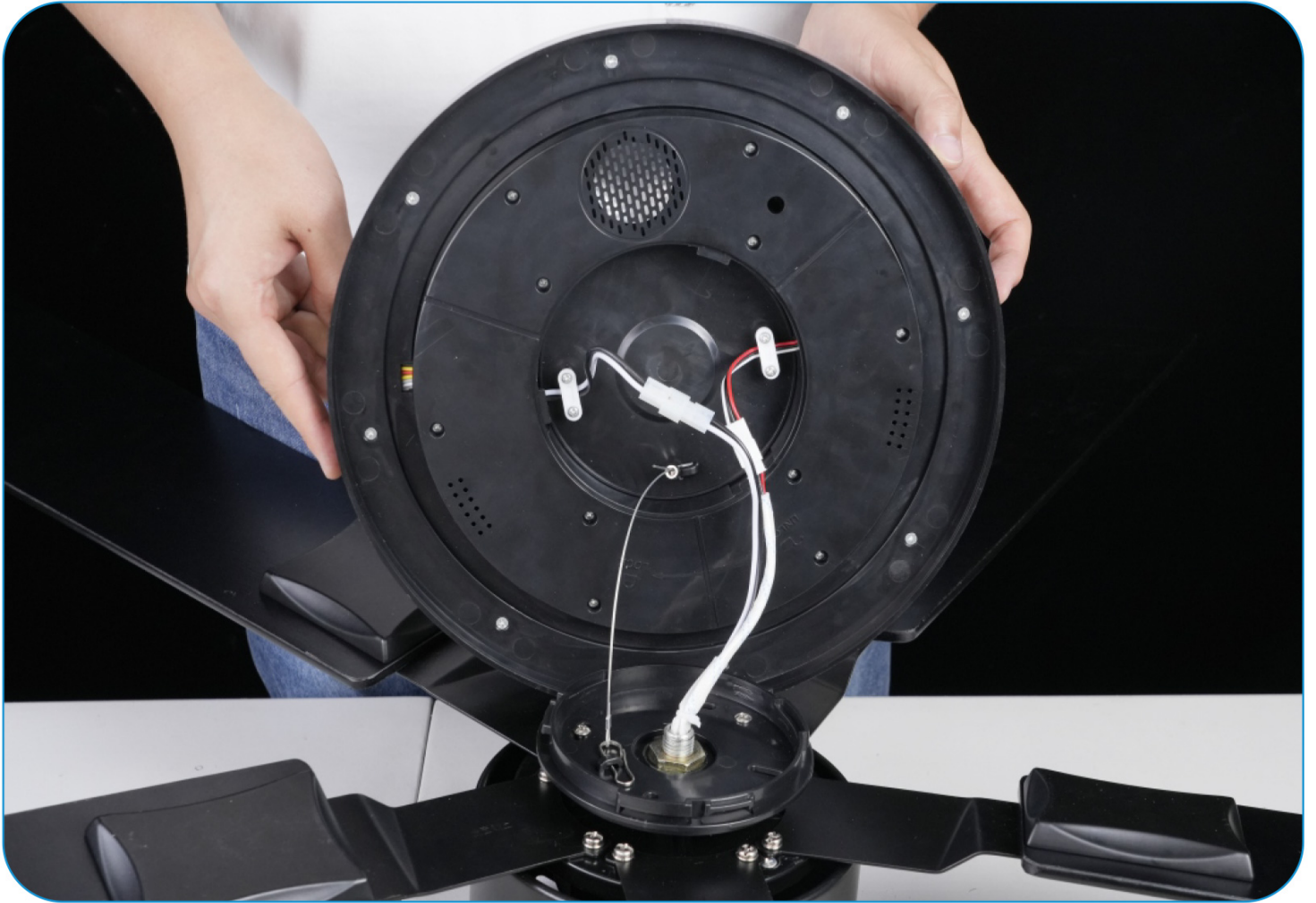


Remove these 10 screws.



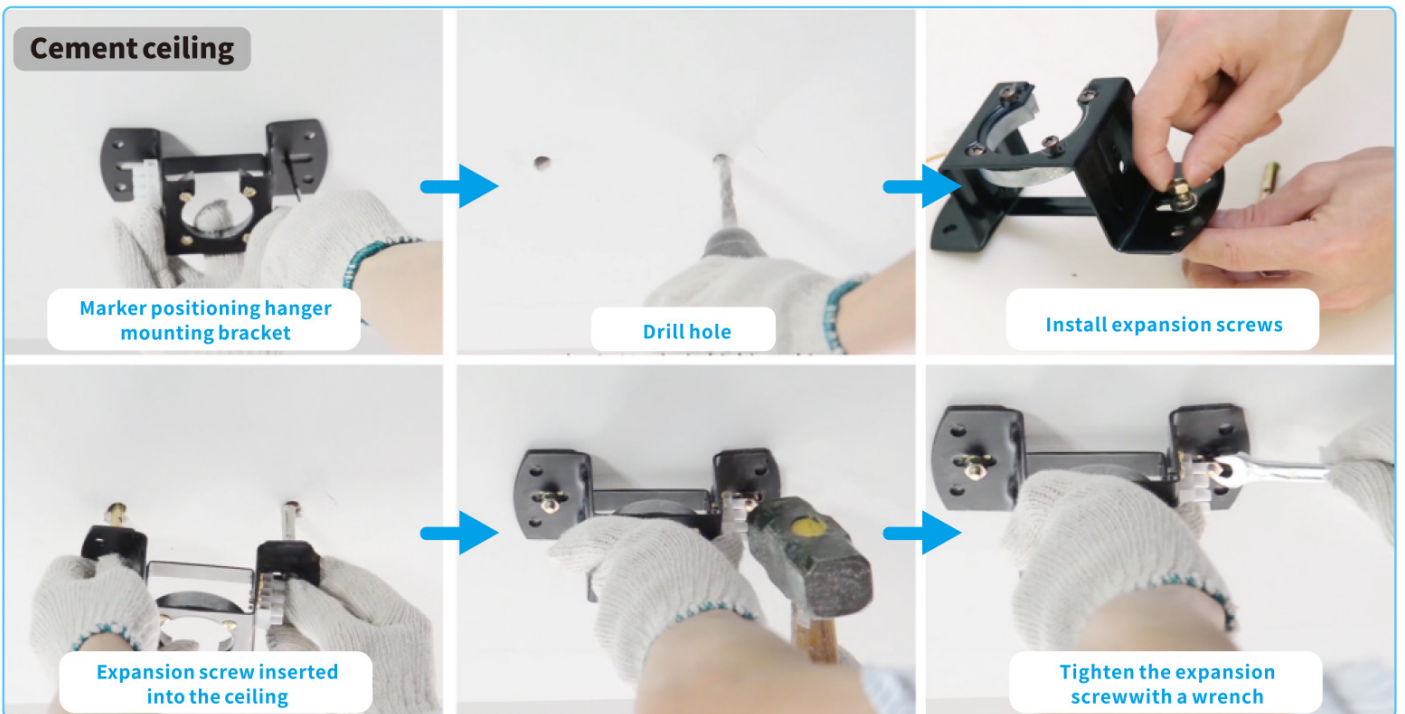
Remove these 3 screws.







Mounting bracket installation, install the ceiling fan to the mounting bracket

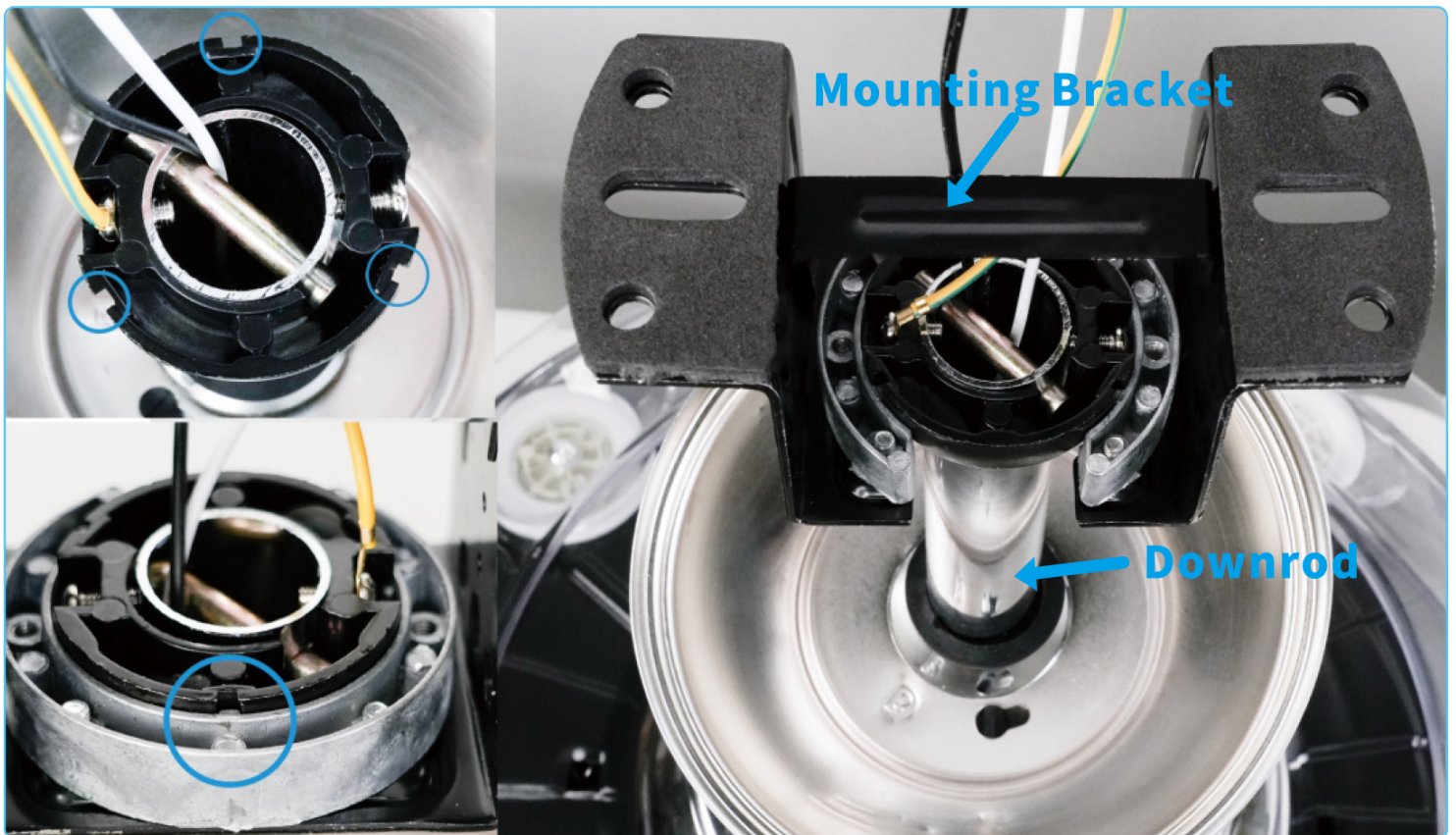


Use a marker to mark the location of the screw holes on the ceiling, then use an electric impact drill to drill holes in the cement ceiling, insert the expansion screws on the Mounting bracket into the holes, and finally fix the expansion screws in the cement ceiling with a wrench.

WOODEN CEILING

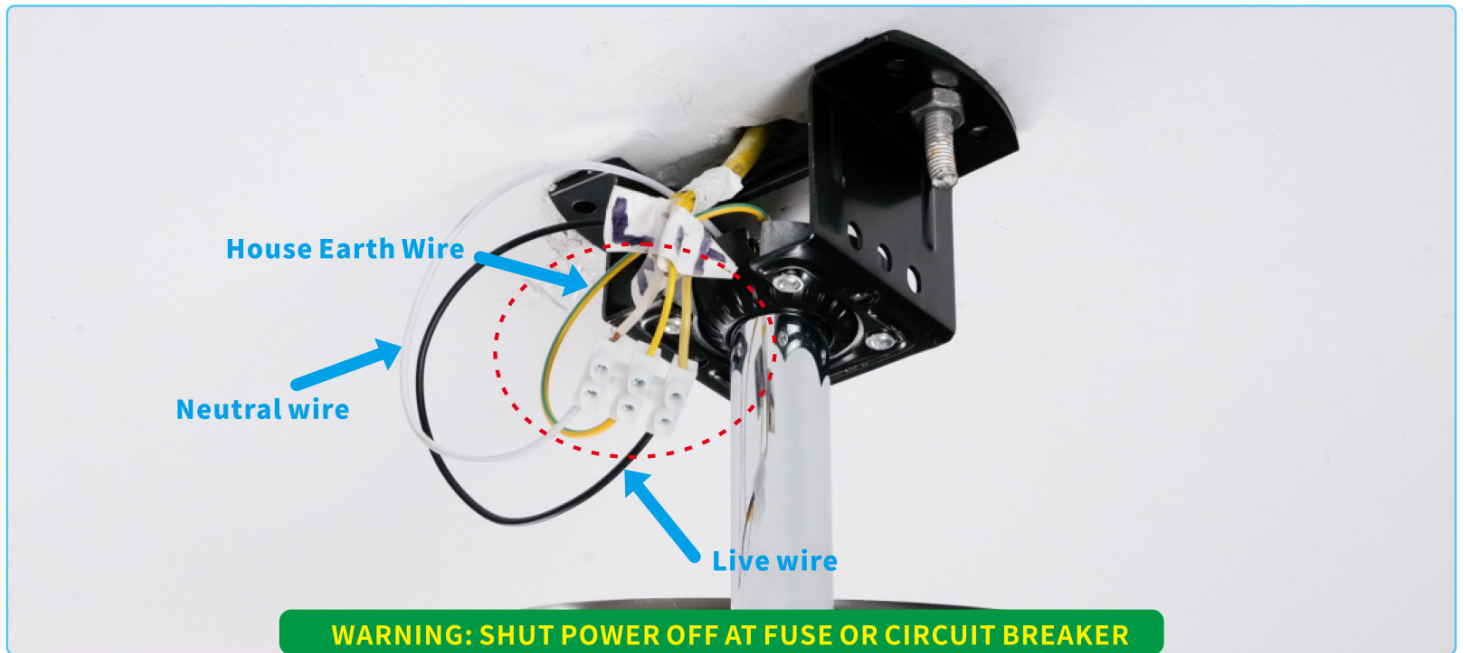


Use an electric drill to screw 4 self-tapping screws into the wooden ceiling to fix the mounting bracket



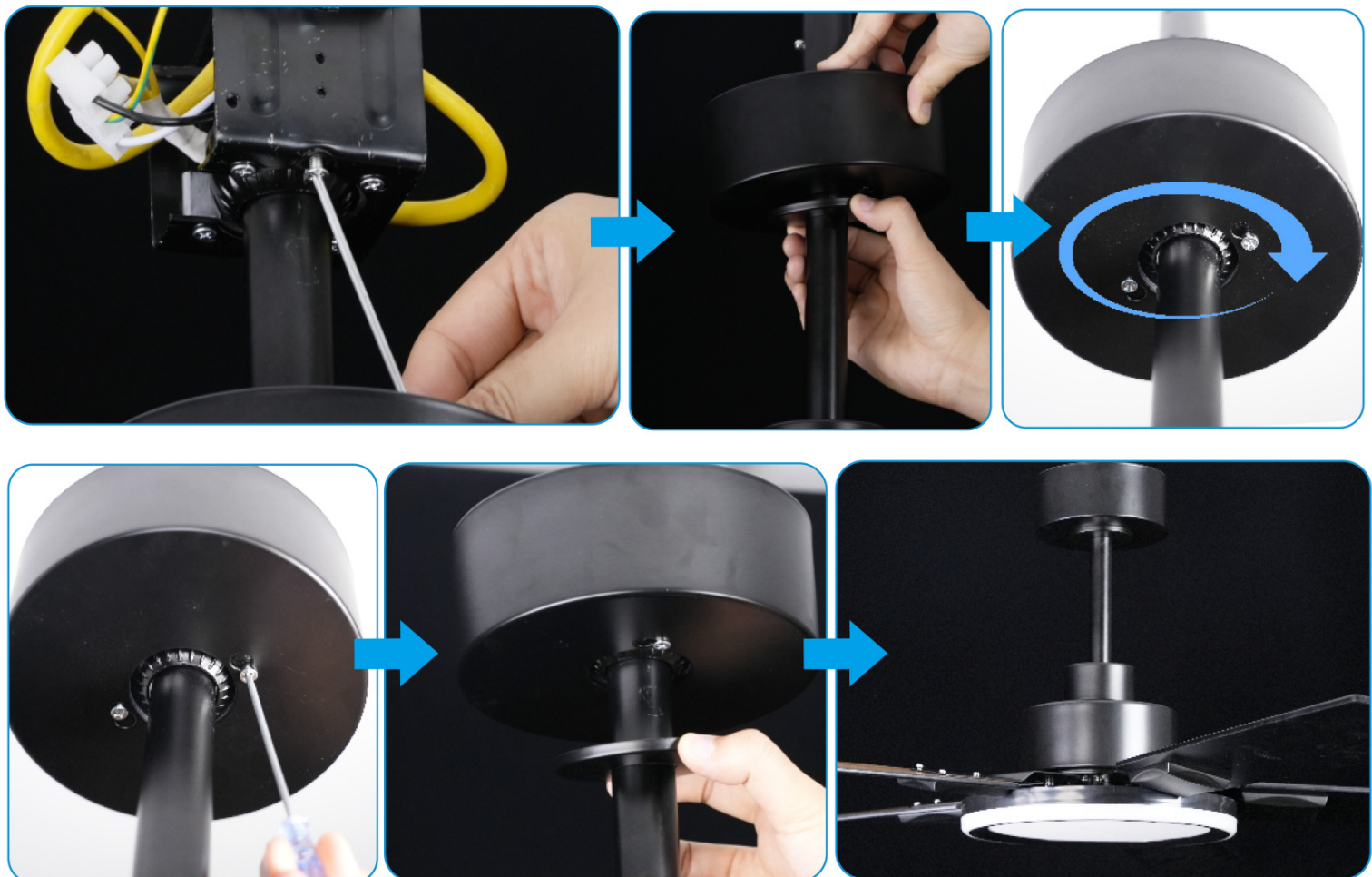
Hang the motor to the ceiling mounting bracket, Mesh the tip of the downrod with the groove of the mounting bracket, and confirm its stability, otherwise it will cause the fan to shake.

Cable connection for ceiling fan light driver



Yellow wire is connected to the earth wire, the black wire connects to the house live wire, and the white wire connects to the house neutral wire (as shown in the diagram)

Then check whether the lamp body works normally. It is recommended to ask a professional electrician to install it.



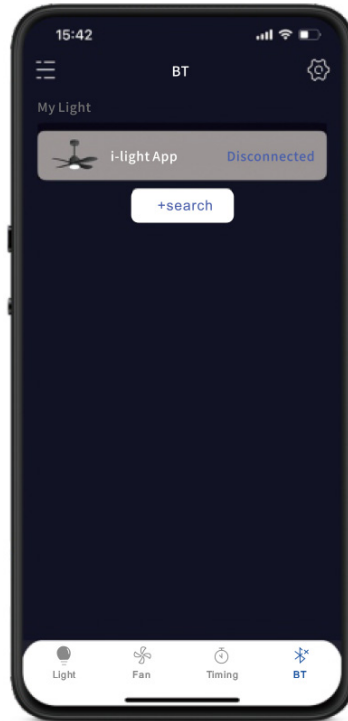
I-LIGHT PRO APP OWNER'S MANUAL (APP CONNECTED CEILING FAN)

1. Scan the QR code to download the "i-light pro APP"

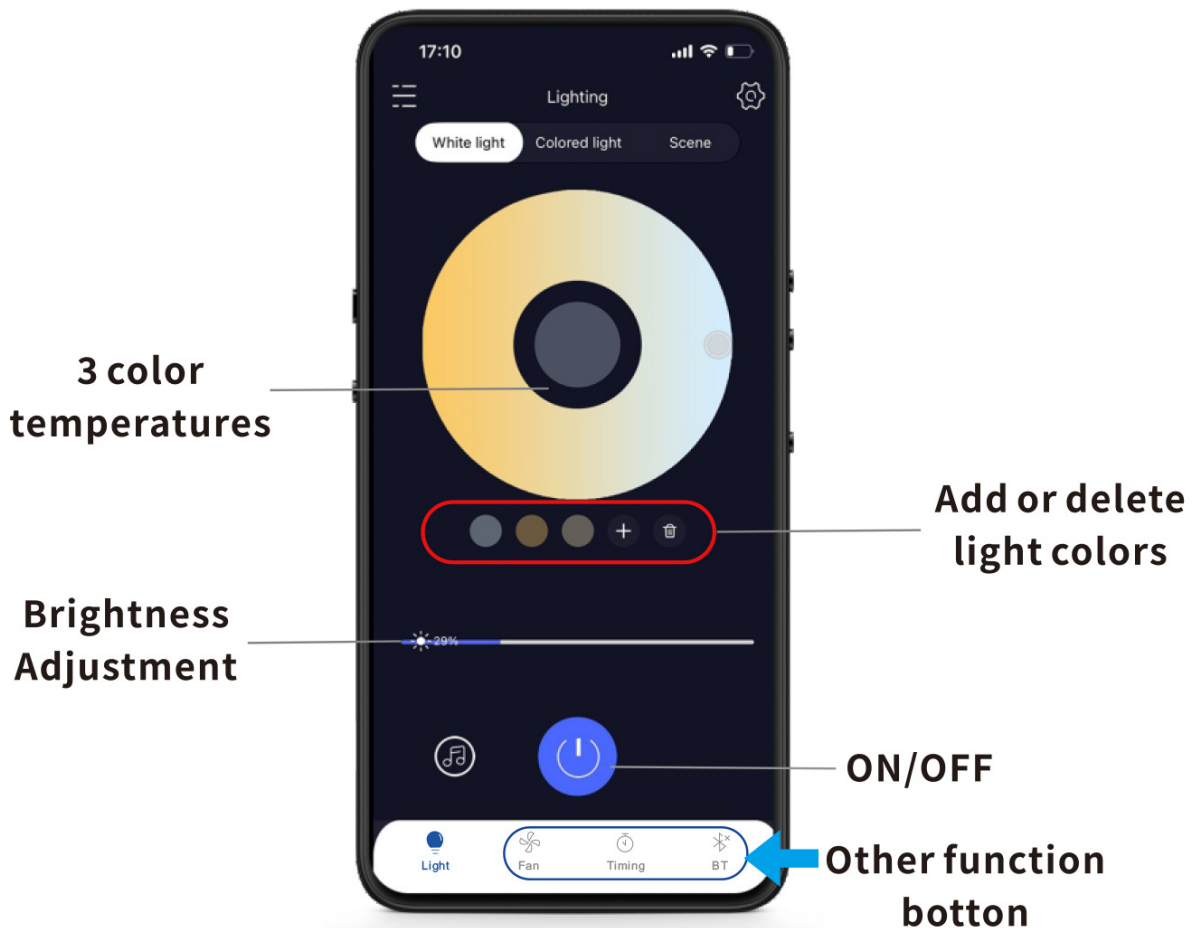


2. Open the app, click "BT" in the lower right corner, and then click "Search"

3. Click and link to "i-light App"

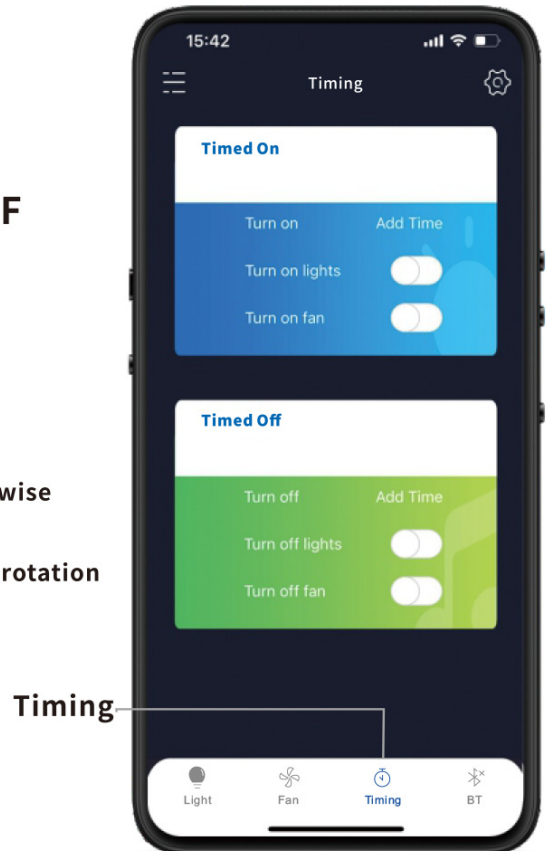
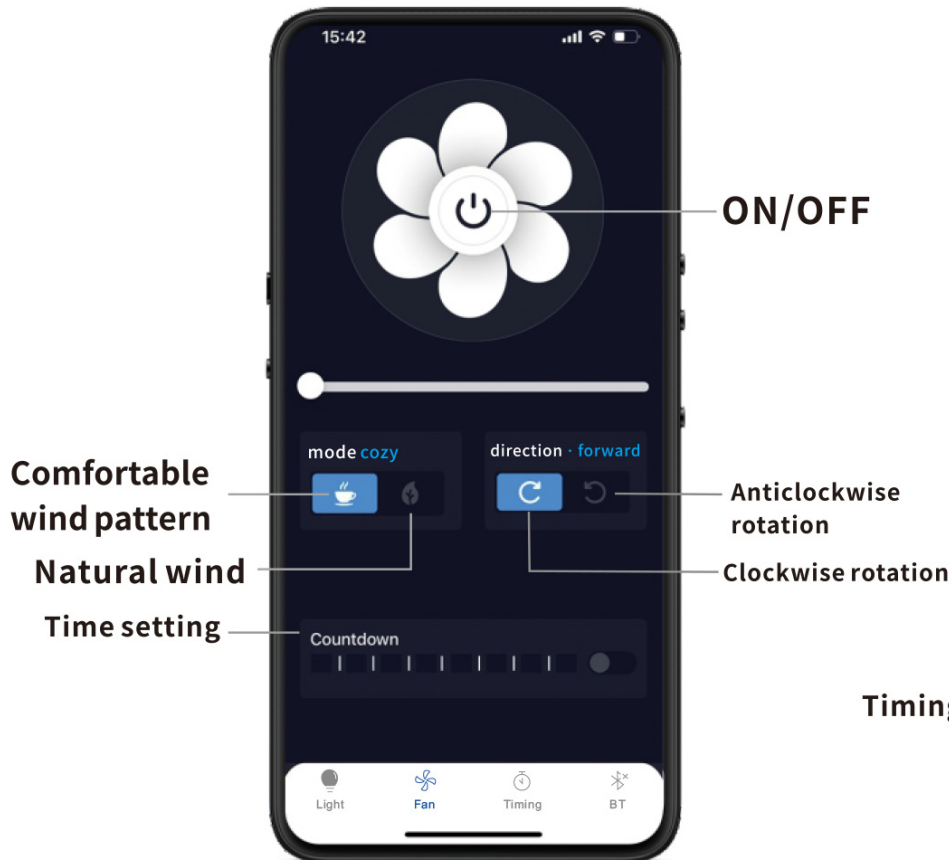
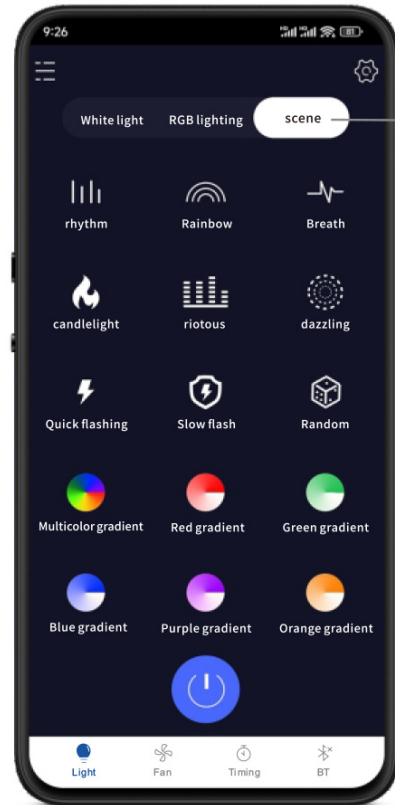


4. You can name the ceiling fan for easy connection



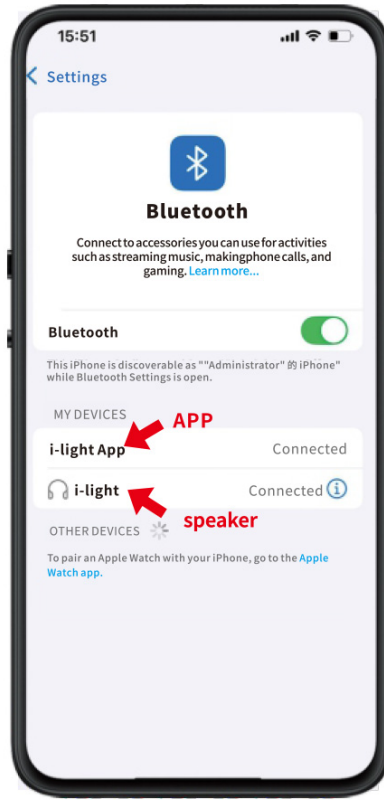
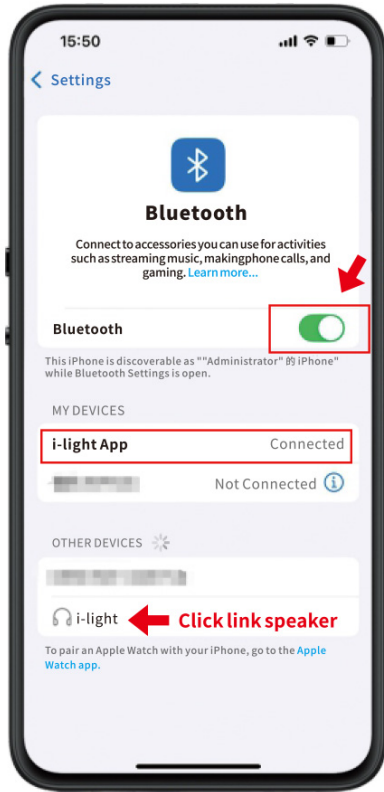
i-light pro APP Owner's Manual

Adapted to various scenes of light



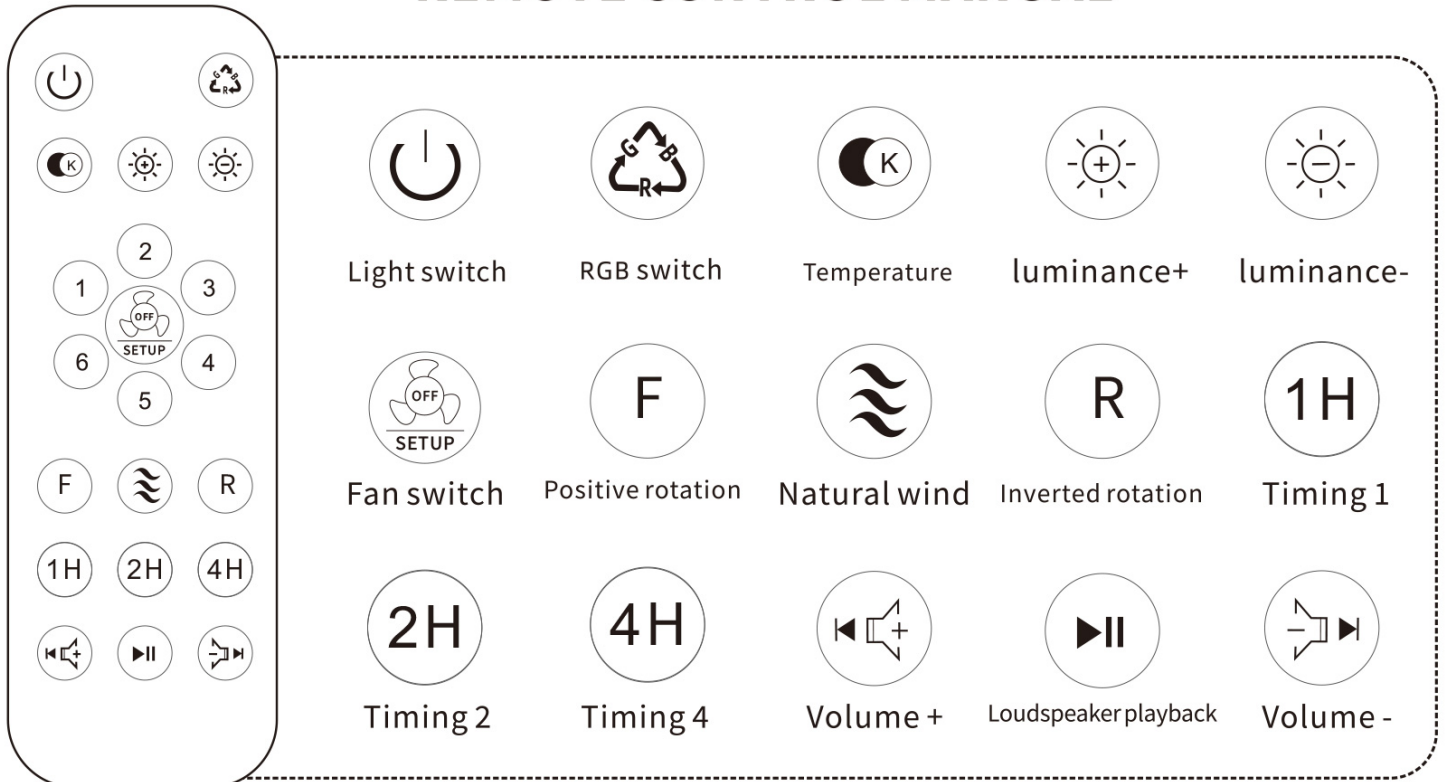
Linked Bluetooth speaker

1. Click on your phone's settings and turn on



Click "i-light", when you hear ding-dong sound, it means the speaker is matched successfully

REMOTE CONTROL MANUAL



Within 5 seconds of turning on the light, press and hold the “” button of the remote control for 3 seconds, the indicator light flashes, which indicates that the connection between the remote control and the lamp has been completed.