

INSTRUCTION MANUAL

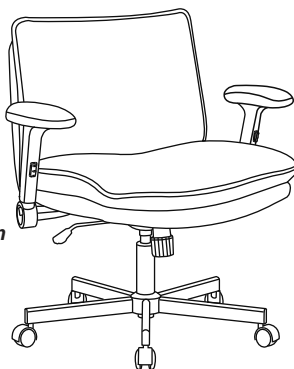
ASSEMBLY GUIDE

Congratulations, you are now the owner of a brand new chair!

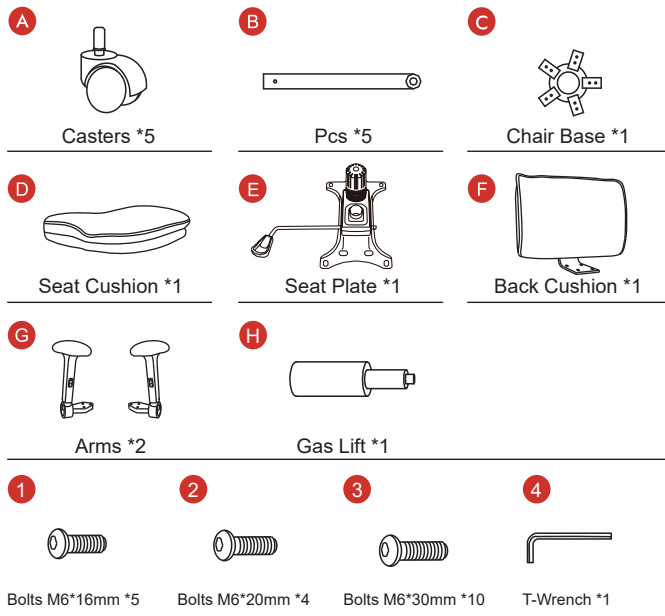
Before enjoy the comfortable chair, you have to put it together. This Assembly Guide will take you through the basic assembly process. To make sure your assembly goes smoothly, please follow the assembly instructions, **and especially the important safety information.**

Also, it is possible to assemble the chair on your own, **having a second person to help you make it even easier.**

Before you begin, please check if there are any missing part from the package. Should there be any issue, please don't hesitate to drop us an email and we'll help you out ASAP.



PACKAGE LIST



ASSEMBLY INSTRUCTION

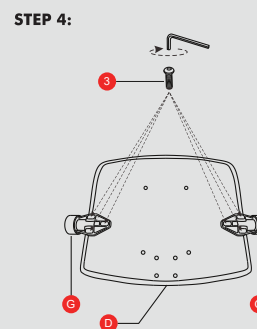
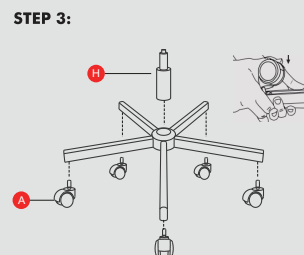
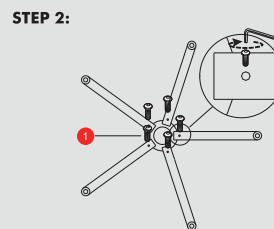
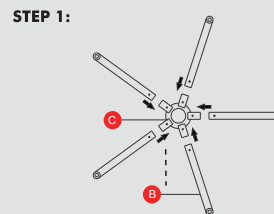
Step 1: Attach base legs (B) to chair base (C).

Step 2: Using five M6x16mm (1) bolts, tighten all the bolts with the wrench.

Step 3: Insert 5 wheels (A) into the slot of the base leg (B). Install gas lift (H) into the five star base (C).

Step 4: Attach the armrests (G) to the Seat (D) with the 6 screws M6*30mm (3).

Note : Arm rests are labeled with an "L" (left) or "R" (right) to show which sides they should be placed on



Step 5: Attach the seat plate (E) to the seat (D) with 4pcs screws M6*20mm (2).

Note : Do not tighten screws completely until all the screws are fixed in the correct position

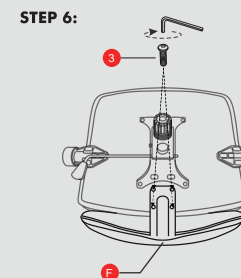
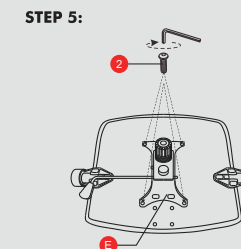
Step 6: Attach the Backrest (F) to the seat (D) with 4pcs screws M6*30mm (3).

Step 7: Place the Seat (D) on the gas lift (H).

Step 8: Complete installation.

CAUTION:


Make sure all bolts and screws are fully tightened before using chair. Lubricate all moving parts and tighten all bolts / screws every 6 month or whenever needed.



Before you go to start, a few points:

 Having a friend to help makes assembly easier

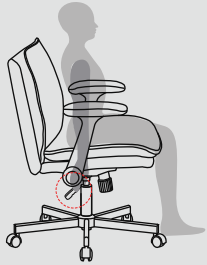
 Mind the important safety information

 Contact us if you have any issue

INSTRUCTION MANUAL

INSTRUCTIONS FOR USE

1 . Seat Height : Paddle-shaped lever on the right side

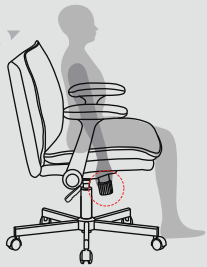


To raise:
While taking your weight off chair, lift lever up.

To lower:
While seated, lift lever up.

* At the proper height, your feet should rest flat on the floor.

2 . Tilt Tension : knob under the seat cushion



To increase tension:
While seated, turn knob forward (toward sign).

To decrease tension:
While seated, turn knob backward (toward - sign).

* Set the tilt tension to control the resistance you feel when leaning back.

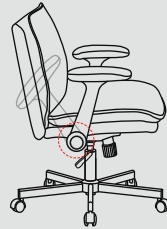
3 . Operating the tilt lockout



To let your chair tilt back, pull the control handle out.

To stop your chair from tilting, sit forward, then push the control handle in.

4 . Multi-functional armrest



Easily flip-up arms saving space



Adjustable up and down to a comfortable height

SAFETY AND MAINTENANCE

- Do not stand on the chair, Do not use the chair as stepladder.
- Use this product for seating one person at a time.
- Do not use the chair unless all bolts and screws are firmly secured.
- Avoid contact with sharp objects to prevent puncturing the fabric.
- Every 6 months, check all bolts and screws to ensure they are tight.
- To clean, spot clean only using a damp towel and mild cleaner, first test on a small, obscure area of fabric.
- Chair weight limit not to exceed 300 lbs.

SAFETY INFORMATION



Sit in the center of the chair, with your back to the backrest



Do not sit at the front edge of the chair



Do not stand on the chair



Do not use the chair with more than one person



Do not push the chair around when a person is sitting in it



Do not push down on the backrest when a person is reclined



Do not place all your weight on the backrest only

LIMITED WARRANTY

We promise to repair or replace a new chair that is found to be defective in material or workmanship within one (1) year from the date of original purchase so long as you, the original purchaser, still owns it. This is your sole and exclusive remedy. This warranty is subject to the provisions below.

EXCLUSIONS:

This warranty does not apply and no other warranty applies to:

- Normal wear and tear, which are to be expected over the course of ownership.
- Misuse, abuse or excessive use of the product.
- Modifications or attachments to the product that are not approved by us.
- Products that were not installed, used, or maintained in accordance with product instructions and warnings.
- Products used for rental or commercial purposes.
- Damage caused by the carrier in-transit is handled under separate terms.

Seating Usage: Normal use for seating is identified as the equivalent of a single shift, forty- (40) hour workweek. To the extent, a seating product is used in an exceeding manner, the applicable warranty period will be reduced in a pro-rata manner.

Some retailers might have custom models imported direct from the factory and therefore are not supported by our local service team because we don't have the correct parts, please contact your retailer directly for support. If you have any question about that we will be happy to assist and identify those items.

RETURN POLICY :

We adopt a 30 days return policy which means that all products purchased on this website may be returned to us within the timeframe. You need to contact us within 30 days after the product (s) came into your possession and the product (s) must be returned to us without any undue delays.

Returned products must be returned in the same condition as they were sent and they must be sent in its original packaging.

If the product is not faulty, (i.e. if you change your mind or if you are unhappy with the product for some other reason), the cost of shipping will fall on you. And it is your responsibility that the package arrives safely to us so we recommend that you use a courier service where it is possible to track the shipment.

If the product is faulty when you receive it please contact us and we will help you out.

We reserve the right to give a partial refund in cases when the product (s) is not in an unused condition, is damaged or have missing parts not due to our error.

HOW RETURNS WORK :

Contact us through the contact form on our website and attach the invoice to the message as a proof of purchase. And please also write the reason for return.

We will then get back to you as soon as possible with information about where to send the product (s).

As soon as we have received the product (s) and made an inspection we will inform you of our decision.

If a refund is approved we will automatically credit the refund to your credit card or original method of payment.

Before you go to start, a few points:



Having a friend to help makes assembly easier



Mind the important safety information



Contact us if you have any issue