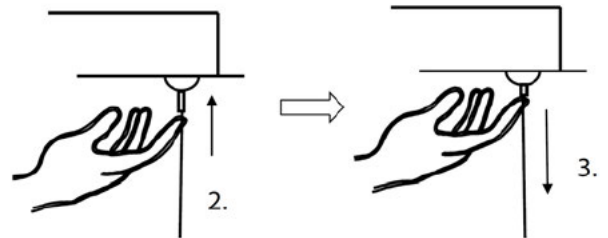


The 2 support wires attached to the fitting allow adjustment of the fitting, the height can either be reduced or increased.

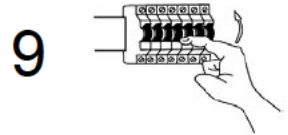
1. Hold each wire in turn and gently push upwards to the desired height, the support wire freely move into the ceiling can.

If required the fitting can be lengthened back to its original height.





2. Push the 2 small metal release pins in individually, this will release the clamp and allow each support wire to become free to lengthen.

3. The weight of the fitting is normally sufficient to lower each support wire, however should the cable not move freely, gently hold the support wire whilst the pushing and release pin and pull down on the cable.



9

## SAFETY INFORMATION: (Please retain for future reference)

- Always turn off the mains supply before commencing the installation of this fitting .
- This is a Class 1 product and does requires an Earth connection  – 230 (240) Volts – 50Hz AC.
- This product must be installed in accordance with the national building regulations, if in doubt consult a qualified electrician.
- This fitting is suitable for installation in Indoor locations only . 
- Do not mount the fitting in a damp atmosphere.
- The Luminaire should be positioned so that prolonged staring into the luminaire at a distance closer than 0.2m is not expected.
- Do not stare at the operating lamp .
- Do not cross the wires during use .
- Ensure sufficient access to the fitting to enable safe maintenance.

### LED INFORMATION:

- We recommend LED lamps only.
- Do not exceed the maximum wattage and bulb type stated on the lamp holder.
- This fitting is suitable for dimming when use dimmable LED bulbs.

### ADDITIONAL INFORMATION:

- The fitting has a 'rise and fall ' mechanism to allow height adjustment. To shorten the fitting hold each wire in turn and gently push upwards to the desire height, the support wire will freely move into the ceiling can. If required the fitting can be lengthened back to the original height, push the 2 small metal release pins in individually, this will release the clamp and allow each support wire to become free to lengthen.

### AFTERCARE AND MAINTENANCE:

- Always disconnect power supply when servicing or cleaning.
- Clean only with a dry or slightly damp cloth.
- Do no use any abrasive cloths or cleaners as this may damage the product

