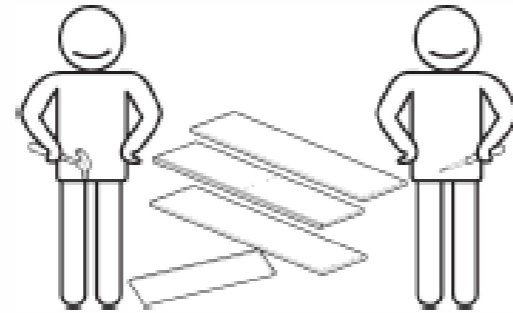
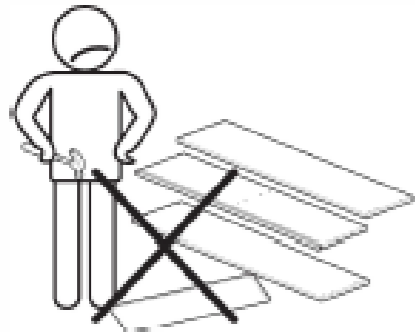
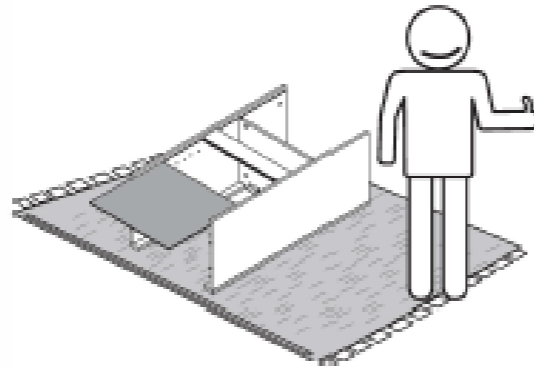
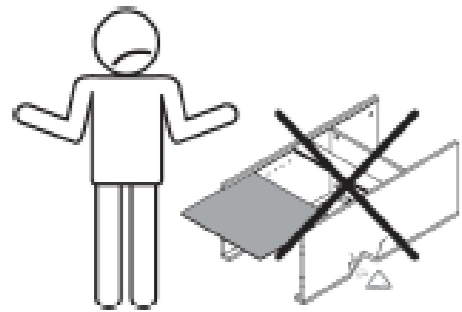


# END TABLE

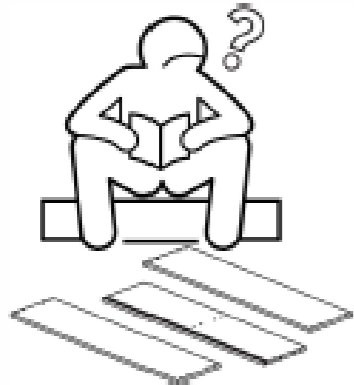
## ASSEMBLY INSTRUCTIONS



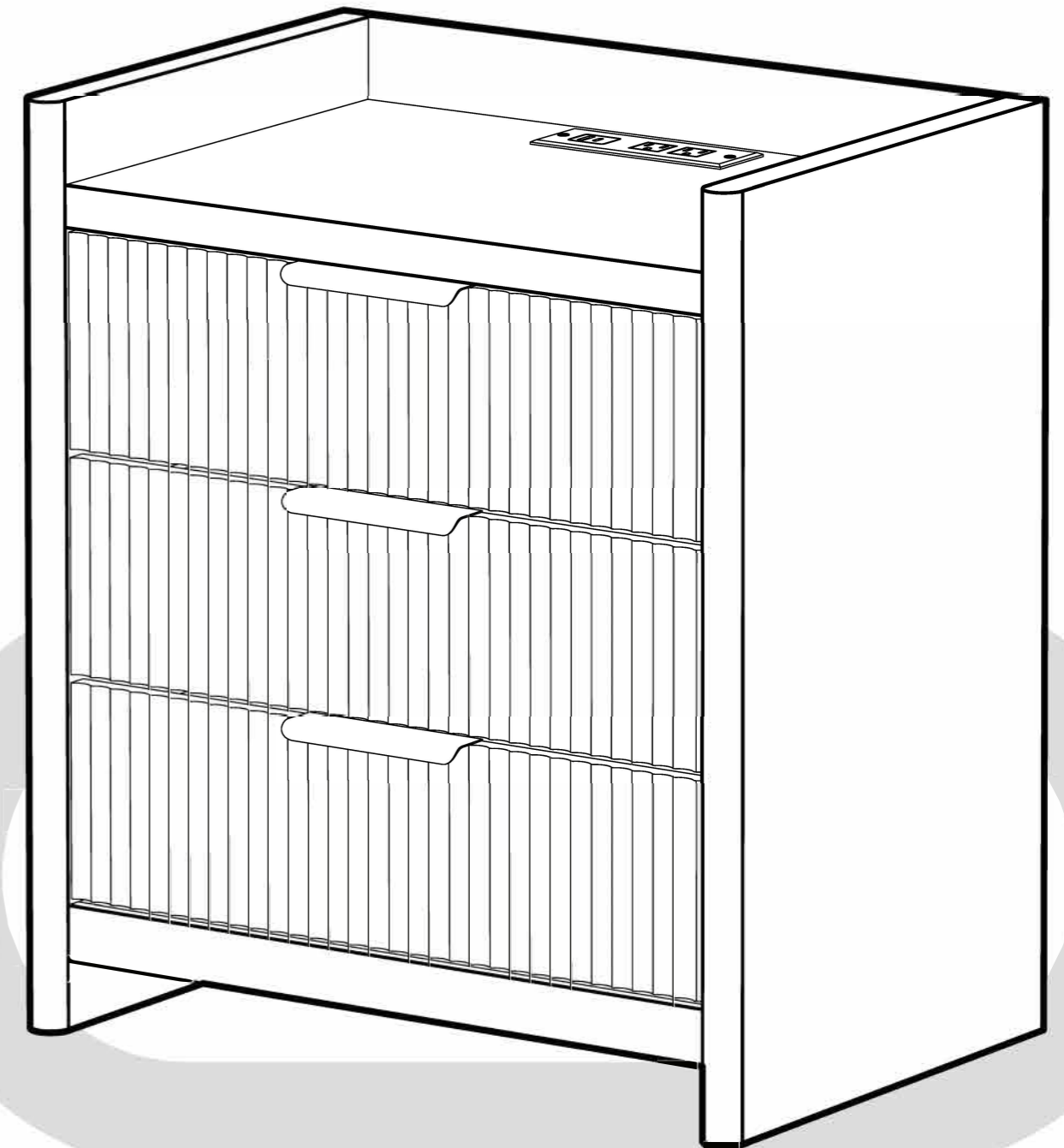
We recommend at least 2 people for the assembly.



To prevent any damage during assembly, place a mat under the pieces.

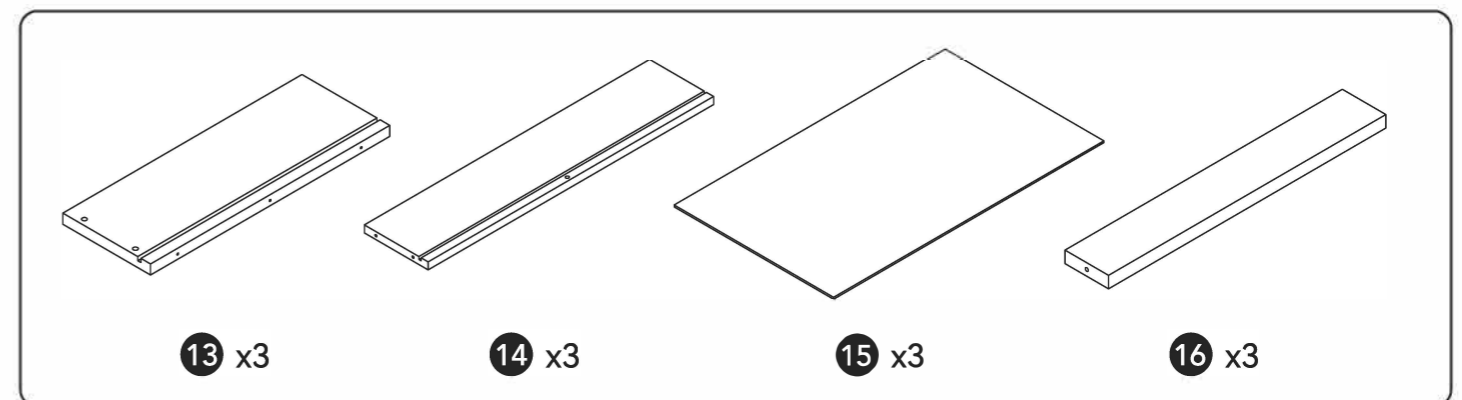
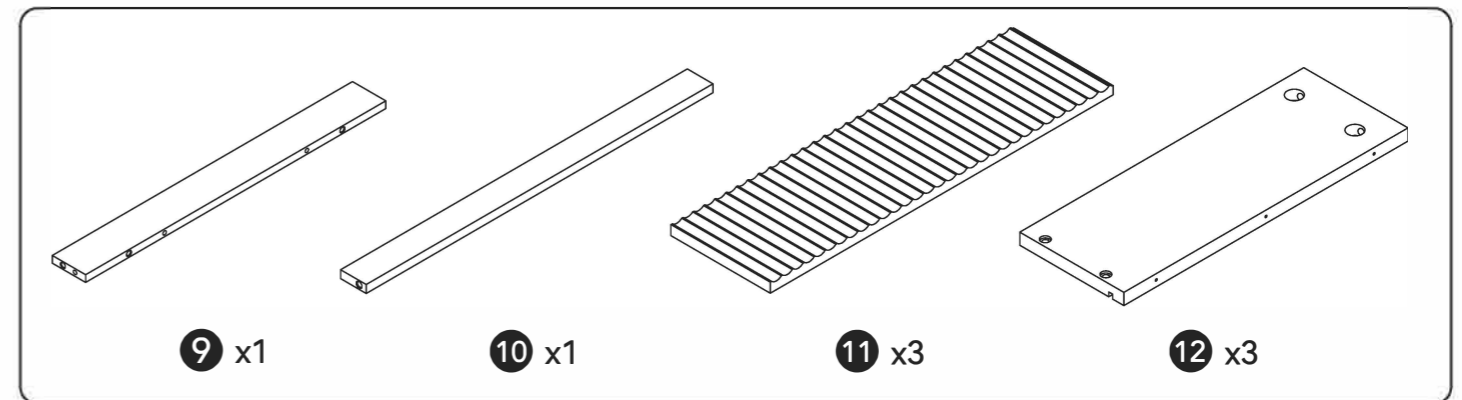
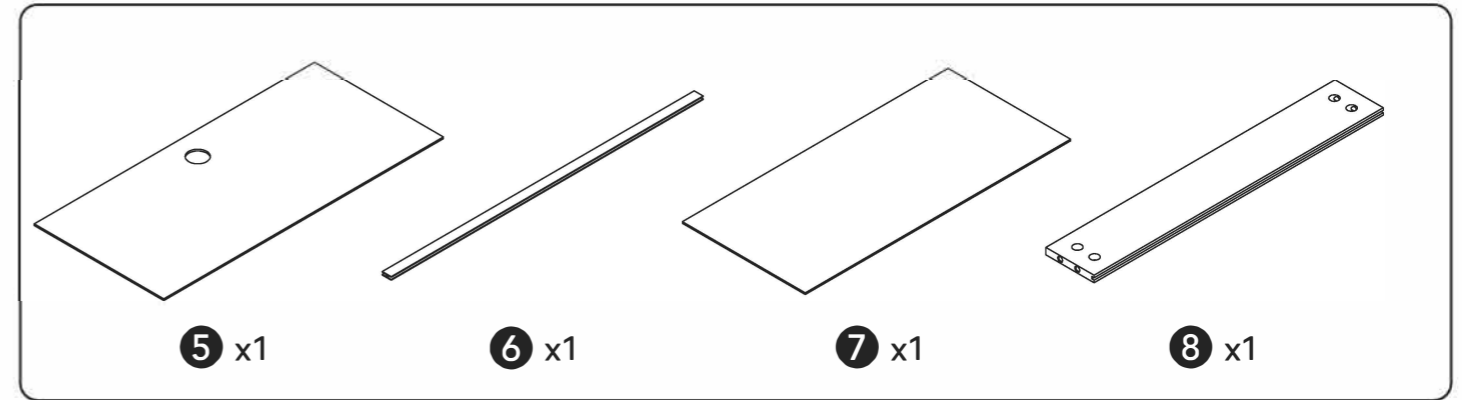
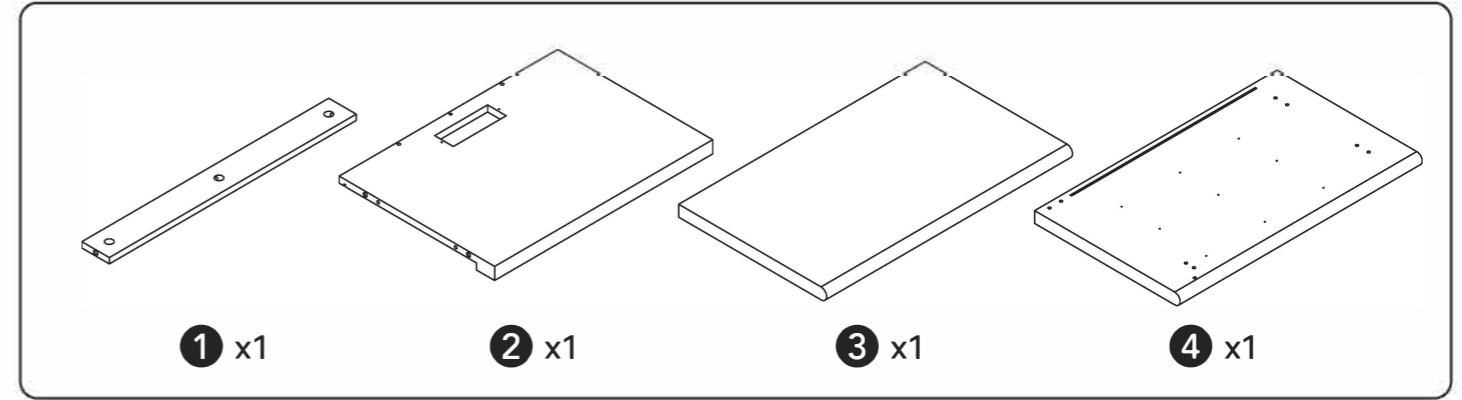
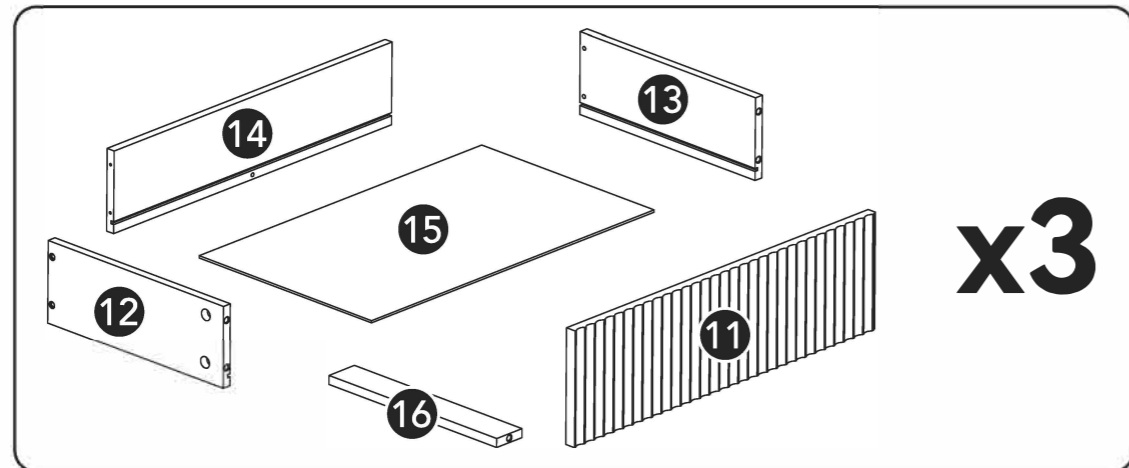
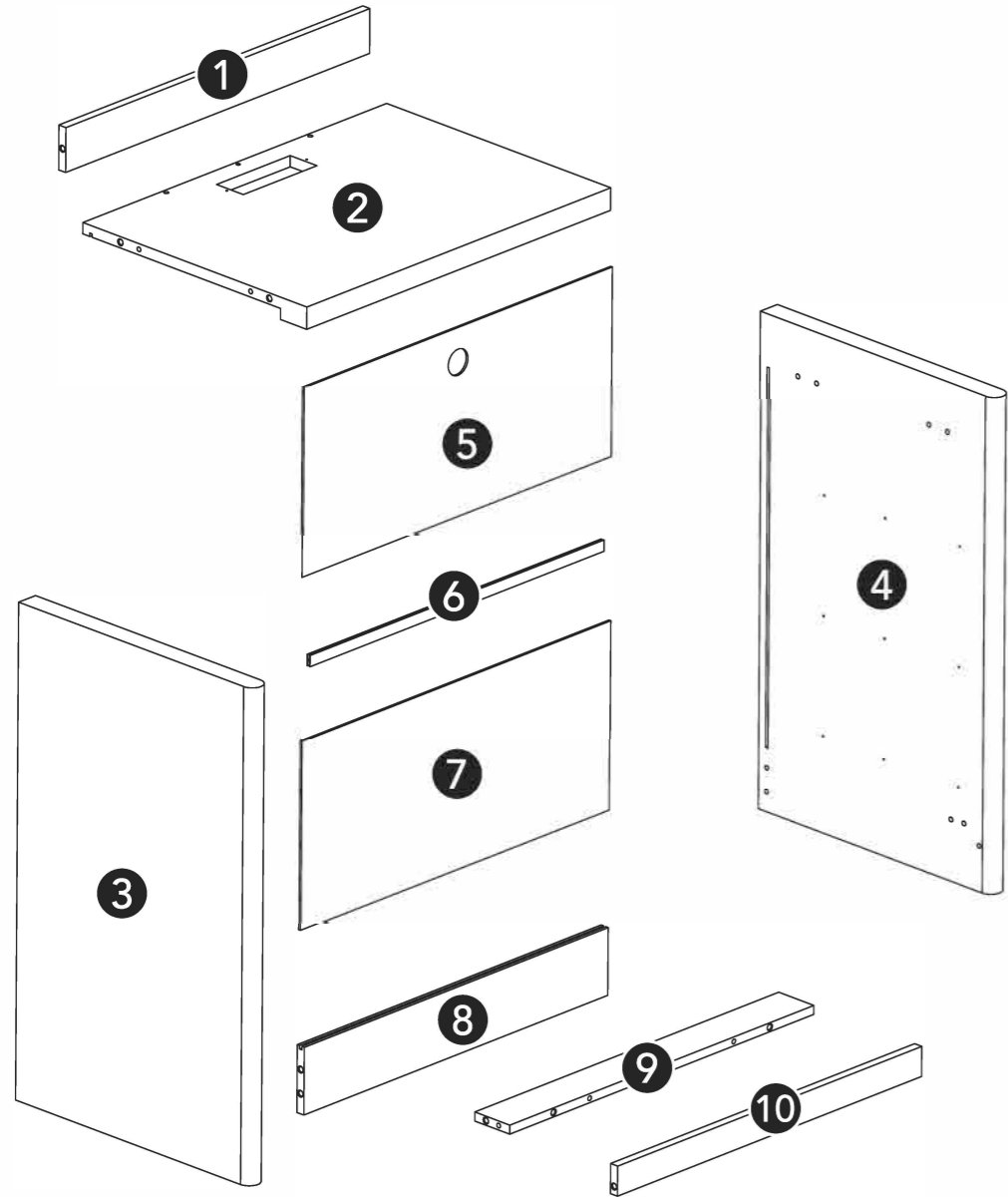


Any questions concerning assembly, contact us.




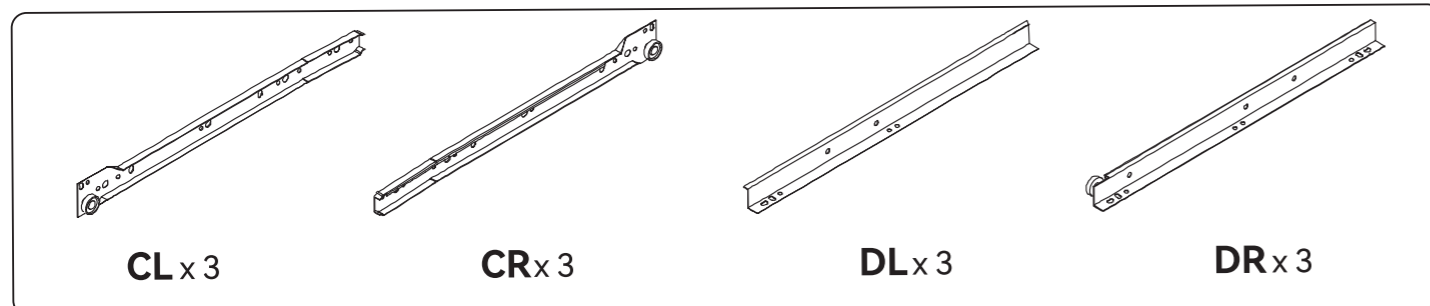
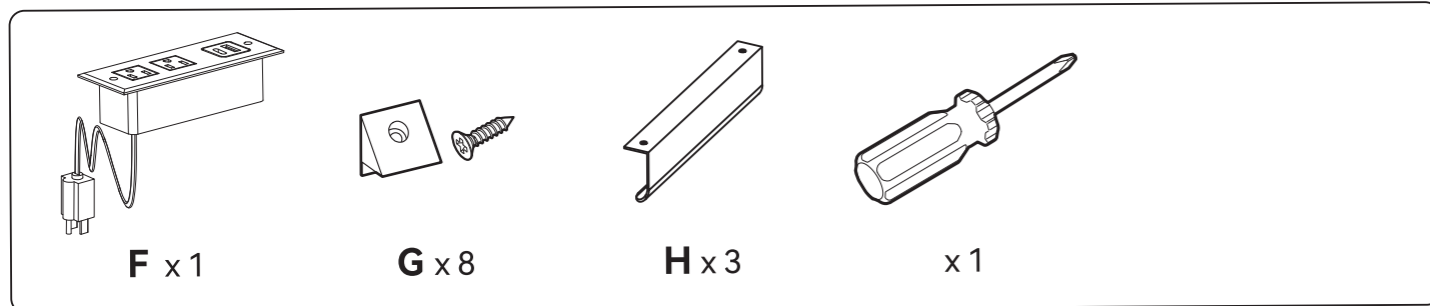
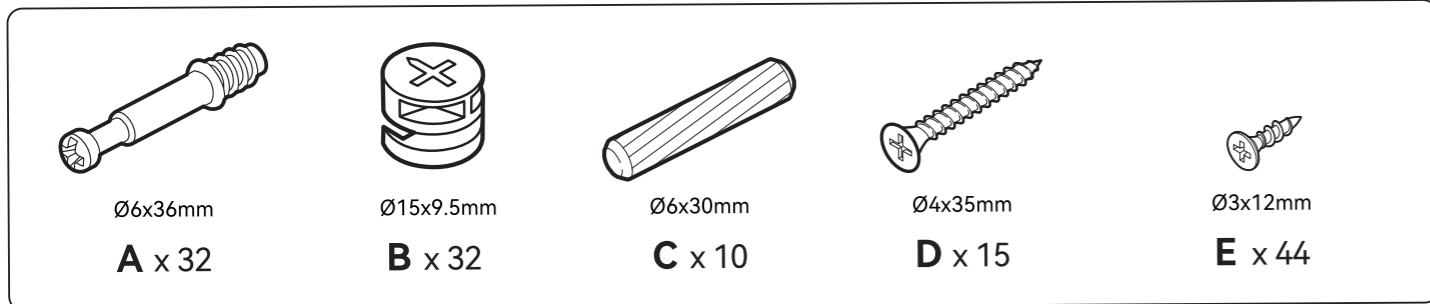
# PARTS DIAGRAM

Check if all parts and hardwares are included. Contact us if there is any part missing or damaged.




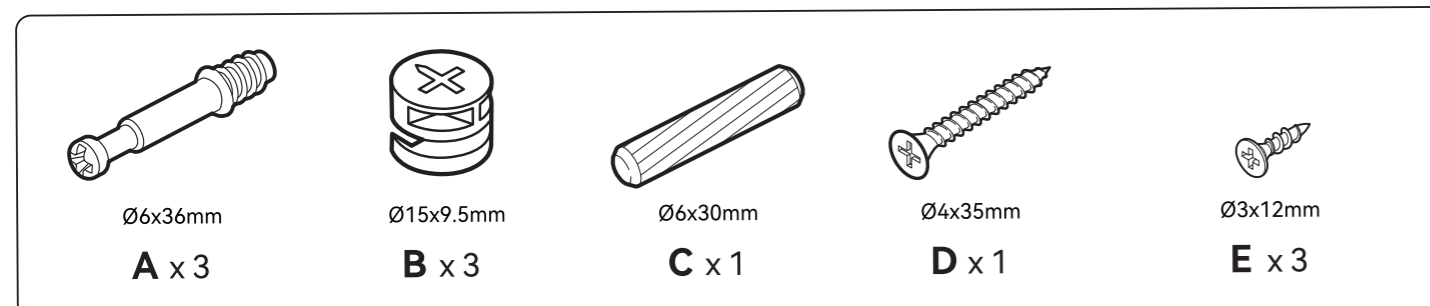
# HARDWARES

 The spare parts are the additional parts provided in case of missing or damaged ones. Keep the spare parts and tools for future use.




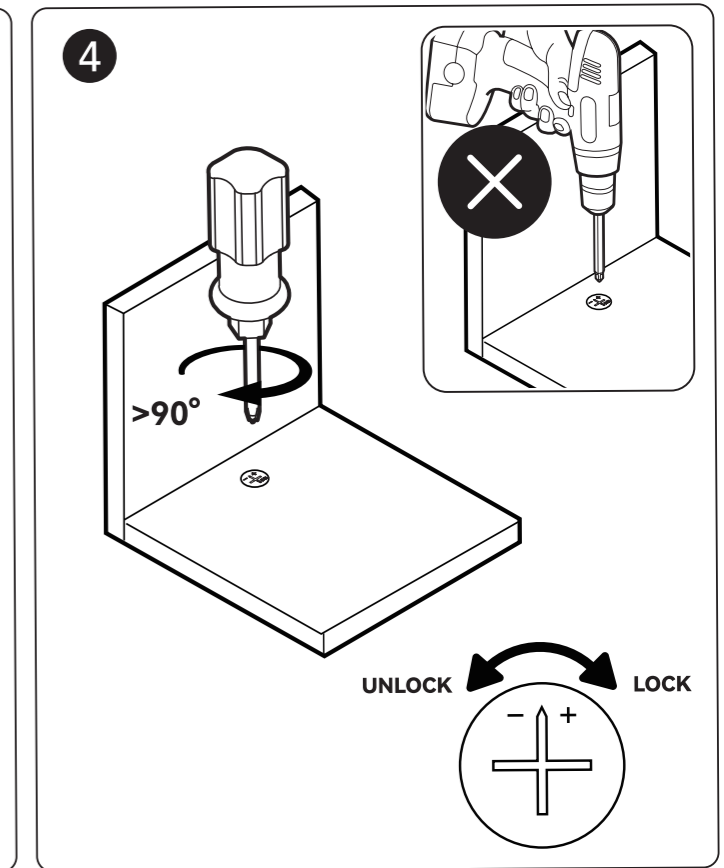
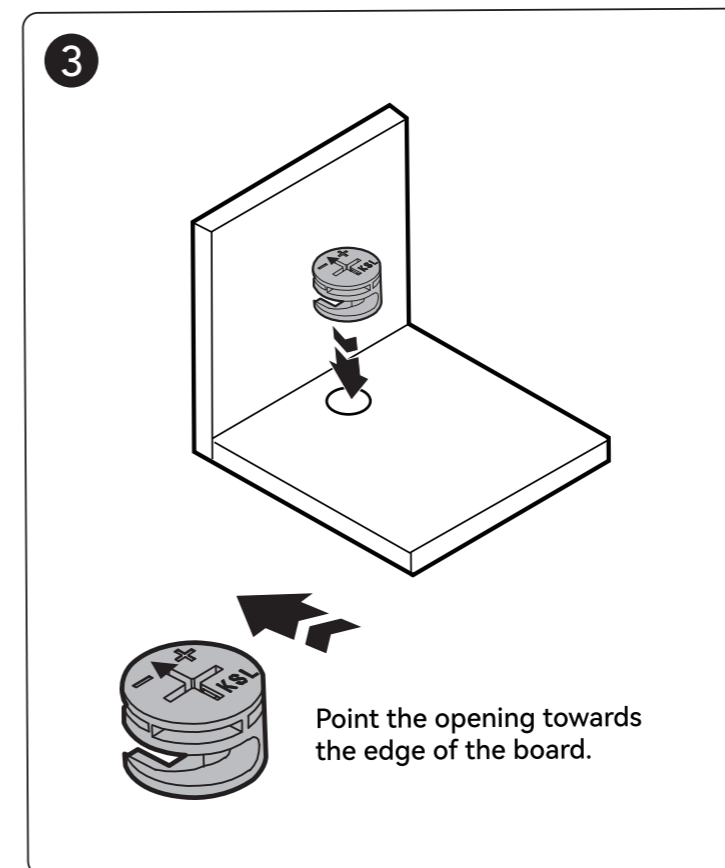
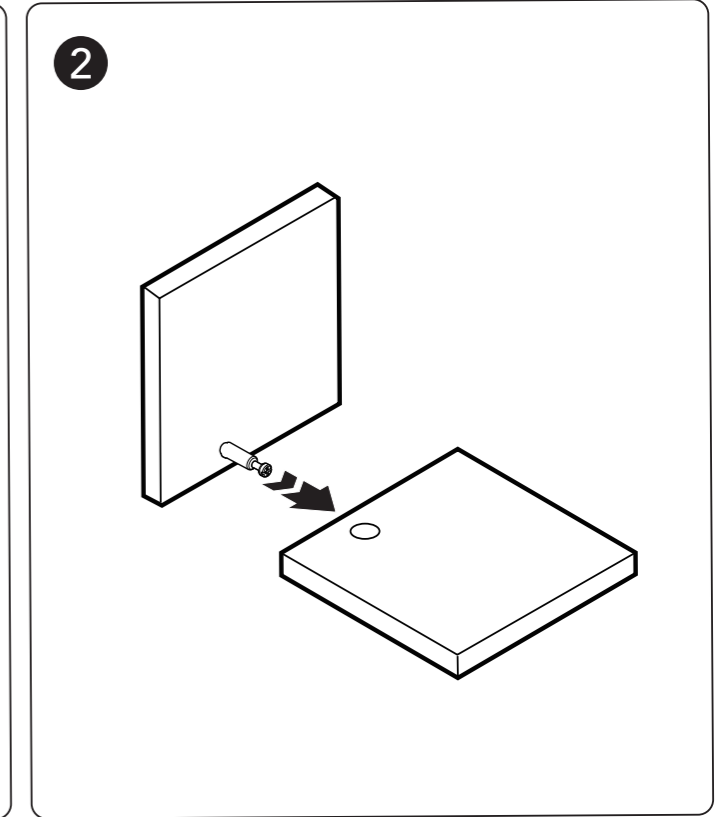
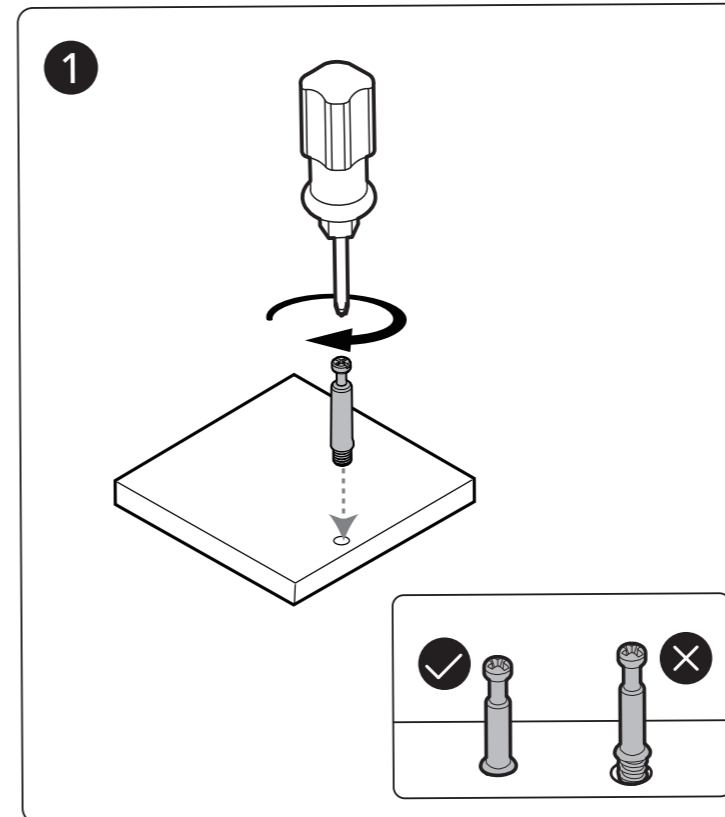
# SPARE PARTS

 The spare parts are the additional parts provided in case of missing or damaged ones. Keep the spare parts and tools for future use.



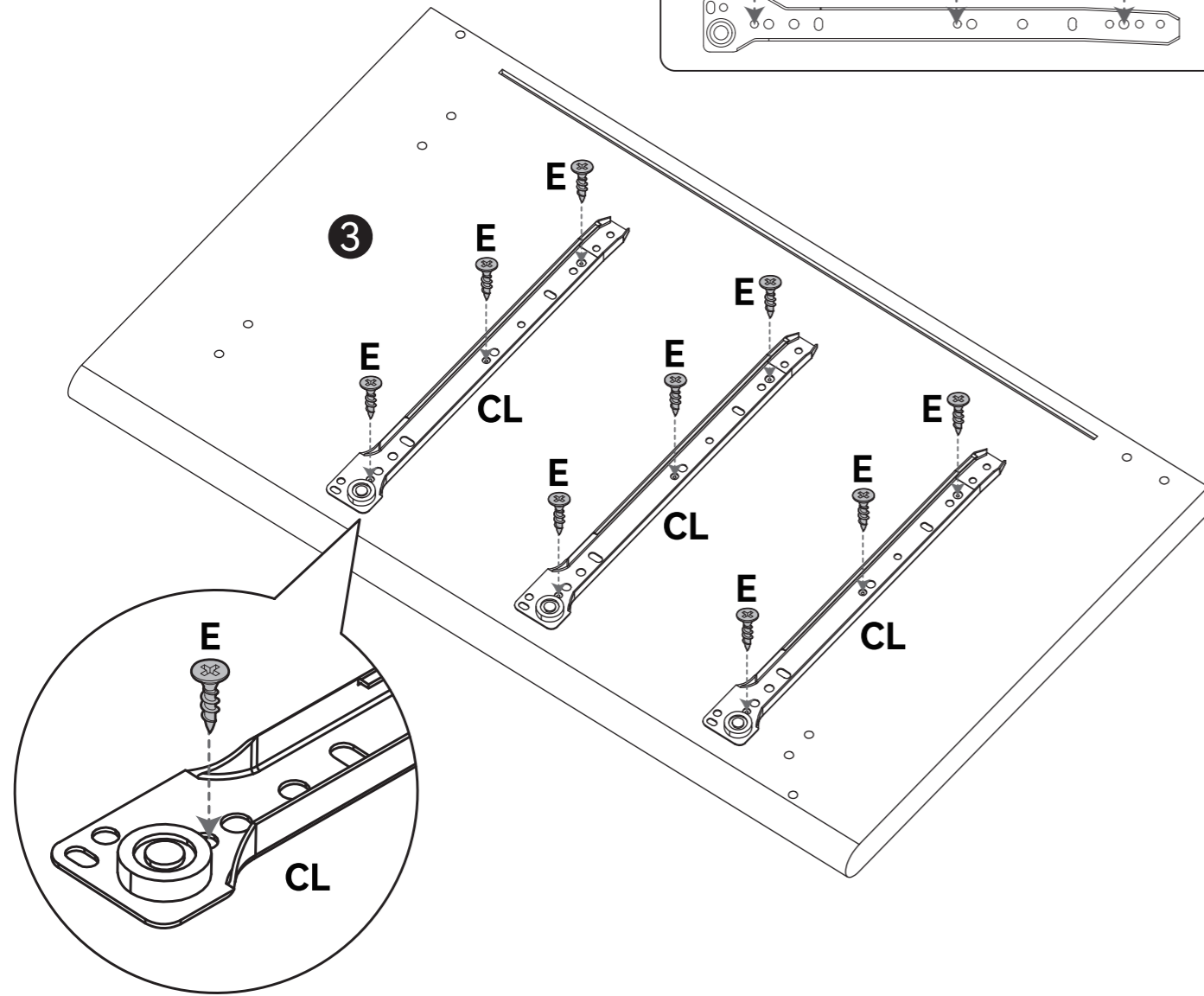
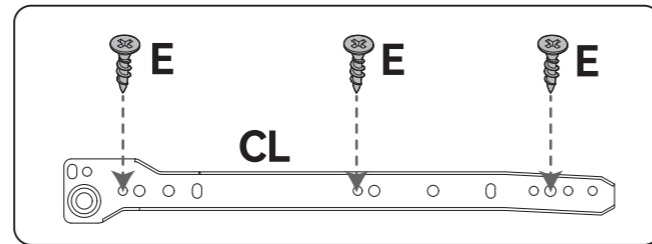
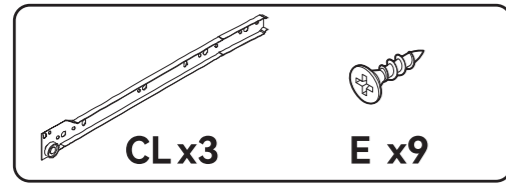
# CAM LOCK FASTEN SYSTEM

 Insert the cam bolt into the hole, then insert the cam lock and tighten.

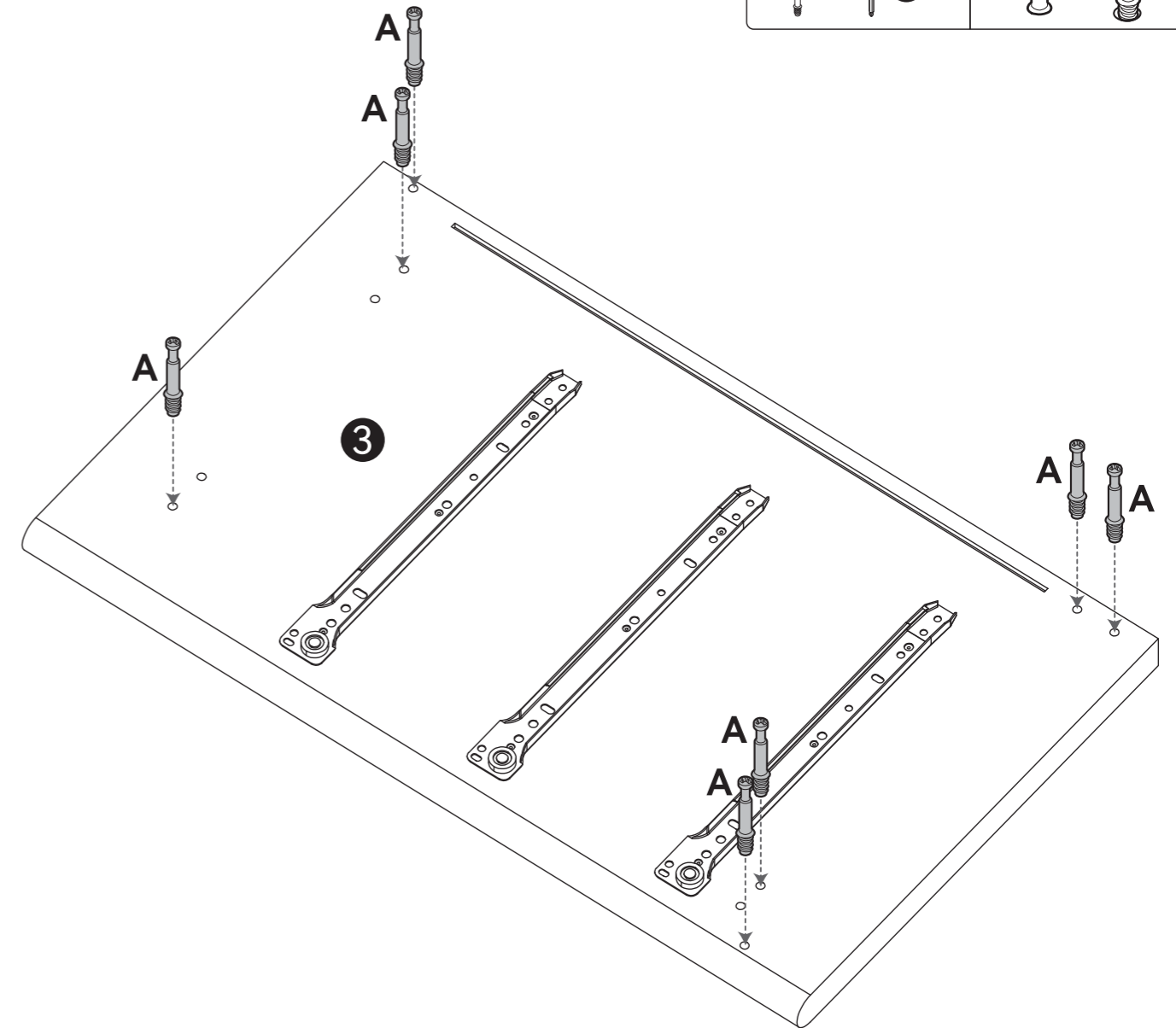
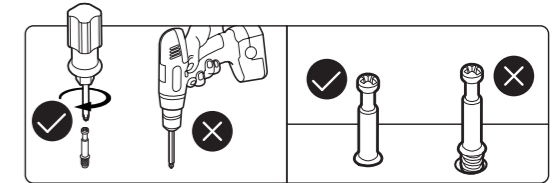
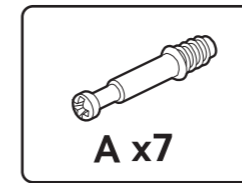


# ASSEMBLY

1

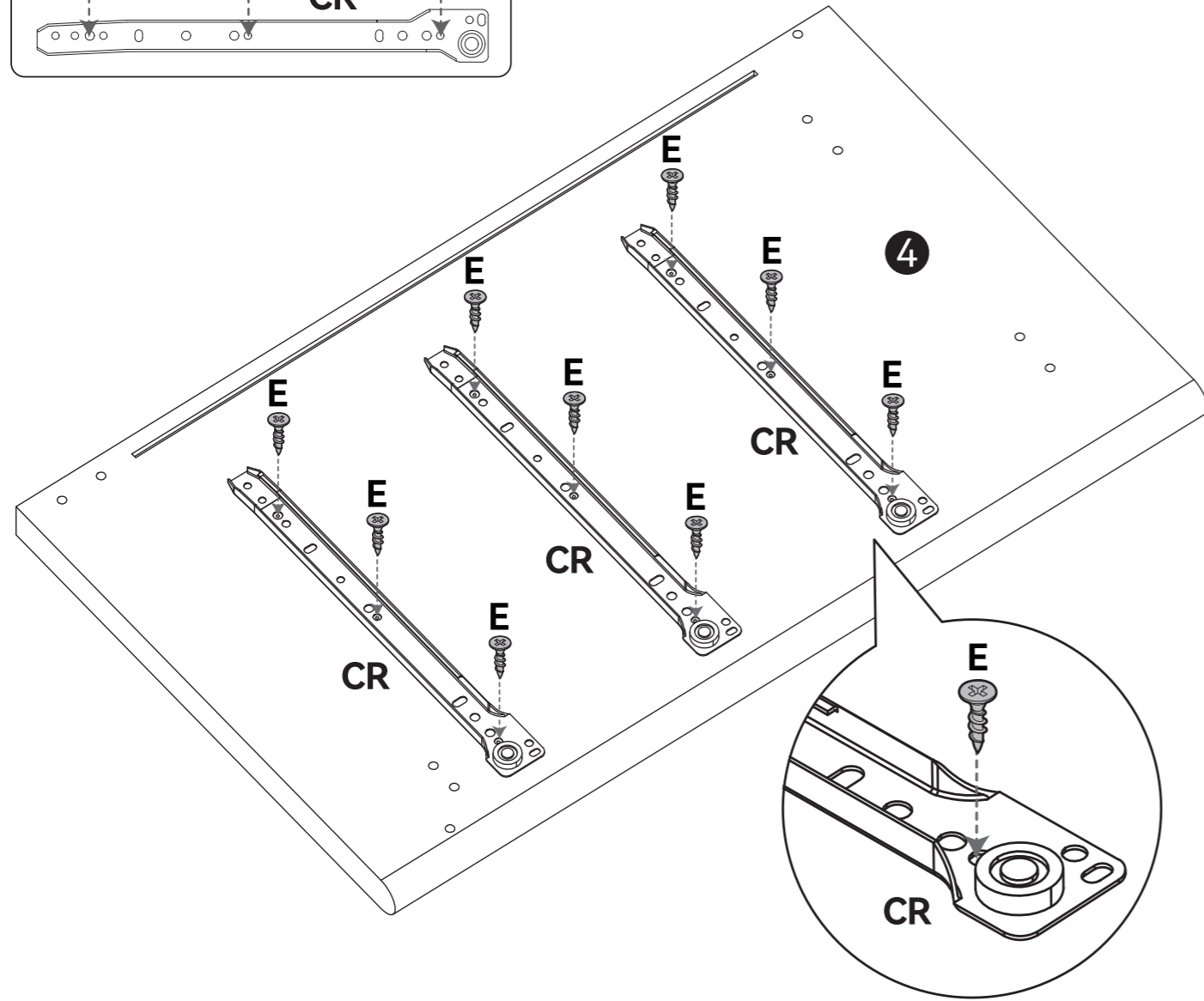
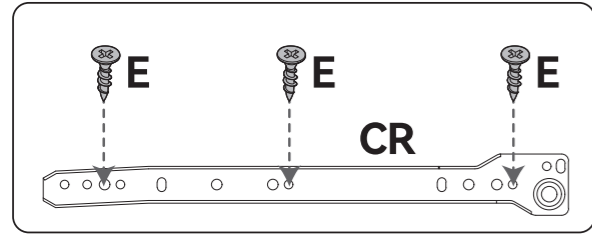
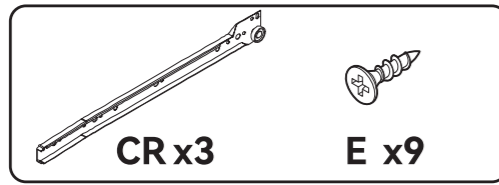


2



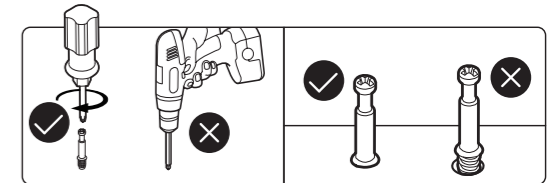
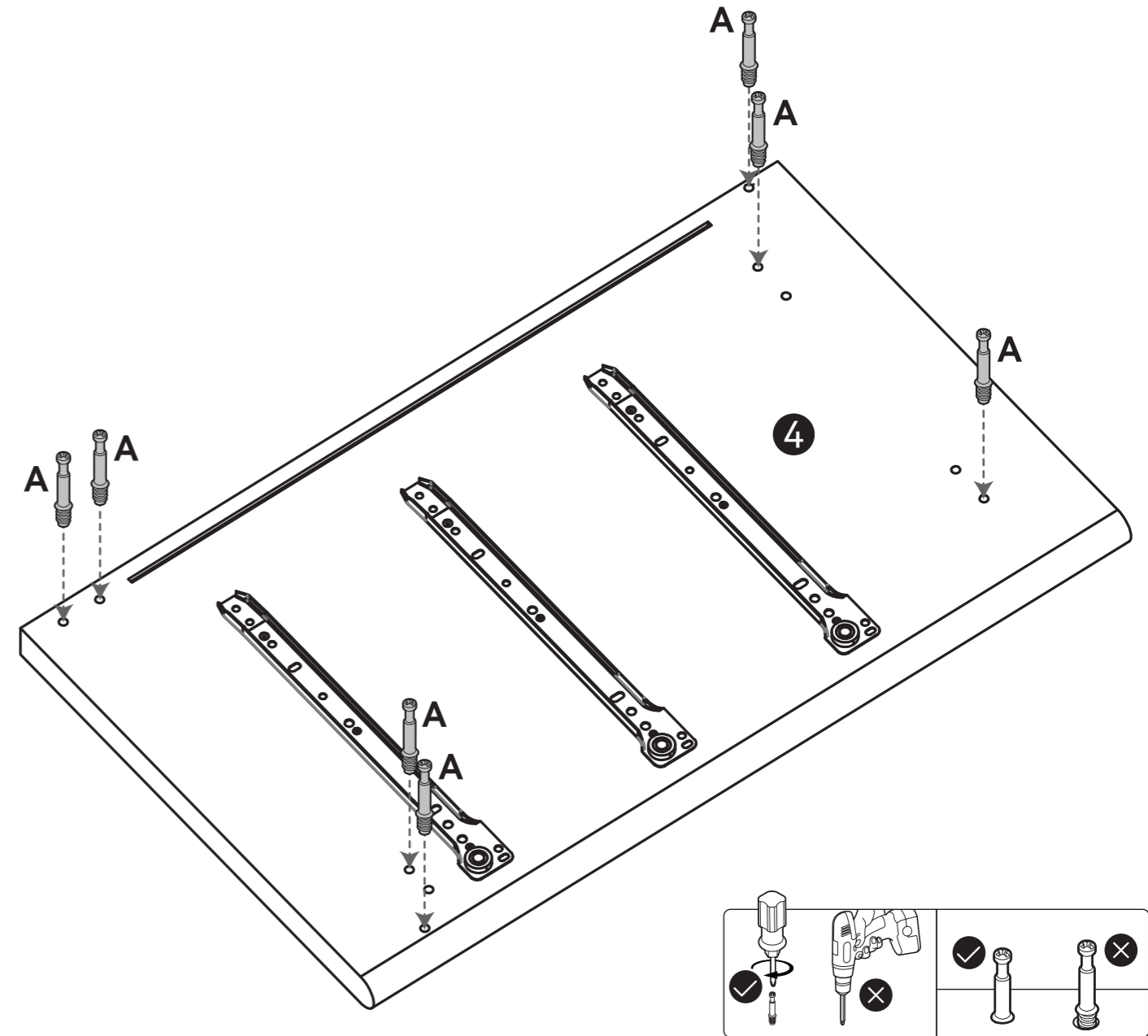
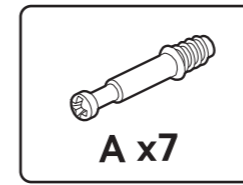
During installation, align the first hole of the slide rail with the pilot hole on the board.

# 3

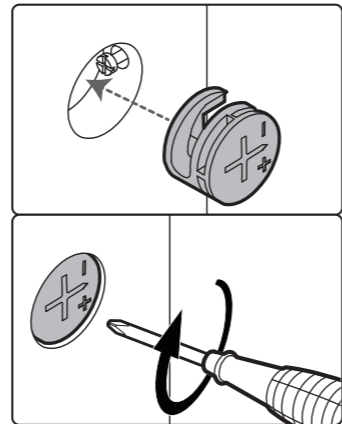
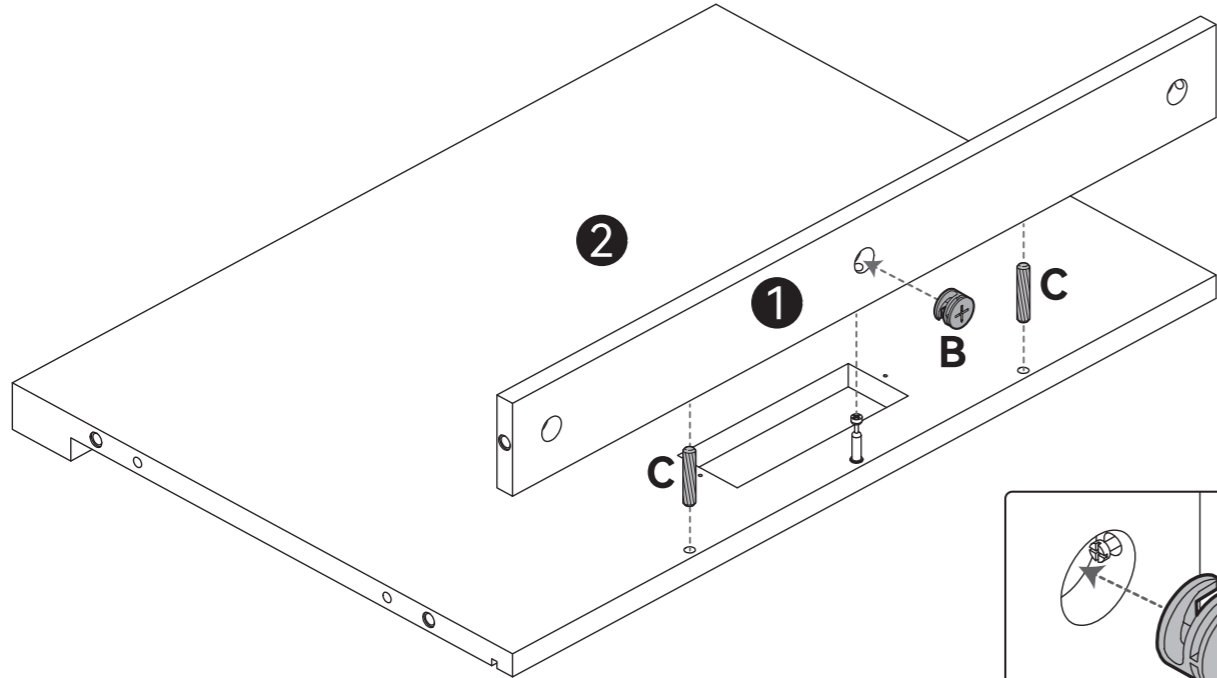
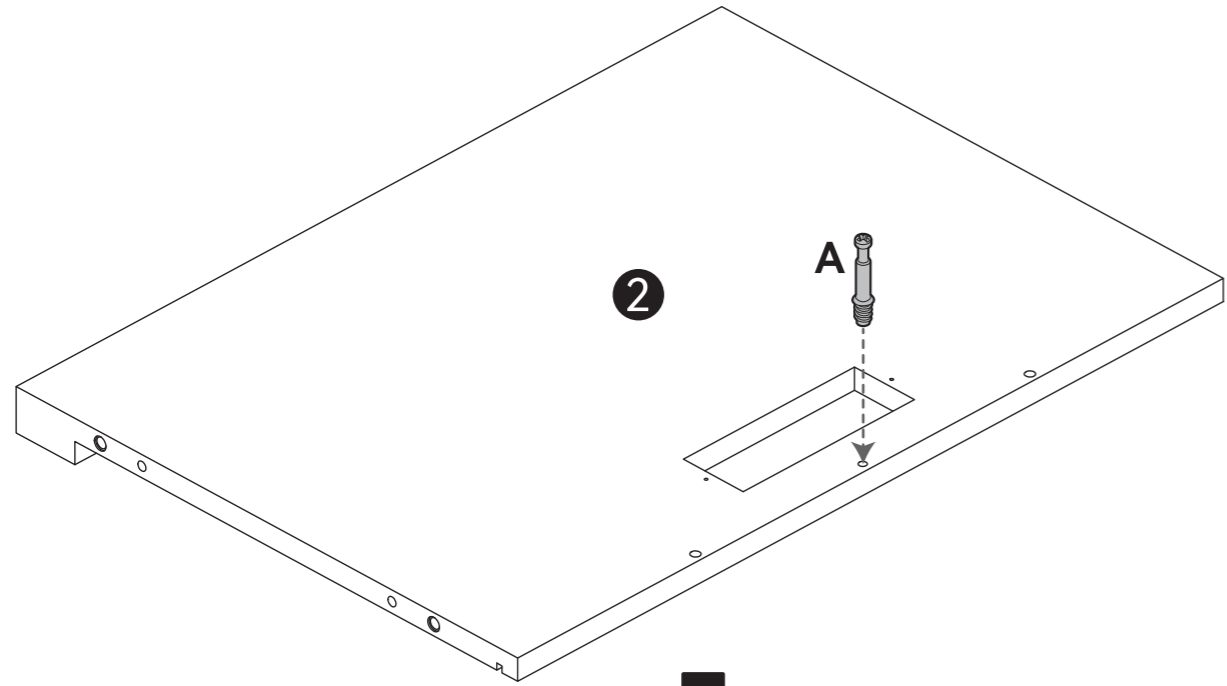
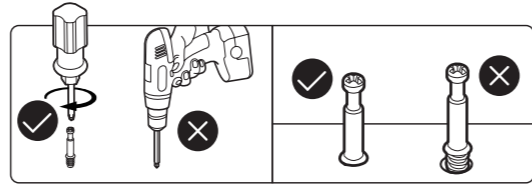
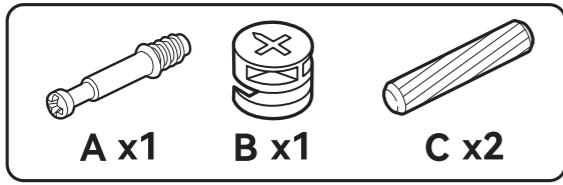


During installation, align the first hole of the slide rail with the pilot hole on the board.

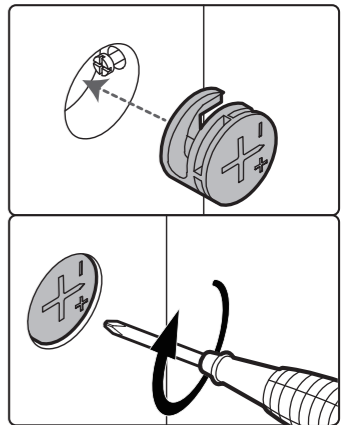
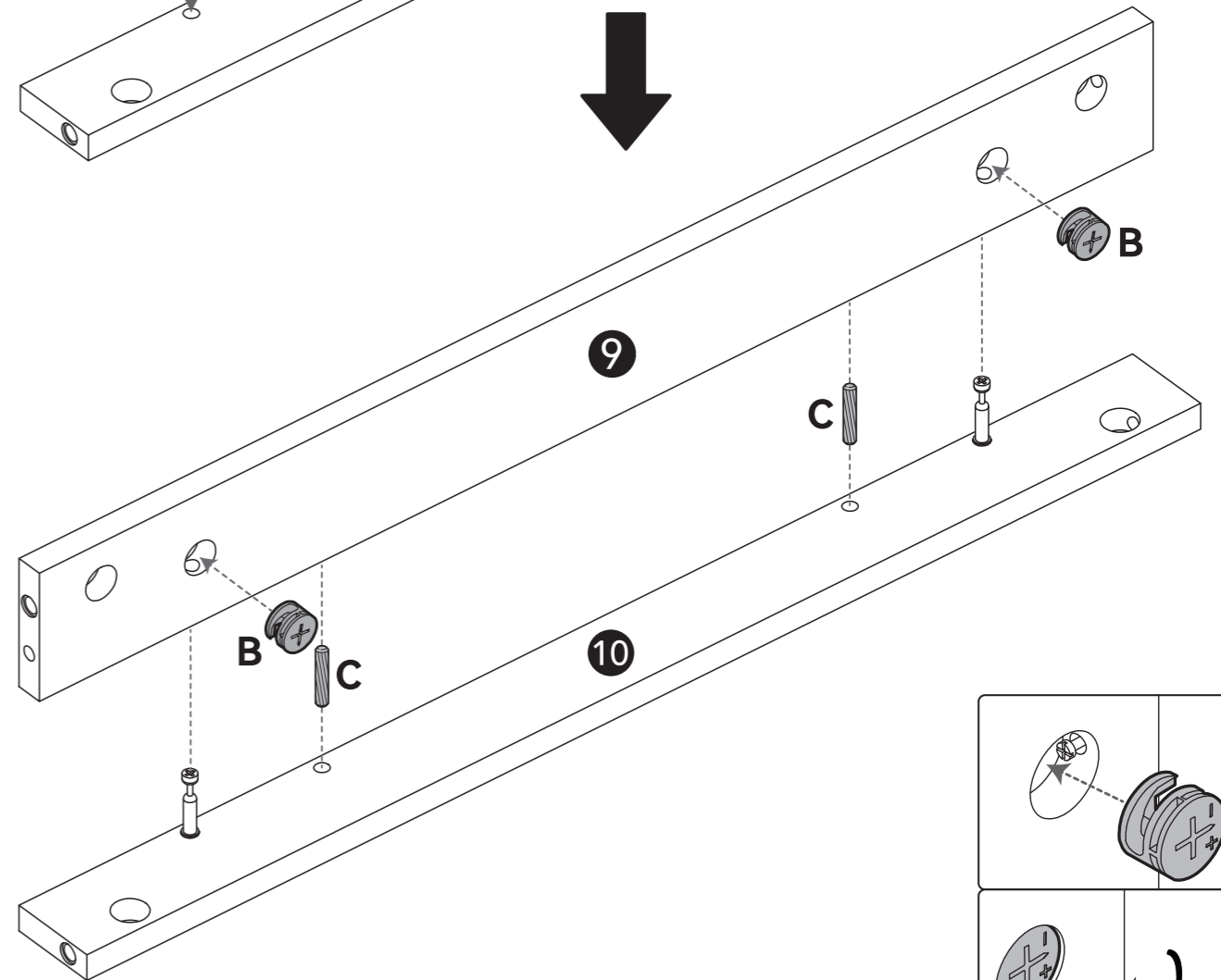
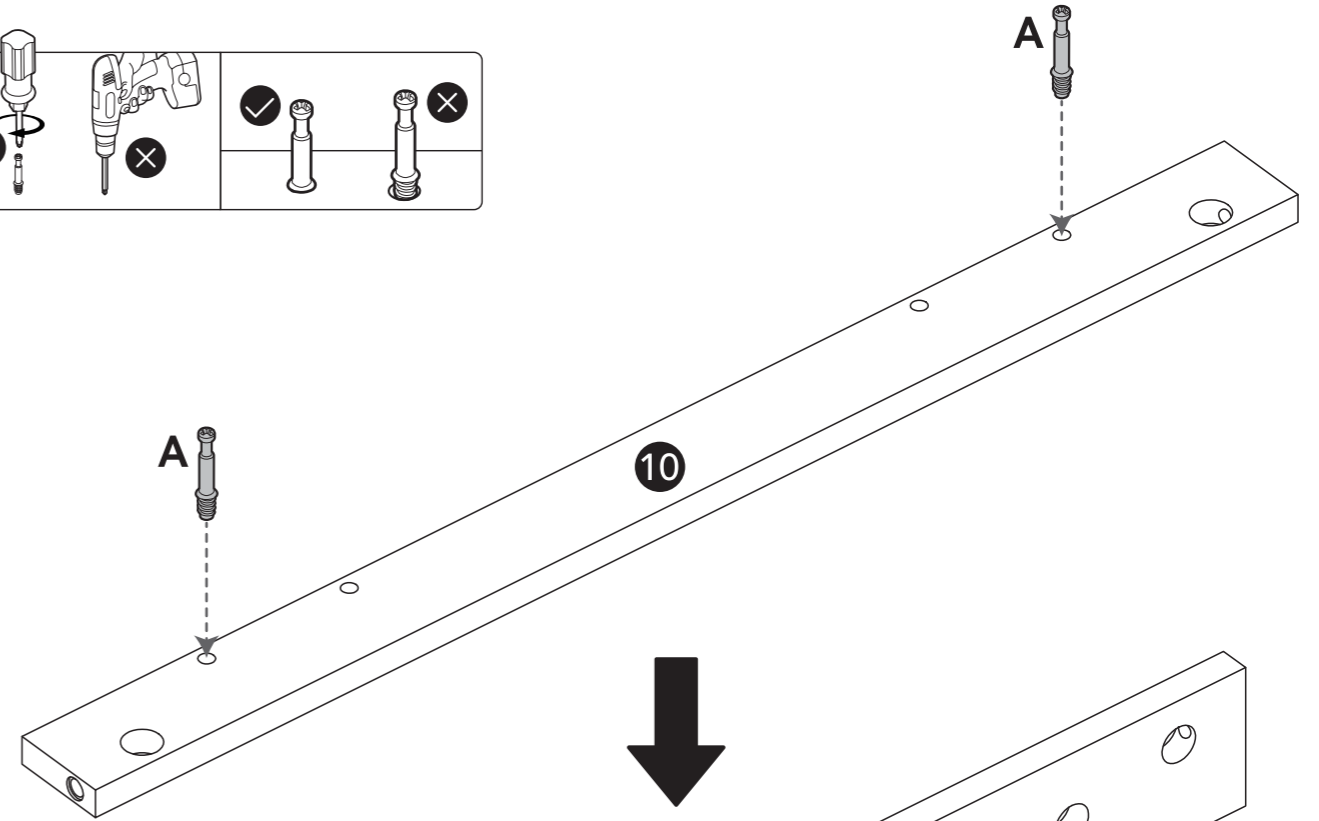
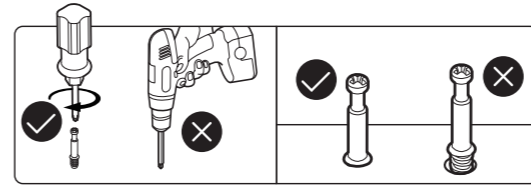
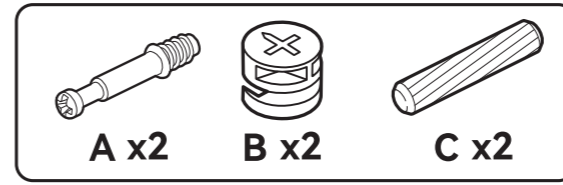
# 4



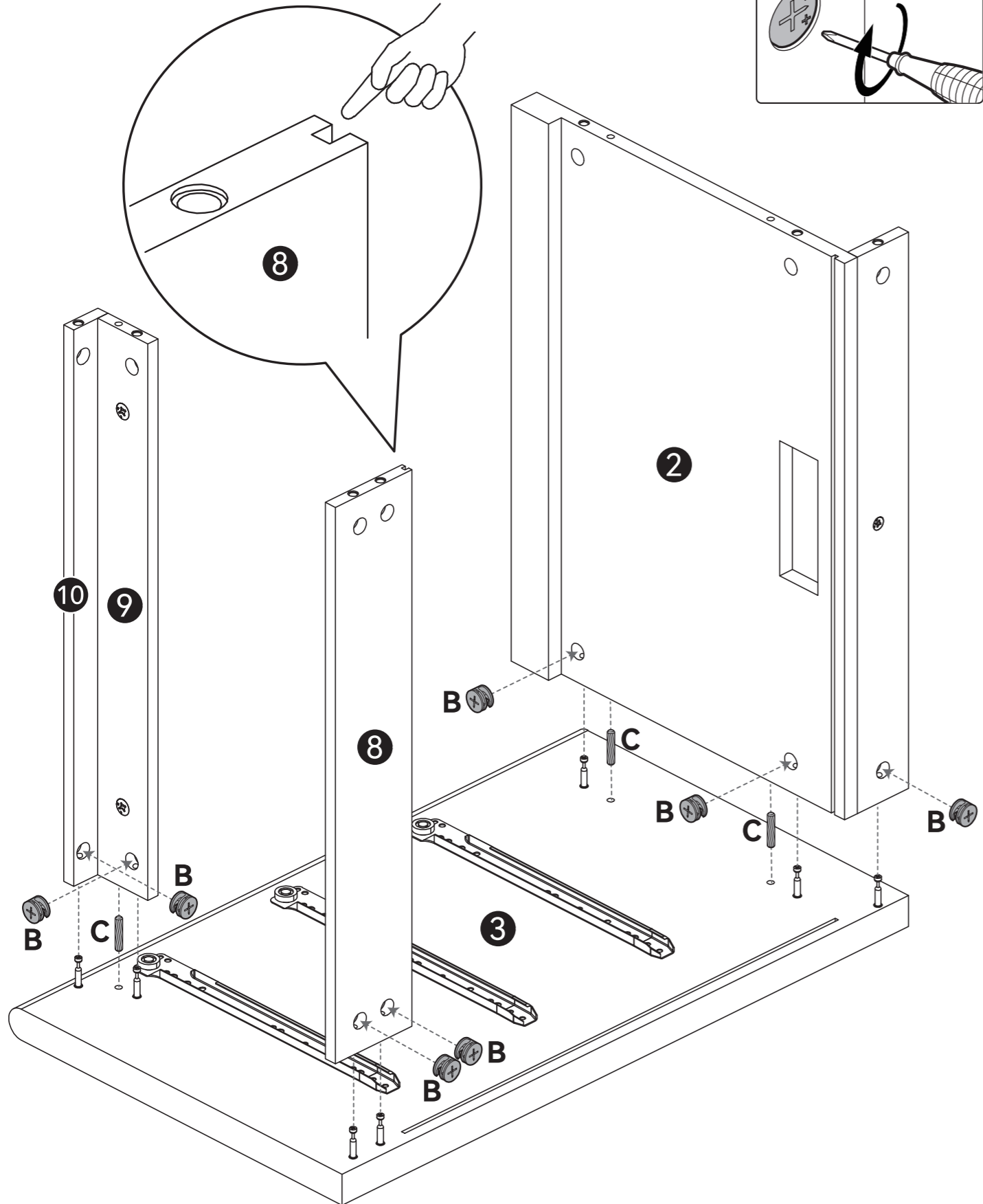
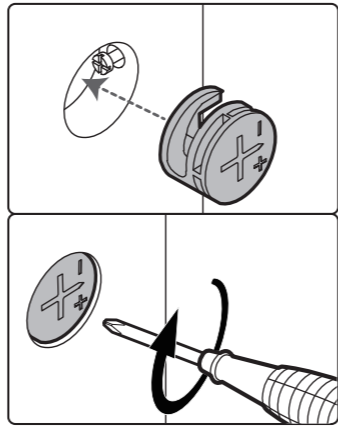
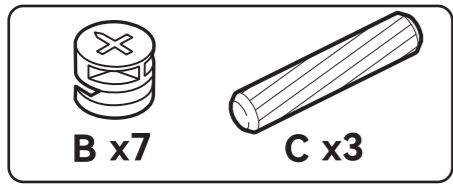
# 5



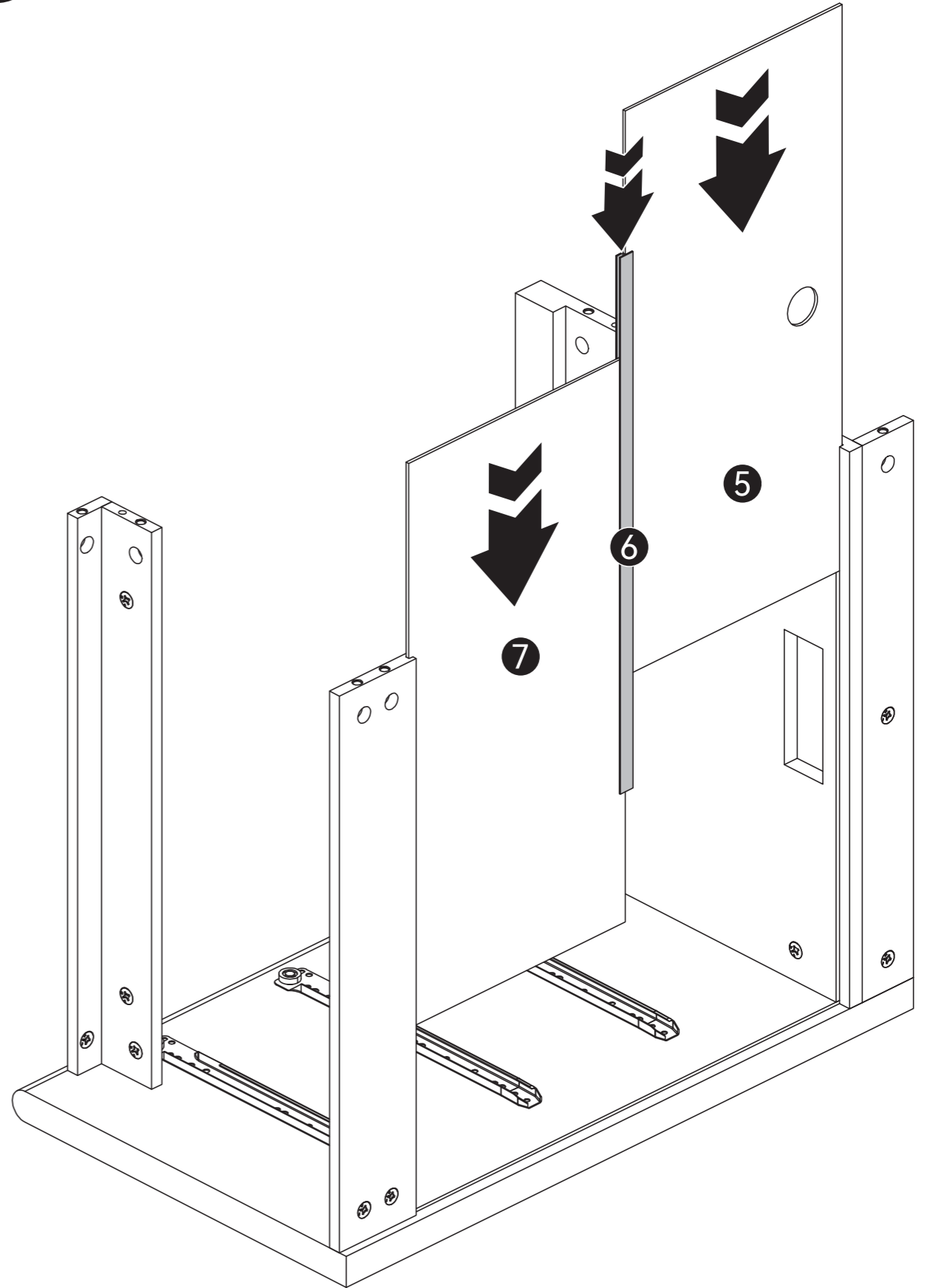
# 6



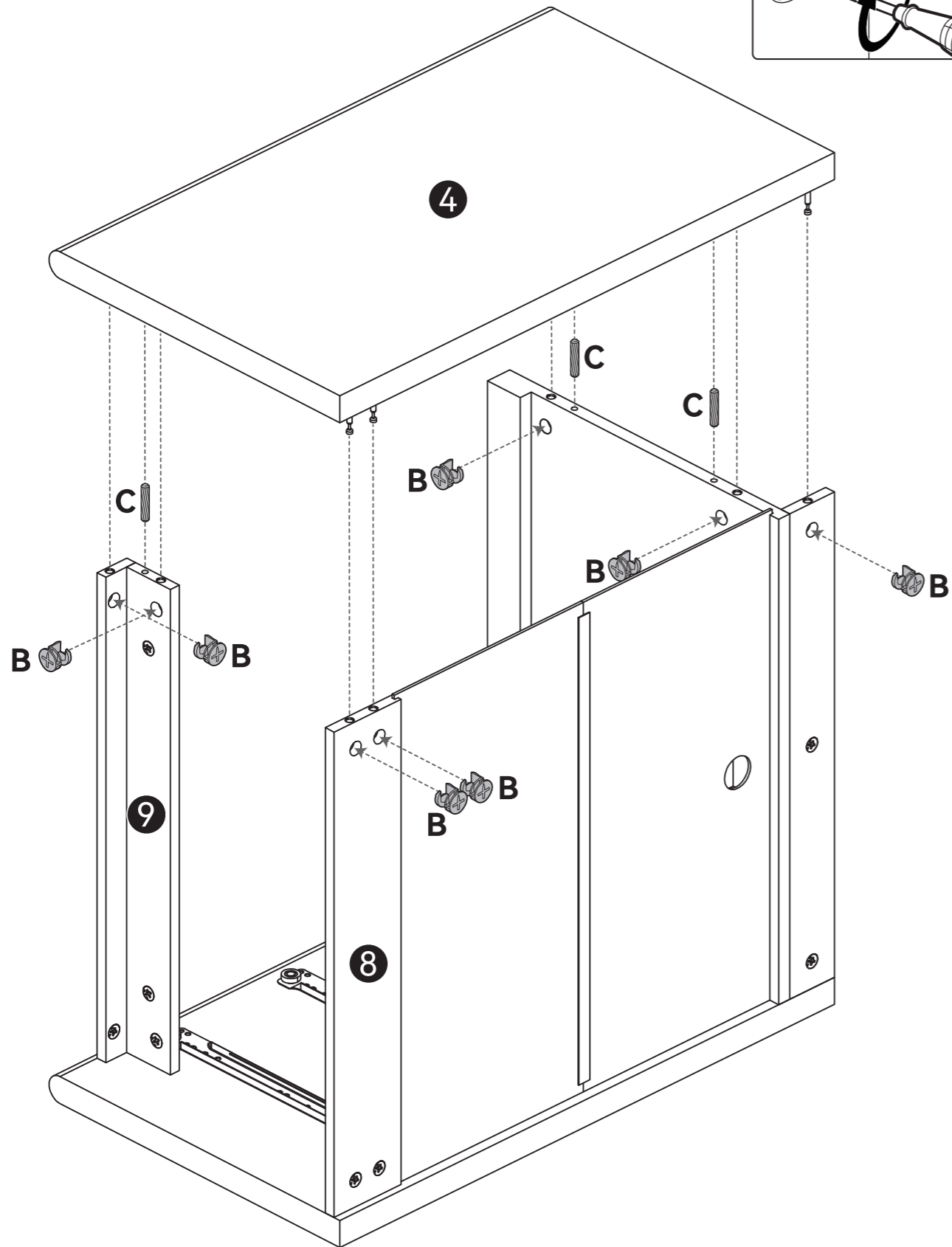
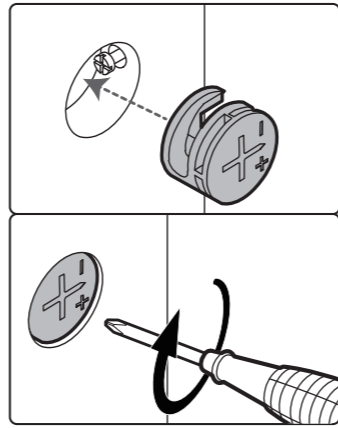
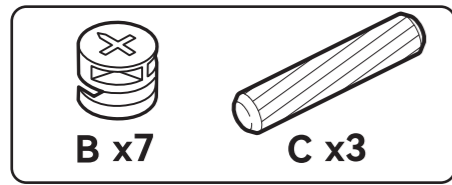
# 7



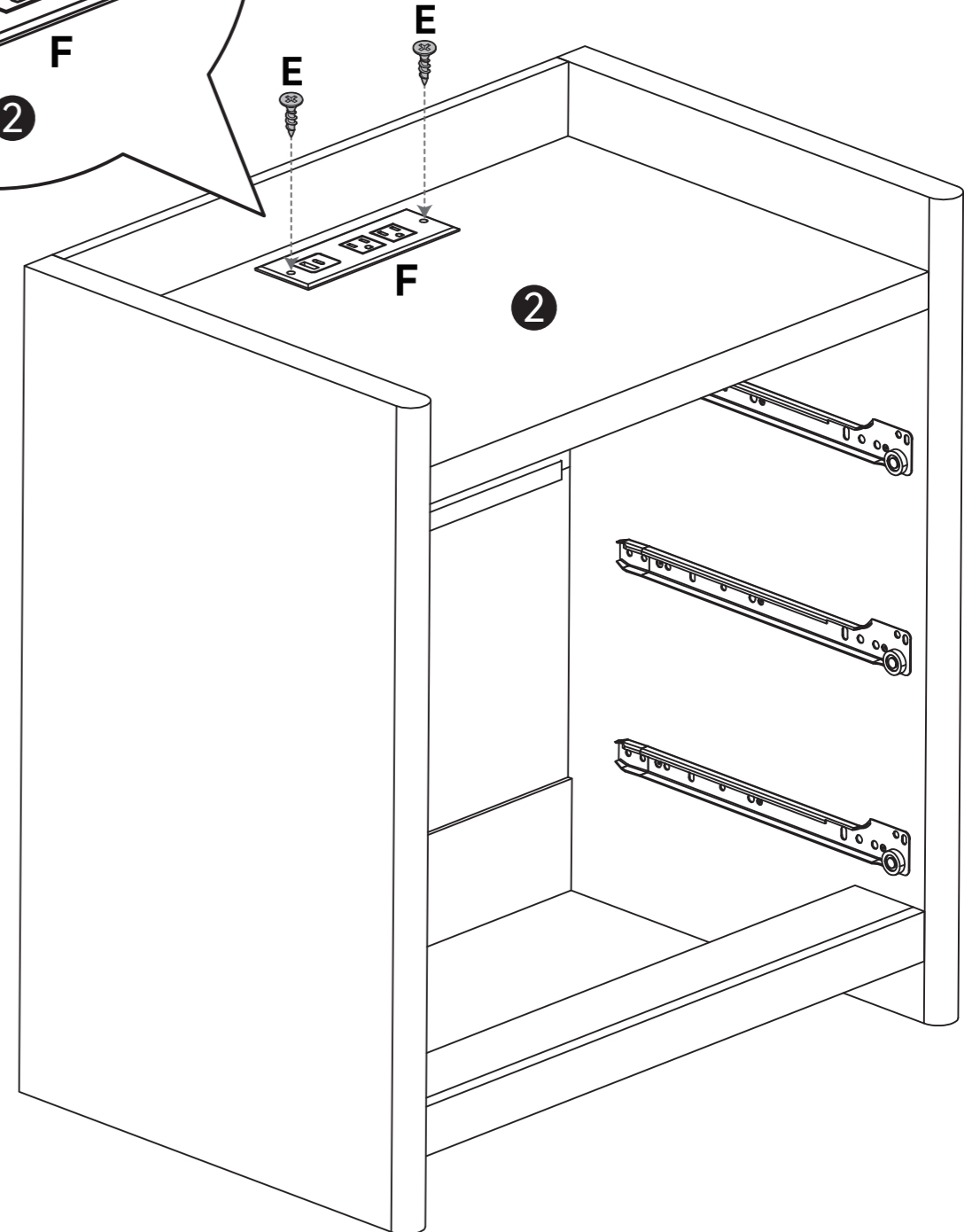
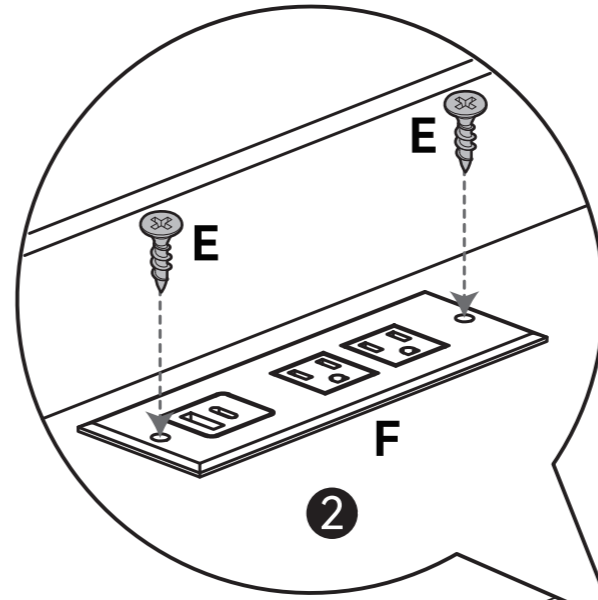
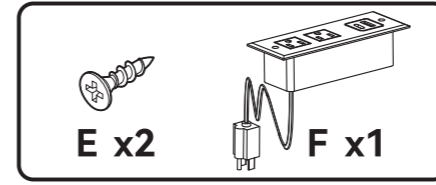
# 8



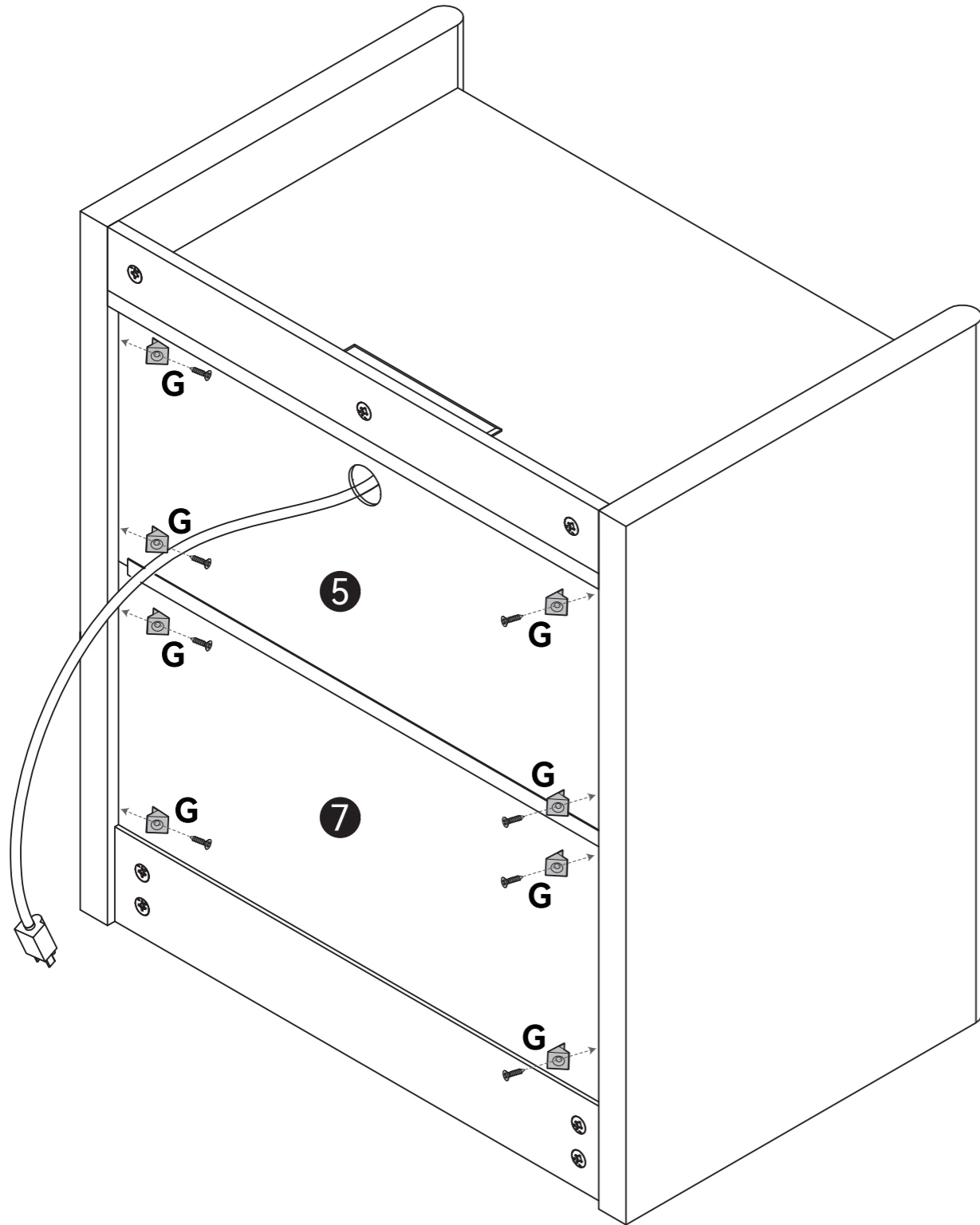
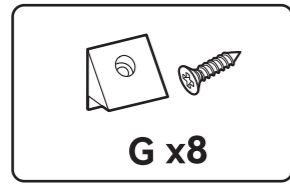
# 9



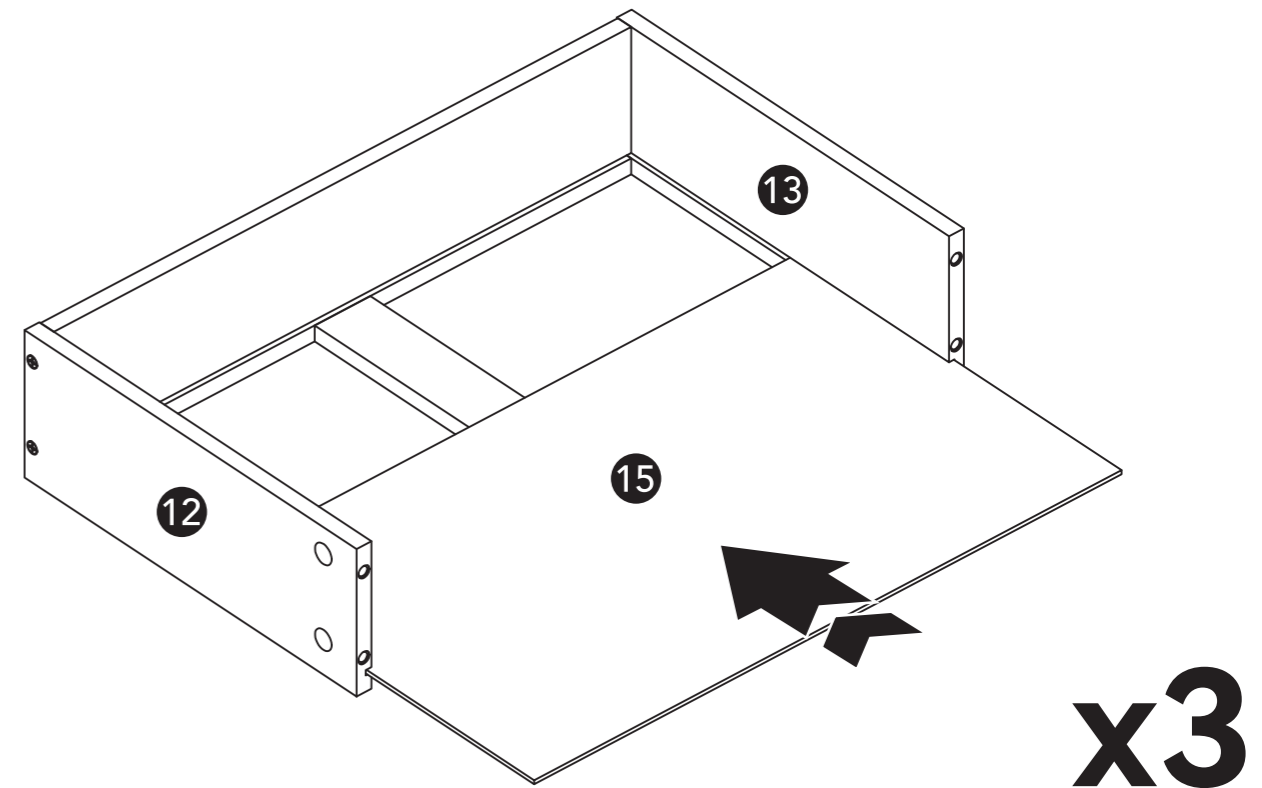
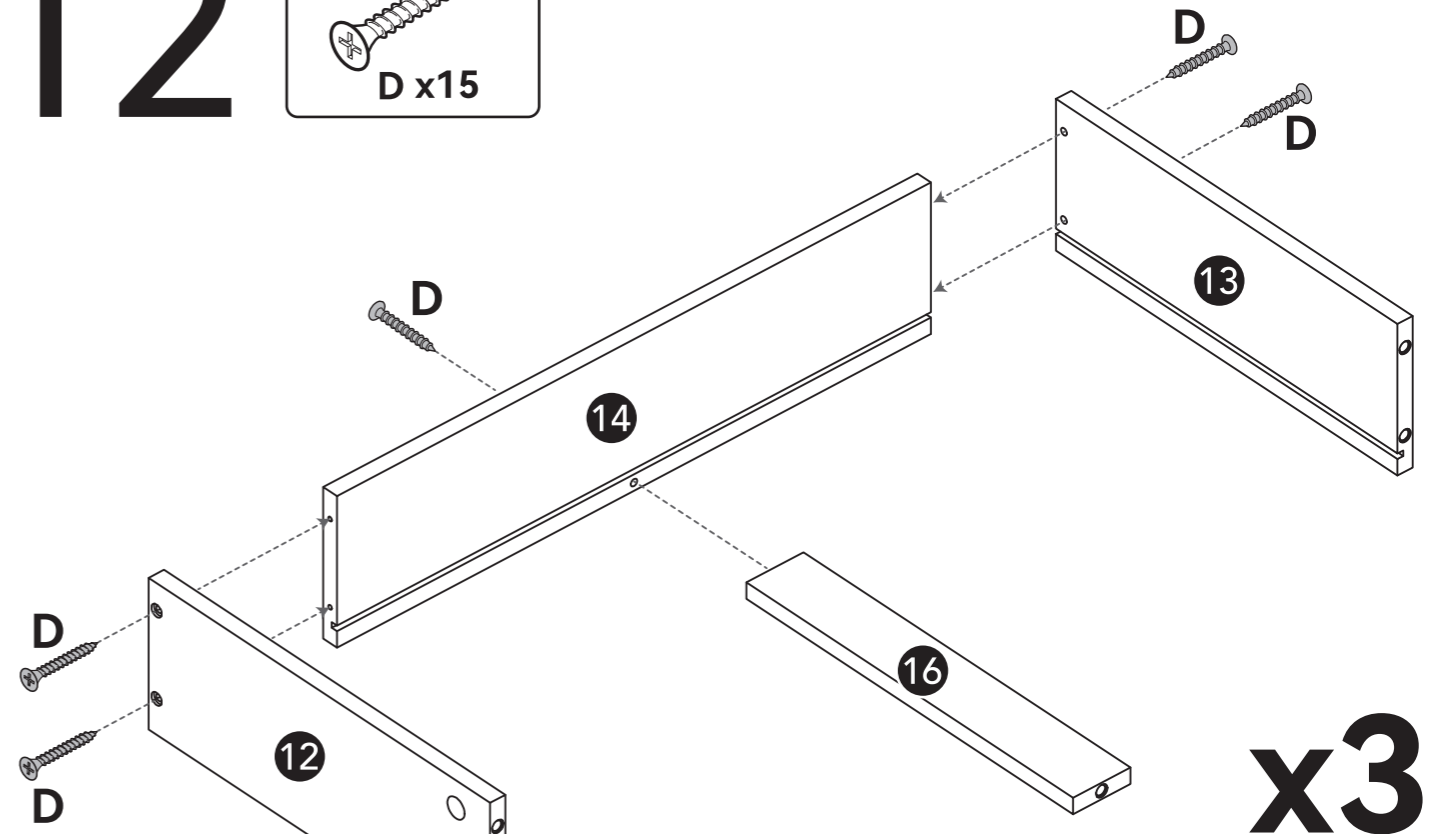
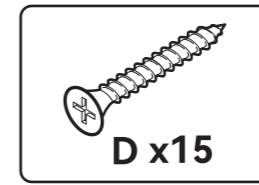
# 10



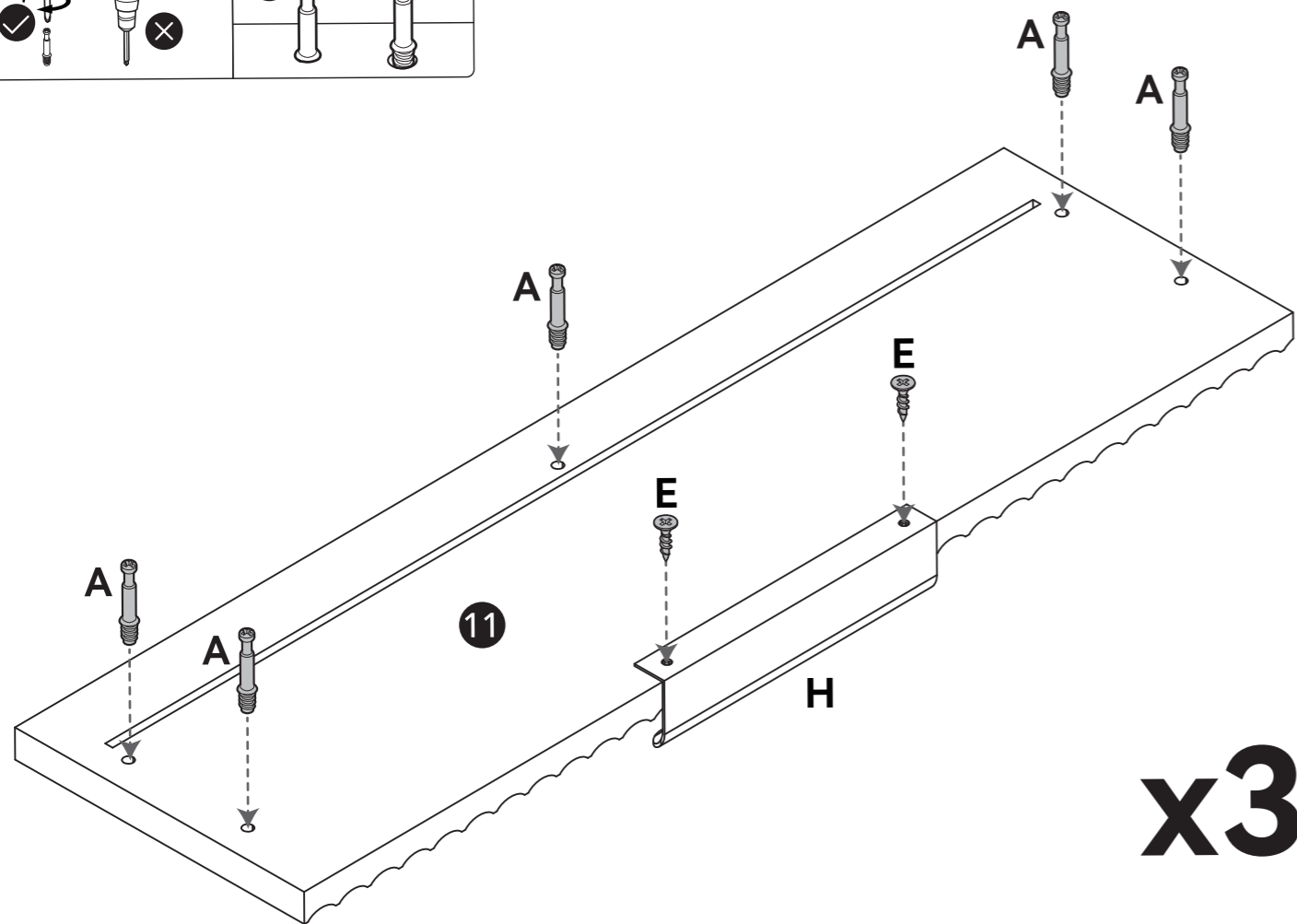
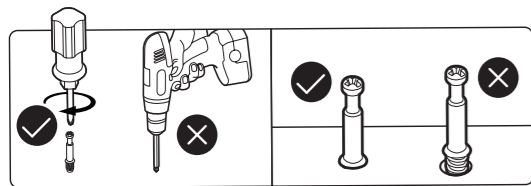
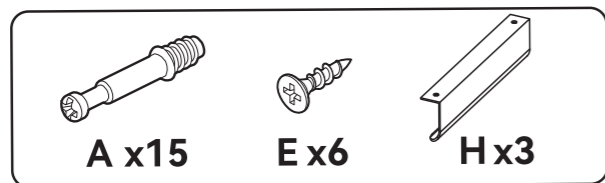
# 11



# 12

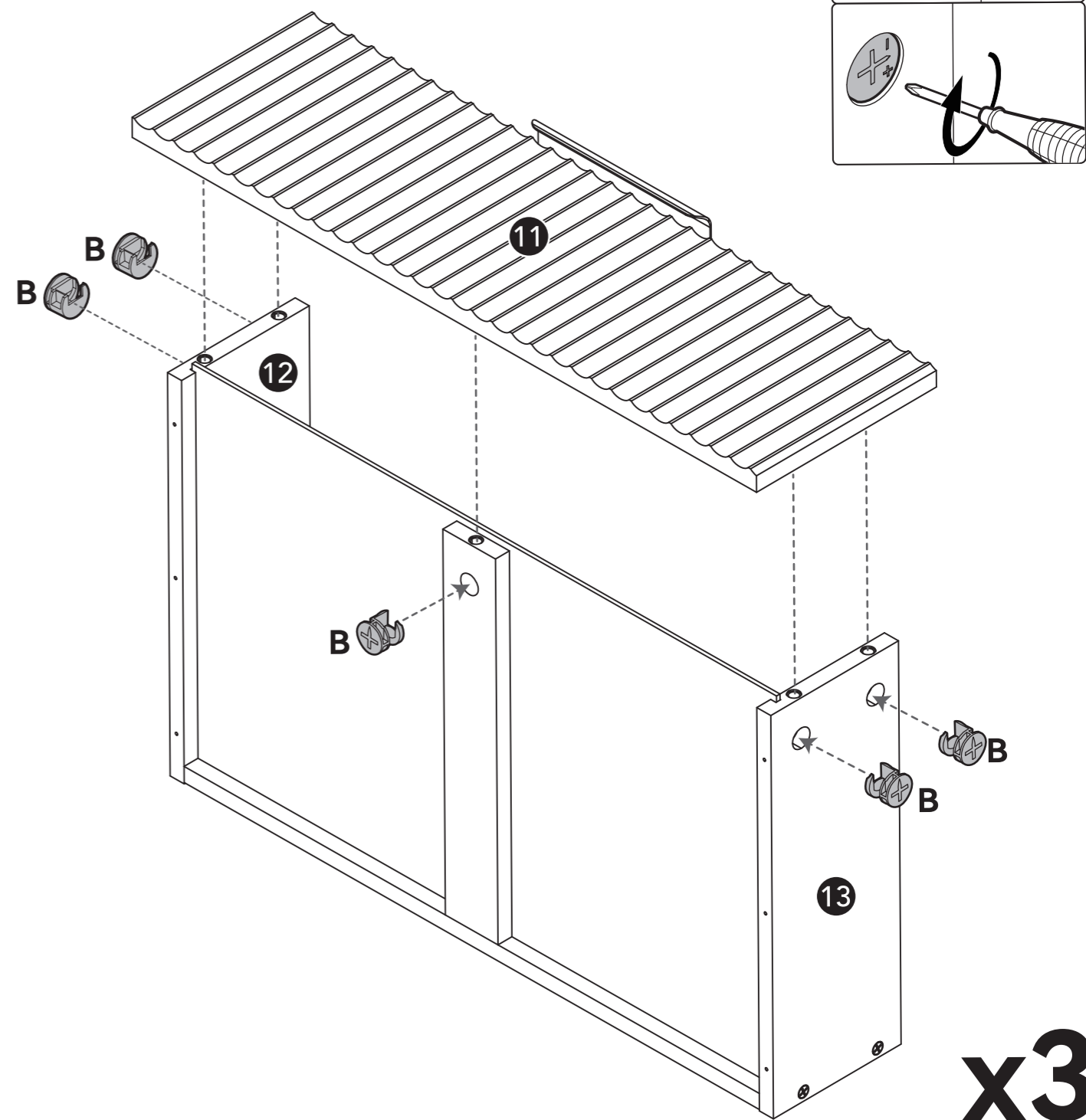
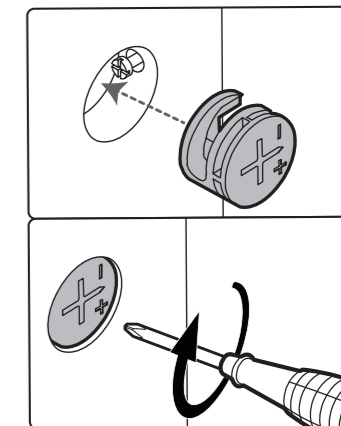
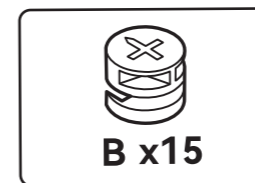


# 14



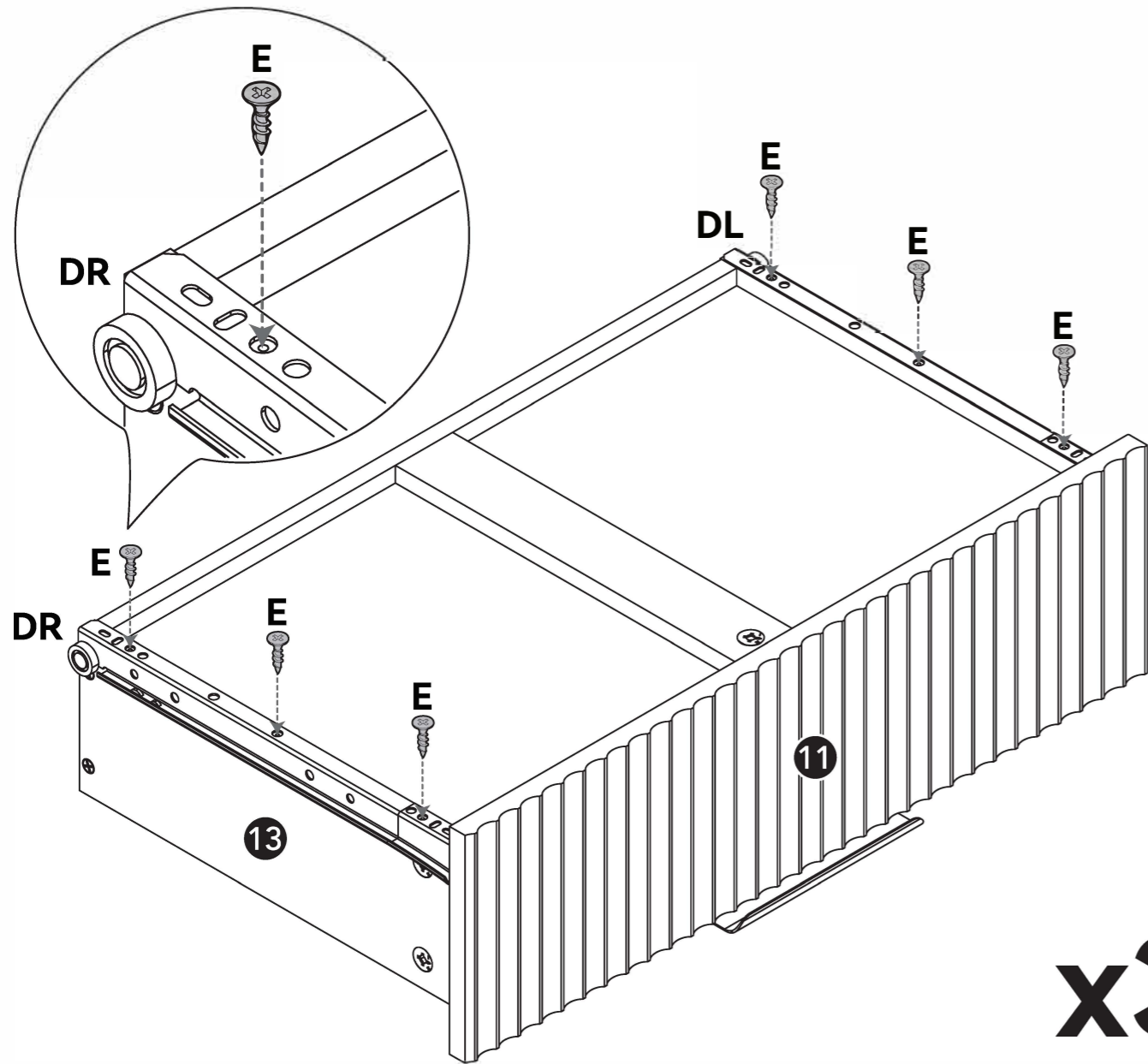
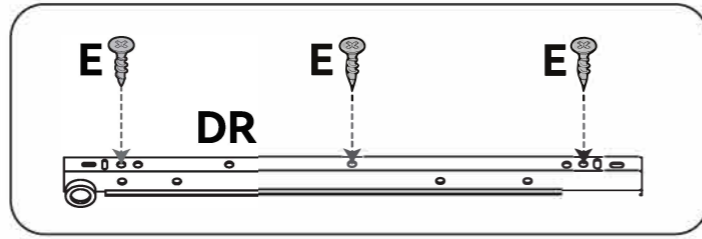
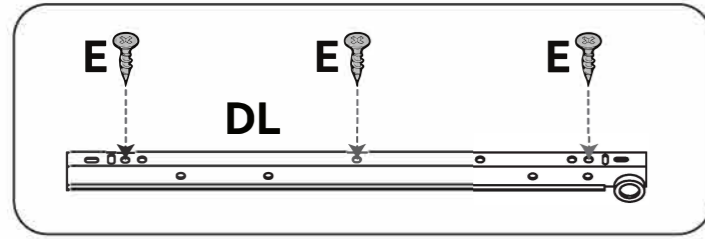
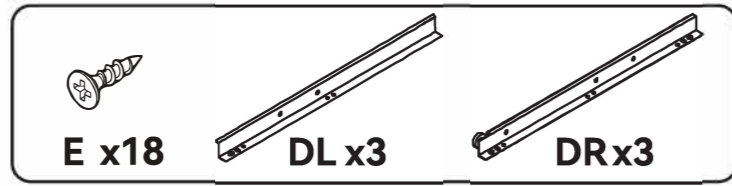
## x3

# 15



## x3

# 16



# x3

# 17

