

Kubos™ Diverter Trim, Shower and Tub Combination (Valve not included)

FEATURES:

- CPT-24400: Diverter Shower Valve Trim
- S-3021: Shower Head 2.5 GPM (9.5 L/min) flow rate
- S-2560: Shower Arm & Flange
- S-1568: Tub Spout

VALVE OPTIONS:

- CPV-PB-DV: Pressure Balance Diverter Valve
Sweat & Thread Connections
- CPV-PB-DV-PXC: Pressure Balance Diverter Valve
PEX F1807 Crimp Inlet Connections
- CPV-PB-DV-PXE: Pressure Balance Diverter Valve
PEX F1960 Cold-Expansion Inlet Connections
- CPV-T-DV: Thermostatic Diverter Valve
Sweat & Thread Connections
- CPV-T-DV-PXC: Thermostatic Diverter Valve
PEX F1807 Crimp Inlet Connections
- CPV-T-DV-PXE: Thermostatic Diverter Valve
PEX F1960 Cold-Expansion Inlet Connections

STOCK FINISHES:



PC BN

STANDARDS:

- ASME A112.18.1/CSA B125.1 certified
- ADA compliant

WARRANTY:

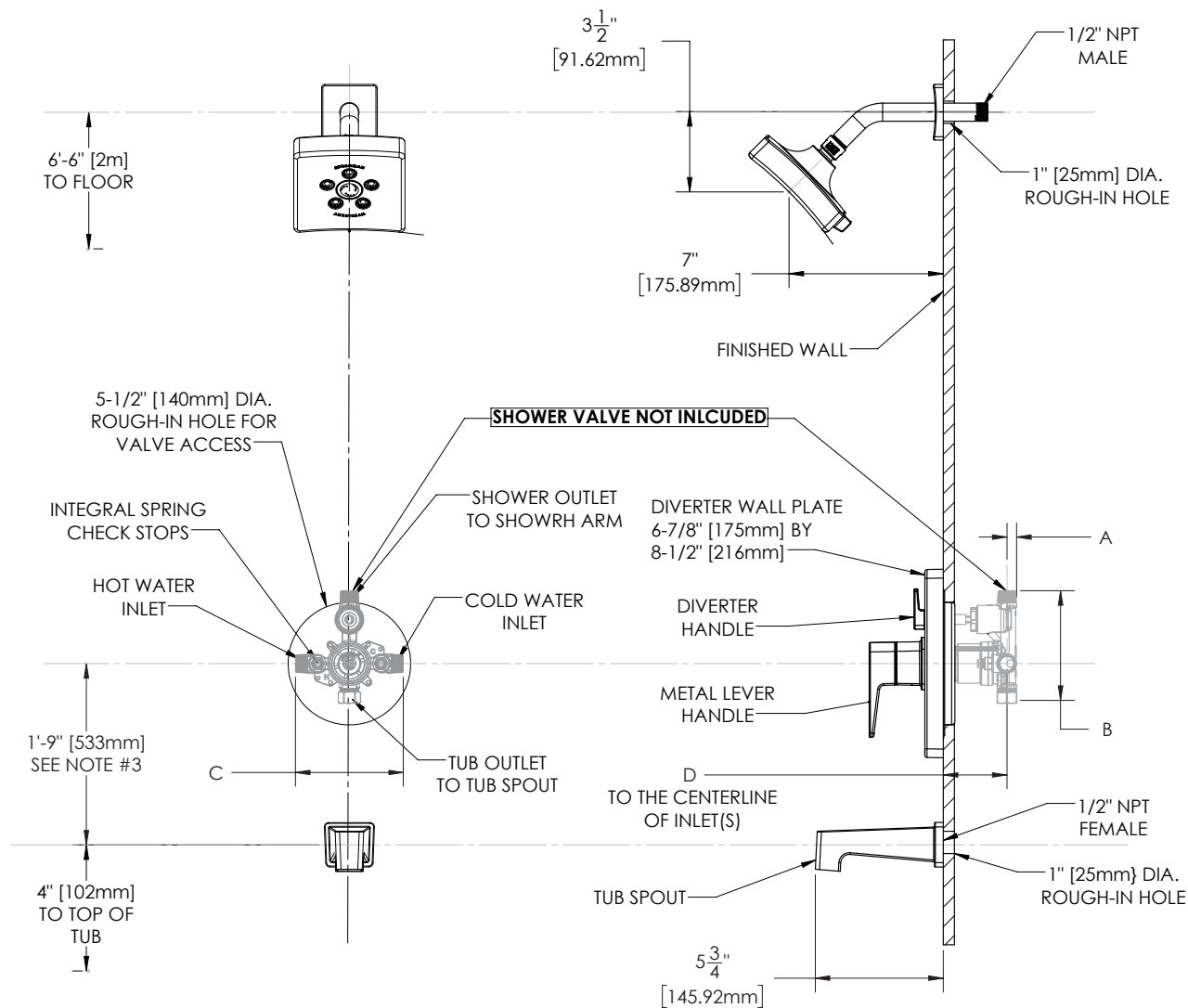
Visit www.speakman.com for full product warranty information

- See Speakman.com For Warranty Information



Information continues on next page

Kubos™ Diverter Trim, Shower and Tub Combination (Valve not included)



NOTES:

1. ALL DIMENSIONS ARE IN INCHES [MILLIMETERS] UNLESS OTHERWISE SPECIFIED AND ARE SUBJECT TO CHANGE WITHOUT NOTICE.
2. ALL INLETS AND OUTLETS ARE 1/2" FEMALE COPPER SWEAT AND 1/2" MALE NPT UNLESS OTHERWISE SPECIFIED.
3. FOR ADA MOUNTING LOCATIONS CONSULT ADAAG, ANSI A117.1, OR STATE REGULATIONS.

| DIMENSION | CPV-PB-DV | CPV-T-DV | CPV-PB-DV-PXC | CPV-PB-DV-PXE | CPV-T-DV-PXC | CPV-T-DV-PXE |
|-----------|--|-----------------|---|---------------|---|--------------|
| A | 7/16" (11mm) | 9/16" (14mm) | 7/16" (11mm) | | 9/16" (14mm) | |
| B | 4-15/16" (125mm) | 5-1/16" (128mm) | 4-15/16" (125mm) | | 5-1/16" (128mm) | |
| C | 4-13/16" (123mm) | 5-7/8" (150mm) | 4-13/16" (123mm) | | 5-7/8" (150mm) | |
| D | 2-1/2" (63mm) MIN TO 3-1/2" (89mm) MAX | | | | | |
| E | | | 3-1/8" (79mm) MIN TO 4-1/8" (105mm) MAX | | 3-3/16" (81mm) MIN TO 4-3/16" (106mm) MAX | |

Architect/Engineer Approval Space:

P: 800-537-2107
F: 800-977-2747
W: WWW.SPEAKMAN.COM
R: 01-JANUARY 2019