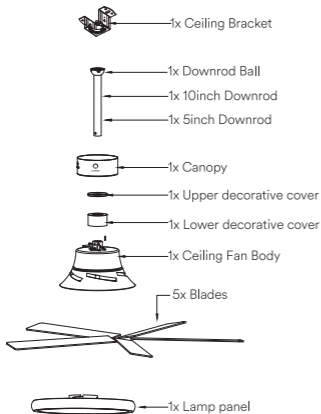


Owner Manual Smart Ceiling Fan Light

PACKAGE CONTENTS



Parts for Ceiling Bracket



Parts for Ceiling Bracket



7*37 Expansion rubber
plug *4pcs



ST4*40 Screw *4pcs



Washer *4pcs



5/32-32*L25 *2pcs



Nuts Cap *3pcs

Parts for Ceiling Bracket



Washer *18PCS



M5*12 Screw *18PCS



42*35 Balance Weight *1PCS



Balance clip *1PCS



1x 5inch Downrod
1x 10inch Downrod

IMPORTANT SAFETY INSTRUCTIONS

Category	Specific Instructions
Pre-Installation Preparation	Ensure the mobile device is running iOS 17 or later (iOS) or Android 12 or later (Android). Connect to a 2.4GHz Wi-Fi network; 5GHz networks are not supported.
Electrical Safety	Always turn off power before installing or servicing the fan. The fan must be installed in a circuit with a wall-mounted isolation switch. Use only replacement parts recommended by the manufacturer. Read all instructions and safety information before installation. Disconnect power, remove fuses, or turn off circuit breakers before installation.
Physical Safety	1. Mount the fan directly to structural framing or a junction box labeled acceptable for fan support (minimum 35 lbs / 15.9 kg). 2. Do not bend blade arms during installation. Keep objects away from rotating blades. 3. Chemical Burn Hazard: Keep batteries secure and out of children's reach.
Usage & Maintenance	1. Supervise children when using the appliance. Children aged 8+ and individuals with reduced capabilities require guidance. 2. Supervise children during cleaning/maintenance. 3. Do not use solid-state fan speed controls or rheostats.
Compliance	Ensure electrical connections comply with local laws and the National Electrical Code (NEC). Hire a qualified electrician if unfamiliar with wiring (or consult DIY manuals). Install in a location with unobstructed blade rotation and at least 7 feet above the floor. Use a metal junction box secured directly to the building structure to support the fan's weight (minimum 35 lbs).
Professional Installation	Hire a qualified electrician for installation if unfamiliar with wiring. Secure all connections to prevent fan detachment.

This table organizes critical safety information into clear, concise categories (e.g., compliance with U.S. electrical codes, child safety, and professional guidance) to help users prioritize and follow instructions effectively.

TROUBLESHOOTING

Problem	Solution
Fan Doesn't Work	<p>Make sure the power switch is on.</p> <p>Check the circuit breaker to ensure the power is turned on.</p> <p>Make sure the blades spin freely.</p> <p>Turn off power from the circuit breaker, then loosen the canopy and check all the connections according to the wiring diagram.</p>
Excessive	<p>Make sure the blades are properly installed on the blade iron posts.</p> <p>Turn the power off, support the fan carefully, and check that the hanger ball is properly seated.</p>
Remote Control	<p>Re-pair the remote control, Power cycle the fan by toggling the wall switch (or circuit breaker if needed). Within 10s, Press the switch button twice and the light will breathe or blink.</p>
Remote Only Works Close to Fan	<p>Change battery</p>
Noisy Operation	<p>Make sure the blades are properly installed.</p> <p>Check to see if any of the blades are cracked, if so, replace all of the blades.</p>

If your problem is not listed or still persists, please contact

NOTE:

- **Products don't recommend that you use dimmers because flicker may occur during use.**
- **Make sure your mobile device meets the following requirements:**
For iOS: Ensure your device is running iOS 17 or higher.
For Android: Ensure your device is running Android 12 or higher.
- **Ensure that you are connecting to a 2.4GHz Wi-Fi network as devices are not compatible with 5GHz networks.**

BEFORE INSTALLATION

TOOLS NEEDED (NOT INCLUDED)

Essential Tools for a Successful Installation:



Ladder

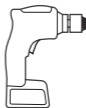


Phillips Screwdriver



Wire Stripper

Optional Tools:

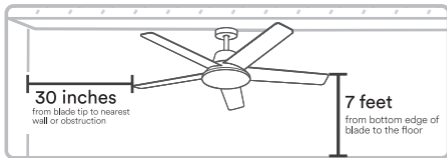


Drill

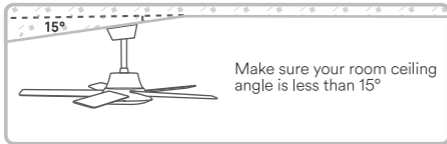


9/64" Drill Bit

Check the room dimensions:



Check the room ceiling angle:

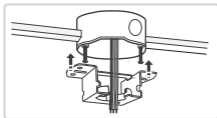


It is recommended to have a partner when installing the ceiling fan.

Ceiling Bracket → Blades → Light Kit → Downrod → Hanging the Ceiling Fan

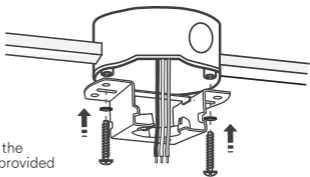


WARNING: To avoid possible electrical shock, before installing your ceiling fan, disconnect the power by turning off the circuit breakers to the outlet box associated with the wall switch location.



Note:

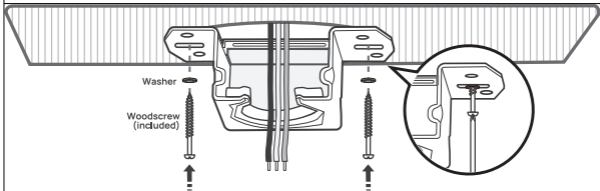
Machine screws are **not included** in the shipped package; they are typically provided with your outlet box.



Option 1:

Use machine screws (provided with outlet box) when:
Securing to existing ceiling fan-rated outlet box.

Make sure it is securely installed and is acceptable for fan support of 15.9 kg (35 lbs) or less.



Option 2:

Use wood screws and washers when:

Securing to support structure with approved electrical outlet box.
Drill 9/64" pilot holes in Support Structure to aid in securing ceiling bracket.

ASSEMBLING THE BLADES

Ceiling Bracket → Blades → Light Kit → Downrod → Hanging the Ceiling Fan

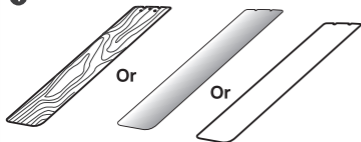


Gentle reminder:

Turn over the top foam box and place the ceiling fan body upward on its foam cavity when assembling the blades to prevent any damage to the wires.

1

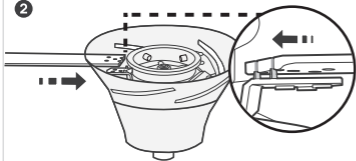
BLACK+RED BROWN WOOD WHITE + OAK WOOD SILVER + NATURAL WOOD



You have the freedom to select either the front or back side according to your preference.

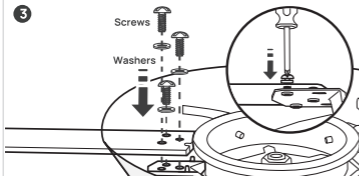
Note: For better performance, utilize the fan blades consistently, whether using the front or reverse side.

2



Make sure that the two blade slots align with the vertical tabs in the ceiling fan body.

3



Partially insert the screws and washers into the blade's holes, and then use a screwdriver to securely tighten them.

4



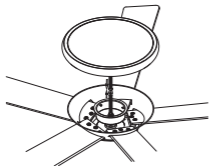
Follow the above two steps to complete the assembly of the remaining four blades.

NOTE: Follow the instructions on the blade carefully. Incorrect installation could result in the fan not functioning properly.

ASSEMBLING THE LIGHT

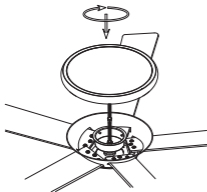
Ceiling Bracket → Blades → Light Kit → Downrod → Hanging the Ceiling Fan

1



Connect the terminal wire of the lamp panel to the bottom terminal of the fan lamp and put it into the box.

2



Align the lamp panel with the bottom panel of the fan lamp, press and twist the lamp panel to make the lamp panel clamp on the lamp body, and make sure it is secure.

ASSEMBLING THE DOWNROD

Ceiling Bracket → Blades → Light Kit → Downrod → Hanging the Ceiling Fan

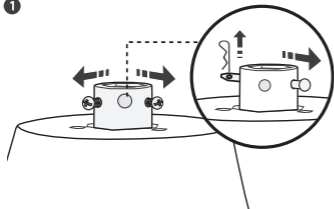


⚠ WARNING: FAN FALL HAZARD

To prevent **SERIOUS INJURY** or **DEATH**:

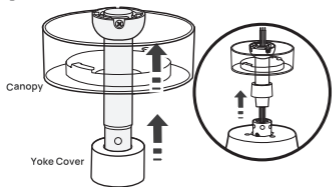
- ALWAYS tighten setscrew with screwdrivers.
- DO NOT hand tighten setscrew.
- CHECK the setscrew is tight using screwdrivers each time you change fan direction.

1



Remove the pre-installed setscrew and downrod pin.

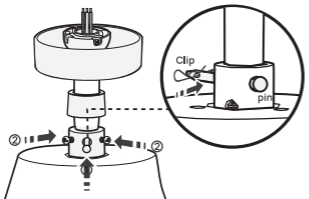
2



Insert the canopy and then the yoke cover to the downrod.

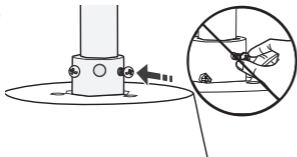
Pass all the wires to one side of the horizontal bar in the downrod to prevent excessive wire tangling.

3



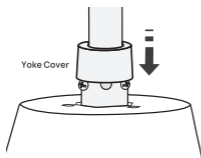
Carefully slide the downrod into the yoke of the motor assembly. Align the holes in the downrod. Carefully re-install the downrod pin and clip.

4



Tighten the setscrew with a screwdriver.

5

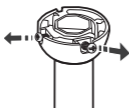


Put down the yoke cover.

Note:Please lift the canopy and yoke cover to avoid interference with your installation when you are tightening setscrew.

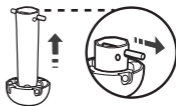
The downrod ball has been pre-installed on the 10inch downrod. If you wish to move it to the 4inch downrod, please follow these steps.

1



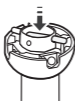
Loosen and remove the two screws on the downrod ball from the 10inch downrod.

2



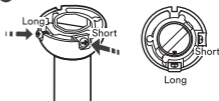
Lift the downrod upwards, then remove the horizontal bar, and detach the downrod ball from the 10inch downrod.

3



Install the downrod ball onto the 5inch downrod and securely insert the horizontal bar in its designated position.

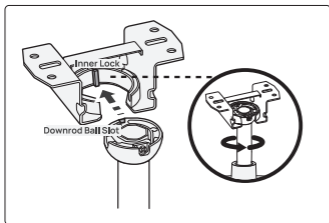
4



Insert the first perforated long screw tightly, insert the second short screw tightly.

HANGING YOUR CEILING FAN

Ceiling Bracket → Blades → Light Kit → Downrod → Hanging the Ceiling Fan



- 1 Place the downrod ball into the ceiling bracket.

Make sure the **downrod ball slot** matches the **inner lock**.

Rotate the downrod until it's secured.

- 2 Connect the **yellow, gray, and white** wires to the control box terminal labeled "CCT".

Connect the **red, black, and blue** wires to the control box terminal labeled "RGB".

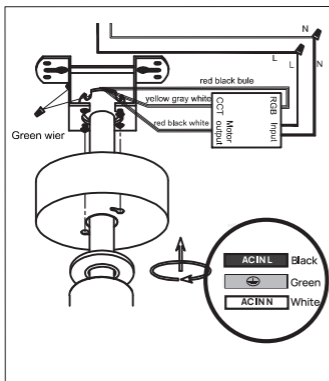
Connect the **red, black, and white** wires to the control box terminal labeled "Motor Output".

- 3 Connect the white (N) wire from the ceiling to the white wire from the fan.

Connect the black (L) wire from the ceiling to the black wire from the fan.

Connect the three grounding wires (green, or bare copper) coming from the ceiling, downrod, and hanging bracket.

- 4 Rotate the canopy and tighten it with screws. Push the decorative cover up against the ceiling plate. All installations are complete. Turn on the power switch to test.



Note:Please check if the ceiling fan has been properly installed before use.

What You Need:

A Wi-Fi router supporting the 2.4GHz and 802.11b/g/n bands. 5GHz is not supported.
A smartphone running iOS or Android.

1. Download the App from the App Store or Google Play.
2. Register an account.

Note: Please select your region and country.

3. Connect

NOTE: products can't connect to 5GHz networks.

Steps:

1. Turn on your smartphone's Bluetooth;
2. Open the App, In the top corner of the Devices screen, click "+" and select "Add Device" to confirm that the device is paired.
3. Each time the device without distribution network is powered on, confirm the light is breathing or blinking pairing mode; If not, you need to use the switch to reset: on-off-on-off-on;
4. Find the device, choose Wi-Fi and enter password, press "Next". Click "Add", and wait patiently. After that, click "Done", and the device is successfully added to the App.

If you have any questions. You can contact us via our after-sales email or leave a message on our official social media account.

How to reset the fan light using the remote control?

Long press the button  for 5S, the fan light will go into breathing state.



PARAMETER INFORMATION

Name	Smart Ceiling Fan Light
Model	A
Input Voltage	120VAC,60Hz
Wattage	Fan:24W Light:35W
Color Temperature	RGBAI +Tunable White(2700K-6500K)
CRI	90+
Lumens	2600lm
Beam Angle	120°
Fan	1-6 Speeds
Rated Life	25000h



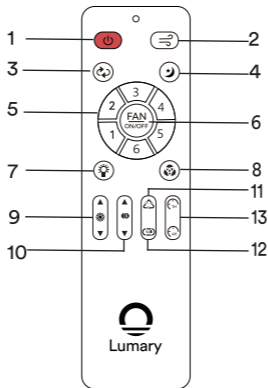
RoHS



Contains FCC ID:2ANDL-CB3S

Made in China

REMOTE CONTROL



Note: The remote control that shipped with your fan is already paired.

1: Turn on/off

3: Fan rotates: forward/ in reverse

5: Fan speed: 1 is the weakest, 6 is the strongest

7: Turn on white color

9: Change brightness

11: Change RGB color

13: Countdown Timing 1 Hour/4 Hours

2: Wind mode: nature/soft

4: Night light


6: Fan on/off, Long press 5 seconds to trigger the pairing mode

8: Turn on RGB color

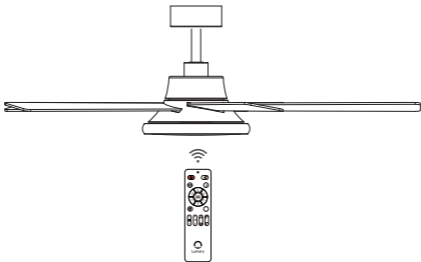
10: Change color temperature

12: Change RGB mode

How to reset remote control?

Power on the fan light, then long press the button  for 10s, the fan light will go into breathing state that the reset is done.

Pairing anew remote control to an existing fan

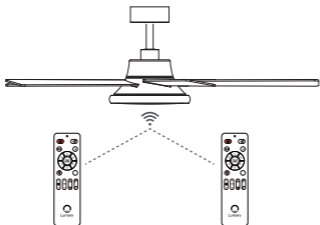


If you lose your remote control or purchase a new one, please follow the steps below to pair the control to your ceiling fan.


Power cycle the fan by toggling the wall switch (or circuit breaker if needed).

Within 10s, Press the **Button**  twice and the light will breath or blink.

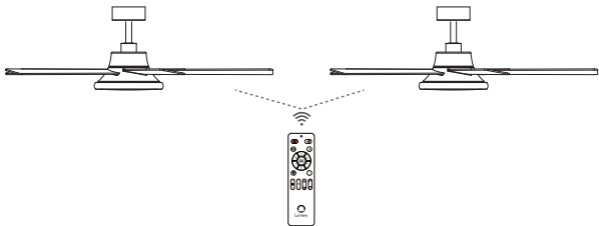
Installing one fan operating on multiple remote controls




To have multiple remote controls operate one fan, you must pair each additional control to the receiver in the fan, the remote control that shipped with your fan is already paired.

Power cycle the fan by toggling the wall switch (or circuit breaker if needed).
Within 10s, Press the **Button**  twice and the light will breath or blink.

Installing multiple fans operating on a single remote control



To have multiple fans operated by a single remote control, you must pair the remote control to each additional receiver. The receiver that shipped with your fan is already paired to the remote control.

Power cycle the fan by toggling the wall switch (or circuit breaker if needed).
Within 10s, Press the **Button**  twice and the light will breath or blink.

1. Can't connect the light to App.

- Check whether the downlight is powered on.
- Check whether your smartphone Wi-Fi is enabled.
- Please make sure Wi-Fi connected to your phone is 2.4GHz (5GHz brand is not supported).
- Make sure your smartphone is close to the device when connecting for the first time.
- Check if you have entered the correct Wi-Fi password during Wi-Fi setup.
- Make sure the distance between the bulb and router is less than 50ft.
- If you fail to bind, you will need two phones, one to set the hotspot and the other to connect the hotspot and add the device through the app. If the device is successfully added, the device is normal. The problem may be in the router, you need to check your router Settings to see if there are MAC and DHCP restrictions.

2. Can I group multiple devices together?

- Yes, you can group multiple lights and other devices by Schemes, Same model, General (Wi-Fi or Bluetooth devices).

It depends on the function of different devices.

FCC STATEMENT

This device complies with Part 15 of the FCC Rules. Operation is subject to the following two conditions:

(1) this device may not cause harmful interference, and (2) this device must accept any interference received, including interference that may cause undesired operation. Changes or modifications not expressly approved by the party responsible for compliance could void the user's authority to operate the equipment.

NOTE: This equipment has been tested and found to comply with the limits for a Class B digital device, pursuant to part 15 of the FCC Rules. These limits are designed to provide reasonable protection against harmful interference in a residential installation. This equipment generates uses and can radiate radio frequency energy and, if not installed and used in accordance with the instructions, may cause harmful interference to radio communications.

However, there is no guarantee that interference will not occur in a particular installation. If this equipment does cause harmful interference to radio or television reception, which can be determined by turning the equipment off and on, the user is encouraged to try to correct the interference by one or more of the following measures:

- Reorient or relocate the receiving antenna.
- Increase the separation between the equipment and receiver.
- Connect the equipment into an outlet on a circuit different from that to which the receiver is connected.
- Consult the dealer or an experienced radio/TV technician for help.



1. Log in to App, tap the smart device and enter into, click "✍" in the top right corner.
2. Tap "Google Assistant" in Third-party Control.
3. Tap "Link with Google Assistant".
4. Click "Agree and link".
5. Linked successfully, when add new device, there is no need to link again, just discover new device in Google Home.

Things you can say*:

"Hey Google", and ask.

Things you can say*:

"Hey Google, turn on the light/fan."






"Hey Google, turn off the light/fan."

"Hey Google, set the fan light to orange."

"Hey Google, set the fan light to 50%."

*Some commands require compatible devices.

ADDITIONAL FEATURES

	<p>Adjustable Brightness & Color Temp 2700K-6500K, 0-100% Dimming Wake up to energizing cool light (6500K) for morning productivity. Wind down with warm amber (2700K) for cozy movie nights—no extra lamps needed.</p>
	<p>RGBAI & RGB Mode Transform your space instantly: vibrant rainbow for parties, soothing purple for yoga, or cinematic blue for Netflix marathons. Ditch boring single-color bulbs.</p>
	<p>Smart Timer Auto-off lights at bedtime to save energy. Simulate sunrise to wake up gently—no more jarring alarms or wasted electricity.</p>
	<p>Music Rhythm Sync Lights dance to your playlist! Throw a TikTok-worthy dance party or sync with white noise for meditation—your room becomes an extension of the vibe.</p>
	<p>Voice Control (Alexa/Google) "Alexa, dim the lights!" Control hands-free while cooking, working, or carrying groceries. Check lights remotely on vacation—peace of mind unlocked.</p>

CLEANING AND MAINTENANCE



Clean the motor housing and blades with a soft brush or lint-free cloth to avoid scratching the finish.



At least twice each year, lower the canopy to check the downrod assembly and tighten all screws on the fan.



- Shut off the main power supply before you begin any maintenance task.
- **DO NOT** use water or a damp cloth to clean the fan.
- Cleaning products may damage the finishes.

24 HOURS

Quick Response

If there is any problem, please check the Troubleshooting page. When you could not fix this, please contact us after-sale email, we will respond within 24 hours.

30 DAYS

Hassle-Free

After the purchase, if there any quality with devices, we can offer free return or replacement.

**2-YEAR
WARRANTY**



Friendly Reminder

Please rest assured that our service aim is to make customers 100% satisfied.

If there is any problem, please contact us as soon as possible, we will not let you down.