



## Sink Specifications

Color	SKU
Truffle	401926
White	401927
Anthracite	401920
Café	401922
Cinder	401923
Metallic Gray	401924
Coal Black	442924
Volcano Gray	443116
Soft White	443079

## Design and Planning Tips

- Min cabinet size: 27 in

What is included:

Sink clips  
Installation instructions  
Cut-out template  
Limited Lifetime Warranty

Depending on cabinet construction, a different cabinet size may be required. Consult the cabinet manufacturer.

4 additional knock-out holes

Cubed weight: 106 lbs.

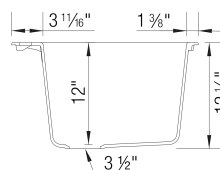
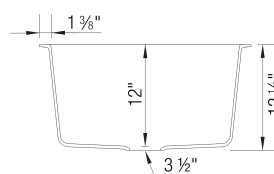
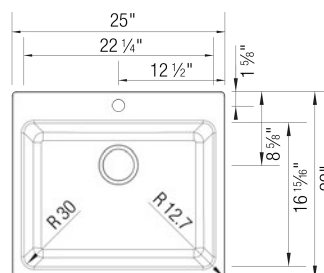
## Codes & Standards

CSA B45.8-18/ IAPMO Z403-2018

## Optional Accessories

Stainless Steel Laundry Rack 234771  
CapFlow Strainer Cover 517666

## LIVEN Laundry SILGRANIT



## Warranty

BLANCO offers a limited lifetime warranty on all sinks and faucets, as well as a one-year warranty on all custom accessories.

## Code/Standards Compliance

BLANCO sinks and faucets are third-party tested and certified to standards and listed by applicable certification bodies. For more information on individual product listings, contact our office or listing organization.



View our how-to videos to learn more about installing and caring for BLANCO products:  
<https://www.blanco.com/us-en/service/how-to-videos/how-to-videos-for-sinks/>

Questions? Contact us today



BLANCO America, Inc.  
110 Mount Holly By-Pass  
Lumberton, NJ 08048

Phone & Fax  
Phone: 888-668-6201  
Fax: 609-668-6211

While BLANCO endeavors to provide accurate information, all dimensions are nominal, cannot be guaranteed, and are subject to change or cancellation. BLANCO assumes no responsibility for use of superseded or voided specifications.