

# BOX MERCHANT PRE-DELIVERY GUIDE



## THANK YOU FOR YOUR PURCHASE

*This guide contains everything you need to know  
about the delivery and installation of your new QCA Spa!*



QCA SPAS • 1021 STATE STREET • BETTENDORF, IOWA 52722  
PHONE 888.729.7727 • FAX 800.568.4980 • [WWW.QCASPAS.COM](http://WWW.QCASPAS.COM)



# BOX MERCHANT PRE-DELIVERY GUIDE

## IMPORTANT INFORMATION

*Please make a record of the following information.  
It will be valuable if service is required.*

.....

Spa Model: \_\_\_\_\_

Spa Serial Number: \_\_\_\_\_

Date Purchased: \_\_\_\_\_ Date Installed: \_\_\_\_\_

.....

Spa Purchased From: \_\_\_\_\_

Spa Merchant Address: \_\_\_\_\_

Spa Merchant Phone Number: \_\_\_\_\_

Sales Person's Name: \_\_\_\_\_

.....

## IMPORTANT QCA SPAS CONTACT INFORMATION

**QCA Spa Service: 888-727-7727 ext. 7344, 7381, or 7385: M-F 8AM-5PM**

**QCA Spa Service E-mail Address: [support@qcaspas.com](mailto:support@qcaspas.com)**

**QCA Spa Service Fax Number: 563-359-3018**

.....

## Introduction

### **CONGRATULATIONS ON THE PURCHASE OF YOUR NEW QCA SPA!**

With some advanced preparation, delivery of your new spa will be a breeze. We've prepared this planning guide to provide you with the information necessary for you to be ready for your spa's delivery. We recommend reading this guide completely prior to the scheduled delivery of your QCA Spa. Proper preparation and care of your new QCA Spa will give your family years of relaxation and enjoyment.



## TABLE OF CONTENTS

| Section  | Page |
|--|------|
| 1. Things To Determine Before Spa Installation .....       | 4    |
| 2. Selecting The Best Location For Your Spa .....          | 6    |
| 3. Plan A Good Foundation For Your Spa .....               | 9    |
| 4. Plan The Delivery Of Your Spa.....                      | 11   |
| 5. Electrical Requirements Before Spa Delivery .....       | 14   |
| 6. G.F.C.I. Wiring Diagram.....                            | 16   |
| 7. Electrical Installation Of Spa After Spa Delivery ..... | 17   |
| 8. Wiring Placement Underneath Spa.....                    | 18   |
| 9. Wiring Schematic.....                                   | 19   |
| 10. Spa Model Specifications .....                         | 20   |

# BOX MERCHANT PRE-DELIVERY GUIDE

## *1. Things To Determine Before Spa Installation*

- Will my spa be located inside or outside?
- How much space do I have available for a spa?  
(Size of room, or patio)
- What are the measurements of door openings, fence gates for getting your spa to its destination?
- What are the dimensions of the spa (length, width, and depth) to determine if it will pass through interior doors or exterior gates?
- What is the weight of the spa without water and when filled. Will your patio or room floor support its considerable filled weight?
- Does your home have a dedicated 50 or 60 AMP G.F.C.I. breaker in the houses main breaker box or will one have to be added by an electrician?
- How far is it from your main breaker box to where your spa will be located?
- Is there a water source available nearby to fill and drain the spa with a garden hose?





## Commonly Asked Questions

- **DO I NEED A BUILDING PERMIT?**

Most cities and counties require permits for exterior construction and electrical circuits. Check with your local county ordinances to see if a building permit is required for spa installation.

- **DO I NEED A FENCE OR A GATE AROUND MY SPA?**

Some communities have codes requiring residential barriers such as fencing and/or self closing gates on the property to prevent unsupervised access to a spa by children under five years of age. Consult your local or county building codes to determine the need for a fence or gate.

- **DO I NEED A PLUMBER?**

No plumbing is required; your QCA Spa is entirely self-contained. Fill the spa using a garden hose; to empty, siphon with a garden hose or use a submersible pump.

- **DO I NEED AN ELECTRICIAN?**

Yes, you will need to hire an electrician to install the 240 volt 50 or 60 AMP neutrally protected G.F.C.I. (Ground Fault Circuit Interrupter) which are sold separately. Your main breaker box will also need to have a 50 or 60 AMP breaker. Your spa is hard wired through the floor, side or corner wall of the spa cabinet then directly into the spa's control pack. The G.F.C.I. is installed next to the spa on an exterior wall (*check with your local county ordinances for proper G.F.C.I. installation.*)

**(Exceptions:** Models 0, 0HSM, 1, 1P, 30, 31, 2S, 10, 14, and 14P come with a 15' G.F.C.I. protected cord and plug into any 120V /15 AMP wall outlet.)

## *2. Selecting The Best Location For Your Spa*

Indoors or outdoors, its up to you. But there are some things you will need to consider when determining your spa's placement.

### ***Outdoor Spa Placement***

Outdoor spa placement on a sound, level, unbroken concrete foundation is required. Do not place your spa on grass, patio blocks, pavers, or bare ground.

**NOTE: Damage caused by inadequate or improper foundation support is not covered by the manufacturer's warranty. A spa should rest completely flush with its foundation, therefore, do not endeavor to hand level your spa. The spa should not be shimmed in any way in an effort to level it. This may crack your spa shell or cause other internal damage. It is the responsibility of the spa owner to provide a proper foundation for the spa. Any attempt to manually level your spa WILL VOID THE WARRANTY!**

**DO NOT place your spa directly under or within 12 feet of overhead power, telephone or cable lines. Check with your local county ordinances.**

Make sure the spa is positioned so you have full access to the spa equipment compartments, in most cases, are located below the spa controls. Be sure to leave at least 30" around all sides and back panels for easy service access if needed.

## ***Weather***

If you live in a climate with a cold snowy winter and hot summer, you may want to place your spa close to an exterior door for easy spa access. A bathroom or changing room located close to your spa, can also be convenient. A warmer climate may require shade from the hot sun. Consider placement of your spa next to trees, shrubs, patio cover, under a gazebo or spa umbrella.

## ***Privacy***

Keep in mind your spa's surroundings (trees, shrubs, fences) during all seasons to determine your best privacy. Consider the view of your neighbors and plan your location accordingly.

## ***View***

Think about the direction you will be facing when sitting in your spa. Facing the exterior siding of your house would not be very enjoyable. Placing your spa where you will be facing a special landscaped area of your yard or a lovely evening sunset, this may enhance your spa experience.

## ***Keep Dirt and Debris Out of Your Spa***

Check the location of trees and spill paths from gutters to see if wind or rain will sweep debris into your spa. Prevent dirt and foliage from being tracked into your spa by providing a concrete path.

# BOX MERCHANT PRE-DELIVERY GUIDE

## ***Indoor Spa Placement***

For indoor spa placement, regular, code-compliant floors or level basement concrete are adequate to support the filled weight of your spa.

Indoor installation requires adequate ventilation. When the cover is off and the spa is in use, considerable amounts of humidity and moisture are put into the air. This moisture can damage, walls, ceilings, carpeting, draperies and furniture. You will need to install a ventilation exhaust fan either above the spa in the ceiling or in a side wall or window, next to and above the spa water. We also recommend a humidistat that will automatically turn on the exhaust fan when moisture is present.

Exhaust fans are rated by CFM's (cubic feet per minute). The fan must be powerful enough to remove all the air in the room in 3 minutes. To determine what size fan you will need, measure the rooms length x width x height and divide by 3 = CFM's. *Example: 20' x 10' x 8' = 1600 cubic ft. / 3 = 533 CFM's. You would need at least a 533 CFM fan for this room.*

We do not recommend placing your spa directly on household carpet or a wood floor. We recommend placing your spa on a ceramic tile or water resistant floor material. Extend this water resistant material at least 2 feet around the spa, in case of over splash and to catch water from bathers exiting the spa.



## 3. *Plan A Good Foundation For Your Spa*

Your spa needs a solid, level concrete foundation. The area that your spa sits on must be able to support the weight of the spa, the water in it, and those who use it. If the foundation is inadequate, it may shift or settle after the spa is in place, causing stress to the spa's shell.

**NOTE: Damage caused by inadequate or improper foundation support is not covered by the manufacturer's warranty. A spa should rest completely flush with its foundation, therefore, do not endeavor to hand level your spa. The spa should not be shimmed in any way in an effort to level it. This may crack your spa shell or cause other internal damage. It is the responsibility of the spa owner to provide a proper concrete foundation for the spa. Any attempt to manually level your spa WILL VOID THE WARRANTY!**

A spa filled with water is very heavy. Existing concrete patios must be inspected by a licensed contractor to determine adequate support. Your base must have a minimum of 150 pounds per sq. ft. load bearing capacity.

Place the spa on an elevated concrete foundation so that water drains away from it. Proper drainage will keep components protected from rain and wet weather.

# BOX MERCHANT PRE-DELIVERY GUIDE



## ***DO NOT PLACE YOUR SPA ON THE BARE GROUND!***

New concrete patios must be a 4" minimum depth with reinforced wire placed in the concrete.

## 4. Plan The Delivery Of Your Spa

### **Check the dimensions of your spa**

The Spa Specification chart on the back page lists your spa model and its dimensions. Compare the dimensions to the width of gates, sidewalks, and doorways along the delivery route used to bring the spa into your yard. It may be necessary for you to remove a gate or partially remove a fence in order to provide an unobstructed passageway to the installation location.

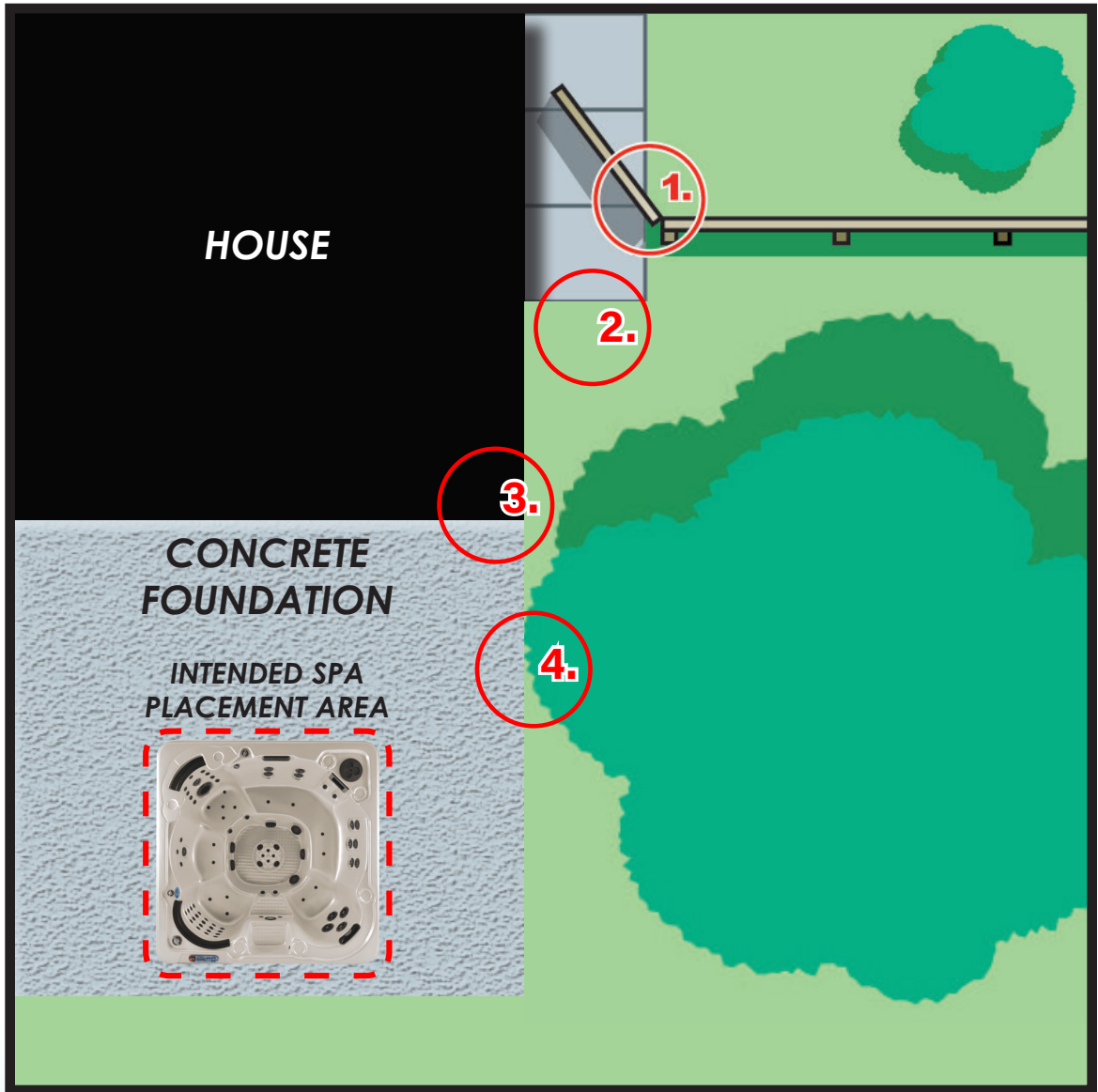
### **Curbside Delivery**

Your spa will be delivered by common carrier or freight truck to your home curbside. Your spa will be shipped within 21 business days and usually arrives within 10 business days after it ships. Independent delivery carrier will unload the spa from the truck and place it curbside next to a public street or highway. The driver **IS NOT** authorized to unwrap, set up, or do installation. The driver **WILL NOT** move your spa to the backyard or place it inside your home.





## Sample Spa Route Diagram





### ***Plan your spa route***

Create a diagram to plan your spa route. Consider the following when planning your own spa route in the sample illustration diagram (left):

Check the width of gates (#1), doors, steps (#2) and sidewalks to make sure your spa will pass through unobstructed. You may have to remove a gate or part of a fence to allow for adequate width clearance.

If the route will require a 90° turn, check the measurements at the turn to ensure the spa will fit. (#3)

Are there protruding gas meters, water meters or A/C units on your home which will be an obstruction along the path to your yard?

Are there low roof eaves, overhanging branches (#4) or rain gutters that could be an obstruction to overhead clearance?

Are there more than six (6) consecutive stairs without a landing in your route?



## 5. *Electrical Requirements Before Spa Delivery*

### **IMPORTANT PLEASE READ!**

**When installed in the United States or Canada, the electrical wiring of this spa must meet the requirements of the National Electric Code (NEC) and any applicable state, providence, or local codes. The electrical circuit must be installed by an electrical contractor or licensed electrician, and approved by a local building/electrical inspector.**

#### ***Electrical setup before delivery of your spa***

1. All 240 Volt spas must be permanently connected (hard wired) to the power supply. Supplying power to the spa which is not in accordance with these instructions will void both the independent testing agencies listing and the manufacturer's warranty.
2. The power supplied to the spa must be a dedicated circuit with no other appliances or lights sharing the power.
3. To determine the current, voltage and wire size required for the spa configuration to be connected:
  - Wire size must be appropriate per NEC and/or local codes. (Minimum #6 wire Required)
  - Wire size is determined by length of run from breaker box to spa and maximum current draw.
  - Minimum #6 copper wire with THHN insulation.
  - All wiring must be copper to ensure adequate connections. Do not use aluminum wire.

# BOX MERCHANT PRE-DELIVERY GUIDE



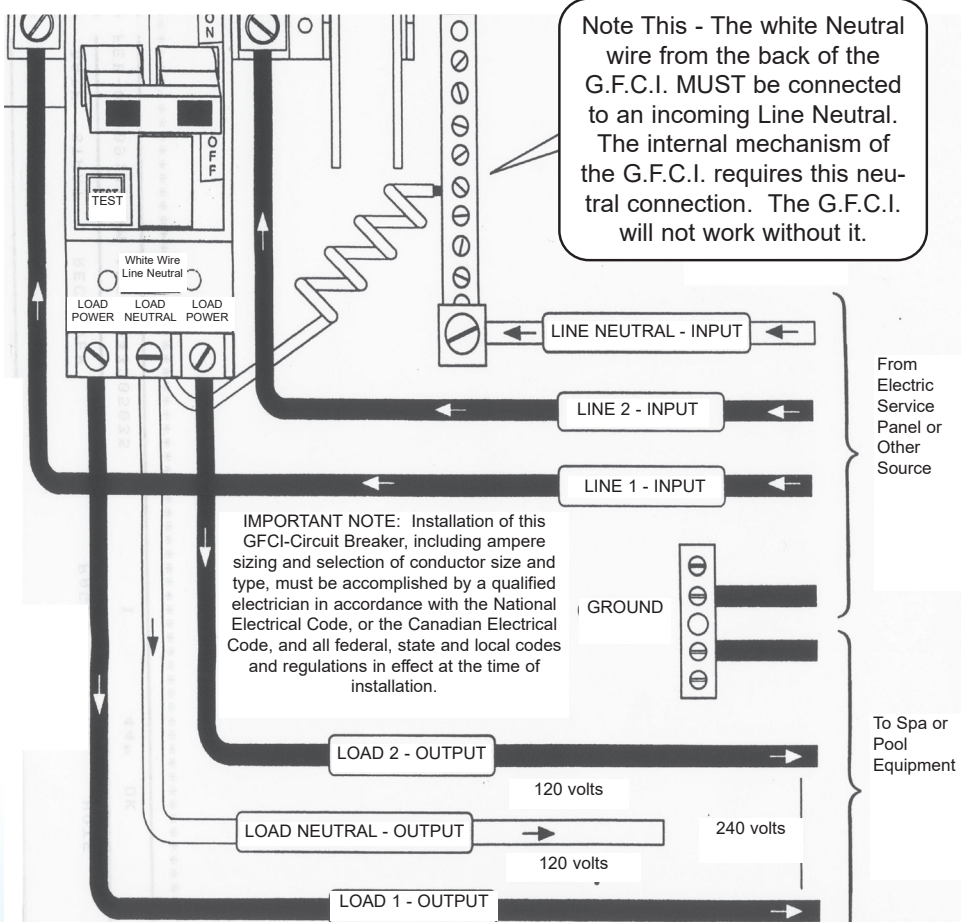
4. The electrical supply for the spa must include a suitable rated switch or circuit breaker to open all ungrounded supply conductors to comply with Section 422-20 of the National Electric Code, ANSI/NFPA 70. The disconnecting means must be readily accessible to the spa's occupant but installed within 10 feet from the spa water. Check with local municipalities for additional code requirements.
5. The electrical circuit for the spa must include a suitable ground fault circuit interrupter (GFCI) as required by NEC Article 680-42. Your spa requires a Neutrally Protected (GFCI) Ground Fault Circuit Interrupter, see the illustration on the following page for the proper wiring for your spa's GFCI.

# BOX MERCHANT PRE-DELIVERY GUIDE

## 6. GFCI Wiring Diagram

This diagram shows a "Three Wire Plus Ground" installation. It has a load Neutral connection, commonly required for spas containing both 120 and 240 volt equipment. They need the load neutral connection to produce the 120 volt power. The GFCI is usually 50 or 60 amps, depending on the amperage of your spa. A GFCI can be purchased at most Home Centers, Hardware Stores, or directly from QCA Spas. Refer to the table on page 20 to see what amperage your spa requires.

### Siemens GFCI Breaker Box



## BOX MERCHANT PRE-DELIVERY GUIDE

## 7. Electrical Installation Of Spa After Delivery

**(220/240 VOLT SPAS) IMPORTANT SAFETY NOTICE FOR ALL MODELS!**

Proper grounding is extremely important.

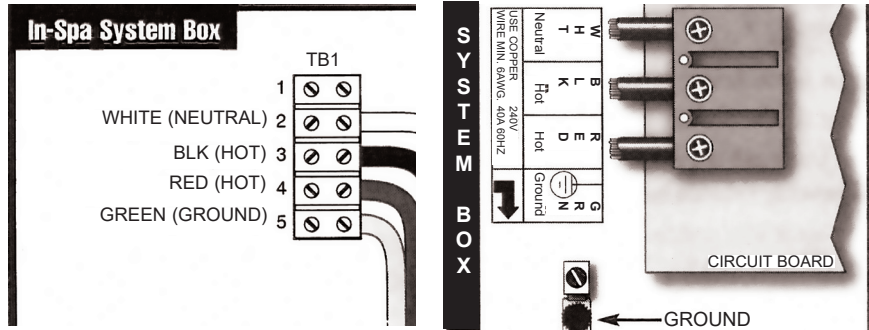
## For QCA Spas Control Packs

## VS 100

## VS 300

# VS 501

**IN.YJ**

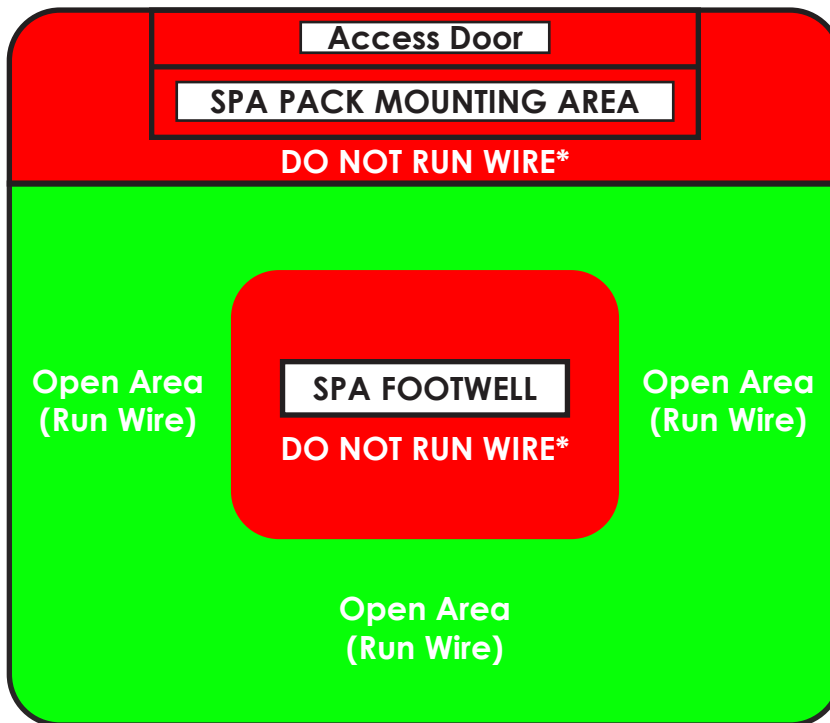


1. To gain access to the spa's control box, remove the cabinet access panel on the front of the spa, under the spas topside control. After removing the access panel, remove the two control box cover screws and cover.
2. Select the power wire inlet through the spa cabinet you want to use. (Either drill a hole through the cabinet or run wire in conduit through the base of the spa.) Then feed the power cable through it to the left side of the control box.
3. Run power wire through the circular hole on the left side of the control box.
4. Connect wires, color to color, into the terminal openings and tighten securely. Connect ground wire to the ground terminal and tighten securely.
5. Secure the control box door by installing its screws, then re-install the cabinet access panel under the topside control. Electrical installation is now complete.



# BOX MERCHANT PRE-DELIVERY GUIDE

## 8. Wiring Placement Underneath Spa

THROUGH BASE OF SPA  
FRONT OF SPA



THIS VIEW IS THE BOTTOM SIDE OF THE SPA

-  Do Not Run Wire Up Through Bottom of Spa
-  Open Area Acceptable to Run Wire Through Bottom of Spa

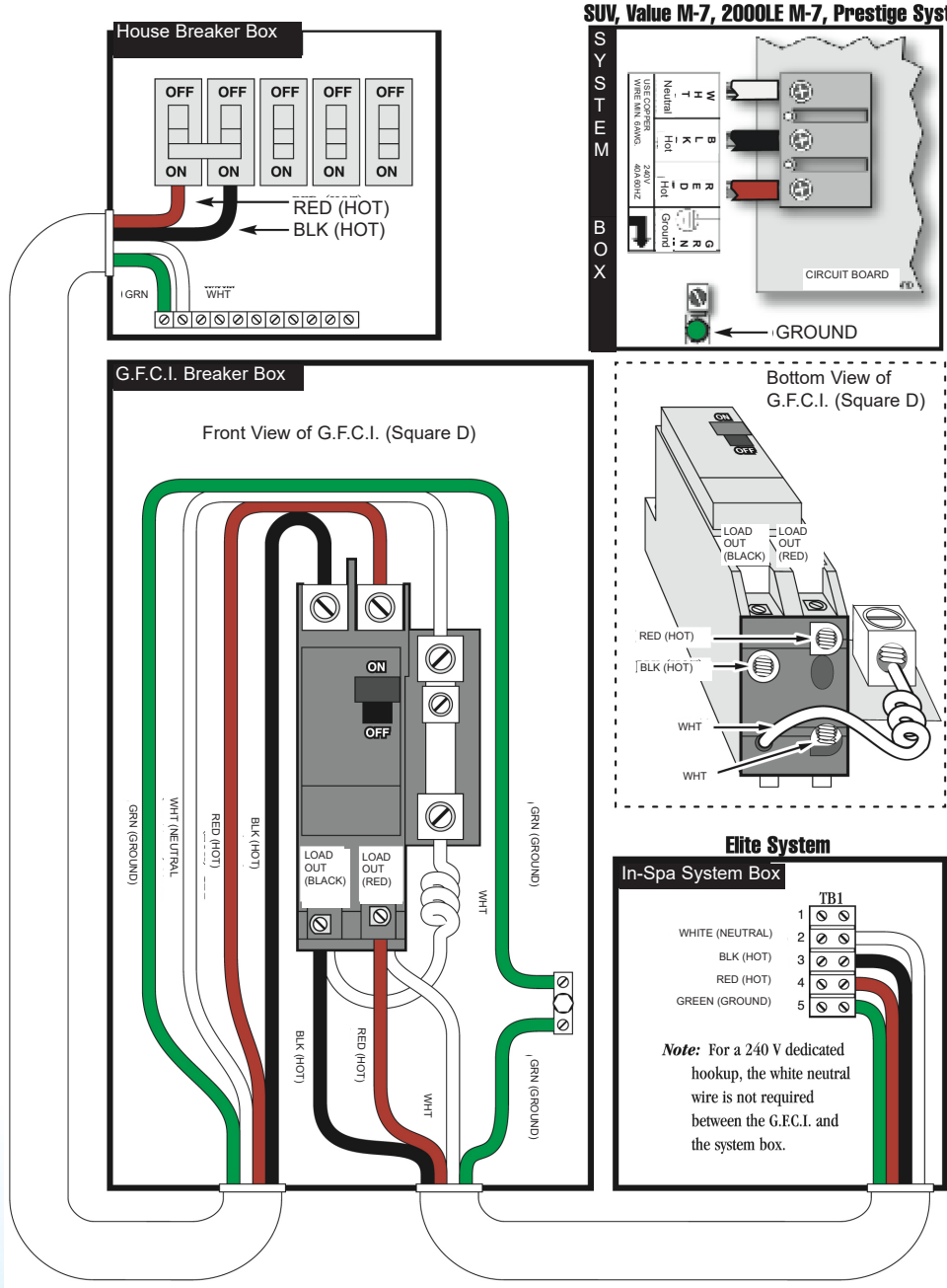
**\* Do Not Put Wires Through Footwell or Spa Pack Area**



# BOX MERCHANT PRE-DELIVERY GUIDE

## 9. Wiring Schematic

VS 100/300/501/IN.YJ



# BOX MERCHANT PRE-DELIVERY GUIDE

## 10. Spa Model Specifications

| Model Number | Outside Dimensions (LxWxD) | Gallons | Dry Weight | Filled Weight | Power in Volts/Amps |
|--------------|----------------------------|---------|------------|---------------|---------------------|
| 37P & 14P    | 80"x74"x30"                | 300     | 328        | 2974          | 120V/15Amp          |
| 33           | 78"x60"x34"                | 230     | 420        | 2338          | 120V/15Amp          |
| 34           | 78"x60"x34"                | 260     | 485        | 2653          | 120V/15Amp          |
| 35           | 78"x78"x36"                | 360     | 560        | 3562          | 240V/50Amp          |
| 36           | 78"x78"x38"                | 385     | 580        | 3791          | 240V/50Amp          |
| 38           | 72"x84"x36"                | 277     | 750        | 5000          | 240V/50Amp          |
| 0            | 91"x42"x29"                | 190     | 214        | 1799          | 120V/15Amp          |
| 0HSM         | 91"x42"x29"                | 190     | 214        | 1799          | 120V/15Amp          |
| 1            | 81"x57"x30"                | 240     | 309        | 2310          | 120V/15Amp          |
| 2L           | 82"x79"x36"                | 400     | 563        | 3899          | 240V/50Amp          |
| 10           | 88"x60"x30"                | 275     | 300        | 2594          | 240V/50Amp          |
| 14           | 80"x74"x30"                | 300     | 328        | 2974          | 120V/15Amp          |
| 3            | 82"x82"x36"                | 475     | 533        | 4552          | 240V/50Amp          |
| 4L           | 82"x82"x36"                | 425     | 586        | 4108          | 240V/50Amp          |
| 5 & 5A       | 82"x82"x36"                | 475     | 589/595    | 4552          | 240V/50Amp          |



Thank you for choosing QCA Spas

