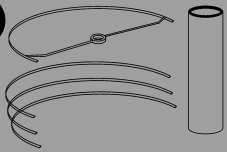
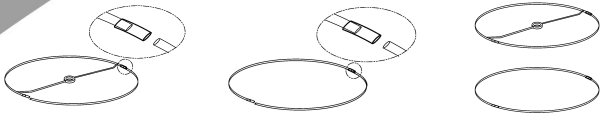


STEPS TO ASSEMBLE THE LAMPSHADE

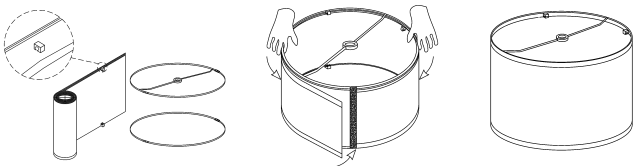
1 Take out the lampshades and half-round iron frames.



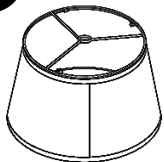
2 Join the shorter half-round frame to another half-round frame which have center ring, then join the longer half-round frame to another half-round frame.



3 Align the frame with the edge of the lampshades and secure it in place using fasteners. Repeat the process for the second frame. Ensure that the frames are firmly attached and the lampshades are tightly stretched.



4 For an oblique barrel-shaped lampshade, align the lamp frame by placing its short edge on the corresponding short side of the lampshade and the long edge on the corresponding long side.

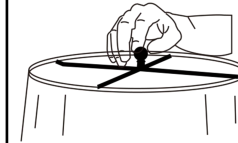


F191 INSTRUCTION MANUAL

5 Install the harps onto the lamp base by positioning them over the sockets. Next, insert the bulb into the socket and rotate it clockwise until it is securely in place. (bulbs are not included).



6 Once the lampshade is positioned correctly, screw the finial into place to hold it securely. (If the lamp shade is slanted, adjust the base of the finial to make it level).



4 MODERN 4 HOME

